

Stony Brook Faculty

ANTHROPOLOGY

ANT

Department of Anthropology

Chairperson: William Arens

Director of Undergraduate Studies: Curtis Marean

Faculty

William Arens, *Professor, Ph.D., University of Virginia*: Africa; social anthropology.

David Bernstein, *Associate Professor and Director of the Institute for Long Island Archaeology, Ph.D., State University of New York at Binghamton*: North American archaeology.

Diane Doran, *Assistant Professor, Ph.D., State University of New York at Stony Brook*: Behavior and ecology of African apes; primatology.

David Gilmore, *Professor, Ph.D., University of Pennsylvania*: Mediterranean area; social anthropology.

Frederick Grine, *Associate Professor, Ph.D., University of Witwatersrand*: Physical anthropology; human evolution.

Margaret Gwynne, *Adjunct Associate Professor, Ph.D., State University of New York at Stony Brook*: Caribbean area; women in development.

David Hicks, *Professor, Ph.D., University of London; D. Phil., University of Oxford*: Indonesia; social anthropology.

Theodore R. Kennedy, *Associate Professor, Ph.D., Princeton University*: North America; Caribbean area; social anthropology.

Aisha Khan, *Assistant Professor, Ph.D., City University of New York*: Joint appointment with Africana Studies; Caribbean; Post-Colonial Societies; Diaspora Studies.

Curtis Marean, *Associate Professor, Ph.D., University of California, Berkeley*: African pre-history; archaeozoology.

Lawrence Martin, *Professor, Ph.D., University of London*: Ape and human evolution; dental anthropology.

Dolores Newton, *Associate Professor, Ph.D., Harvard University*: South America; cultural anthropology; material culture.

Gregory Ruf, *Assistant Professor, Ph.D., Columbia University*: Joint appointment with Social Sciences Interdisciplinary Studies; Social organization and gender; theory and methodology; rural industrialization; East Asia, China, Overseas Chinese, Japan.

John J. Shea, *Assistant Professor, Ph.D., Harvard University*: Lithic technology; Old World paleolithic; archaeology of northeastern North America.

Elizabeth C. Stone, *Professor, Ph.D., University of Chicago*: Near East; Old World archaeology.

Patricia Wright, *Professor and Director of the Institute for the Conservation of Tropical Environments, Ph.D., City University of New*

York: Primate ecology; primate behavior; primate conservation; Madagascar.

Adjunct Faculty

Estimated number: 2

Teaching Assistants

Estimated number: 4

Anthropology is a social science that seeks to understand and explain human

cultural, behavioral, and biological variation through time and space. This gives anthropology a wide reach and has resulted in the formation of three subdisciplines: social anthropology, archaeology, and physical anthropology. Social anthropology concentrates on modern human culture and behavior. Archaeology examines cultural and behavioral variation over time. Physical anthropology studies the biological evidence for human evolution, encompassing everything from the study of modern non-human primates to the earliest stages of mammalian fossil evolution. The objective of the anthropology major is to train the student in all three subdisciplines while allowing the student to concentrate on any specific subdiscipline.

Students with a major in anthropology take several post-graduate paths. Some continue their anthropology training in graduate schools, many at the finest graduate schools in the country. Others pursue, for example, medical school or conservation studies.

The undergraduate program introduces the student to the general field of anthropology, its branches, its theories and methods, and its relation to the other social sciences, the humanities, and the natural sciences. The curriculum emphasizes the fields of cultural and social anthropology, archaeology, and physical anthropology, and includes offerings in medical anthropology. Students often have the opportunity to pursue coursework in any of the three fields in different cultural settings. Please see the Director of Undergraduate Studies for details.

Department of Art

Chairperson: James H. Rubin

Director of Undergraduate Studies: Jacques Guilmain



ART

Faculty

Ilan Averbuch, *Lecturer, M.F.A., Hunter College*: Sculpture.

James Beatman, *Adjunct Lecturer, M.F.A., University of Massachusetts-Amherst*: Sculpture.

Michele H. Bogart, *Associate Professor, Ph.D., University of Chicago*: Art and architectural history; American and 20th-century art.

Toby Buonagurio, *Professor, M.A., City College of New York*: Ceramics; ceramic sculpture; drawing; painting.

Rhonda Cooper, *Adjunct Lecturer, M.A., University of Hawaii*: Oriental art; museum and gallery administration.

Michael Edelson, *Associate Professor, B.A., State University of New York Empire State College*: Photography; photographic criticism; film and television theory and criticism.

Barbara Frank, *Assistant Professor, Ph.D., Indiana University*: African art history.

Ann Gibson, *Associate Professor, Ph.D., University of Delaware*: 20th-century art history.

Jacques Guilmain, *Professor, Ph.D., Columbia University*: Art and architectural history; medieval art.

Helen Harrison, *Adjunct Lecturer and Director, Pollock-Krasner House and Study Center, M.A., Case Western Reserve University*: American art.

Deborah Johnson, *Adjunct Lecturer, M.A., University of Minnesota-Minneapolis*: History of American art.

Donald B. Kuspit, *Professor, Ph.D., University of Michigan; D.Phil., University of Frankfurt*: Art criticism; 20th-century and northern Renaissance art.

Stephen Larese, *Adjunct Lecturer, M.F.A., University of Cincinnati*: Painting and drawing.

Martin Levine, *Visiting Assistant Professor, M.F.A., California College of Arts and Crafts*: Printmaking.

Nina A. Mallory, *Professor Emeritus, Ph.D., Columbia University*: Art and architectural history; Renaissance, baroque, and 18th-century art.

Daniel Monk, *Assistant Professor, Ph.D., Princeton University*: Architectural history and criticism.

Anita F. Moskowitz, *Professor, Ph.D., New York University*: Art and architectural history; medieval and Renaissance art.

Stephen Nash, *Adjunct Associate Professor, M.A., Royal College of Art, London*: Anatomical and biological illustration.

D. Terence Netter, *Adjunct Associate Professor, M.F.A., George Washington University*: Drawing; painting; art and philosophy.

Melvin H. Pekarsky, *Professor, M.A., Northwestern University*: Drawing; painting; public art.

Howardena Pindell, *Professor, M.F.A., Yale University*: Drawing; painting.

James H. Rubin, *Professor, Ph.D., Harvard University*: Art and architectural history; 18th- and 19th-century European art and criticism.

Thomas Thompson, *Adjunct Lecturer, M.F.A., Ohio University*: Photography and printmaking.

Adjunct Faculty

Estimated number: 2

Teaching Assistants

Estimated number: 20



genetic regulation of mouse gastrulation; genome organization.

Nancy Hollingsworth, *Assistant Professor, Ph.D., University of Washington, Seattle:*

Analysis of meiotic chromosome recombination, synapsis, and segregation in yeast.

Abraham D. Krikorian, *Professor, Ph.D., Cornell University:* Plant growth and development.

William J. Lennarz, *Professor, Ph.D., University of Illinois:* The role of glycoproteins in cellular and developmental biology.

Erwin London, *Associate Professor, Ph.D., Cornell University:* Membrane biochemistry and biophysics.

Harvard Lyman, *Associate Professor, Ph.D., Brandeis University:* Photoregulation of chloroplast development and replication. Recipient of the State University Chancellor's Award for Excellence in Teaching, 1991, and the President's Award for Excellence in Teaching, 1991.

Kenneth B. Marcu, *Professor, Ph.D., State University of New York at Stony Brook:* Organization, mechanisms of expression, and evolution of eukaryotic multigene systems.

Raghupathy Sarma, *Associate Professor, Ph.D., Madras University:* X-ray crystal structure analysis of molecules of biological interest.

Nisson Schechter, *Professor, Ph.D., Western Michigan University:* Molecular basis of nerve growth and regeneration.

Jakob Schmidt, *Professor, Ph.D., University of California, Riverside; M.D., University of Munich:* Neurochemistry.

Richard B. Setlow, *Adjunct Professor, Ph.D., Yale University:* DNA repair; biological effects of ultraviolet and ionizing radiation.

Sanford R. Simon, *Professor, Ph.D., Rockefeller University:* Structure-function relationships in hemoglobin; membrane biochemistry.

Rolf Sternglanz, *Professor, Ph.D., Harvard University:* DNA replication.

F. William Studier, *Adjunct Professor, Ph.D., California Institute of Technology:* Genetics and physiology of bacterial viruses.

William E. Theurkauf, *Assistant Professor, Ph.D., Brandeis University:* Microtubules and microfilaments in early development.

Gerald H. Thomsen, *Assistant Professor, Ph.D., Rockefeller University:* Vertebrate molecular embryology; cell-cell signaling and group factor function.

James S. Trimmer, *Associate Professor, Ph.D., University of California, San Diego:* Molecular neurobiology; structure, function, and regulation of voltage-sensitive ion channels.

Department of Ecology and Evolution

Chairperson: James D. Thomson

Director of Undergraduate Studies: George J. Hechtel

Faculty

Edwin H. Battley, *Associate Professor, Ph.D., Stanford University:* Thermodynamics of microbial growth; ecological energetics; microbial ecology; nitrification and denitrification in aquatic systems.

Michael A. Bell, *Associate Professor, Ph.D., University of California, Los Angeles:* Evolutionary biology; ichthyology; paleobiology and geographic variation.

Daniel E. Dykhuizen, *Professor, Ph.D., University of Chicago:* Population genetics and molecular evolution, especially of bacteria.

47

Program in Astronomy/Planetary Sciences

Associate Chair for Astronomy/Planetary Sciences: James M. Lattimer
Director of Undergraduate Studies: Michael Simon

Faculty

Kenneth M. Lanzetta, *Assistant Professor, Ph.D., University of Pittsburgh:* Astronomy.

James M. Lattimer, *Professor, Ph.D., University of Texas at Austin:* Astronomy.

Deane M. Peterson, *Associate Professor, Ph.D., Harvard University:* Astronomy.

Michal Simon, *Professor, Ph.D., Cornell University:* Astronomy.

Philip M. Solomon, *Professor, Ph.D., University of Wisconsin:* Astronomy.

Frederick M. Walter, *Associate Professor, Ph.D., University of California, Berkeley:* Astronomy.

Amos Yahil, *Professor, Ph.D., California Institute of Technology:* Astronomy.

Teaching Assistants

Estimated number: 5

Astronomy is the scientific discipline dedicated to the study of everything in the universe outside the Earth's atmosphere. The undergraduate major leading to the Bachelor of Science degree in astronomy/planetary sciences (AST) prepares a student for graduate and professional work. Our graduates teach in secondary schools, work in academic, government, and industrial laboratories, and teach and conduct research at colleges and universities.

Course requirements for the B.S. program are listed below and are summarized in the accompanying chart. Upon declaring the AST major, the Director of Undergraduate Studies will assign a faculty advisor to the student. This advisor will assist the student in the selection of courses. Students should consult frequently with their faculty advisors regarding their progress and regarding appropriate science courses. Because the position of the scientist in society is responsible and complex, the student is cautioned to pay careful attention to general education in the arts, humanities, and social sciences.

Departments of Biochemistry and Cell Biology Ecology and Evolution Neurobiology and Behavior

Department of Biochemistry and Cell Biology

Chairperson: William J. Lennarz

Director of Undergraduate Studies: Raghupathy Sarma

Faculty

Paul M. Bingham, *Associate Professor, Ph.D., Harvard University:* Regulation of transcription in and transposon biology of developing multicellular organisms.

Deborah Brown, *Assistant Professor, Ph.D., Stanford University:* Trafficking of membrane proteins in polarized epithelial cells.

David Bynum, *Adjunct Associate Professor, Ph.D., Dartmouth College:* Cell motility. Recipient of the State University Chancellor's Award for Excellence in Teaching, 1988, and the President's Award for Excellence in Teaching, 1988.

Elof Axel Carlson, *Distinguished Teaching Professor, Ph.D., Indiana University:* Mutation and gene structure; history of genetics; human genetics.

Vitaly Citovsky, *Assistant Professor, Ph.D., Hebrew University:* Nuclear targeting and intercellular communication in plants.

Neta Dean, *Assistant Professor, Ph.D., University of California, Los Angeles:* Molecular genetics and protein sorting in yeast.

Dale G. Deutsch, *Associate Professor, Ph.D., Purdue University:* Molecular biology of marijuana action.

Bernard S. Dudock, *Professor, Ph.D., Pennsylvania State University:* Structure and function of cellular and viral tRNA. Recipient of the State University Chancellor's Award for Excellence in Teaching, 1974.

Martin Freundlich, *Professor, Ph.D., University of Minnesota:* Regulation of gene expression.

J. Peter Gergen, *Associate Professor, Ph.D., Brandeis University:* Molecular biology; genetics of embryonic development in *Drosophila*.

Robert Haltiwanger, *Assistant Professor, Ph.D., Duke University:* Glycosylation of nuclear and cytoplasmic proteins.

Bernadette Holdner, *Assistant Professor, Ph.D., University of Illinois-Chicago:* Development and

Walter F. Eanes, *Professor, Ph.D., State University of New York at Stony Brook*: Population and biochemical genetics of *Drosophila*; molecular evolution.

Douglas J. Futuyma, *Professor, Ph.D., University of Michigan*: Ecological genetics; coevolution of species, especially of plants and insects; evolutionary biology. Recipient of the State University Chancellor's Award for Excellence in Teaching, 1974.

Lev R. Ginzburg, *Professor, Ph.D., Agrophysical Institute, St. Petersburg, Russia*: Theoretical and applied ecology.

Jessica Gurevitch, *Associate Professor, Ph.D., University of Arizona*: Evolutionary ecology of plant populations and communities; plant physiological ecology.

George J. Hechtel, *Associate Professor, Ph.D., Yale University*: Systematics and zoogeography of marine demospongiae. Recipient of the State University Chancellor's Award for Excellence in Teaching, 1982.

Charles H. Janson, *Associate Professor, Ph.D., University of Washington*: Social ecology of ver-



tebrates; plant dispersal strategies.

Manuel T. Lerdau, *Assistant Professor, Ph.D., Stanford University*: Plant ecology and physiology; global change.

Jeffrey S. Levinton, *Professor, Ph.D., Yale University*: Marine benthic ecology; population genetics of bivalve mollusks; paleoecology.

Axel Meyer, *Associate Professor, Ph.D., University of California, Berkeley*: Ecology, evolution and behavior of cichlid fishes; phylogeny reconstruction via molecular techniques.

Rollin C. Richmond, *Professor and Provost and Executive Vice President for Academic Affairs, Ph.D., Rockefeller University*: Molecular evolutionary genetics.

F. James Rohlf, *Professor, Ph.D., University of Kansas*: Multivariate data analysis techniques applied to problems in taxonomy and ecology; computer modeling; applied ecology.

Lawrence B. Slobodkin, *Professor, Ph.D., Yale University*: Evolutionary strategy and constraints; Hydra; ecotoxicology.

James D. Thomson, *Professor, Ph.D., University*

of Wisconsin: Pollination biology; plant reproductive systems; community ecology.

Gregory A. Wray, *Assistant Professor, Ph.D., Duke University*: Evolution of developmental mechanisms; evolution and paleobiology of echinoderm larvae; origin and radiation of echinoderm body plans.

Department of Neurobiology and Behavior

Chairperson: Lorne M. Mendell

Director of Undergraduate Studies: George J. Hechtel

Faculty

Paul R. Adams, *Professor, Ph.D., London University*: Cellular neurobiology; synaptic transmission.

Paul Brehm, *Professor, Ph.D., University of California, Los Angeles*: Cellular neurobiology; synaptic transmission.

John B. Cabot, *Professor, Ph.D., University of Virginia*: Autonomic system.

Albert D. Carlson, *Professor, Ph.D., University of Iowa*: Higher brain function; comparative neurobiology. Recipient of the State University Chancellor's Award for Excellence in Teaching, 1983.

William F. Collins III, *Associate Professor, Ph.D., University of Pennsylvania*: Physiology; neurophysiology. Recipient of the State University Chancellor's Award for Excellence in Teaching, 1997.

L. Craig Evinger, *Professor, Ph.D., University of Washington*: Sensorimotor integration.

Joseph Fetcho, *Associate Professor, Ph.D., University of Michigan*: Motor systems.

James W. Gnatd, *Assistant Professor, Ph.D., University of Alabama*: Systems neurophysiology; sensorimotor integration.

Simon Halegoua, *Professor, Ph.D., State University of New York at Stony Brook*: Molecular neurobiology.

Maurice Kernan, *Assistant Professor, Ph.D., University of Wisconsin-Madison*: Molecular neurobiology.

Mary Kritzer, *Assistant Professor, Ph.D., Yale University*: Neurobiology of cognition.

Joel M. Levine, *Associate Professor, Ph.D., Washington University*: Developmental neurobiology.

Gail Mandel, *Professor, Ph.D., University of California, Los Angeles*: Molecular neurobiology.

Gary G. Matthews, *Professor, Ph.D., University of Pennsylvania*: Cellular neurobiology; synaptic transmission.

David McKinnon, *Associate Professor, Ph.D., Australian National University*: Molecular biology of ion channels.

Susan McLaughlin, *Assistant Professor, Ph.D., University of Florida*: Molecular neurobiology.

Lorne M. Mendell, *Distinguished Professor, Ph.D., Massachusetts Institute of Technology*: Sensorimotor integration.

S. M. Sherman, *Professor, Ph.D., University of Pennsylvania*: Functional organization and plasticity of mammalian visual systems.

Benjamin Walcott, *Associate Professor, Ph.D., University of Oregon*: Physiology.

Stephen Yazulla, *Professor, Ph.D., University of Delaware*: Physiology.

Affiliated Faculty

Marian Evinger, *Pediatrics*

Edmund LaGamma, *Pediatrics*

Stuart S. McLaughlin, *Physiology and Biophysics*

Department of Chemistry

Chairperson: Iwao Ojima

Director of Undergraduate Studies: Joseph W. Lauher

Faculty

Mohammad J. Akhtar, *Lecturer and Coordinator of General Chemistry Laboratories, Ph.D., University of the Pacific*: Kinetics and mechanisms of inorganic reactions.

John M. Alexander, *Professor, Ph.D., Massachusetts Institute of Technology*: Reactions between complex nuclei.

Benjamin Chu, *Distinguished Professor, Ph.D., Cornell University*: Light-scattering spectroscopy; X-ray scattering; polymer physics; colloid science, DNA electrophoresis.

Frank W. Fowler, *Professor, Ph.D., University of Colorado*: Synthetic chemistry.

Theodore D. Goldfarb, *Professor, Ph.D., University of California, Berkeley*: Environmental chemistry; ethics in science.

Recipient of the State University Chancellor's Award for Excellence in Teaching, 1979.

Clare Grey, *Assistant Professor, D.Phil., University of Oxford*: Materials chemistry; solid-state NMR spectroscopy; catalysis.

Albert Haim, *Professor, Ph.D., University of Southern California*: Kinetics and mechanisms of inorganic reactions. Recipient of the State University Chancellor's Award for Excellence in Teaching, 1981. Recipient of the Stony Brook Alumni Association's Outstanding Professor Award, 1994.

David M. Hanson, *Professor, Ph.D., California Institute of Technology*: Soft X-ray spectroscopy; photochemistry; radiation chemistry.

Takanobu Ishida, *Professor, Ph.D., Massachusetts Institute of Technology*: Chemistry of stable isotopes; isotope separation; electrochemistry.

Philip M. Johnson, *Professor, Ph.D., Cornell University*: Optical molecular spectroscopy.

Marjorie Kandel, *Lecturer and Coordinator of Organic Chemistry Laboratories, M.S., Indiana University*: Organic chemistry; laboratory curriculum development. Recipient of the State University Chancellor's Award for Excellence in Teaching, 1996, and the President's Award for Excellence in Teaching, 1996.

Robert C. Kerber, *Professor, Ph.D., Purdue University*: Organo-transition metal chemistry. Recipient of the State University Chancellor's Award for Excellence in Teaching, 1986, and the President's Award for Excellence in Teaching, 1986.



Alexei Khokhlov, *Adjunct Professor, Ph.D., Moscow State University*: Physical chemistry of polyelectrolytes and ionomers; polymer physics.

Stephen A. Koch, *Professor, Ph.D., Massachusetts Institute of Technology*: Inorganic, bioinorganic, and solid-state chemistry.

Chirakkal V. Krishnan, *Visiting Professor, part time, Ph.D., University of Bombay*: Chemistry education.

Roy Lacey, *Associate Professor, Ph.D., State University of New York at Stony Brook*: Nuclear chemistry.

Joseph W. Lauher, *Professor, Ph.D., Northwestern University*: Structural chemistry; crystallography. Recipient of the State University Chancellor's Award for Excellence in Teaching, 1990, and the President's Award for Excellence in Teaching, 1990.

William J. le Noble, *Professor, Ph.D., University of Chicago*: Chemistry of highly compressed solutions; stereochemistry.

Andreas Mayr, *Professor, Ph.D., University of Munich*: Synthesis, reactivity, and physical properties of transition metal compounds; metal-carbon multiple bonds; molecular materials.

Michelle M. Millar, *Associate Professor, Ph.D., Massachusetts Institute of Technology*: Transition metal chemistry; bioinorganic chemistry.

Marshall D. Newton, *Adjunct Professor, Ph.D., Harvard University*: Theoretical chemistry; prediction and analysis of molecular structure and energetics.

Iwao Ojima, *Distinguished Professor, Ph.D., University of Tokyo*: Synthetic, organometallic, and medicinal chemistry.

Richard N. Porter, *Professor, Ph.D., University of Illinois at Urbana-Champaign*: Theoretical chemistry; quantum dynamics.

Daniel P. Raleigh, *Assistant Professor, Ph.D., Massachusetts Institute of Technology*: Biological chemistry; protein structure and protein-ligand interactions using NMR.

Nicole S. Sampson, *Assistant Professor, Ph.D., University of California, Berkeley*: Bioorganic chemistry; mechanistic enzymology and molecular recognition; substrate analogs; protein-protein interactions.

Robert F. Schneider, *Associate Professor, Ph.D., Columbia University*: Nuclear quadrupole resonance.

Stanley Seltzer, *Adjunct Professor, Ph.D., Harvard University*: Elucidation of enzyme and organic reaction mechanisms.

Scott McN. Sieburth, *Associate Professor, Ph.D., Harvard University*: Synthetic and bioorganic chemistry.

Richard Solo, *Adjunct Associate Professor, Ph.D., University of California, Berkeley*: Gas phase kinetics.

Charles S. Springer, *Professor Emeritus, Ph.D., Ohio State University*: Nuclear magnetic resonance, with emphasis on living systems.

George Stell, *Professor, Ph.D., New York University*: Molecular theory of fluids; transport and thermodynamic properties of fluids.

Hans Thomann, *Adjunct Assistant Professor, Ph.D., State University of New York at Stony Brook*: Magnetic resonance in disordered condensed matter.

Peter Tonge, *Assistant Professor, Ph.D., University of Birmingham, England*: Biological chemistry and enzyme mechanisms; quantitating substrate strain in enzyme-substrate complexes using vibrational spectroscopy; rational drug design.

Arnold Wishnia, *Associate Professor, Ph.D., New York University*: Physical chemistry of proteins.

Affiliated Faculty

Patrick J. Herley, *Materials Science and Engineering*

Francis Johnson, *Pharmacological Sciences*

Franco P. Jona, *Materials Science and Engineering*

Erwin London, *Biochemistry*

John B. Parise, *Earth and Space Sciences*



Department of Comparative Studies

Chairperson: Krin Gabbard

Director of Undergraduate Studies: Peter Manchester

Faculty

Thomas J.J. Altizer, *Professor Emeritus, Ph.D., University of Chicago*: Religion and literature; theology.

Ruth S. Bottigheimer, *Adjunct Associate Professor, D.A., State University of New York at Stony Brook*: German literature; fairy tales.

William Chittick, *Professor, Ph.D., Teheran University*: Islamic studies; comparative mysticism.

Sungtaek Cho, *Assistant Professor, Ph.D., University of California, Berkeley*: Buddhist literature and history in east and south Asia.

Krin Gabbard, *Professor, Ph.D., Indiana University*: The arts and their interrelations; film; drama.

Aaron W. Godfrey, *Lecturer, M.A., Hunter College*: Latin; medieval studies.

Robert Goldenberg, *Associate Professor, Ph.D., Brown University*: Jewish thought; history of Judaism; Talmudic literature.

Beverly Haviland, *Associate Professor, Ph.D., Princeton University*: 19th- and 20th-century English, American, and French literature; literary theory and psychoanalysis.

Robert Hoberman, *Associate Professor, Ph.D., University of Chicago*: Linguistic theory; Hebrew; Arabic; Aramaic.

Carole Kessner, *Assistant Professor, part time, Ph.D., State University of New York at Stony Brook*: Modern Jewish literature and culture; multicultural literature; Bible as literature.

Peter B. Manchester, *Associate Professor, Ph.D., Graduate Theological Union*: Christian origins; philosophical theology.

Sachiko Murata, *Associate Professor, Ph.D., Teheran University*: Islam; Japanese religions.

Sung-Bae Park, *Professor, Ph.D., University of California, Berkeley*: Buddhist studies; Indian, Chinese, Japanese, and Korean religious thought.

Sandy Petrey, *Professor, Ph.D., Yale University*: 19th-century French literature.

Ilona Rashkow, *Associate Professor, Ph.D., University of Maryland at College Park*: Literature and politics; Hebrew Bible and literary theory.

Mark Setton, *Assistant Professor, Ph.D., University of Oxford*: East Asian intellectual history; Korean Confucianism.

Michael Sprinker, *Professor, Ph.D., Princeton University*: Literary criticism; 19th- and 20th-century British and American literature.

Louise O. Vasvari, *Professor, Ph.D., University of California, Berkeley*: Medieval Spanish literature; Romance philology; linguistics; translation theory. Recipient of the State University Chancellor's Award for Excellence in Teaching, 1976.

Ban Wang, *Assistant Professor, Ph.D., University of California, Los Angeles*: Chinese and English literature; cultural studies; literary theory; aesthetics.

Affiliated Faculty

Russell E. Brown, *German*

Román de la Campa, *Spanish*

Thomas A. Kerth, *German*

Thomas Kranidas, *English*

Mary C. Rawlinson, *Philosophy*

Nicholas Rzhnevsky, *Slavic Languages*

Hugh J. Silverman, *Philosophy*

Éléonore Zimmermann, *French*

Adjunct Faculty

Estimated number: 3

Teaching Assistants

Estimated number: 10

The Department of Comparative Studies integrates the efforts of a number of humanities programs centering on comparative studies in literature, language, and culture. In addition to the major in comparative studies in literature, described below, the department offers major programs in humanities and religious studies and minor programs in classical civilization, Japanese studies, Judaic studies, Korean studies, and religious studies. Requirements for these programs appear under each program title elsewhere in the alphabetical listings of Arts and Sciences programs. Further information is available in the Comparative Studies Office.



Department of Economics

Chairperson: Warren Sanderson

Director of Undergraduate Studies: William Dawes

Faculty

Reiko Aoki, *Assistant Professor, Ph.D., Stanford University*: Industrial organization; game theory.

Robert J. Aumann, *Professor, Ph.D., Massachusetts Institute of Technology*: Game theory; mathematical economics.

William Dawes, *Lecturer, Ph.D., Purdue University*: Econometrics; economic history. Recipient of the State University Chancellor's Award for Excellence in Teaching, 1974.

Pradeep Dubey, *Professor, Ph.D., Cornell University*: Game theory; mathematical economics.

John Hause, *Professor, Ph.D., University of Chicago*: Theory of measurement and economic estimation in human capital; industrial organization; applied microeconomics.



John Hillas, *Assistant Professor, Ph.D., Stanford University*: Game theory; microeconomic theory.

Bryce Hool, *Professor, Ph.D., University of California, Berkeley*: Macroeconomics; general equilibrium theory; monetary theory.

Michael Hurd, *Professor, Ph.D., University of California, Berkeley*: Econometrics; labor; macroeconomics.

Takashi Kamihigashi, *Assistant Professor, Ph.D., University of Wisconsin*: Macroeconomics; international economics; economic theory.

Stefan Mittnik, *Associate Professor, Ph.D., Washington University*: Econometrics; macroeconomics.

Mark Montgomery, *Associate Professor, Ph.D., University of Michigan*: Economic demography; development economics.

Thomas Muench, *Professor, Ph.D., Purdue University*: Mathematical economics; econometrics; urban economics.

Egon Neuberger, *Professor, Ph.D., Harvard University*: Comparative systems; Soviet and East European economics.

Abraham Neyman, *Professor, Ph.D., Hebrew University*: Game theory; mathematical economics.

Sangin Park, *Assistant Professor, Ph.D., Yale University*: Industrial organizations; econometrics; microeconomics.

Warren Sanderson, *Professor, Ph.D., Stanford University*: Joint appointment with History; Economic history; economic demography.

Yair Tauman, *Professor, Ph.D., Hebrew University*: Industrial organization; game theory.

Dieter Zschock, *Professor, Ph.D., Tufts University*: Development economics; labor economics.

Michael Zweig, *Professor, Ph.D., University of Michigan*: Political economy; labor economics. Recipient of the State University Chancellor's Award for Excellence in Teaching, 1991, and the President's Award for Excellence in Teaching, 1991.

Minor in Chinese Studies Minor

Director: Shi Ming Hu, Social Sciences Interdisciplinary

Affiliated Faculty

Iona Man-Cheong, *History*

Gregory A. Ruf, *Social Sciences*

Eli Seifman, *Social Sciences Interdisciplinary*

Ban Wang, *Comparative Studies*

The Chinese studies minor (CNS) is designed for students interested in an interdisciplinary study of China that combines coursework in social and behavioral sciences with that in humanities and fine arts. Students design an individualized program of study with the approval of the director of the Chinese studies minor. Consultation with the director is encouraged for those students considering special opportunities for overseas studies programs.

Department of Earth and Space Sciences

Chairperson: Donald H. Lindsley

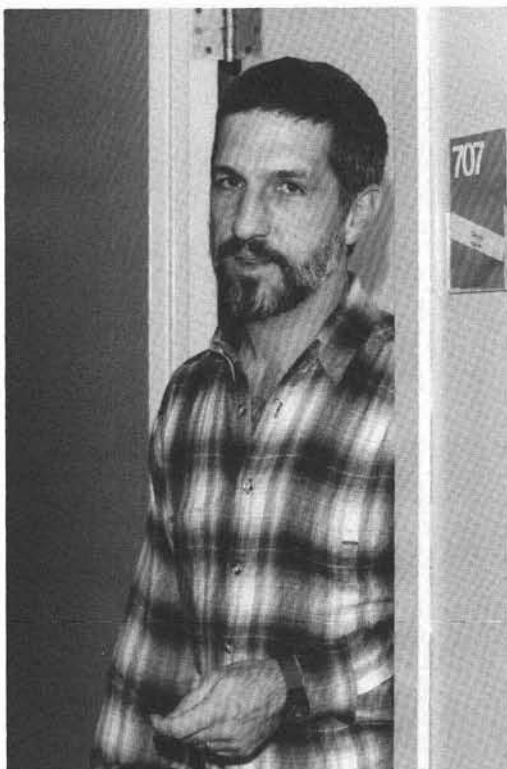
Director of Undergraduate Studies: Scott McLennan

Faculty

Daniel M. Davis, *Associate Professor, Ph.D., Massachusetts Institute of Technology*: Geophysics.

Robert T. Dodd, Jr., *Professor, Ph.D., Princeton University*: Geochemistry.

Gilbert N. Hanson, *Professor, Ph.D., University of Minnesota*: Geochemistry.



William E. Holt, *Associate Professor, Ph.D., University of Arizona*: Geophysics.

Robert C. Liebermann, *Professor and Distinguished Service Professor, Ph.D., Columbia University*: Geophysics.

Donald H. Lindsley, *Professor, Ph.D., The Johns Hopkins University*: Geochemistry; petrology.

Scott M. McLennan, *Professor, Ph.D., Australian National University*: Geochemistry.

William J. Meyers, *Professor, Ph.D., Rice University*: Sedimentology.

Hanna Nekvasil, *Associate Professor, Ph.D., Pennsylvania State University*: Geochemistry; petrology.

John B. Parise, *Professor, Ph.D., James Cook University*: Crystallography; mineral physics.

Richard J. Reeder, *Professor, Ph.D., University of California, Berkeley*: Geochemistry; sedimentology.

Martin A. Schoonen, *Associate Professor, Ph.D., Pennsylvania State University*: Geochemistry.

Donald J. Weidner, *Professor, Ph.D., Massachusetts Institute of Technology*: Geophysics.

Teng-fong Wong, *Professor, Ph.D., Massachusetts Institute of Technology*: Geophysics.

Steven C. Eglebright, *M.S., Curator, State University of New York at Stony Brook*: Geology.

Affiliated Faculty

Robert C. Aller, *Marine Sciences Research Center*

Henry J. Bokuniewicz, *Marine Sciences Research Center*

J. Kirk Cochran, *Marine Sciences Research Center*

Marvin Geller, *Marine Sciences Research Center*

David W. Krause, *Anatomical Sciences*

Charles Nittrouer, *Marine Sciences Research Center*

Teaching Assistants

Estimated number: 12

The field of earth and space sciences is a broadly based multidisciplinary science combining geology, astronomy, atmospheric science and marine science. The major in earth and space sciences leads to the Bachelor of Arts degree and is a diversified program in the natural sciences and mathematics aimed at fostering a basic understanding of the earth and space sciences; it also includes concentrated study in any one of the natural sciences or mathematics or interdisciplinary studies in environmental geoscience. Intended for those seeking a science-related career, the program allows flexible course selection for students who may or may not be planning on graduate studies. The program is flexible in that it is designed to meet the needs of students who desire a more diverse liberal arts and sciences background. The various programs prepare students to choose careers in teaching, law, environmental science, or research in private industry and government.

Department of French and Italian

Chairperson: Charles Franco
Director of Undergraduate Studies: Charle Franco

Faculty

Harriet Allentuch, *Professor and Undergraduate Coordinator in French, Ph.D., Columbia University*: 17th-century French literature; French women writers. Recipient of the State University Chancellor's Award for Excellence in Teaching, 1990, and the President's Award for Excellence in Teaching, 1990.

Carol Blum, *Research Professor of Humanities, Ph.D., Columbia University*: 18th-century French literature; literature of the French Revolution.

Frederick Brown, *Professor, Ph.D., Yale University*: 19th- and 20th-century French literature.

Andrea Fedi, *Assistant Professor, Dottore in Lettere e Filosofia, University of Florence; Ph.D., University of Toronto*: Italian Renaissance literature; historiography.

Paul Ferrotti, *Lecturer, M.A., Rutgers University*: Pedagogy; teaching certification.

Luigi Fontanella, *Professor, Ph.D., Harvard University*: Modern Italian Literature

Charles Franco, *Associate Professor, Ph.D., Rutgers University*: Medieval Italian literature.

Robert Harvey, *Associate Professor, Ph.D., University of California, Berkeley*: Contemporary French literature; critical theory; film. Recipient of the State University Chancellor's Award for Excellence in Teaching, 1996, and the President's Award for Excellence in Teaching, 1996.

E. Anthony Hurley, *Assistant Professor, Ph.D., Rutgers University*: Francophone literature of the Caribbean and Africa; French poetry; 19th-century French literature.

Mikle Ledgerwood, *Assistant Professor and Director of Language Learning Center, Ph.D., University of North Carolina-Chapel Hill*: Education and technology; semiotics; French civilization; Quebec.

Mario B. Mignone, *Professor, Ph.D., Rutgers University*: Contemporary Italian literature.

Sandy Petrey, *Professor, Ph.D., Yale University*: 19th-century French literature; comparative literature; literary theory.

Jacqueline Reich, *Assistant Professor, Ph.D., University of California, Berkeley*: Italian cinema; film theory; gender studies.

ori Repetti, *Associate Professor, Ph.D., University of California, Los Angeles*: Romance linguistics; Italian dialectology; history of the Italian language.

Anthony Rizzuto, *Associate Professor, Ph.D., Columbia University*: 19th- and 20th-century French literature.

Ruth Plaut Weinreb, *Associate Professor, Ph.D., Columbia University*: Pedagogy and 18th-century French literature.

Eléonore M. Zimmermann, *Professor Emerita, Ph.D., Yale University*: 17th-, 19th-, and 20th-century French literature; comparative literature.

Affiliated Faculty

Richard Gambino, *Center for Italian Studies*

Adjunct Faculty

Estimated number: 5

Teaching Assistants

Estimated number: 3

The Department of French and Italian offers a diversified program that meets the needs of all students interested in the study of French or Italian. Those wishing to major in either or both languages are offered several possible concentrations, each structured to assist students preparing for future careers or advanced study. The department also offers a minor in each language and a variety of courses of interest to non-majors, some in translation (see Foreign Literature and Culture Courses Offered in English in the alphabetical listing of Arts and Sciences programs), some in the original language.

of Washington: 17th-century literature; Milton.

Ira Livingston, *Assistant Professor, Ph.D., Stanford University*: Romanticism; literary theory.

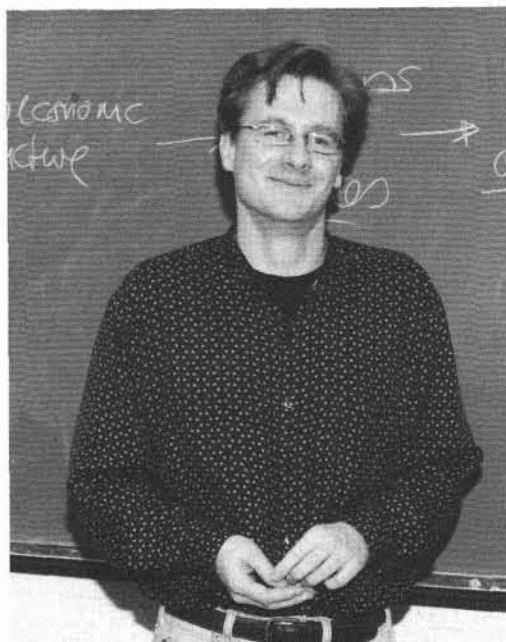
Thomas E. Maresca, *Professor, Ph.D., The Johns Hopkins University*: Restoration and 18th-century literature; the epic; satire.

Joaquin Martinez-Pizarro, *Professor, Ph.D., Harvard University*: Old English; Middle English.

Carolyn McGrath, *Lecturer, M.A., State University of New York at Stony Brook*: Creative writing; composition.

Adrienne Munich, *Professor, Ph.D., City University of New York*: Victorian literature; women's studies.

Gerald B. Nelson, *Associate Professor Emeritus, Ph.D., Columbia University*: 20th-century British and American literature; poetry.



Stacey Olster, *Associate Professor, Ph.D., University of Michigan*: 20th-century British and American literature; the novel. Recipient of the President's Award for Excellence in Teaching, 1986, and the Chancellor's Award for Excellence in Teaching, 1987.

Ron Overton, *Lecturer, M.A., State University of New York at Stony Brook*: Composition and rhetoric; contemporary poetry.

Alice B. Robertson, *Assistant Professor and Director of Writing Programs, Ph.D., Arizona State University*: Composition theory and practice; 19th- and 20th-century American literature.

Carol Rosen, *Professor, Ph.D., Columbia University*: Theory; criticism; modern drama.

Walter Scheps, *Associate Professor, Ph.D., University of Oregon*: Old English; Middle English; the history of the English language.

Sallie Sears, *Associate Professor Emeritus, Ph.D., Brandeis University*: The novel; Henry James; literary criticism; women's studies.

David Sheehan, *Associate Professor, Ph.D., University of Wisconsin*: Restoration and 18th-century literature; Native American literature.

Clifford H. Siskin, *Associate Professor, Ph.D., University of Virginia*: British romanticism; critical theory.

Stephen J. Spector, *Professor and Graduate Studies Director, Ph.D., Yale University*: Old English; Middle English; the history of the English language.

Frances Zak, *Lecturer, Ph.D., State University of New York at Stony Brook*: Composition and rhetoric; 20th-century American literature.

Department of English

Acting Chairperson: Paul J. Dolan

Faculty

Ursula Appelt, *Assistant Professor, Ph.D., University of Virginia*: Renaissance.

Paul B. Armstrong, *Professor, Ph.D., Stanford University*: Modern fiction.

Bruce W. Bashford, *Assistant Professor, Ph.D., Northwestern University*: Literary criticism; rhetoric and composition.

Patricia A. Belanoff, *Associate Professor, Ph.D., New York University*: Composition; Old English; Middle English; rhetoric.

Timothy Brennan, *Associate Professor, Ph.D., Columbia University*: Cross-cultural literary studies; history and theory of criticism.

Dennis A. Clarke, *Lecturer and Director of the Writing Center, M.A., Louisiana State University*: Composition; rhetoric.

Helen Cooper, *Associate Professor, Ph.D., Rutgers University*: Victorian literature; creative writing; women's studies.

Paul J. Dolan, *Associate Professor, Ph.D., New York University*: Modern British and American literature; Yeats; literature and politics.

Cornelius Eady, *Associate Professor and Director of the Poetry Center*: Poetry; creative writing.

Elsa Emeneiser, *Lecturer, Ph.D., State University of New York at Stony Brook*: Modern British and American literature; secondary education.

Diane Fortuna, *Associate Professor, Ph.D., The Johns Hopkins University*: 20th-century British and American literature; 19th-century American literature.

Clare A. Frost, *Lecturer, M.A., State University of New York at Stony Brook*: Composition; creative writing.

Eric Haralson, *Assistant Professor, Ph.D., Columbia University*: American studies.



Laura Henigman, *Assistant Professor, Ph.D., Columbia University*: Early American literature.

Clifford C. Huffman, *Professor, Ph.D., Columbia University*: Renaissance literature; Shakespeare. Recipient of the State University Chancellor's Award for Excellence in Teaching, 1993, and the President's Award for Excellence in Teaching, 1993.

E. Ann Kaplan, *Professor and Director of the Humanities Institute, Ph.D., Rutgers University*: 19th- and 20th-century British and American literature; women's studies; film.

Shirley Strum Kenny, *Professor, Ph.D., University of Chicago*: Restoration and 18th-century British drama.

Thomas Kranidas, *Professor, Ph.D., University*

Department of History

Chairperson: Gary Marker
 Director of Undergraduate Studies: Joel Rosenthal

Faculty

Michael Barnhart, *Professor, Ph.D., Harvard University*: U.S. foreign policy; 20th-century U.S. and modern Japan. Recipient of the State University Chancellor's Award for Excellence in Teaching, 1985, and the President's Award for Excellence in Teaching, 1985.

Karl S. Bottigheimer, *Professor, Ph.D., University of California, Berkeley*: England and Ireland.

David B. Burner, *Professor, Ph.D., Columbia University*: 20th-century U.S. political and social.

Paul W. Chase, *Adjunct Assistant Professor, Ph.D., State University of New York at Stony Brook*: Modern Germany.

Ruth Schwartz Cowan, *Professor, Ph.D., The Johns Hopkins University*: History of biology and technology; women in modern society.

Elizabeth Garber, *Associate Professor, Ph.D., Case Western Reserve University*: History of physics and thermodynamics; European intellectual and social.

Paul Gootenberg, *Associate Professor, Ph.D., University of Chicago*: 19th-century Latin America; Andean; Mexican; economic.

Young Sun Hong, *Assistant Professor, Ph.D., University of Michigan, Ann Arbor*: Modern Germany.

Temma Kaplan, *Professor, Ph.D., Harvard University*: Spain; comparative women's history; popular culture.

Richard F. Kuisel, *Professor, Ph.D., University of California, Berkeley*: Modern Europe; France.

Ned Landsman, *Professor, Ph.D., University of Pennsylvania*: U.S. colonial.

Brooke Larson, *Associate Professor, Ph.D., Columbia University*: Andean history; colonial and modern Latin America.

Herman E. Lebovics, *Professor, Ph.D., Yale University*: Modern European intellectual and social.

Helen Rodnite Lemay, *Professor, Ph.D., Columbia University*: Medieval and Renaissance intellectual; paleography. Recipient of the President's Award for Excellence in Teaching, 1984.

William McAdoo, *Associate Professor, Ph.D., University of Michigan*: Joint appointment with *Interdisciplinary Program in Africana Studies*; U.S. urban, social, and institutional history; immigration historiography; labor history; African-American history.

Iona Man-cheong, *Assistant Professor, Ph.D., Yale University*: Modern China and Japan; modern Chinese women.

Gary Marker, *Professor, Ph.D., University of California, Berkeley*: 18th- and 19th-century Russian social.

Wilbur R. Miller, *Professor, Ph.D., Columbia University*: 19th-century U.S.

Donna J. Rilling, *Assistant Professor, Ph.D., University of Pennsylvania*: U.S. early national; legal; economic; urban; labor.

Joel T. Rosenthal, *Professor, Ph.D., University of Chicago*: Medieval Europe; England.

Ian Roxborough, *Professor, Ph.D., University of Wisconsin-Madison*: Joint Appointment with *Sociology*; Comparative social structures; development; Latin American politics; social change; Latin American labor movements.

Warren Sanderson, *Professor, Ph.D., Stanford University*: Joint appointment with *Economics*; Economic history; economic demography.

Wolf Schafer, *Professor, Ph.D., University of Bremen*: Social history of the sciences and science policy.

Nancy Tomes, *Professor, Ph.D., University of Pennsylvania*: U.S. social, medical, and women's history.

Olufemi Vaughan, *Associate Professor, Ph.D., University of Oxford*: Joint appointment with *Interdisciplinary Program in Africana Studies*; African politics and history; international relations.

Barbara Weinstein, *Professor, Ph.D., Yale University*: Brazil; colonial and modern Latin America; slave societies

Fred Weinstein, *Ph.D. University of California, Berkeley*: Psychohistory; Russia.

John A. Williams, *Associate Professor, Ph.D., University of Wisconsin-Madison*: British Empire; Africa; the Commonwealth; expansion of Europe.

Kathleen Wilson, *Associate Professor, Ph.D., Yale University*: Modern British social and intellectual.



Judith Wishnia, *Associate Professor, Ph.D., State University of New York at Stony Brook*: Joint appointment with *Interdisciplinary Program in Social Sciences*; Women's history; labor history; European history.

Roger Wunderlich, *Research Associate Professor, Ph.D., State University of New York at Stony Brook*: Long Island history.

Affiliated Faculty

Floris Cash, *Africana Studies*
 Leslie H. Owens, *Africana Studies*
 Eli Seifman, *Social Sciences Interdisciplinary*

Department of Hispanic Languages and Literature

Chairperson: Román de la Campa
 Director of Undergraduate Studies: Victoriano Roncero-López

Faculty

Román de la Campa, *Associate Professor, Ph.D., University of Minnesota*: Latin American and Caribbean literature; contemporary critical theory.

Lou Channon-Deutsch, *Professor, Ph.D., University of Chicago*: 18th- and 19th-century Peninsular literature; feminist theory. Recipient of the State University Chancellor's Award for Excellence in Teaching, 1990, and the President's Award for Excellence in Teaching, 1990.

Flora Klein-Andreu, *Associate Professor, Ph.D., Columbia University*: Linguistic meaning; language evolution and variation; standardization; research methods.

Pedro Lastra, *Professor Emeritus, University of Chile*; (*University Professor, University of Chile, 1960-1973*): Colonial, modern, and contemporary Spanish-American literature.

James B. McKenna, *Associate Professor, Ph.D., Harvard University*: 20th-century Hispanic culture and literature.

Elizabeth Monasterios, *Assistant Professor, Ph.D., University of Toronto*: Modern and contemporary Spanish-American literature; Latin American poetry.

Maria Luisa Nunes, *Professor Emerita, Ph.D., City University of New York*: 19th- and 20th-century Luso-Brazilian literatures; women's studies.

Malcolm K. Read, *Professor, Ph.D., University of Wales*: Spanish Golden Age literature and linguistics; Marxist and psychoanalytic literary criticism.

Joan Ramon Resina, *Associate Professor, Ph.D., University of California, Berkeley*: Modern Spanish culture and literature; Catalanian culture and literature.

Elias L. Rivers, *Professor Emeritus, Ph.D., Yale University*: 16th- and 17th-century literature of Spain; sociolinguistic theory of literature.

Victoriano Roncero-López, *Associate Professor, Ph.D., University of Illinois at Urbana-Champaign and Universidad Complutense*: 16th- and 17th-century literature of Spain.

Georgina Sabat-Rivers, *Professor Emerita, Ph.D., The Johns Hopkins University*: Spanish Golden Age and Spanish-American colonial literature.

Antonio Vera-León, *Associate Professor, Ph.D., Princeton University*: 19th- and 20th-century Caribbean literatures; literary theory; interdisciplinary study of narrative.

Department of Germanic and Slavic Languages and Literature

Chairperson: Christina Y. Bethin

Director of Undergraduate Studies: Robert K. Bloomer

Faculty

Christine Anton, *Visiting Assistant Professor, Ph.D., University of North Carolina*: 19th- and 20th-century German literature; German drama; aesthetics; teaching methodology

John F. Bailyn, *Assistant Professor, Ph.D., Cornell University*: Slavic Linguistics; Russian language and linguistics; syntax.

Christina Y. Bethin, *Professor, Ph.D., University of Illinois at Urbana-Champaign*: Slavic linguistics; Russian, Polish, and Ukrainian languages; phonology. Recipient of the State University Chancellor's Award for Excellence in Teaching, 1983.

Robert K. Bloomer, *Assistant Professor, Ph.D., University of Michigan*: Germanic linguistics; morphology; etymology.

Russell E. Brown, *Professor Emeritus, Ph.D., Harvard University*: Modern German literature; expressionist poetry; Trakl; Brecht; Jahn.

Stana Dolezal, *Lecturer, D.A., State University of New York at Stony Brook*: Eastern European literature and culture; Czech language.

Kathryn R. Edmunds, *Assistant Professor, Ph.D., Princeton University*: 18th- and early 19th-century German literature; German women writers; autobiography.

Barbara Elling, *SUNY Distinguished Teaching Professor and Graduate Studies Director, Ph.D., New York University*: Romanticism; German cultural studies. Recipient of the State University Chancellor's Award for Excellence in Teaching, 1973.

Birgit Grosse-Middledorf Viola, *Lecturer, D.A., State University of New York at Stony Brook*: Business German.

Thomas A. Kerth, *Associate Professor, Ph.D., Yale University*: Medieval literature; Middle High German; German poetry. Recipient of the State University Chancellor's Award for Excellence in Teaching, 1992, and the President's Award for Excellence in Teaching, 1992.

Anita Lekic-Trbojevic, *Lecturer, Ph.D., University of Illinois at Chicago Circle*: Serbo-Croatian language, literature, and culture.

Nicholas Rzhovsky, *Associate Professor, Ph.D., Princeton University*: Russian and Soviet literature; Russian theatre; Russian intellectual history.

Timothy Westphalen, *Assistant Professor, Ph.D., Harvard University*: Russian poetry; Russian Symbolism; Russian literature of the 19th century; Bakhtin.

Department of Mathematics

Chairperson: H. Blaine Lawson, Jr., and Anthony Phillips

Director of Undergraduate Studies: Paul Kumpel

Faculty

Michael Anderson, *Professor, Ph.D., University of California, Berkeley*: Differential geometry.

William Barcus, *Professor and Director of the Mathematics Learning Center, D. Phil, University of Oxford, England*: Algebraic topology.

Emili Bifet, *Associate Professor, Ph.D., University of Chicago*: Algebraic geometry.

Christopher Bishop, *Associate Professor, Ph.D., University of Chicago*: Complex Analysis.

Ronald Douglas, *Professor, Ph.D., Louisiana State University*: Operator theory; functional



analysis; operator algebras and index theory.

David Ebin, *Professor, Ph.D., Massachusetts Institute of Technology*: Global analysis; mathematics of continuum mechanics

Adam Epstein, *Assistant Professor, Ph.D., CUNY Graduate School*: Complex analytic dynamics; Riemann surfaces; Teichmüller spaces.

William Fox, *Associate Professor, Ph.D., University of Michigan*: Complex analysis.

Daryl Geller, *Professor, Ph.D., Princeton University*: Analysis.

James Glimm, *Distinguished Professor, Ph.D., Columbia University*: Applied mathematics; numerical analysis.

Detlef Gromoll, *Professor, Ph.D., University of Bonn, Germany*: Differential geometry.

C. Denson Hill, *Professor, Ph.D., New York University*: Partial differential equations; several complex variables.

Lowell Jones, *Professor, Ph.D., Yale University*: Topology.

Anthony Knapp, *Professor, Ph.D., Princeton University*: Lie groups; representation theory.

Irwin Kra, *Professor, Ph.D., Columbia University*: Complex analysis; Kleinian groups.

Paul Kumpel, *Professor, Ph.D., Brown University*: Algebraic topology. Recipient of the State University Chancellor's Award for Excellence in Teaching, 1990, and the President's Award for Excellence in Teaching, 1990.

H. Blaine Lawson, Jr., *Distinguished Professor, Ph.D., Stanford University*: Differential geometry; topology; algebraic geometry.

Claude LeBrun, *Professor, D. Phil, University of Oxford, England*: Complex Analysis; mathematical physics; differential geometry; algebraic geometry.

Mikhail Lyubich, *Professor, Ph.D., Tashkent State University, former Soviet Union*: Dynamical systems.

Marco Martens, *Assistant Professor, Ph.D., Technical University of Delft, the Netherlands*: Dynamical systems.

Bernard Maskit, *Professor, Ph.D., New York University*: Riemann surfaces; Kleinian groups and deformation spaces.

Dusa McDuff, *Professor, Ph.D., Cambridge University, England*: Symplectic topology.

Marie-Louise Michelsohn, *Professor, Ph.D., University of Chicago*: Differential geometry.

John Milnor, *Distinguished Professor and Director of the Institute for Mathematical Sciences, Ph.D., Princeton University*: Dynamical systems.

Yair Minsky, *Assistant Professor, Ph.D., Princeton University*: Low-dimensional geometry and topology.

Anthony Phillips, *Professor, Ph.D., Princeton University*: Differential topology.

Joel Pincus, *Professor, Ph.D., New York University*: Operator theory; integral equations.

Bradley Plohr, *Professor, Ph.D., Princeton University*: Applied mathematics; partial differential equations.

Chih-Han Sah, *Professor, Ph.D., Princeton University*: Elementary mathematics and applications.

Roberto Silvotti, *Assistant Professor, Ph.D., Universität Zurich*: Mathematical physics; algebraic geometry

Dennis Sullivan, *Distinguished Professor, Ph.D., Princeton University*: Dynamical systems; topology; fluid mechanics.

Scott Sutherland, *Lecturer and Director of Computing, Ph.D., Boston University*: Dynamical systems; root finding algorithms; computing.

Leon Takhtajan, *Professor, Ph.D., Leningrad Branch of the Steklov Mathematical Institute, Russia*: Mathematical physics.

Affiliated Faculty

Abraham Neyman, *Applied Mathematics and Statistics*

Michael Taksar, *Applied Mathematics and Statistics*

Kathleen Vernon, *Associate Professor, Ph.D., University of Chicago*: 20th-century Hispanic narrative and film.

Department of Linguistics

Chairperson: Ellen Broselow

Director of Undergraduate Studies: Mark Aronoff

Faculty

Frank Anshen, *Associate Professor and Graduate Studies Director, Ph.D., New York University*: Sociolinguistics.

Mark Aronoff, *Professor, Ph.D., Massachusetts Institute of Technology*: Morphology, writing systems.

John Bailyn, *Assistant Professor, Ph.D., Cornell University*: Syntax, language acquisition, Slavic linguistics.

Ellen Broselow, *Professor, Ph.D., University of Massachusetts-Amherst*: Phonetics, phonology, applied linguistics.

Aaron S. Carton, *Professor Emeritus, Ph.D., Harvard University*: Psycholinguistics; teaching English to speakers of other languages.

Daniel L. Finer, *Associate Professor, Ph.D., University of Massachusetts-Amherst*: Syntax; semantics; language acquisition.

Marie Huffman, *Assistant Professor, Ph.D.,*

University of California, Los Angeles: Phonetics; phonology.

Dorit Kaufman, *Research Assistant Professor, Ph.D., State University of New York at Stony Brook*: TESOL; language attrition.

Richard Larson, *Professor, Ph.D., University of Wisconsin-Madison*: Syntax; semantics.

Kamal K. Sridhar, *Associate Professor, Ph.D., University of Illinois at Urbana-Champaign*: Teaching English to speakers of other languages; bilingualism; English around the world.

S. N. Sridhar, *Professor, Ph.D., University of Illinois at Urbana-Champaign*:

Psycholinguistics; sociolinguistics; second language acquisition; Indian linguistics.

Affiliated Faculty

Christina Bethin, *Germanic and Slavic*

Robert Hoberman, *Comparative Studies*

Minor in

Latin American and Caribbean Studies

Director: Brooke Larson, *History*

Affiliated Faculty

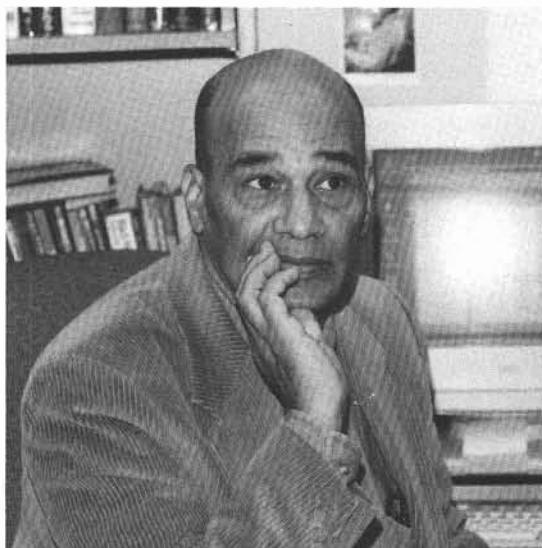
Timothy Brennan, *English*

Jonathan Cohen, *Surgery*

Helen Cooper, *English*

Román de la Campa, *Hispanic Languages and Literature*

Georges Fouron, *Social Sciences Interdisciplinary*



Barbara Frank, *Art*

Paul Gootenberg, *History*

Anthony E. Hurley, *French*

Temma Kaplan, *Women's Studies and History*

Elizabeth Monasterios, *Hispanic Languages and Literature*

Dolores Newton, *Anthropology*

Malcolm Read, *Hispanic Languages and Literature*

Ian Roxborough, *Sociology*

Antonio Vera-León, *Hispanic Languages and Literature*

Kathleen Vernon, *Hispanic Languages and Literature*

Barbara Weinstein, *History*

Dieter Zschock, *Economics*

Department of Music

Chairperson: David Lawton

Director of Undergraduate Studies: Joseph Auner

Faculty

Joseph Auner, *Assistant Professor, Ph.D., University of Chicago*: 19th- and 20th-century history and theory.

Timothy Eddy, *Professor, M.Mus., Manhattan School of Music*: Cello; chamber music.

Sarah Fuller, *Associate Professor, Ph.D., University of California, Berkeley*: Medieval and Renaissance history and theory. Recipient of the President's Award for Excellence in Teaching, 1984.

Perry Goldstein, *Assistant Professor, D.M.A., Columbia University*: Musicianship.

Lazar Gosman, *Professor, Diploma, Moscow State Conservatory; pupil of David Oistrakh*: Violin; chamber music.

Gilbert Kalish, *Professor and Codirector of Contemporary Chamber Players, B.A., Columbia University*: Piano; chamber music.

Richard Kramer, *Professor, Ph.D., Princeton University*: 18th-century history; Beethoven; Schubert.

David Lawton, *Professor and Graduate Studies Director, Ph.D., University of California, Berkeley*: Orchestral and opera conducting; 19th-century history.

Julius Levine, *Professor Emeritus, B.S., Juilliard School of Music*: String bass; chamber music.

Rebecca Leydon, *Visiting Assistant Professor, Ph.D., McGill University*: 20th-century music theory and history.

Judith Lochhead, *Associate Professor, Ph.D., State University of New York at Stony Brook*: 20th-century theory and history.

Timothy Mount, *Associate Professor and Director of Choral Music, D.M.A., University of Southern California*: Choral conducting.

Joyce Robbins, *Professor Emerita, B.S., Juilliard School of Music*: Violin; viola; pedagogy; chamber music.

Daria Semegen, *Associate Professor and Director of Electronic Music Studio, M.Mus., Yale University*: Composition; theory; electronic music.

Sheila Silver, *Associate Professor, Ph.D., Brandeis University*: Composition; theory.

Jane Sugarman, *Assistant Professor, Ph.D., University of California, Los Angeles*: Ethnomusicology; world music cultures. Recipient of the State University Chancellor's Award for Excellence in Teaching, 1995, and the President's Award for Excellence in Teaching, 1995.

Daniel Weymouth, *Assistant Professor and Director of Computer Music Studio, Ph.D., University of California, Berkeley*: Composition; computer music and technology.

Peter Winkler, *Associate Professor, M.F.A., Princeton University*: Composition; theory; popular music. Recipient of the State University Chancellor's Award for Excellence in Teaching, 1977.

Performing Artists in Residence

Misha Amory, *M.M., Juilliard School of Music*: viola, chamber music.

Ronald Anderson, *M.S., Juilliard School of Music; Ed.D., Columbia University*: Trumpet; chamber music.

Samuel Baron, *Emeritus, B.S., Juilliard School of Music; pupil of George Barrere and Arthur Lora*: Flute; chamber music.

Elaine Bonazzi, *B. Mus., Eastman School of Music*: Voice; opera workshop.

Miriam Burns, *Director of the University Orchestra, M.M., Mannes College of Music*: Conducting.

Todd Coolman, *Director of the Jazz Ensemble, M.M., Manhattan School of Music*: Jazz studies.

Richard Cross, *B.A., Cornell University*: Voice; opera workshop.

Christina Dahl, *M.M. Peabody Conservatory*: Piano, accompaniment, chamber music.

Raymond Des Roches, *Codirector of Contemporary Chamber Players, M.Mus., Manhattan School of Music*: Percussion; chamber music.

Bruce Engel, *Director of the University Wind Ensemble, M.M., Juilliard School of Music*: Conducting.

Dennis Godburn, *B.Mus., Hartt School of Music*: Bassoon; chamber music.

Arthur Haas, *M.A., University of California, Los Angeles*: Harpsichord; performance of early music.

Gustav Meier, *Director of the Stony Brook Symphony Orchestra, Diploma, Zurich Conservatory of Music*: Conducting

Thomas Muraco, *M.Mus., Eastman School of Music*: Vocal coach.

Charles Neidich, *B.A., Yale University; Diploma, Moscow State Conservatory*: Clarinet; chamber music.

William Purvis, *M.Mus., Hunter College*: Horn; chamber music.

Stephen Taylor, *Diploma, Juilliard School of Music*: Oboe, chamber music.

Jerry Willard, *Cleveland Institute of Music; study with John Williams and Misha Mishakoff*: Guitar; chamber music.

Minor in

Middle Eastern Studies

Minor Coordinator: Robert Hoberman, *Comparative Studies*

Affiliated Faculty

Said Arjomand, *Sociology*

Ellen Broselow, *Linguistics*

William Chittick, *Comparative Studies*

Robert Goldenberg, *Comparative Studies*

Sachiko Murata, *Comparative Studies*

Elizabeth Stone, *Anthropology*

Minor in

Medieval Studies

Minor Coordinator: Charles Franco, *French and Italian*

Affiliated Faculty

Sarah Fuller, *Music*

Aaron W. Godfrey, *Comparative Studies*

Jacques Guilmain, *Art*

Thomas Kerth, *Germanic and Slavic Languages and Literatures*

Helen Rodnite Lemay, *History*

Joaquin Martinez-Pizarro, *English*

Clyde Lee Miller, *Philosophy*

Joel Rosenthal, *History*

Walter Scheps, *English*

Stephen Spector, *English*

Louise Vasvari, *Comparative Studies*

Department of Philosophy

Chairperson: Edward S. Casey

Director of Undergraduate Studies: Gary Mar

Faculty

David B. Allison, *Associate Professor, Ph.D., Pennsylvania State University*: Contemporary European philosophy.

Kenneth Baynes, *Associate Professor, Ph.D., Boston University*: Social and political philosophy; moral theory; modern and contemporary German philosophy.

Edward S. Casey, *Professor, Ph.D., Northwestern University*: Psychoanalysis; aesthetics; phenomenology; philosophy of mind; philosophy of place and space.

Robert Crease, *Associate Professor, Ph.D., Columbia University*: Philosophy of science; aesthetics; modern philosophy.

David A. Dilworth, *Professor, Ph.D., Fordham University; Ph.D., Columbia University*: History of philosophy; Chinese and Japanese philosophy.

Jeffrey Edwards, *Assistant Professor, Ph.D., Universität Marburg*: History of modern philosophy; Kant and German idealism; ethics and political philosophy.

Patrick Grim, *Professor, Ph.D., Boston University*: Ethics; logic; contemporary analytic philosophy. Recipient of the State University President's and Chancellor's Award for Excellence in Teaching, 1988, Academy of Teacher-Scholars, 1996.

Dick Howard, *Professor, Ph.D., University of Texas*: Political and social philosophy.

Don Ihde, *Professor, Ph.D., Boston University*: Phenomenology; philosophy of technology; hermeneutics.

Eva Feder Kittay, *Professor, Ph.D., City University of New York*: Philosophy of language; philosophy and literature; feminism; ethics; political and social philosophy.

Peter Ludlow, *Associate Professor, Ph.D., Columbia University*: Philosophy of linguistics; philosophy of cognitive science; philosophy of language.

Gary Mar, *Associate Professor, Ph.D., University of California, Los Angeles*: Logic; philosophy of mathematics; contemporary analytic philosophy; Asian American studies; philosophy of religion. Recipient of the State University President's and Chancellor's Award for Excellence in Teaching, 1993, Alumni Association Outstanding Professor Award, 1995, the Pew Foundation Fellowship, 1995-1996, Academy of Teacher-Scholars, 1996.

Clyde Lee Miller, *Associate Professor, Ph.D., Yale University*: History of philosophy. Recipient of the State University Chancellor's Award for Excellence in Teaching, 1980, NY State/UUP

Excellence Award, 1991, and the SPD Bentley Glass Great Teacher Award, 1996.

Rita D. Nolan, *Professor, Ph.D., University of Pennsylvania*: Theory of knowledge; philosophy of language; foundations of cognitive science; Wittgenstein; feminism.

Mary C. Rawlinson, *Associate Professor, Ph.D., Northwestern University*: 19th-century philosophy; philosophy of medicine; aesthetics and literary theory; Hegel, philosophical psychology. Recipient of the State University President's and Chancellor's Award for Excellence in Teaching, 1994.

Hugh J. Silverman, *Professor, Ph.D., Stanford University*: Continental philosophy, cultural and aesthetic theory, philosophy and literature.

Recipient of the State University Chancellor's Award for Excellence in Teaching, 1977.

Michael A. Simon, *Professor, Ph.D., Harvard University; J.D., Cardozo School of Law*: Social and legal philosophy; philosophy of science.

Marshall Spector, *Professor, Ph.D., The Johns Hopkins University*: Philosophy of science; philosophy of technology, and environmental issues.

Donn Welton, *Associate Professor, Ph.D., Southern Illinois University*: Phenomenology; theories of meaning and truth, philosophical psychology, and Husserl studies.

Peter Williams, *Associate Professor, J.D., Ph.D., Harvard University*: Philosophy of law; ethics. Recipient of the State University Chancellor's



Award for Excellence in Teaching, 1978.

Affiliated Faculty

Donald Kuspit, *Art*

Peter Manchester, *Comparative Studies*

Department of Pharmacology

Chairperson: Arthur A. Grollman

Director of Undergraduate Studies: Jean M. Devlin

Faculty

Paul R. Adams, *Professor, Ph.D., London University, England*: Ion channels and synaptic transmission.

Miguel Berrios, *Assistant Professor, Ph.D., Rockefeller University*: Characterization of the nucleoskeleton; nuclear pore complexes.

Daniel Bogenhagen, *Professor, M.D., Stanford University*: Mitochondrial molecular biology; 5S RNA gene expression.

Carlos de los Santos, *Research Assistant Professor, Ph.D. University of Buenos Aires, Argentina*. NMR solution structure of nucleic acids and proteins.

Jean M. Devlin, *Assistant Professor, B.S., London University, England*: Physiological and molecular pharmacology.

Colin Dingwall, *Assistant Professor, Ph.D. University of Cambridge, England*: Nuclear protein transport and the biochemistry of the nuclear pore complex.

Moises Eisenberg, *Associate Professor, Ph.D., California Institute of Technology*: Molecular modeling of biomolecules.

JoAnne Engebrecht, *Assistant Professor, Ph.D., University of California, San Diego*: Mechanism of meiotic chromosome segregation.

Paul A. Fisher, *Associate Professor, M.D., Ph.D., Stanford University*: The extrachromosomal karyokeleton/eukaryotic DNA replication.

Michael Frohman, *Assistant Professor, M.D., Ph.D., University of Pennsylvania*: Control of gene expression during mammalian embryogenesis.

Arthur P. Grollman, *Professor, M.D., The Johns*

Hopkins University: Molecular mechanism of cardinogenesis and DNA repair.

Charles R. Iden, *Associate Professor, Ph.D., The Johns Hopkins University*: DNA damage produced by genotoxic substances.

Francis Johnson, *Professor, Ph.D., Glasgow University*: Inhibition of HIV-1 (AIDS) using rationally designed drugs; effects of chemical carcinogens on DNA.

Craig C. Malbon, *Leading Professor, Ph.D., Case Western Reserve University*: Signal transduction during differentiation and development: roles of G-proteins.

Andrew J. Morris, *Assistant Professor, Ph.D., University of Birmingham*: Roles of phospholipids in cellular signaling.

Joav Prives, *Associate Professor, Ph.D., McGill University*: Regulation of surface receptors in muscle cells.

Edward Reich, *Distinguished Professor, M.D., Ph.D. The Johns Hopkins University*: Biochemistry of plasma proteins: new therapeutic systems.

Thomas A. Rosenquist, *Research Assistant Professor, Ph.D., University of Wisconsin*: Genetic analysis of mammalian DNA repair; genetic analysis of fibroblast growth factors.

Shinya Shibutani, *Research Associate Professor, Ph.D., Toyama Medical and Pharmaceutical University*: Mechanisms of translesional DNA synthesis.

Sidney Strickland, *Professor, Ph.D., University of Michigan*: Protease function in mammalian memory and neuronal degeneration; Genetics of early development.

Joel L. Sussman, *Research Professor, Ph.D. Massachusetts Institute of Technology*: 3-D structural studies of proteins and nucleic acid.

Stella-Anna E. Tsiarka, *Research Assistant Professor, Ph.D., Aristotelian University of Thessaloniki*: Extracellular proteolysis in hippocampal function and degeneration.

William Van der Kloot, *Professor, Ph.D., Harvard University*: Acetylcholine; quanta; neuromuscular junction; synapse; neurotransmitter.

David Williams, *Professor, Ph.D., University of Illinois at Urbana-Champaign*: Hormonal regulation of mRNA stability; molecular biology of carcinogenesis and DNA repair.

Department of Physics

Chairperson: Peter Paul

Director of Undergraduate Studies: Peter B. Kahn



Faculty

Philip B. Allen, *Professor, Ph.D., University of California, Berkeley*: Theoretical solid-state physics; superconductors and superconductivity.

Dimitri Averin, *Associate Professor, Ph.D., Moscow State University*: Solid-state physics.

Marc Baarmand, *Assistant Professor, Ph.D., University of Wisconsin-Madison*: High-energy physics.

Ilan Ben-Zvi, *Adjunct Professor, Ph.D., Weizmann Institute*: Accelerator and beam physics.

Thomas Bergeman, *Research Professor, Ph.D., Harvard University*: Theoretical atomic physics.

Gerald E. Brown, *Distinguished Professor, Ph.D., Yale University; D.Sc., University of Birmingham*: Theoretical nuclear physics. Member, Institute for Theoretical Physics.

Robert L. deZafra, *Professor, Ph.D., University of Maryland at College Park*: Experimental atmospheric sciences: remote sensing, stratospheric dynamics and trace constituent measurements, millimeter-wave spectroscopy.

Roderich Engelmann, *Professor, Ph.D., University of Heidelberg*: Experimental elementary particle physics.

Richard C. Fernow, *Adjunct Professor, Ph.D., Syracuse University*: Experimental accelerator physics.

David B. Fossan, *Professor, Ph.D., University of Wisconsin-Madison*: Experimental nuclear physics; nuclear structure and reactions.

Marvin Geller, *Adjunct Professor, Ph.D., Massachusetts Institute of Technology*: Atmospheric dynamics.

Alfred S. Goldhaber, *Professor, Ph.D., Princeton University*: Theoretical physics; nuclear theory; particle physics. Member, Institute for Theoretical Physics.

Vladimir J. Goldman, *Associate Professor, Ph.D., University of Maryland at College Park*: Experimental condensed matter physics.

Erlend H. Graf, *Associate Professor, Ph.D., Cornell University*: Experimental low-temperature physics.

Paul D. Grannis, *Professor, Ph.D., University of California, Berkeley*: Experimental high-energy physics; elementary particle reactions.

Michael Gurvitch, *Professor, Ph.D., State University of New York at Stony Brook*: Experimental solid-state physics.

Siyuan Han, *Research Associate Professor, Ph.D., Iowa State University*: Experimental solid-state and X-ray physics.

Thomas Hemmick, *Associate Professor, Ph.D., University of Rochester*: Experimental relativistic heavy-ion nuclear physics. Recipient of the State University President's Award for Excellence in Teaching, 1996. Recipient of the State University Chancellor's Award for Excellence in Teaching, 1996.

Barbara Jacak, *Professor, Ph.D., Michigan State University*: Experimental nuclear physics; relativistic heavy ions.

Andrew D. Jackson, *Professor, Ph.D., Princeton University*: Nuclear theory.

Chris Jacobsen, *Associate Professor, Ph.D., State University of New York at Stony Brook*: X-ray physics.

Jainendra Jain, *Professor, Ph.D., State University of New York at Stony Brook*: Theoretical solid-state physics.

Chang Kee Jung, *Associate Professor, Ph.D., Indiana University*: Experimental high-energy physics.

Peter B. Kahn, *Professor, Ph.D., Northwestern University*: Theoretical physics; nonlinear dynamics.

Janos Kirz, *Distinguished Professor, Ph.D., University of California, Berkeley*: X-ray optics. Recipient of the State University Chancellor's Award for Excellence in Teaching, 1976.

Peter M. Koch, *Professor, Ph.D., Yale University*: Experimental atomic physics; quantum chaos; nonlinear dynamics.

Vladimir Korepin, *Professor, Ph.D., Leningrad University*: Exactly solvable models in quantum field theory. Member, Institute for Theoretical Physics.



T.T.S. Kuo, *Professor, Ph.D., University of Pittsburgh*: Nuclear theory.

Linwood L. Lee, Jr., *Professor, Ph.D., Yale University*: Experimental nuclear structure.

Konstantin Likharev, *Professor, Ph.D., Moscow State University*: Solid-state physics.

James Lukens, *Professor, Ph.D., University of California, San Diego*: Experimental solid-state physics.

Robert L. McCarthy, *Professor, Ph.D., University of California, Berkeley*: Experimental elementary particle physics.

Barry M. McCoy, *Professor, Ph.D., Harvard University*: Statistical mechanics. Member, Institute for Theoretical Physics.

Robert L. McGrath, *Professor, Ph.D., University of Iowa*: Experimental physics; nuclear structure.

John H. Marburger, *Professor and former President of the University at Stony Brook, Ph.D., Stanford University*: Laser theory.

Michael Marx, *Professor, Ph.D., Massachusetts Institute of Technology*: Experimental high-energy and relativistic heavy ion physics.

Emilio Mendez, *Professor, Ph.D., Director of the Institute for Interface Phenomena, Massachusetts Institute of Technology*: Solid-state experimental physics.

Harold J. Metcalf, *Professor, Ph.D., Brown University*: Atomic physics; laser cooling and trapping; atom optics, precision Stark spectroscopy, lasers and optics teaching. Recipient of the State University Chancellor's Award for Excellence in Teaching, 1974.

Laszlo Mihaly, *Professor, Ph.D., University of Budapest*: Experimental low-temperature physics.

Richard A. Mould, *Associate Professor, Ph.D., Yale University*: Theoretical physics; general relativity; quantum theory of measurements.

Herbert R. Muether, *Professor Emeritus, Ph.D., Princeton University*: Experimental nuclear physics; neutron physics. Recipient of the State University Chancellor's Award for Excellence in Teaching, 1978.

Robert Nathans, *Professor, Ph.D., University of Pennsylvania*: Energy; policy planning.

Hwa-Tung Nieh, *Professor, Ph.D., Harvard University*: Theoretical physics; elementary particles. Member, Institute for Theoretical Physics.

Luis Orozco, *Associate Professor, Ph.D., University of Texas at Austin*: Experimental atomic physics.

Robert Palmer, *Adjunct Professor, Ph.D., Imperial College*: Accelerator physics.

Peter Paul, *Distinguished Service Professor, Ph.D., University of Freiburg*: Experimental nuclear physics.

Madappa Prakash, *Research Assistant Professor, Ph.D., University of Bombay, India*: Theoretical nuclear physics.

Michael Rijssenbeek, *Professor, Ph.D., University of Amsterdam*: Experimental high-energy physics.

Martin Rocek, *Professor, Ph.D., Harvard University*: Theoretical physics. Member, Institute for Theoretical Physics.

Robert Shrock, *Professor, Ph.D., Princeton University*: Theoretical physics; gauge theories, statistical mechanics. Member, Institute for Theoretical Physics.

Department of Physical Education

Chairperson: John DeMarie

Faculty

David B. Alexander, *Instructor, part time, M.S., Adelphi University*: Swimming.

Peter G. Angelo, *Assistant Professor, Ph.D., State University of New York at Stony Brook*: Aquatics; first aid and cardiopulmonary resuscitation.

Norman Berhannan, *Lecturer, M.A.L.S., University at Stony Brook*: General physical education.

David Caldiero, *Instructor, M.S., University of Bridgeport*: Football; general physical education.

John DeMarie, *Associate Professor, M.A., Adelphi University*: General physical education.

Susan DiMonda, *Assistant Professor, M.A., Adelphi University*: General physical education.

Paul J. Dudzick, *Associate Professor, M.A., State University of New York at Stony Brook*: General physical education.

John Espey, *Associate Professor, M.A., University of North Carolina at Chapel Hill*: Lacrosse; general physical education.

Beckie Francis, *Lecturer, M.A., Niagara University*: Women's basketball.

Nobuyoshi Higashi, *Associate Professor, part time, M.A., New York University*: Self-defense; judo.

Samuel B. Kornhauser, *Associate Professor, M.S., Southern Illinois University*: Football; general physical education.

Kathryn Ann Koshansky, *Associate Professor, M.S., University of Illinois at Urbana-Champaign*: Athletic training. Recipient of the State University Chancellor's Award for Excellence in Teaching, 1989, and the President's Award for Excellence in Teaching, 1989.

Richard Laskowski, *Professor, Ed.D., St. John's University*: General physical education.

Gregory Laub, *Lecturer, part time, M.B.A., Adelphi University*: First aid and cardiopulmonary resuscitation.

Nell Lee, *Lecturer, part time, M.A.L.S., University at Stony Brook*: Women's tennis; general physical education.

George Lukemire, *Assistant Professor, part time, B.S., Cornell University*: Horsemanship.

Colin A. Martindale, *Associate Professor and Director of Professional Studies, Ph.D., City University of New York*: General physical education.

James Meegan, *Lecturer, part time, M.A., Adelphi University*: Track and cross country.

Jeannean Mercuri, *Lecturer, part time, B.A., University at Stony Brook*: General physical education.

Richard B. Miekley, Jr., *Instructor, M.S., Ohio University*: Athletic training; general physical education.

Masataka Mori, *Associate Professor, part time, B.A., Takushoku University*: Self-defense; karate.

Susan Ryan, *Assistant Professor, M.A., State University of New York at Stony Brook*: Soccer; general physical education.

Matthew Senk, *Lecturer, part time, B.S., State University College at Cortland*: Baseball.

Mansour Tabibnia, *Lecturer, part time, B.A., St. John's University*: Men's tennis.

Eric Teepe, *Lecturer, B.S., Averett College*: Women's soccer.

Theresa Tiso, *Associate Professor, M.S., State University College at Cortland*: Volleyball; wellness; general physical education.

Bernard Tomlin, *Lecturer, B.A., Hofstra University*: Men's basketball

David Villano, *Lecturer, part time, Certificate, Dance Educators of America*: General physical education.

Sandra Weeden, *Associate Professor and Director of Athletics, M.Ed., University of North Carolina at Greensboro*: General physical education.

Department of Political Science

Chairperson: Mark Schneider

Director of Undergraduate Studies: Frank Myers

Faculty

Clifford J. Carrubba, *Assistant Professor, Ph.D., Stanford University*: Political economy; comparative politics.



Albert D. Cover, *Associate Professor, Ph.D., Yale University*: American politics and institutions; legislative politics.

James F. X. Doyle, *Lecturer, part time, J.D., Fordham University*: Administrative law.

Stanley Feldman, *Professor, Ph.D., University of Minnesota*: Political behavior and political sociology; logic of inquiry and research design; statistics.

Patricia Filiberto, *Lecturer, part time, J.D., St. Johns University*: Criminal law.

Yassin El-Ayouty, *Lecturer, part time, J.D., Benjamin N. Cardozo School of Law*: International law.

Leonie Huddy, *Associate Professor, Ph.D., University of California, Los Angeles*: Political psychology; public opinion.

Elliot Kleinman, *Lecturer, part time, J.D., Brooklyn Law School*: Business law.

Lee E. Koppelman, *Professor, D.P.A., New York University*: Regional planning; resource management.

Milton Lodge, *Professor, Ph.D., University of Michigan*: Political psychology; political behavior.

Kathleen McGraw, *Professor, Ph.D., Northwestern University*: Social psychology; cognition; research methods; psychology and the law.

Michael Manoussos, *Lecturer, part time, J.D., Detroit College of Law*: Personal injury.

Carla E. Molette-Ogden, *Assistant Professor, Ph.D., Washington University at St. Louis*: American politics; international relations; political economy; comparative politics.

Frank Myers, *Professor, Ph.D., Columbia University*: Comparative politics; political theory.

Helmut Norpoth, *Professor, Ph.D., University of Michigan*: Political behavior; legislative process; research process; research methods.

Myra D. Rochelson, *Lecturer, part time, J.D., Hofstra University School of Law*: Appellate Practice.

Howard A. Scarrow, *Professor, Ph.D., Duke University*: Comparative politics; American government; political parties. Recipient of the State University Chancellor's Award for Excellence in Teaching, 1987, and the President's Award for Excellence in Teaching, 1987.

Mark Schneider, *Professor, Ph.D., University of North Carolina at Chapel Hill*: Public policy; urban politics.

John Scholz, *Professor, Ph.D., University of California, Berkeley*: Public policy; public administration.

Jeffrey A. Segal, *Professor, Ph.D., Michigan State University*: American institutions; constitutional and public law.

Charles Taber, *Associate Professor, Ph.D., University of Illinois at Urbana-Champaign*: International relations; political psychology; foreign policy.

Juli Teske, *Associate Professor and Graduate Studies Director, Ph.D., Princeton University*: Political economy; urban politics; regulatory policy.

Richard J. Timpone, *Assistant Professor, Ph.D., State University of New York at Stony Brook*: American government; political psychology; methodology.

Steven R. Van Winkle, *Assistant Professor, Ph.D., Ohio State University*: American politics; statistical methods and formal theory; public opinion.

Affiliated Faculty

Jeff T. Casey, *Harriman School*

Lester Paldy, *Technology and Society*

Olufemi O. Vaughan, *Africana Studies*

Barbara Weinstein, *History/Latin America*

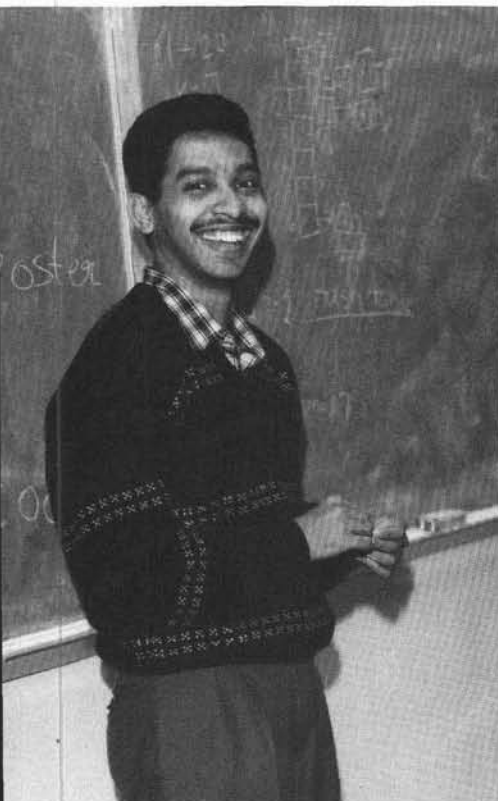
Department of Psychology

Chairperson: Jasper Brener

Director of Undergraduate Studies: Richard Gerring

Faculty

Brenda J. Anderson, *Assistant Professor, Ph.D., University of Illinois*: Physiological mechanisms of learning and memory; human brain mapping.



Arthur Aron, *Associate Professor, Ph.D., University of Toronto*: Motivation and cognition in close relationships; intergroup relations; methodology.

Robert Boice, *Professor Emeritus, Ph.D., Michigan State University*: Procrastination and blocking in writing.

Dana Bramel, *Professor Emeritus, Ph.D., Stanford University*: Intergroup attitudes; social class.

Jasper Brener, *Professor, Ph.D., University of London*: Cardiovascular psychophysiology; behavioral energetics; autonomic learning.

Susan Brennan, *Associate Professor, Ph.D., Stanford University*: Psycholinguistics; human-computer interaction.

Darla Broberg, *Adjunct Assistant Professor, Ph.D., University of Washington*: Clinical psychology; psychiatry.

Edward G. Carr, *Professor, Ph.D., University of California, San Diego*: Behavior modification; developmental disabilities.

David Cross, *Associate Professor, Ph.D., University of Michigan*: Psychophysics; mathematical models.

Thomas J. D'Zurilla, *Associate Professor, Ph.D., University of Illinois at Urbana-Champaign*: Cognitive-behavior therapy; social problem solving; problem-solving therapy.

David S. Emmerich, *Professor, Ph.D., Indiana University*: Sensory processing; perception.

Nancy J. Franklin, *Associate Professor, Ph.D., Stanford University*: Memory; spatial cognition; mental models of dynamic physical systems.

Robert W. Frick, *Adjunct Assistant Professor, Ph.D., University of Washington*: Cognitive psychology; human learning.

Ronald Friend, *Professor, Ph.D., University of Toronto*: Social psychology; health psychology.

Richard Gerrig, *Associate Professor, Ph.D., Stanford University*: Cognitive psychology; understanding literature.

Marvin R. Goldfried, *Professor, Ph.D., State University of New York at Buffalo*: Behavioral assessment; cognitive behavior therapy.

Paul S. Kaplan, *Adjunct Assistant Professor, Ph.D., New York University*: Developmental psychology.

Edward S. Katkin, *Professor, Ph.D., Duke University*: Psychophysiological disorders; assessment of emotions.

Daniel N. Klein, *Professor, Ph.D., State University of New York at Buffalo*: Mood disorders; psychopathology.

Lauren Krupp, *Adjunct Associate Professor, M.D., Albert Einstein College of Medicine*: Neurology; headaches; neuroimmunology.

Marvin Levine, *Professor Emeritus, Ph.D., University of Wisconsin-Madison*: Human learning with emphasis on cognitive functions.

Robert M. Liebert, *Professor, Ph.D., Stanford University*: Observational learning; laboratory methodology; statistics.

Marci Lobel, *Associate Professor, Ph.D., University of California, Los Angeles*: Health psychology; stress and coping; women's health.

H. William Morrison, *Associate Professor Emeritus, Ph.D., University of Michigan*: Perception of abstract relations; instructional techniques.

Marc Nathan, *Adjunct Professor, Ph.D., University of Washington*: Stress-induced hypertension; effects of drugs on learning and memory.

John Neale, *Professor, Ph.D., Vanderbilt University*: Schizophrenia; emotion.

K. Daniel O'Leary, *Distinguished Professor, Ph.D., University of Illinois at Urbana-Champaign*: Marital discord; spouse abuse; depression in marriage.

Susan G. O'Leary, *Professor, Ph.D., State University of New York at Stony Brook*: Child and family problems.

David M. Pomeranz, *Associate Professor Emeritus, Ph.D., University of Rochester*: Environmental psychology; behavior modification.

Howard C. Rachlin, *Distinguished Professor, Ph.D., Harvard University*: Choice; self-control; gambling; decision making.

Suparna Rajaram, *Assistant Professor, Ph.D., Rice University*: Human memory.

John Robinson, *Assistant Professor, Ph.D., University of New Hampshire*: Animal behavior; learning and memory; psychobiology.

Arthur G. Samuel, *Professor, Ph.D., University of California, San Diego*: Cognitive psychology; speech perception; psychology of language; perception.

Nancy K. Squires, *Associate Professor, Ph.D., University of California, San Diego*: Human neuropsychology and electrophysiology.

Sarah Hall Sternglanz, *Adjunct Assistant Professor, Ph.D., Stanford University*: Development; gender roles.

Zvi Strassberg, *Assistant Professor, Ph.D., Vanderbilt University*: Behavioral problems in children; abnormal psychology; developmental psychology; aggression.

Stuart Valins, *Professor, Ph.D., Columbia University*: Stress and social interaction.

Dina Vivian, *Research Assistant Professor, Ph.D., State University of New York at Stony Brook*: Spouse abuse; cognitive processes in dyadic communication; marital therapy.

Everett Waters, *Professor, Ph.D., University of Minnesota*: Social and personality development.

Harriet S. Waters, *Associate Professor, Ph.D., University of Minnesota*: Memory and cognitive development.

Gerdi Weidner, *Associate Professor, Ph.D., Kansas State University*: Health psychology; personality.

Grover J. Whitehurst, *Professor, Ph.D., University of Illinois at Urbana-Champaign*: Early intervention for children at risk; language disorders.

Camille B. Wortman, *Professor, Ph.D., Duke University*: Health psychology; stress; coping with loss.

Paul M. Wortman, *Professor, Ph.D., Carnegie-Mellon University*: Program evaluation and applied research; health interventions; meta-analysis.

Affiliated Faculty

Janet Fischel, *Pediatrics*

Richard Friedman, *Psychiatry*

John H. Gagnon, *Sociology*

Manuel London, *Harriman School*

Jan Loney, *Psychiatry*

Kathleen M. McGraw, *Political Science*

Lawrence P. Morin, *Psychiatry*

Joyce Sprafkin, *Psychiatry*

Arthur A. Stone, *Psychiatry*

Robert Strecker, *Psychiatry*

Rex Wang, *Psychiatry*

Gerrit Wolf, *Harriman School*

Interdisciplinary Program in Social Sciences

Program Director: Eli Seifman

Director of Undergraduate Studies: Shi Ming Hu

Faculty

Barbara Baskin, *Associate Professor Emerita, Ed.D., Wayne State University*: Special education.

Beverly Birns, *Professor Emerita, Ph.D., Columbia University*: Child and family studies; child development; psychology of women; social policy.



Georges Fouron, *Associate Professor, Ed.D., Columbia University*: Social studies education; bilingual education.

Kenneth D. Gadow, *Professor, Ph.D., University of Illinois at Urbana-Champaign*: Special education.

Joan F. Kuchner, *Lecturer, Ph.D., University of Chicago*: Child and family studies; child development; social policy.

Shi Ming Hu, *Distinguished Teaching Professor, Ed.D., Columbia University*: Chinese; Asian studies; social science education. Recipient of the State University Chancellor's Award for Excellence in Teaching, 1989, the President's Award for Excellence in Teaching, 1989, and the Alumni Association Outstanding Professor Award, 1996.

Gregory A. Ruf, *Assistant Professor, Ph.D., Columbia University*: Modern China; cultural anthropology.

Eli Seifman, *Distinguished Service Professor, Ph.D., New York University*: Asian studies; modern China; social science education.

Judith Wishnia, *Associate Professor, Ph.D., State University of New York at Stony Brook*: Women's history; labor history; European history.

Affiliated Faculty

Joel T. Rosenthal, *History*

Minor in

Women's Studies

Director: Temma Kaplan, *History*

Faculty

Beverly Haviland, *Associate Professor, Ph.D., Princeton University*: 19th and 20th-century American, English, and French literature; feminist theory; psychoanalysis; women's writing.

Temma Kaplan, *Professor, Ph.D., Harvard University*: Comparative history; 20th-century social movements of women.

Carole Kessner, *Assistant Professor, part time, Ph.D., State University of New York at Stony Brook*: Women and Judaism; women and ethnicity.

Connie Koppelman, *Lecturer, part time, Ph.D., State University of New York at Stony Brook*: Women in Long Island history; Long Island women artists.

Adrienne Munich, *Professor, Ph.D., City University of New York*: Victorian studies; feminist theory.

Sarah Hall Sternglanz, *Lecturer, Ph.D., Stanford University*: Psychology of women; sex role development.

Affiliated Faculty

Harriet Allentuch, *French and Italian*

Frank Anshen, *Linguistics*

William Arens, *Anthropology*

Diane Barthel, *Sociology*

Beverly Birns, (*Emerita*) *Social Sciences Interdisciplinary*

Michele Helene Bogart, *Art*

Ruth S. Bottigheimer, *Comparative Studies*

Barbara Brand, *Library*

Ruth Brandwein, *Social Welfare*

Floris Barnett Cash, *Africana Studies*

Lou Charnon-Deutsch, *Hispanic Languages and Literature*

Helen Cooper, *English*

Ruth Schwartz Cowan, *History*

Barbara Elling, *Germanic and Slavic Languages and Literatures*

Ann Gibson, *Art*

Norman Goodman, *Sociology*

Robert O. Hawkins, (*Emeritus*) *Allied Health Professions*

Laura Henigman, *English*

Leonie Huddy, *Political Science*

Heidi Hutner, *English*

Don Ihde, *Philosophy*

Nilufer Isvan, *Sociology*

E. Ann Kaplan, *English*

Michael Kimmel, *Sociology*

Eva Feder Kittay, *Philosophy*

Joan Kuchner, *Social Sciences Interdisciplinary*

Brooke Larson, *History*

Helen Lemay, *History*

Ira Livingston, *English*

Marci Lobel, *Psychology*

Judith Lochhead, *Music*

Iona Man-Cheong, *History*

Rita Nolan, *Philosophy*

Lester Paldy, *Technology and Society*

Ilona Rashkow, *Comparative Studies*

Mary Rawlinson, *Philosophy*

Carol Rosen, *English*

Joel Rosenthal, *History*

Jane Sugarman, *Music*

Nancy Tomes, *History*

Gerdi Weidner, *Psychology*

Barbara Weinstein, *History*

Kathleen Wilson, *History*

Judith Wishnia, *Social Sciences Interdisciplinary*

Patricia Wright, *Anthropology*

Department of Theatre Arts

Chairperson: John Lutterbie

Director of Undergraduate Studies: Loyce Arthur

Faculty

Loyce Arthur, *Associate Professor, M.F.A., New York University*: Costume design; folklore.

John Cameron, *Associate Professor, Ph.D., Kent State University*: Acting; directing; American theatre.

Theresa Kim, *Assistant Professor, Ph.D., New York University*: Acting; Asian drama.

Jonathan Levy, *Distinguished Teaching Professor, Ph.D., Columbia University*: Criticism; playwriting. Recipient of the State University Chancellor's Award for Excellence in Teaching, 1991, and the President's Award for



Excellence in Teaching, 1991.

John Lutterbie, *Associate Professor and Graduate Studies Director, Ph.D., University of Washington*: Theory; history; criticism.

Deborah Mayo, *Instructor, M.F.A., Yale University*: Acting; youth theatre.

Thomas Neumiller, *Professor Emeritus, M.F.A., Yale University*: Acting; directing. Recipient of the State University Chancellor's Award for Excellence in Teaching, 1993, and the President's Award for Excellence in Teaching, 1993.

Norman Prusslin, *Adjunct Instructor, B.A., State University of New York at Stony Brook*: Radio broadcasting; media leadership.

David Saltz, *Assistant Professor, Ph.D., Stanford University*: Multimedia; theory; criticism.

Amy Sullivan, *Associate Professor, M.F.A., University of North Carolina at Greensboro*: Modern dance with emphasis on performance and choreography.

Department of Sociology

Chairperson: Andrea Tyree

Director of Undergraduate Studies: Frank Romo

Faculty

Said Amir Arjomand, *Professor, Ph.D., University of Chicago*: Comparative; historical; political; religion.

Diane Barthel, *Professor, Ph.D., Harvard University*: Culture; sex roles; historical. Recipient of the State University Chancellor's Award for Excellence in Teaching, 1989, and the President's Award for Excellence in Teaching, 1989.

Ivan D. Chase, *Associate Professor, Ph.D., Harvard University*: Social inequality; social

structure; resource allocation; cross-species comparisons.

Stephen Cole, *Professor, Ph.D., Columbia University*: Science; theory; culture. Recipient of the State University Chancellor's Award for Excellence in Teaching, 1992, and the President's Award for Excellence in Teaching, 1992.

O. Andrew Colver, *Associate Professor, Ph.D., University of California, Berkeley*: Complex organizations; demography; ecology.

Kenneth A. Feldman, *Professor, Ph.D., University of Michigan*: Social psychology; higher education; socialization.

John H. Gagnon, *Professor, Ph.D., University of Chicago*: Deviance; family simulations; sexual conduct; social change.

Erich Goode, *Distinguished Teaching Professor, Ph.D., Columbia University*: Deviance; criminology.

Norman Goodman, *Distinguished Teaching Professor and Distinguished Service Professor, Ph.D., New York University*: Social psychology; family; socialization. Recipient of the State University Chancellor's Award for Excellence in Teaching, 1976.

Morton Hunt, *Adjunct Professor, B.A., Temple University*: Social science writing; sexuality; marriage and family life; methodology.

Nilufer Isvan, *Assistant Professor, Ph.D., University of Michigan*: Rural sociology; gender; comparative; social change.

Michael Kimmel, *Professor, Ph.D., University of California, Berkeley*: Comparative and historical development; social movements; gender and sexuality.

Hermann Kurthen, *Visiting Assistant Professor, Ph.D., Freie Universitat Berlin*: International migration; national identity.

Mark H. Lazerson, *Assistant Professor, J.D., Ph.D., New York University*: Economic; industrial; law; organizations.

Frank Romo, *Associate Professor, Ph.D., Yale University*: Statistics; methodology; social organizations; economic.

Ian Roxborough, *Professor, Ph.D., University of Wisconsin-Madison*: Joint Appointment with History; Comparative social structures; development; Latin American politics; social change; Latin American labor movements.

James B. Rule, *Professor, Ph.D., Harvard University*: Theory; political sociology; technology.

Michael Schwartz, *Professor, Ph.D., Harvard University*: Methodology; historical; political economy; business structure; social movements. Recipient of the State University Chancellor's Award for Excellence in Teaching, 1975.

Judith Tanur, *Distinguished Teaching Professor, Ph.D., State University of New York at Stony Brook*: Statistics; methodology; social psychology. Recipient of the State University Chancellor's Award for Excellence in Teaching, 1990, and the President's Award for Excellence in Teaching, 1990.

Andrea Tyree, *Professor, Ph.D., University of Chicago*: Demography; social stratification; statistics; ethnicity.

Robert Zussman, *Associate Professor, Ph.D., Columbia University*: Work; medical; political.

Affiliated Faculty

Richard Howard, *Philosophy*

Joseph Schwartz, *Psychiatry*

H. Barry Waldman, *Dental Health*

Departments of

Applied Mathematics and Statistics

Chairperson: James Glimm

Undergraduate Program Director: Alan C. Tucker

Faculty

Hongshik Ahn, *Assistant Professor, Ph.D., University of Wisconsin*. Biostatistics, survival analysis.

Esther Arkin, *Associate Professor, Ph.D., Stanford University*: Computational geometry; combinatorial optimization.

Edward J. Beltrami, *Professor, Ph.D., Adelphi University*: Optimization; stochastic models.

Yung Ming Chen, *Professor, Ph.D., New York*



University: Partial differential equations; inverse problems.

Yuefan Deng, *Associate Professor, Ph.D., Columbia University*: Computational fluid dynamics; parallel computing.

Vaclav Dolezal, *Professor Emeritus, Sc.D., Czechoslovak Academy of Science*: Distribution theory; systems theory.

Pradeep Dubey, *Professor, Ph.D., Cornell University*: Game theory; mathematical economics. Member, Institute for Decision Sciences.

Stephen Finch, *Associate Professor, Ph.D., Princeton University*: Applied statistics.

Robert Frey, *Adjunct Assistant Professor, Ph.D., State University of New York at Stony Brook*: Operations research.

James Glimm, *Distinguished Professor, Ph.D., Columbia University*: Mathematical physics; nonlinear physics.

Sheldon Gordon, *Adjunct Professor, Ph.D., McGill University*: Mathematics education.

John Grove, *Associate Professor, Ph.D., Ohio State University*: Conservation laws; computational fluid dynamics.

Woo Jong Kim, *Professor, Ph.D., Carnegie Mellon University*: Ordinary differential equations.

Brent Lindquist, *Professor, Ph.D., Cornell University*: Computational fluid dynamics; reservoir modeling.

Nancy Mendell, *Professor, Ph.D., University of North Carolina at Chapel Hill*: Biostatistics; statistical genetics.

Joseph Mitchell, *Associate Professor, Ph.D., Stanford University*: Computational geometry, Recipient of the State University Chancellor's Award for Excellence in Teaching, 1996.

Abraham Neyman, *Professor, Ph.D., Hebrew University*: Game theory; mathematical economics. Member, Institute for Decision Sciences.

Bradley Plohr, *Professor, Ph.D., Princeton University*: Conservation laws; computational fluid dynamics.

David Sharp, *Adjunct Professor, Ph.D., California Institute of Technology*: Mathematical physics.

Matthew J. Sobel, *Professor, Ph.D., Stanford University*: Stochastic models; optimization. Member, Institute for Decision Sciences.

Ram P. Srivastav, *Professor, D.Sc., University of Glasgow; Ph.D., University of Lucknow*: Integral equations; numerical solutions.

Michael Taksar, *Professor, Ph.D., Cornell University*: Stochastic processes.

Reginald P. Tewarson, *Professor, Ph.D., Boston University*: Numerical analysis; biomathematics.

Alan C. Tucker, *Distinguished Teaching Professor, Ph.D., Stanford University*: Combinatorics; applied models. Recipient of the State University Chancellor's Award for Excellence in Teaching, 1974.

Qiang Zhang, *Associate Professor, Ph.D., New York University*: Scientific computing; computational fluid dynamics.

Affiliated Faculty

Hussein Badr, *Computer Science*

Eugene Feinberg, *Harriman School*

David Ferguson, *Technology and Society*

Roger Grimson, *Preventive Medicine*

Steven Skiena, *Computer Science*

Darko Skorin-Kapov, *Harriman School*

Jadranka Skorin-Kapov, *Harriman School*

Judith Tanur, *Sociology*

Frank Webster, *Chemistry*

Armen Zemanian, *Electrical Engineering*

W. Averell Harriman School for Management and Policy

Director: Thomas R. Sexton

Undergraduate Program Director: Carl J. Allocca

Faculty

Carl J. Allocca, *CPA, Lecturer, Long Island University, C.W. Post*: Public and private accounting, auditing, taxation and internal systems development, conversion and review.

Stanley M. Altman, *Ph.D., Polytechnic Institute of Brooklyn*: Health care management and policy; finance.

T. Owen Carroll, *Associate Professor, Ph.D., Cornell University*: Management information



systems; finance. Recipient of the State University Chancellor's Award for Excellence in Teaching, 1974.

Mark Cassano, *Assistant Professor, Ph.D., Yale University*: Financial economics; financial markets; behavioral finance.

Jeff T. Casey, *Associate Professor, Ph.D., University of Wisconsin, Madison*: Organizational behavior; decision making.

Subimal Chatterjee, *Assistant Professor, Ph.D., University of Pittsburgh*: Marketing; consumer behavior, marketing research.

Eugene A. Feinberg, *Professor, Ph.D., Vilnius University*: Operations management; operations research.

Kathy A. Paulson-Gjerde, *Assistant Professor, Ph.D., Purdue University*: Labor economics; industrial organization; total quality management; econometrics.

Thomas J. Gjerde, *Assistant Professor, Ph.D., Purdue University*: Labor economics; econometrics; macro-monetary economics.

Manuel London, *Professor and Director of Labor Management Studies Program, Ph.D., Ohio University*: Personnel; promotion policies; management training; assessment centers.

Anne Preston, *Associate Professor, Ph.D., Harvard University*: Labor economics; nonprofit organizations.

Thomas R. Sexton, *Associate Professor, Ph.D., State University of New York at Stony Brook*: Operations research; statistics; health care management; productivity analysis.

Jadranka Skorin-Kapov, *Associate Professor, Ph.D., University of British Columbia*: Management science; mathematical programming with applications; artificial intelligence.

Susan A. Slotnick, *Assistant Professor, Ph.D., Carnegie-Mellon University*: Operations management; management information systems; applications of expert systems to manufacturing operations.

Matthew J. Sobel, *Professor, Ph.D., Stanford University*: Operations management.

Harry Weiner, *Associate Professor, S.M., Massachusetts Institute of Technology*: Redesign of organizational structure to improve programmatic capabilities.

Gerrit Wolf, *Professor, Ph.D., Cornell University*: Decision and organizational behavior.

Affiliated Faculty

Donald P. Harrington, *Radiology*

Lee E. Koppelman, *Political Science*

Alan Leiken, *Health Technology and Management*

Lorna McBarnette, *Health Technology and Management*

Robert Nathans, *Physics*

Mark Schneider, *Political Science*

John T. Scholz, *Political Science*

Michael Taksar, *Applied Mathematics and Statistics*

Paul E. Teske, *Political Science*

Department of Computer Science

Chairperson: David S. Warren

Undergraduate Program Director: Peter B. Henderson

Faculty

Leo Bachmair, *Associate Professor, Ph.D., University of Illinois at Urbana-Champaign*: Computational logic; automated deduction; symbolic computation.



Hussein G. Badr, *Associate Professor, Ph.D., Pennsylvania State University*: Computer communication networks and protocols; stochastic processes and queuing theory; simulation; performance evaluation, modeling, and analysis.

Arthur J. Bernstein, *Professor, Ph.D., Columbia University*: Distributed algorithms; design and correctness of operating systems; concurrent programming.

Tzi-cker Chiueh, *Assistant Professor, Ph.D., University of California, Berkeley*: Experimental computer systems, computer architecture, database systems, VLSI hardware design/CAD.

Herbert L. Gelernter, *Professor, Ph.D., University of Rochester*: Artificial intelligence; knowledge-based, heuristic problem-solving systems; scientific applications.

Barbara J. Golden, *Lecturer, M.S., Polytechnic Institute of Brooklyn*; *M.S., Adelphi University*: Software development; testing and documentation; software interfaces.

Peter B. Henderson, *Professor, Ph.D., Princeton University*: Software engineering; programming environments; computer science education.

Jieh Hsiang, *Professor, Ph.D., University of Illinois at Urbana-Champaign*: Automated deduction; program correctness; computational logic.

Arie Kaufman, *Professor, Ph.D., Ben-Gurion University, Israel*: Computer graphics; visualization; interactive systems; computer architecture; computer vision.

Michael Kifer, *Associate Professor, Ph.D., Hebrew University of Jerusalem*: Database systems; logic programming; knowledge representation; artificial intelligence.

Ker-I Ko, *Professor, Ph.D., Ohio State University*: Computational complexity; theory of computation; computational learning theory.

Phillip M. Lewis, *Professor, Ph.D., Massachusetts Institute of Technology*:

Computational complexity; automata theory; compiler design; concurrent systems.

Prateek Mishra, *Associate Professor, Ph.D., University of Utah*: Functional programming; type inference; programming language semantics, user interfaces, computer applications.

Theo Pavlidis, *Professor, Ph.D., University of California, Berkeley*: Image analysis; document processing including OCR; computer graphics.

I.V. Ramakrishnan, *Professor, Ph.D., University of Texas at Austin*: Declarative programming; rewrite systems.

Steven Skiena, *Professor, Ph.D., University of Illinois at Urbana-Champaign*: Computational geometry; algorithms; discrete mathematics.

David R. Smith, *Professor, Ph.D., University of Wisconsin*: Hardware description languages and synthesis; VLSI design tools, experimental chip architecture.

Scott A. Smolka, *Professor, Ph.D., Brown University*: Semantics of concurrency; design of distributed languages and algorithms; visual environments for concurrent systems.

Eugene W. Stark, *Associate Professor, Ph.D., Massachusetts Institute of Technology*: Programming language semantics; theory of concurrency; formal specifications; verification; distributed algorithms.

Amitabh Varshney, *Assistant Professor, Ph.D., University of North Carolina at Chapel Hill*: Interactive 3D computer graphics; scientific visualization; parallel graphics algorithms; geometric modeling; computational geometry.

David S. Warren, *Professor, University of Michigan*: Logic programming; database systems; interactive systems; artificial intelligence; natural language and logic.

Anita Wasilewska, *Associate Professor, Ph.D., University of Warsaw*: Knowledge representation; artificial intelligence.

Larry D. Wittie, *Professor, Ph.D., University of Wisconsin*: Distributed shared memory architectures; distributed operating systems; massively parallel scientific algorithms; computer networks and interconnection topologies, computer architecture, neural networks.

Affiliated Faculty

Esther Arkin, *Applied Mathematics and Statistics*

Joseph Mitchell, *Applied Mathematics and Statistics*

Department of

Electrical Engineering

Chairperson: Serge Luryi

Undergraduate Program Director: Petar M. Djuric

Faculty

Bradley Carlson, *Assistant Professor, Ph.D., Syracuse University*: VLSI; circuit design, parallel and distributed computing.

Chi-Tsong Chen, *Professor, Ph.D., University of California, Berkeley*: Systems and control theo-



ry; digital signal processing.

Harbans S. Dhadwal, *Associate Professor, Ph.D., University of London*: Fiber-optic sensors, optical signal processing, photon correlation spectroscopy, inverse problems.

Petar M. Djuric, *Associate Professor, Ph.D., University of Rhode Island*: Statistical signal processing; time-series analysis; systems modeling.

Mikhail N. Dorojevets, *Assistant Professor, Ph.D., Russian Academy of Sciences, Novosibirsk*: Parallel computer architecture; high-performance systems design.

Vera Gorfinkel, *Associate Professor, Ph.D., A.F. Joffe Physical-Technical Institute, St. Petersburg, Russia*: Semiconductor devices, including microwave and optoelectronics.

Ridha Kamoua, *Assistant Professor, Ph.D., University of Michigan*: Solid-state devices and circuits; microwave devices and integrated circuits.

Serge Luryi, *Professor, Ph.D., University of Toronto*: High speed solid-state electronic and photonic devices, semiconductor physics and technology.

Velio A. Marsocci, *Distinguished Service Professor, Eng.Sc.D., New York University*: Solid-state electronics; integrated electronics; biomedical engineering.

John Murray, *Associate Professor, Ph.D., University of Notre Dame*: Signal processing; systems theory.

Jayantkumar P. Parekh, *Professor, Ph.D., Polytechnic Institute of Brooklyn*: Microwave acoustics; microwave magnetics; microwave electronics; microcomputer applications.

Nam Phamdo, *Assistant Professor, Ph.D., University of Maryland at College Park*: Data compression and coding.

Stephen S. Rappaport, *Professor, Ph.D., New York University*: Communication theory; systems theory.

Thomas G. Robertazzi, *Associate Professor, Ph.D., Princeton University*: Computer communications; performance evaluation; parallel processing.

Yacov Shamash, *Professor, Ph.D., Imperial College*: Control systems and robotics.

Kenneth L. Short, *Professor, Ph.D., State University of New York at Stony Brook*: Digital system design; embedded microprocessor systems; instrumentation. Recipient of the State University Chancellor's Award for Excellence in Teaching, 1985, and the President's Award for Excellence in Teaching, 1985.

Muralidhara Subbarao, *Associate Professor, Ph.D., University of Maryland at College Park*: Computer vision; image processing.

Stephen E. Sussman-Fort, *Associate Professor, Ph.D., University of California, Los Angeles*: Electronic circuits, CAD, solid-state electronics, electromagnetics; semiconductor devices.

Wendy K. Tang, *Assistant Professor, Ph.D., University of Rochester*: Parallel and distributed processing; massively parallel systems; computer architecture; neural networks.

Hang-Sheng Tuan, *Professor, Ph.D., Harvard University*: Electromagnetic theory; integrated optics; microwave acoustics.

Armen H. Zemanian, *Professor, Eng.Sc.D., New York University*: Network theory; VLSI modeling.

Affiliated Faculty

Gene R. Gindi, *Radiology*

John H. Marburger, *Physics*

Theo Pavlidis, *Computer Science*

David R. Smith, *Computer Science*

**Program in
Technology and Society**

Director: Thomas T. Liao

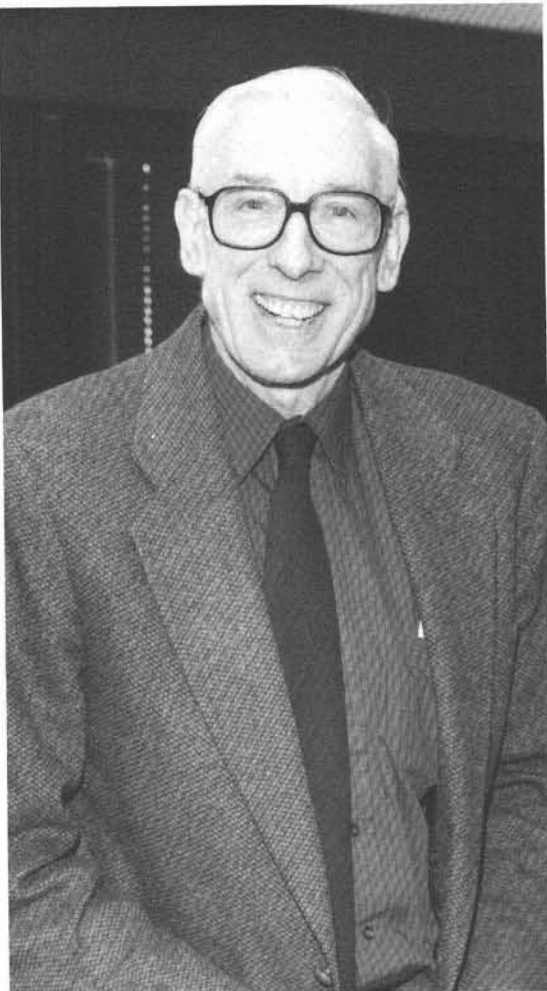
Undergraduate Program Director: Joseph S. Hogan

Faculty

John C. Bierwirth, *Professor, J.D., Columbia University*: Foreign affairs; management; ethics; environment.

Randolph Cope, *Lecturer, M.E.E., Polytechnic University*: Engineering management; electronic systems.

David L. Ferguson, *Professor, Ph.D., University of California, Berkeley*: Quantitative methods; computer applications; intelligent tutoring systems; mathematics and engineering education. Recipient of the State University Chancellor's



Award for Excellence in Teaching, 1992, and the President's Award for Excellence in Teaching, 1992.

Joseph S. Hogan, *Associate Professor, Ph.D., New York University*: Planetary atmospheres; climate change; environmental satellites.

Thomas T. Liao, *Professor, Ed.D., Columbia University*: Science education; educational technology; curriculum development. Recipient of the State University Chancellor's Award for Excellence in Teaching, 1993, and the President's Award for Excellence in Teaching, 1993.

Lester Paldy, *Distinguished Service Professor, M.S., Hofstra University*: Physics; science policy and education.

Sheldon J. Reaven, *Associate Professor, Ph.D., University of California, Berkeley*: Energy-environmental issues; waste management; philosophy of science and technology.

John G. Truxal, *Distinguished Teaching Professor Emeritus, Sc.D., Massachusetts*

Institute of Technology: Technology and society issues; automatic control systems.

Affiliated Faculty

Jacqueline G. Brooks, *Science, Mathematics, and Technology Education*

Department of**Materials Science and Engineering**

Chairperson: Michael Dudley

Undergraduate Program Director: Christopher C. Berndt

Faculty

Christopher C. Berndt, *Professor, Ph.D., Monash University*: Mechanical properties; bio-engineering; biomaterials.

Clive R. Clayton, *Professor, Ph.D., University of Surrey*: Structure and properties of materials; thin film processing.

Michael Dudley, *Professor, Ph.D., University of Warwick*: Synchrotron X-ray topography, defects in single crystals.

Richard J. Gambino, *Professor and Principal Research Scientist, M.S., Polytechnic Institute of New York*: Magnetic thin films; magneto-optical properties.

Allen N. Goland, *Adjunct Professor, Ph.D., Northwestern University*: Solid-state physics.

Gary P. Halada, *Adjunct Assistant Professor, Ph.D., State University of New York at Stony Brook*: Surface analysis; engineering design.

Patrick J. Herley, *Professor, Ph.D., Rhodes University; Ph.D., Imperial College*: Crystallography; chemistry of solids.

Herbert Herman, *Professor, Ph.D., Northwestern University*: Materials engineering; surface engineering; physical metallurgy.

Hugh Isaacs, *Adjunct Professor, Ph.D., Imperial College*: Surface defects; surface analysis.

Franco P. Jona, *Professor, Ph.D., Eidgenossische Technische Hochschule*: Solid-state physics; modern materials.

Alexander H. King, *Professor, D.Phil., University of Oxford*: Electron microscopy; crystal defects.

David J. Larson, Jr., *Research Professor and*



Principal Research Scientist, Ph.D., Northwestern University: Crystal growth, micro-gravity materials science.

Miriam Rafailovich, *Professor, Ph.D., State University of New York at Stony Brook*: Polymer sciences and interfaces.

Sanjay Sampath, *Adjunct Assistant Professor, Ph.D., State University of New York at Stony Brook*: Thermal spray technology; tribology.

Jonathan C. Sokolov, *Associate Professor, Ph.D., State University of New York at Stony Brook*: Polymer sciences and interfaces.

Masaki Suenaga, *Adjunct Professor, Ph.D., University of California, Berkeley*: Superconducting alloys; electron microscopy.

John B. Warren, *Adjunct Assistant Professor, Ph.D., University of Florida*: Analytical electron microscopy, X-ray fluorescence; semiconductor defects.

David O. Welch, *Adjunct Professor, Ph.D., University of Pennsylvania*: Kinetics of diffusion; energetics; crystal lattice defects; radiation effects.

Affiliated Faculty

Benjamin Chu, *Chemistry*

Department of**Mechanical Engineering**

Chairperson: Fu-Pen Chiang

Undergraduate Program Director: Jahangir Rastegar

Faculty

Daniel Bluestein, *Assistant Professor, Ph.D., Tel Aviv University*: Biomedical engineering.

Fu-Pen Chiang, *Professor, Ph.D., University of Florida*: Experimental stress analysis; solid mechanics; optical nondestructive evaluation.

Q. Jeffrey Ge, *Assistant Professor, Ph.D., University of California, Irvine*: Mechanical design; kinematics; robotics; CAD/CAM; computer graphics.

Stewart Harris, *Professor, Ph.D., Northwestern University*: Physics of fluids; environmental engineering.

Peisen S. Huang, *Assistant Professor, Ph.D., University of Michigan: D. Eng, Tohoku University, Japan: Optical measurement; precision engineering.*

Imin Kao, *Assistant Professor, Ph.D., Stanford University: Robotics; control; neural networks; computer integrated manufacturing.*

John Kincaid, *Professor, Ph.D., Rockefeller University: Statistical mechanics; thermodynamics.*

Alan S. Kushner, *Professor, Ph.D., University of Maryland at College Park: Solid and computational mechanics.*

Foluso Ladeinde, *Associate Professor, Ph.D., Cornell University: Fluid mechanics and heat transfer; turbulence; computational fluid dynamics.*

Jon P. Longtin, *Assistant Professor, Ph.D., University of California at Berkeley: Heat transfer; radiation interactions with materials; optical measurements.*

Toshio Nakamura, *Associate Professor, Ph.D., Brown University: Solid mechanics; computational fracture mechanics.*

Edward E. O'Brien, *Professor, Ph.D., The Johns Hopkins University: Fluid mechanics; chemically reactive flows; turbulence.*

Vishwanath Prasad, *Professor, Ph.D., University of Delaware: Heat transfer; transport processes.*

Jahangir Rastegar, *Associate Professor, Ph.D., Stanford University: Kinematics; dynamics; vibration control of high performance machinery; optimal design of mechanical systems.*

James Tasi, *Professor, Ph.D., Columbia University: Mechanics of solids.*

Lin-Shu Wang, *Associate Professor, Ph.D., University of California, Berkeley: Thermodynamics.*

Affiliated Faculty

Robert D. Cess, *Marine Sciences Research Center*

Clinton Rubin, *Orthopaedics*

George Stell, *Chemistry*

Programs of the Marine Science Research Center

Dean and Director: J. Kirk Cochran

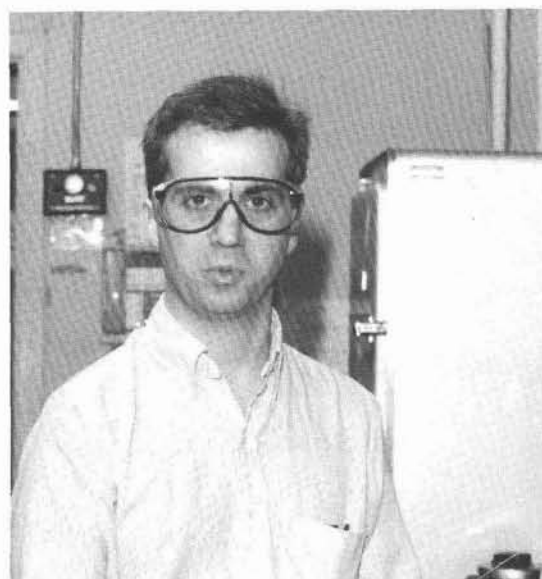
Director of Undergraduate Studies: Robert M. Cerrato

Faculty

Josephine Y. Aller, *Research Associate Professor, Ph.D., University of Southern California: Marine benthic ecology; invertebrate zoology; marine microbiology; biogeochemistry.*

Robert C. Aller, *Professor, Ph.D., Yale University: Marine geochemistry; marine animal-sediment relations.*

Henry J. Bokuniewicz, *Professor and Associate Dean for Education, Ph.D., Yale University: Near-shore transport processes; coastal sedimentation; marine geophysics.*



Malcolm J. Bowman, *Professor, Ph.D., University of Saskatchewan: Oceanography of coastal waters; water quality modeling; microstructure and turbulence.*

Vincent T. Breslin, *Assistant Professor, Ph.D., Florida Institute of Technology: Metal leachability from combustion residues; trace metal geochemistry.*

Bruce J. Brownawell, *Associate Professor, Ph.D., Massachusetts Institute of Technology: Biogeochemistry of organic pollutants in seawater and groundwater.*



Edward J. Carpenter, *Professor, Ph.D., North Carolina State University: Nitrogen cycling; phytoplankton ecology.*

Robert M. Cerrato, *Associate Professor, Ph.D., Yale University: Benthic ecology; population and community dynamics.*

Robert D. Cess, *Distinguished Professor, Ph.D., University of Pittsburgh: Radiative transfer and climate modeling; greenhouse effect; nuclear winter theory; atmospheric structures of Mars, Saturn, and Jupiter.*

Andre Y. Chistoserdov, *Assistant Professor, Ph.D., Institute of Genetics and Selection of Industrial Organisms: Marine microbiology; marine biotechnology and bioremediation.*

J. Kirk Cochran, *Professor and Dean and Director, Ph.D., Yale University: Marine geochemistry; use of radionuclides as geochemical tracers; diagenesis of marine sediments.*

Daniel C. Conley, *Assistant Professor, Ph.D., University of California, San Diego: Sediment transport; wave boundary layers; near-shore processes.*

David O. Conover, *Professor and Associate Dean for Research, Ph.D., University of Massachusetts-Amherst: Ecology of fishes; fishery biology.*

Elizabeth M. Cospser, *Research Associate Professor, Ph.D., City University of New York: Phytoplankton physiology and ecology; resistance of microalgae to pollutants.*

Frank J. Roethel, *Lecturer, Ph.D., State University of New York at Stony Brook: Environmental chemistry; behavior of coal waste in the environment; solution chemistry.*

Sergio A. Sanudo-Wilhelmy, *Assistant Professor, Ph.D., University of California, Santa Cruz: Chemical oceanography; coastal geochemistry; metal cycling in aquatic systems.*

J. R. Schubel, *Professor Emeritus, Ph.D., The Johns Hopkins University: Coastal sedimentation; suspended sediment transport; coastal zone management.*

Mary I. Scranton, *Professor, Ph.D., Massachusetts Institute of Technology: Marine geochemistry; biological-chemical interactions in seawater.*

Gordon Taylor, *Assistant Professor, Ph.D., University of Southern California: Marine microbiology; microbial ecology; plankton trophodynamics; marine biofouling.*

Prasad Varanasi, *Professor, Ph.D., University of California, San Diego: Planetary spectroscopy.*

Duane E. Waliser, *Assistant Professor, Ph.D., University of California, San Diego: Atmospheric dynamics; climate modeling.*

Dong Ping Wang, *Professor, Ph.D., University of Miami: Coastal ocean dynamics.*

Peter K. Weyl, *Professor Emeritus, Ph.D., University of Chicago: Coastal zone planning; physical oceanography.*

Robert E. Wilson, *Associate Professor, Ph.D., The Johns Hopkins University: Estuarine and coastal ocean dynamics.*



Peter M.J. Woodhead, *Research Professor, B.S., University of Durham*: Behavior and physiology of fish; coral reef ecology; ocean energy conversion systems.

Charles F. Wurster, *Associate Professor Emeritus, Ph.D., Stanford University*: Effects of chlorinated hydrocarbons on phytoplankton communities.

Jeannette Yen, *Associate Professor, Ph.D., University of Washington*: Marine zooplankton ecology.

Minghua Zhang, *Assistant Professor, Ph.D., Academia Sinica*: Atmospheric dynamics; climate modeling.

Affiliated Faculty

Robert L. deZafra, *Physics*

William H. Greene, *Medicine*

Herbert Herman, *Materials Science and Engineering*

Lee E. Koppelman, *Political Science*

Robert K. Cowen, *Professor, Ph.D., University of California, San Diego*: Fishery oceanography; near-shore fish populations; fish ecology.

Nicholas S. Fisher, *Professor, Ph.D., State University of New York at Stony Brook*: Marine phytoplankton physiology and ecology; biogeochemistry of metals; marine pollution.

Roger D. Flood, *Associate Professor, Ph.D., Massachusetts Institute of Technology*: Marine geology; sediment dynamics; continental margin sedimentation.

Jane Lee Fox, *Professor, Ph.D., Harvard University*: Planetary upper atmospheres.

Marvin A. Geller, *Professor and Director of Institute for Terrestrial and Planetary Atmospheres, Ph.D., Massachusetts Institute of Technology*: Atmospheric dynamics; stratosphere dynamics; ozone behavior.

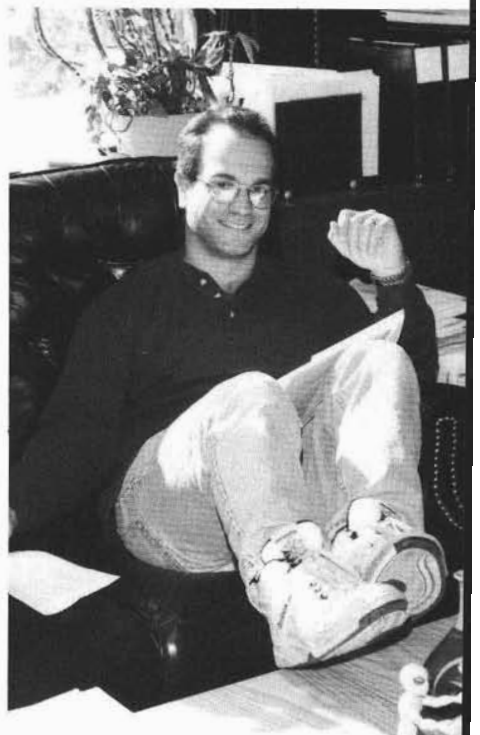
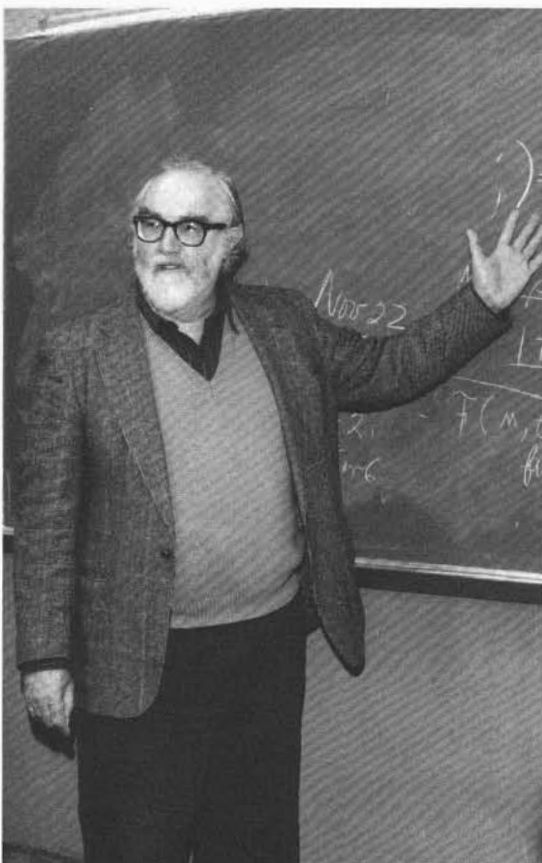
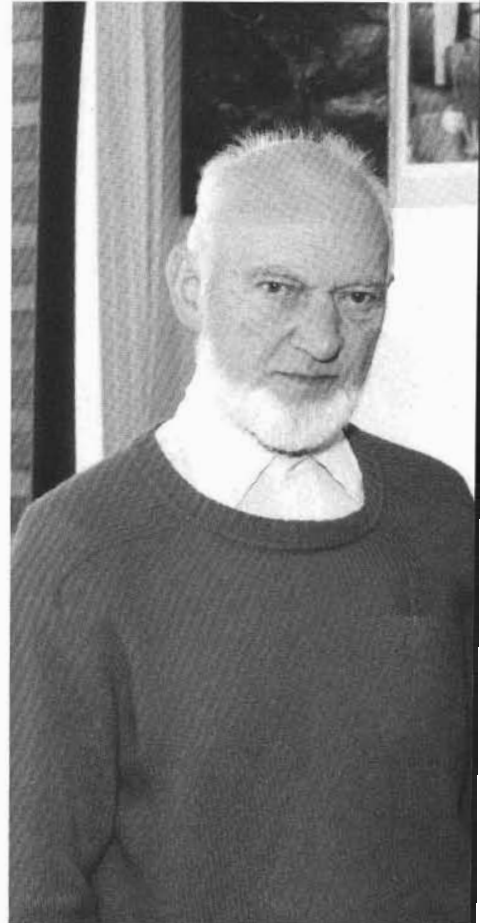
Valrie A. Gerard, *Associate Professor, Ph.D., University of California, Santa Cruz*: Marine macrophyte ecology and physiology.

Sultan Hameed, *Professor and Coordinator of Atmospheric Sciences Program, Ph.D., University of Manchester*: Climate change.

Cindy Lee, *Professor, Ph.D., University of California, San Diego*: Marine geochemistry of organic compounds; organic and inorganic nitrogen cycle biochemistry.

Darcy J. Lonsdale, *Associate Professor, Ph.D., University of Maryland at College Park*: Zooplankton ecology with special interest in physiology; life history studies.

Glenn R. Lopez, *Professor, Ph.D., State University of New York at Stony Brook*: Benthic ecology; animal-sediment interactions.



Kamazima Lwiza, Assistant Professor, Ph.D., University College of North Wales: Coastal ocean circulation; tides and tidal fronts; mixing.

James E. Mackin, Associate Professor, Ph.D., University of Chicago: Geochemistry of suspended sediment/solution interactions.

John L. McHugh, Professor Emeritus, Ph.D., University of California, Los Angeles: Fishery management; fishery oceanography; whales and whaling.

Steven G. Morgan, Assistant Professor, Ph.D., University of Maryland at College Park: Marine ecology.

Charles Nittrouer, Professor, Ph.D., University of Washington: Geological oceanography, continental margin sedimentation.

Donald W. Pritchard, Professor Emeritus, Ph.D., University of California, San Diego: Estuarine and coastal dynamics; coastal zone management.

