





# *the specula staff*

**Coordinating Editor . . . George May**

**Senior Editor . . . Marylou Lionells**

Mel Morris  
George May  
Carol Berggren

**Junior Editor . . . Mary Fedoroff**

Ann Meilinger  
Hank Liers  
Pat Glenn  
Judy Stout  
Carol Okvist  
Judy Patchell  
Ginny Nelson

**Sophomore Editor . . . Barbara Englert**

Barbara Else  
Barbara Kozakiewicz  
Jeanne McDonald  
Joel Panagakos  
Betty Egan  
Gerry Goldstein  
Lee Ann Harris  
Mathilda Haefele  
Lynne DaSilva

**Freshman Editor . . . Pat Mucciolo**

Judy Slecta  
Valerie Furst  
Lynn Geed  
Sylvia Schanz  
Ray Meyer  
Barbara Taylor  
Arlene Levy  
Monica Findeis  
Frances Luciano

**Layout Editor . . . George May**

Marylou Lionells  
Tod Fowler  
Vivian Meksin

**Photographer . . . Bruce Gallagher**

**Faculty Advisor . . . Dr. Thomas Rogers**

# specula

1957 1961



*STATE UNIVER  
LONG ISLA*



*UNIVERSITY OF NEW YORK*  
*AND CENTER*

*Oyster Bay*  
*New York*



*John F. Kennedy*

## *Allen Austill, Dean of Students*

*H*e has listened to our problems, guided our decisions, shouldered our burdens and furthered our objectives . . . . He has argued with us, cautioned us, encouraged us and consoled us . . . . He has answered our questions and listened to our criticisms . . . . He has taken a personal interest in every activity and organization . . . . He has helped each of us as individuals as well as worked with the class as a whole . . . . He has been our Father Zossima, our Socrates and our Santa Claus . . . . He has been our opponent, our protector, our champion and our friend . . . .

To him, the Class of 1961 dedicates this edition of  
the specula

*“Let Each Become*





## *All He Is Capable of Being” . . . .*

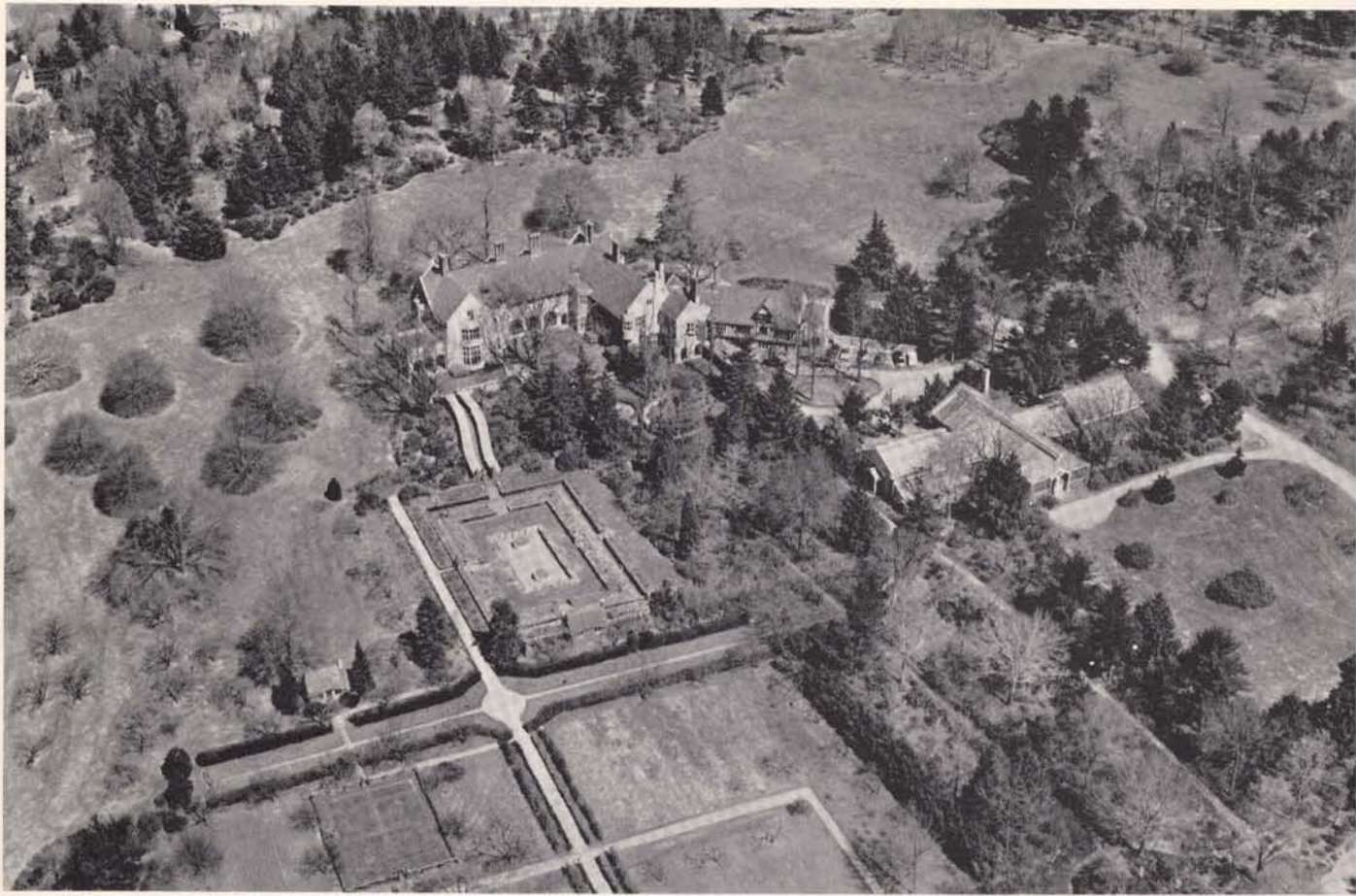
**T**he educated man . . . . equipped with that knowledge and those arts of thought and communication which make him an effective inquirer, an enlightened citizen, a civilized human being . . . . no mere slave to technology he . . . . capable of original thinking, flexible adaptation, critical analysis . . . . able to lead others to deeper understanding . . . . to broader competence . . . . to a deeper sensitivity to values.

Achieved through visualization of knowledge as a whole . . . . each thing known only in relation to something else . . . . shared emphasis on the sciences, the humanities and the social sciences . . . . science to provide for individual competence in a special field and for broader knowledge of the natural world . . . . scientific inquiry, attitude, methods and ends . . . . humanities for the development of the arts of communication and thought . . . . the study of man as a creative being . . . . the social sciences to promote understanding of man's relationship to other men, to society and its institutions . . . . to effect the realization of the place of the individual in the existing social order.

A program both traditional and experimental . . . . emphasizing the liberal arts as fundamental while providing for continual re-examination of methods and aims by both faculty and students . . . . a program involving heavy demands on teacher and student in the general as well as in the special areas . . . . founded in the belief that education must be challenging if it is to be fruitful.







*Faint, illegible text, possibly bleed-through from the reverse side of the page.*





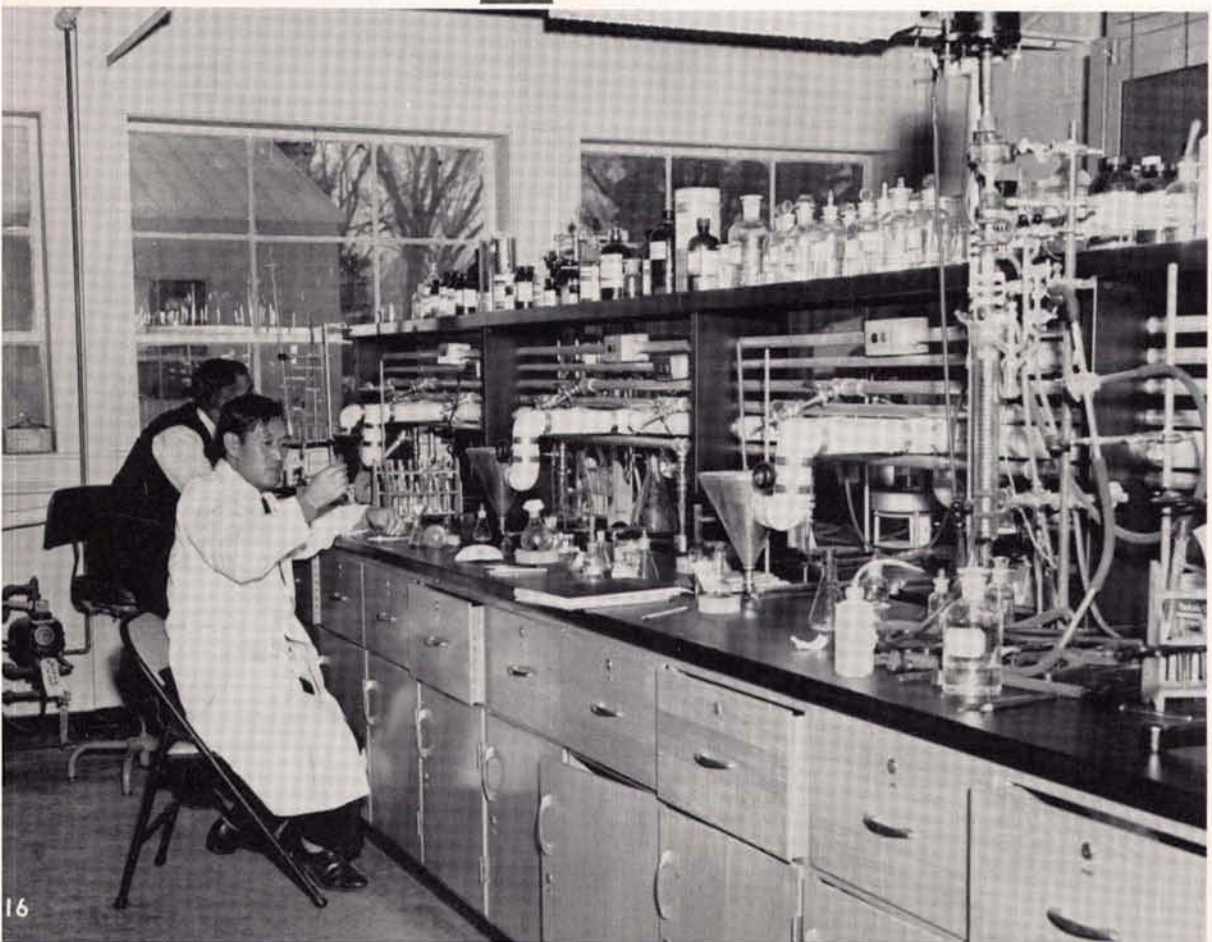


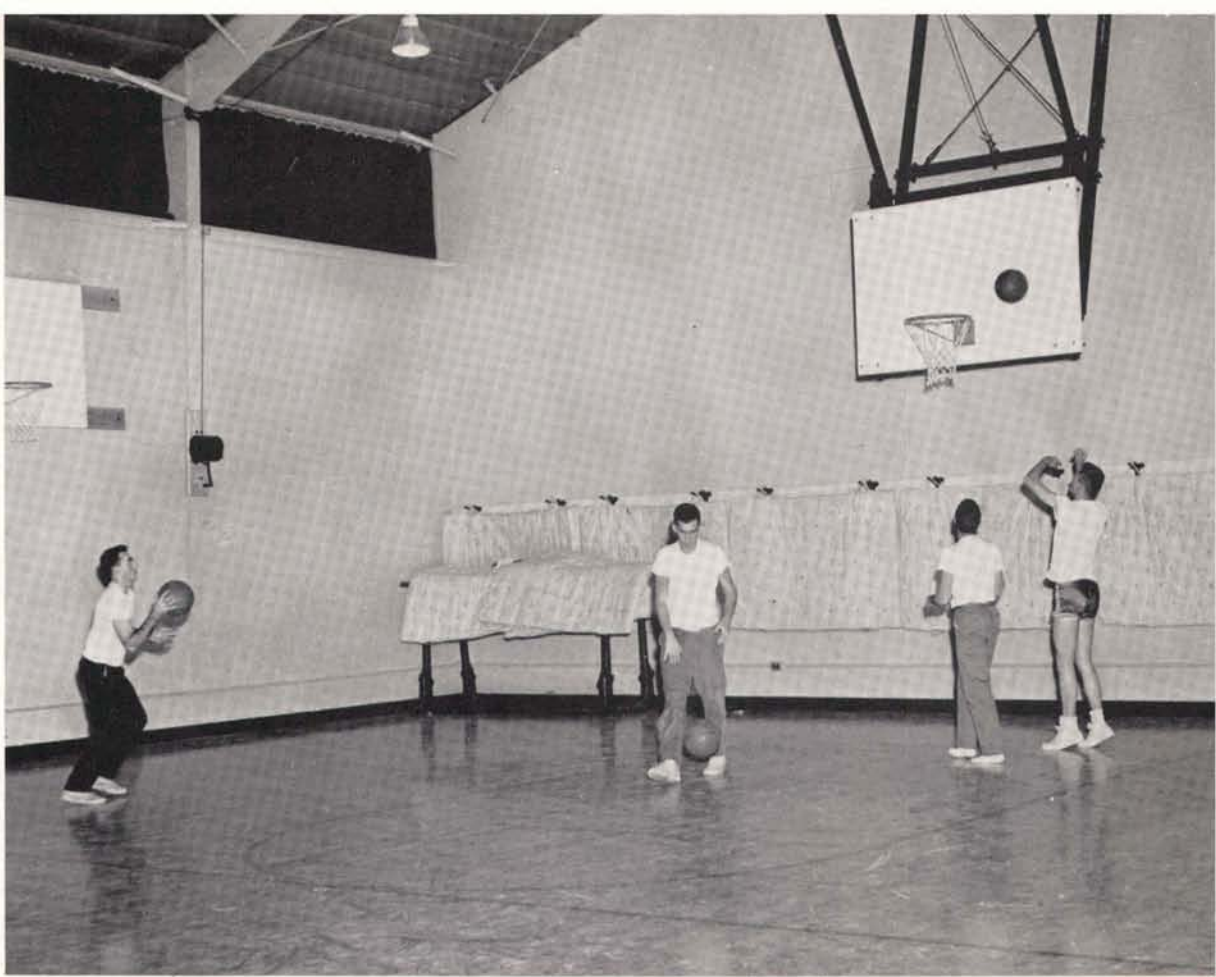


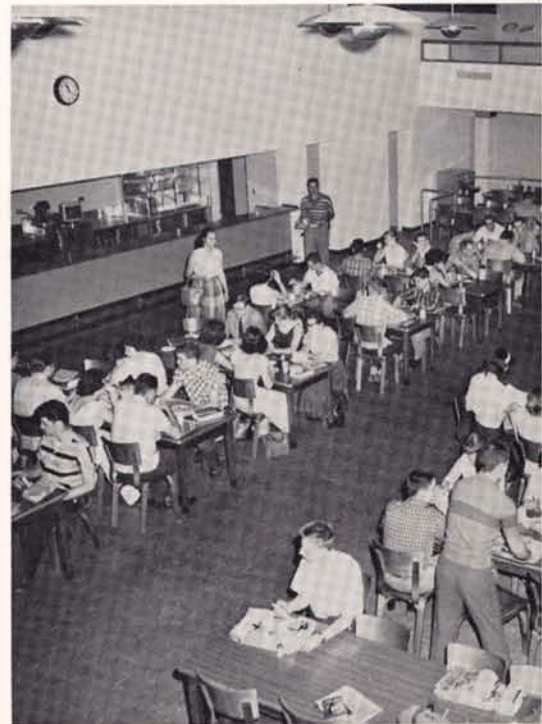
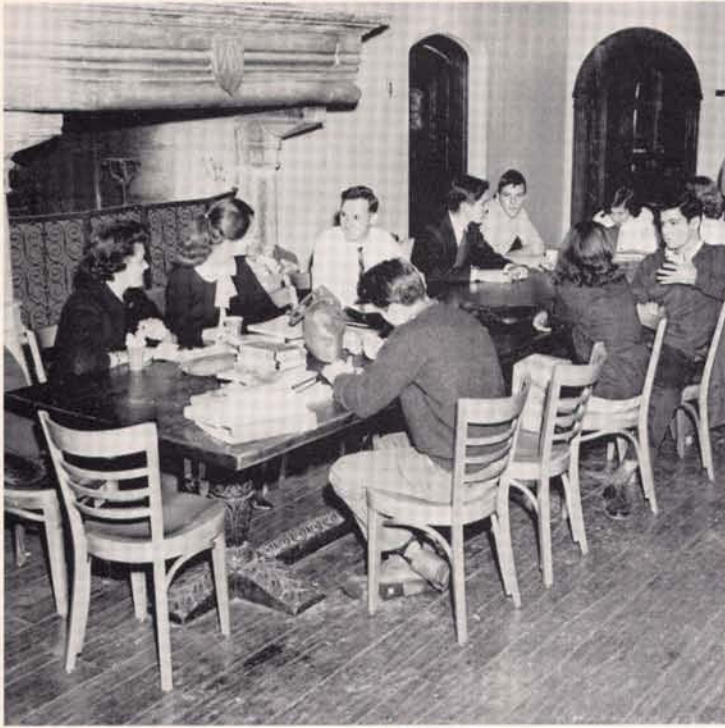
















*epilogue*

**W**illiam Robertson Coe . . . . . born in England in 1869 and raised in Philadelphia . . . . . became an office boy for Johnson and Higgins at 14 . . . . . rose to be president of the firm of marine insurance average adjusters and brokers in 1910 . . . . . chairman of the board from 1916 to 1943 . . . . . wrote **General Average in the United States**, an authoritative work in the field even today . . . . . first marriage to Jeanie Falligant ended with her death in 1898 . . . . . married again in 1900 to Mai Rogers, daughter of Standard Oil's H. H. Rogers . . . . . she left Mr. Coe and their four children a considerable fortune and the Virginia Railroad when she died in 1924 . . . . . married Caroline Slaughter two years later.

William R. Coe





An intense interest in the pioneering West led him to purchase the 200,000 acre ranch of Buffalo Bill in Cody, Wyoming in 1910 . . . went on to collect 8,000 histories and diaries of the old West, valued at over 3,000,000 dollars . . . later donated this collection to Yale . . . his interest in the study of American History is continued through the American Studies program of the Coe Foundation today . . . received honorary degrees from Yale and the University of Wyoming . . . and Norway's highest honor, the Cross of St. Olaf . . . Yale and the University of Wyoming received generous contributions for new programs in American History . . . in addition to his home in Wyoming, he owned the Cherokee Plantation in South Carolina, a duplex in Manhattan, a Florida estate, once used by the Duke and Duchess of Windsor and by Barbara Hutton (for one of her honeymoons) . . . and a garden showplace on northern Long Island, destined to become the temporary campus for a State supported science and engineering college two years after Mr. Coe's death in 1955.



Mr. Coe at the races.



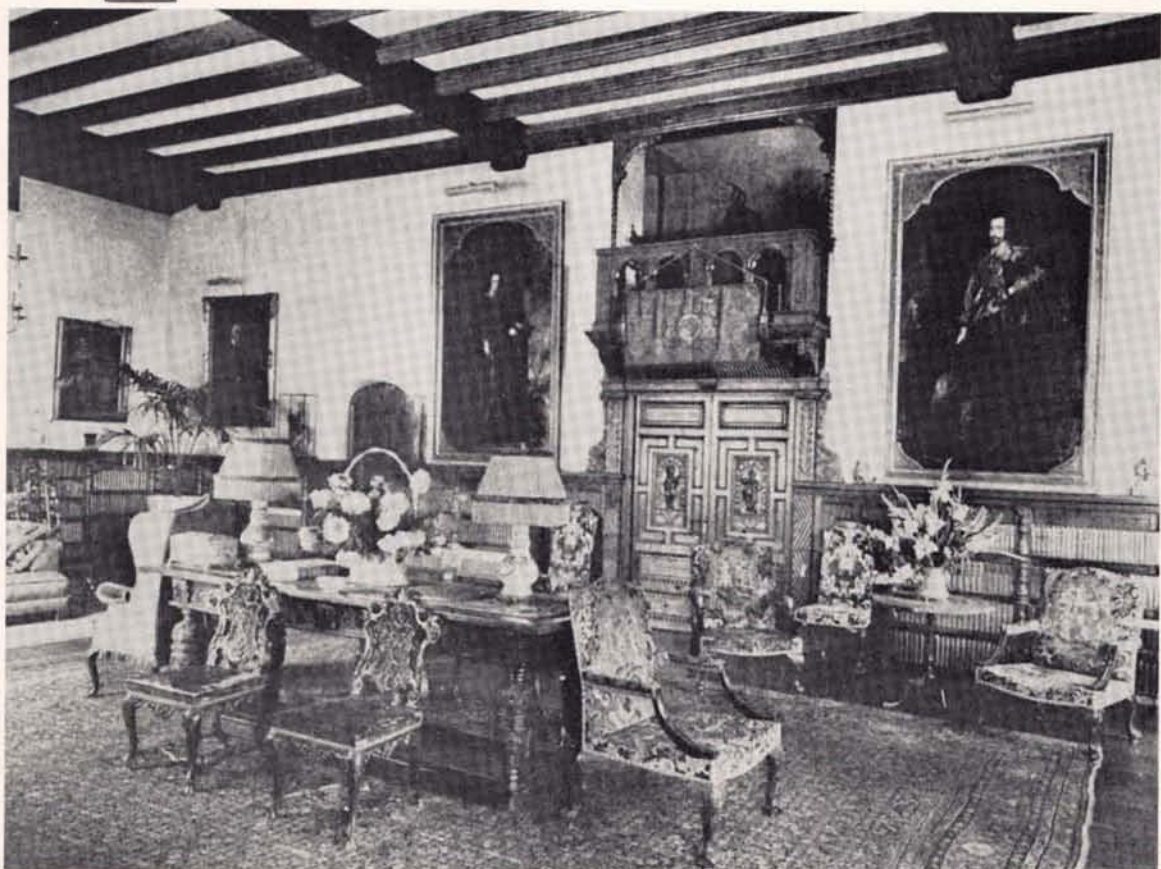
Mr. and Mrs. Coe



Planting Fields' . . . named by the Indians and early settlers of Oyster Bay and first used for corn planting . . . purchased in 1913 from Mrs. Helen Byrne . . . 350 acres added through other purchases . . . unlandscaped except for part of the front lawn . . . wooden tennis courts laid at the present site of the Blue Pool (Italian Gardens).

A pine stand is set up near the main gate, the small trees purchased from New York State in 1915 . . . the Blue Pool is built . . . Japanese cherry and crabapple trees are imported from Yokohama . . . several thousand rhododendrons from England . . . an avenue of English beech trees is planted . . . a greenhouse is constructed for camellia collection.

Great  
Hall



The original house burns to the ground in 1918 . . . several farmhouses and a stable burn down later . . . Coe Hall finished and occupied in 1921 . . . Mr. Coe had wanted Tudor architecture . . . several photographs of famous English homes submitted . . . Moyans Park in Middlesex the model for the north side . . . Applepton Syndeham, the southern exposure . . . cost of construction over one million dollars . . . the house built of Indiana limestone (obtained in a yard in Astoria) . . . accommodations for a family of six and 30 servants . . . an international controversy arises in 1921 over the purchase of eighteenth century gates, ironwork that the English are reluctant to lose . . . the main road is rerouted and a stone wall is built to accommodate the gates . . . Nassau County moves Chicken Valley Road 90 feet at Mr. Coe's expense . . . landscaping continues . . . the heather garden (fish pond) is laid out . . . dogwoods, magnolias, azaleas, lilacs, oaks and exotic plants from all over the world are planted . . . a large tree is brought down by barge from Massachusetts because it is a family favorite . . . three weeks are spent bringing it up from town to be planted outside Mrs. Coe's room . . . the Coes spend late spring and Christmas at Planting Fields each year.

Mr. Coe presents the grounds and building to New York State in 1948 for use as a school of horticulture after his death . . . several acres and a white farm house (later to become Dean Leonard Olsen's residence) are reserved for Mrs. Coe . . . after Mr. Coe's death, the estate is unused by the family until 1957 when a large white house is built by Mrs. Coe . . . the Agricultural Institute of Farmingdale begins caring for the grounds . . . new plans already brewing in Albany for temporary use of the estate.



Library

February, 1956 . . . . The Board of Trustees of State University makes a much awaited recommendation to the Board of Regents . . . . a State supported and operated college and graduate school on Long Island for the education of young men and women in the sciences, mathematics and engineering . . . . March . . . . The Board of Regents moves on the teacher training portion of the recommendation . . . . October . . . . studies and surveys are completed . . . . the college to be permanently located on property in Stony Brook, donated by Ward Melville . . . . with temporary quarters on the Planting Fields Estate in Oyster Bay . . . . February, 1957 . . . . temporary name chosen . . . . State University College on Long Island.

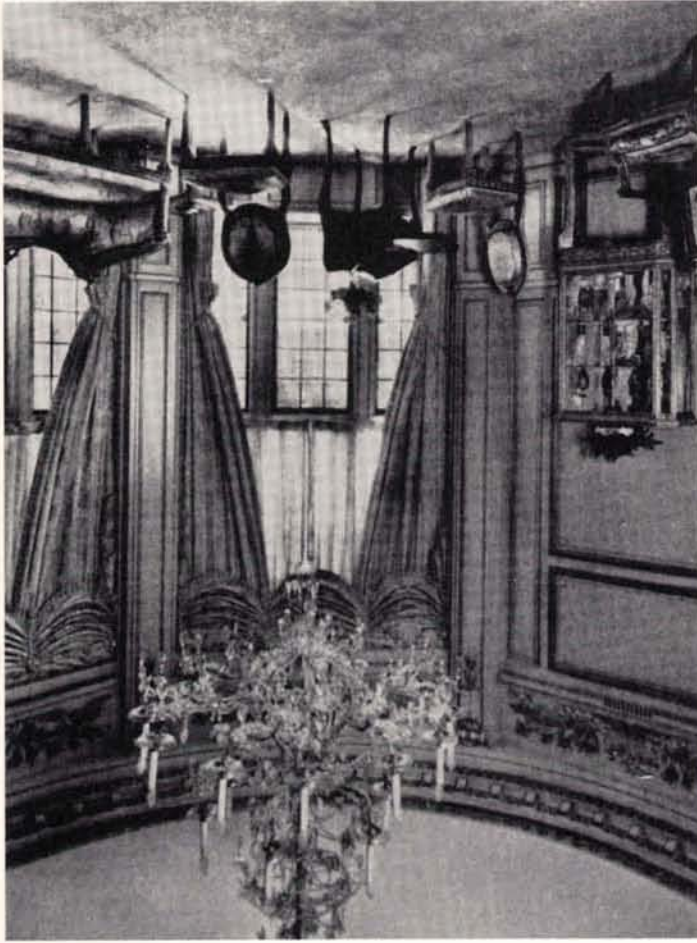


Stairs



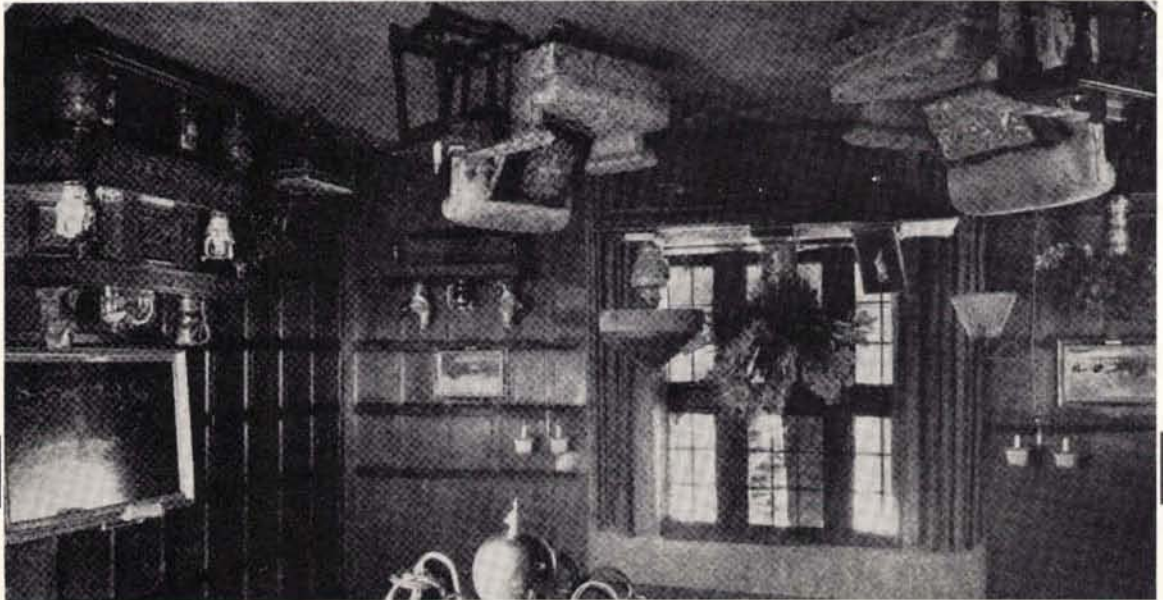
Coffee Shop

Dean Austill's Office



Leonard K. Olsen appointed Dean  
 . . . . . opening date planned for  
 September, 1957 . . . . . author-  
 zation of B.S. degree requested  
 . . . . . April . . . . . Dean Olsen moves  
 into his office in Coe Hall . . . . .  
 no heat, telephone or furniture  
 . . . . . Frank Conway appointed  
 Senior Financial Secretary . . . . .  
 first faculty hired (from Columbia,  
 Oxford, Rochester, Yale and the  
 University of Chicago among  
 others) . . . . . intense publicity be-  
 gins through city and local news-  
 paper articles and campus photo-  
 graphs . . . . . May . . . . . Allen Austill  
 appointed Dean of Students . . . . .  
 first members of the class of 1961  
 admitted . . . . . June-August . . . . .  
 Planting Fields undergoes the first  
 stages of transformation into a col-  
 lege campus . . . . . bedrooms of Coe  
 Hall become classrooms . . . . .  
 servants' wing is made into a men's  
 residence hall . . . . . Coe Hall is  
 rewired and the conversion from  
 coal to oil begins . . . . . no heat  
 until late fall . . . . . Parking Lot B  
 cleared . . . . . the first of several  
 pre-fab. buildings goes up for use  
 in the college's second year . . . . .  
 September . . . . . one hundred and  
 forty-eight students matriculate in  
 the first freshman class and begin  
 an embryonic program . . . . . stu-  
 dents destined to see many, many  
 changes in the College's first four  
 years.

Dean Olsen's Office





*administration and staffs*

*Administration*



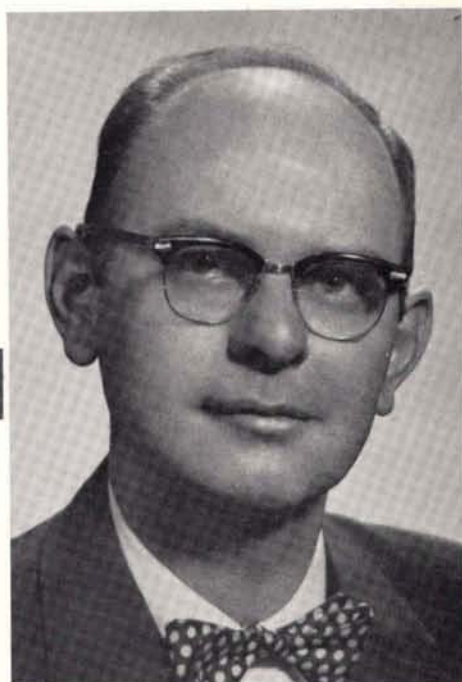
John F. Lee  
President



**Terry F. Lunsford**  
Associate Dean of the College



**Leonard K. Olsen**  
Dean of the College



**Thomas F. Irvine Jr.**  
Dean of the Engineering School



Ruben E. Weltsch, Librarian

## *Library*



Donald C. Cook  
Assistant Librarian



Nita Mosquera, Florence Graff, Donna Little

## *Switchboard*



Virginia Taylor

## *Bookstore*



Mary Gilmartin, Pat Casey, Marian Ray



Mary Goleeke (Mr. Olsen)



Elsie Remsen, Marge Smith  
(Butler Buildings)



Fay Robbins (Mr. Lunsford)

## *Secretarial Staff*

Maryanne DiLorenzo (Mr. Tilley)



Philippa (flip) McMahon  
(Mr. Austill)



Rachel DiLillo  
(Mrs. Sheppard)



## *Soda Fountain*

### *Coffee Shop*



Jake Sorensen



Rosemarie Capone, Jacqueline Lelay

### *Cafeteria*



Harriet Maniatakis, Doug Hlinka, George Maniatakis, Phyllis DiPasquale, Jacqueline Lelay.

### *Resident Heads*



Marian Ray



Merrill G. Rodin

## *Steno Pool*

Alice Mcleer, Carole Hoffman, Phyllis Minicozzi



## *Maintenance*



Clint White, Ed Lizza, Pete Streiff, Pat Casey, Lou Buffone, Leo Fauchner.

## *Supplies*

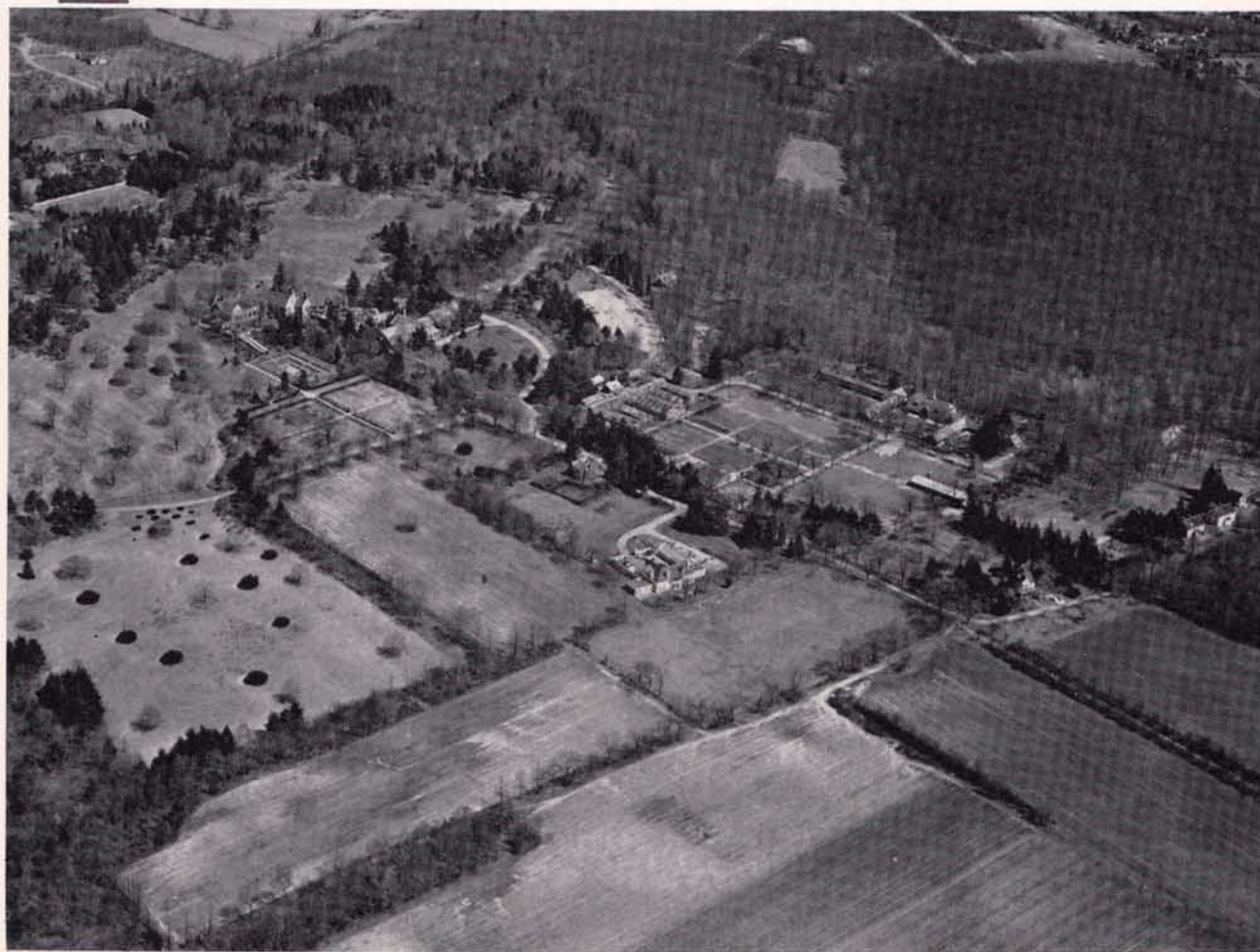


John Horton

## *Mail*



Andrew MacDonald



*1957-1958*



**Left to Right, Front Row:** June Dawson, Hildegard Kurnol, Nancy Nevole, Delores Baker, Marie Collins, Gail Bolz, Patricia Cullen, Irene Hanly, Marie Hoff, Marylou Lionells, Cecilia Maiwald, Charlotte Wright, Carol Berggren, Kathy Barrett. **Second row:** Al Ratto, Carl Schulz, Shelly Weinberg, John Nagle, Gordon Little, Eric Knuffke, Pete Vallely, John Roberts, Paul Rizzo, Ronny Warmbier, Frank Carr. **Third Row:** Alban Gass, Bill Snyder, Bob Victor, Jesse Nicholson, George May, Bill Hahl, Ed Farnworth, Mel Morris, Doug Hlinka, Bob Walker, Paul Beck.

## *Class of '61*





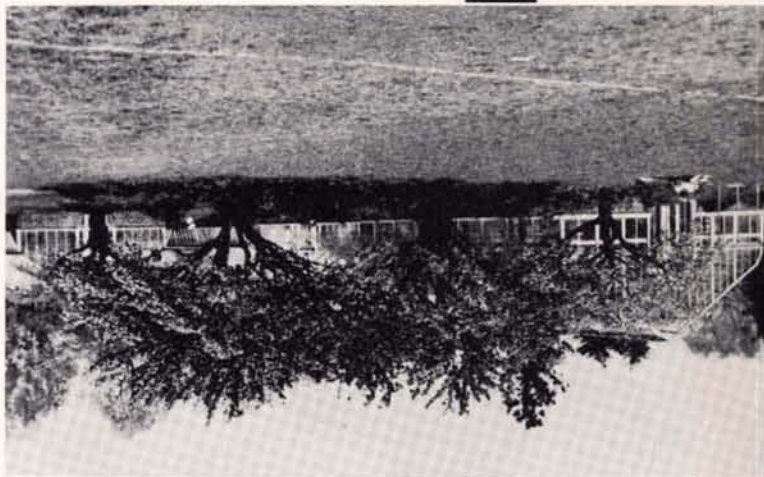
Here we come, ready or not!

September 1957: Some country launches Sputnik . . . State University launches the College on Long Island. September 16, Monday . . . empty rooms in the servants' wing . . . no mattresses . . . fresh paint, carpenters, plumbers, electricians . . . 24 residents in the Men's dorm and the guy at the end of the hall . . . George serves his first meal . . . welcome. September 17, Tuesday . . . 148 entering students, fresh and eager . . . future teachers of math and science . . . workmen . . . fresh paint . . . 14 faculty . . . welcome by Dean Austill . . . pioneers, pathfinders, guinea pigs . . . still strange, uneasy . . . orientation . . . address by Dean Olsen . . . impressed . . . manila folders, labeled Department of Mental Hygiene . . . piles of cards to fill out . . . multi-page direction sheets . . . scheduling unknown courses with unknown profs . . . 15 minute tours of the campus . . . newspaper reporters and photographers . . . registration . . . endless lines crowding the second floor . . . anxious to get fees paid, bundles of books bought, schedules approved . . . eager to start classes, meet people, explore campus, start clubs, form car pools . . . College!



Room 270—not ready

The grounds . . . "a horticultural mecca" . . . acres and acres of grass and trees . . . and name tags . . . wide green lawns . . . the baseball diamond which sprang up in the spring . . . the forbidden greenhouses filled with orchids, roses, carnations . . . the fishpond down the hill . . . the improvised golf course . . . swimming in the Italian Gardens . . . the stables with their hay, stalls, lofts . . . the old fire engine and rusty carriage . . . the muddy paths around the campus and the long winding road to the locked main gate . . . Mrs. Coe's large white house that seemed to disappear in the first of many snowfalls . . . "How do you get into the Tea House?" . . . the single empty Butler building that grew in the middle of the official baseball field . . . the quiet winding paths and quieter secluded benches . . . this is College?



Seven classrooms . . . safes, butler buttons, gold plated faucets, chandeliers, tapestries, carpets, moose and elk heads, fire places . . . and cold . . . College?

The frantic search for the first 8:30 class . . . where is the Laundry Building? . . . success greeted by cobwebs, moldy chairs and tables, rotting wooden floors, collapsing blackboard, falling tile and plaster . . . back to the big house . . . where is the map? . . . bookstore in the basement, just follow the trolley tracks . . . Main floor . . . the all-purpose room, dining hall (7:30-8:30, 5:30-6:30), cafeteria, (11:30-1:30), coffee shop (10:00-11:00, 2:00-4:00), lounge, meeting room, game room . . . study hall? . . . Jake's kitchen . . . the three blast furnace ovens . . . safe for silverware and other valuables (napkins, paper plates) . . . Inner Sanctum, faculty dining room, nee breakfast nook . . . with golden birds and buffalo . . . the library, tapestry, empty shelves, more moose and elk . . . 100,000 books (in crates, offices) . . . the Great Hall . . . shelves of old books, drapes, paintings, carpenters, painters, electricians . . . 2nd floor (via the elevator) . . . all-purpose classrooms with bathroom labs and closet demonstration halls . . . what is the arboretum office? . . . 3rd floor . . . faculty offices, student-faculty lounge (couches, carpet and cards) . . . Health office . . . Mrs. Van with her bandages, piles of pills, hypodermics, sterile gauze, hangover remedies, cough syrup . . . splints and sympathy . . . the gym . . . supervised ping pong matches and no windows.





Mr. Edward Fliess



Mr. Harold Zyskind



Mr. Merrill Rodin



Mr. Thomas Rogers

Pioneers . . . brand new courses  
 . . . an experiment in education  
 . . . enthusiasm, absorbing material, hard work, papers, problems, experiments, discussions, full attendance . . . small classes . . . round table . . . smoking in the classrooms . . . top notch faculty, 1/4 receive research awards . . . English I . . . papers, grammar, readings, papers, discussions, papers . . . Fliess, Zyskind, Rogers, Chill, Rodin, Levin . . . effective communication, argumentative and creative writing . . . Humanities I . . . tragedy, Shakespeare, Aeschylus, Ibsen, Shaw . . . papers . . . critical analysis . . . poetry . . . the novel . . . Huckleberry Finn, Madame Bovary, The Brothers Karamazov . . . more papers . . . Social Science I . . . Plato, Aristotle, medieval culture and social development . . . Rousseau, Voltaire . . . papers . . . the French Revolution, the advance of Scientific inquiry, the Enlightenment . . . papers . . . Bowen, Fleisher, Chill, Rodin . . . the German course . . . 4 students and a part-time prof.



Mr. Richard Levin



Mr. Emmanuel Chill



Mr. Ralph Bowen



Mr. Leonard Gardner



Mr. Richard Mould



Mr. Frank Erk

Education I . . . . Freud, The Arapesh, Harry, contemporary culture, social problems, psychological studies . . . . papers . . . . Gardner . . . . Mathematics I . . . . logic, development of concepts, sets, analytic geometry . . . . all mumbos are jumbos, all jumbos are boojums . . . . Erk, Kalechofsky, Mould, Gordon, Swartz . . . . hours of homework . . . . Natural Science I . . . . Ptolemy, Newton . . . . Krauskopf text left on the shelf . . . . inclined planes . . . . "What is Archimedes principle, Miss Ryan?" . . . . lead shot sprayed around the room . . . . Dalton, Avogadro, Bohr . . . . problems and more problems . . . . the problems of being the first class . . . . disorganization . . . . no orientation . . . . no pattern . . . . no examples . . . . guinea pigs.



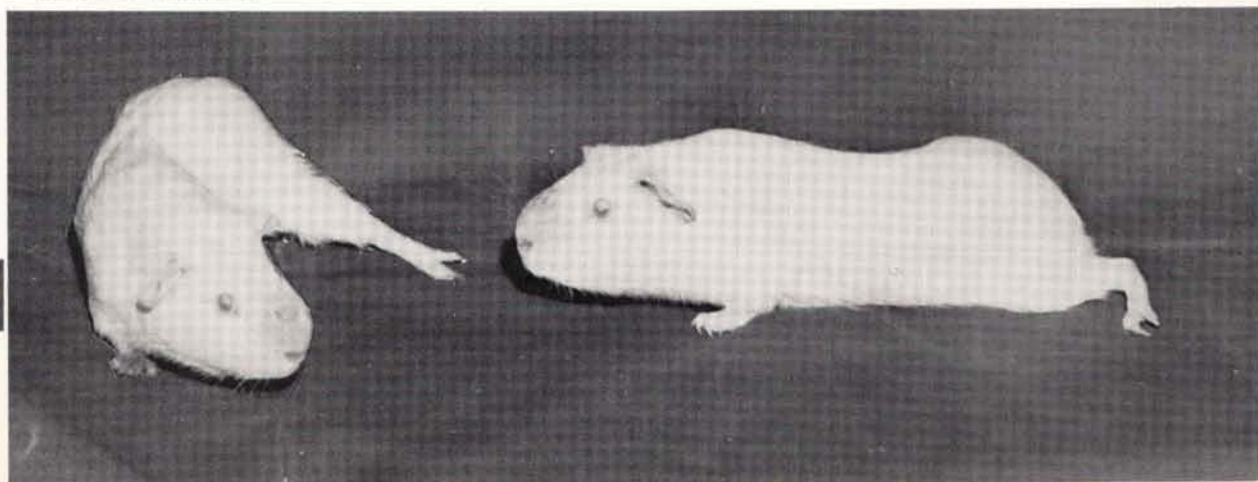
Mr. Barry Gordon



Mr. Robert Kalechofsky



Mr. Clifford Swartz





Classrooms empty at 3:00 . . . . 4-day week for many . . . . this is college life? . . . . no traditions or athletics . . . . where are the extra-curricular activities? . . . . We can do it! . . . . We will do it! . . . . clubs to start, student government to form, dances to be held, a newspaper to print . . . . teams and rallies . . . . let's get going!

September goes by . . . . a get-acquainted dance in the afternoon . . . . few commuters stay . . . . cliques take hold . . . . the class subdivides . . . . a science club begins, Mr. Swartz and 4 students . . . . one trip through the greenhouses . . . . the club dissolves . . . . Mr. Erk initiates a college chorus . . . . the cafeteria overflows at the first meeting . . . . regular meetings begin . . . . enthusiasm fades . . . . we need a student government . . . . a meeting is called and 50 students attend . . . . subcommittees A, B, C, and D are formed . . . . there are colleges to contact, types of governments to study, constitutions to compare . . . . posters appear . . . . we will have a newspaper! . . . . Henri Smit gets the ball rolling . . . . THE SUCOLIAN . . . . refuge discovered in the Trio and Pine, the Old Homestead and The Mill River Inn . . . . a potential club appears as the Catholic students unite as Newmanites . . . . sub-committee E appears . . . . mysterious posters and signs . . . . secret meetings of 17 men . . . . the commuters' answer to the resident unity . . . . Kappa Sigma Pi emerges . . . . the girls are at work . . . . Beta Phi is the result . . . . parties at the Trio after the Greek invasion . . . . optimistic for the future . . . . the sorority grows to 12 . . . . Mr. Kal works with math club . . . . 5 students and Courant . . . . this is getting to look like a College!





The faculty initiates "our first great tradition" . . . . October 30 . . . . classes excused . . . . a holiday . . . . "Nameless Day" . . . . fellows vs. girls at softball . . . . which way do you run? . . . . the faculty challenges the victorious males . . . . the intellectuals show their might . . . . boxed lunches by Slater . . . . picnic on the patio . . . . the colossal tug of war . . . . revenge is sweet . . . . profs retire to remove the mud . . . . egg tossing, egg flinging, egg shampoos . . . . run for cover . . . . the scramble for ammunition . . . . no one is off limits . . . . Dean Austill has yellow hair . . . . Mr. Rodin isn't going to let her get away without retaliation . . . . there they go around the bush . . . . dancing later in the cafeteria . . . . laundry bills . . . . a blast! . . . . "our first great tradition" dies.





"Yes, Virginia, there is . . ."

November . . . the first college dance . . . "The Sputnik Strut" . . . music by Mel Morris . . . beginning of an era . . . Great Hall filled . . . pumpkins and hay, chicken wire and aluminum foil . . . apple cider and donuts . . . and donuts . . . the dorm students feast for a week . . . November 21 . . . a solemn occasion . . . the College Convocation . . . the President of State University, the Board of Trustees, reporters, and photographers . . . our faculty in a parade of black gowns . . . Mrs. Erk plays the organ . . . formal speeches and pomp and ceremony . . . our college is a college.

Basketball season approaches . . . we finally have a team . . . Bill Riethle comes to coach . . . our first defeat . . . a preview . . . hopes still high and spirit strong . . . winter in Oyster Bay . . . snow . . . the Christmas tree by the main stairs . . . carolling while we decorate . . . holly and mistletoe . . . colored lights and broken ornaments . . . good cheer fills the halls . . . the party after classes end . . . moving the tree to Great Hall . . . a brave attempt . . . the surviving chorus members lead the class in song . . . Hilda and her magic accordion . . . Santa Austill arrives with clanging bells and sticky candy canes . . . are those really pillows? . . . the beautiful buffet supper catered by Slater . . . roaring fire in the fireplace and dancing to records through the evening . . . an empty building for two weeks.



He'll never make it down that chimney.



# The Sycolian



**THE SUCOLIAN**  
 THE SUCOLIAN is the only weekly publication of the college. It is published by the Sycolian Club, a group of students who are interested in the college and its activities. The Sycolian is published every week, except during the summer months. It contains news, articles, and other information of interest to the college community.

**THE SUCOLIAN**  
 The Sycolian is the only weekly publication of the college. It is published by the Sycolian Club, a group of students who are interested in the college and its activities. The Sycolian is published every week, except during the summer months. It contains news, articles, and other information of interest to the college community.



January 6 . . . a cold building, cold classrooms, wilting Christmas tree . . . 128 wilted spirits . . . EXAMS . . . interterm recess, thank goodness . . . a much-needed rest . . . 119 return . . . Nancy and Sue in wheelchairs . . . first legal use of the elevator . . . more trips to town . . . discouragement . . . precarious status . . . routine . . . Administration increases by one with the arrival of Mr. Tilley . . . Dean of Admissions . . . will we really have to face an incoming class? . . . probation letters . . . the first of many snowstorms . . . winter in Oyster Bay . . . cars pile up on once tranquil Planting Fields Road . . . classes called off 8 times . . . no classes 5 Fridays in a row . . . students come anyway . . . sleighs and trays put to use . . . marooned commuters and isolated residents . . . the big defrost . . . paths beaten back to the Pine and Trio . . . Newman Club holds first meeting . . . George May elected President and our first official club sets out to find a Chaplain . . . the first issue of the SUCOLIAN appears . . . the health of the chorus wanes . . . a dramatic group forms, naming Irelynn Orcutt head of the "State Troupers" . . . first projects are Lysistrata and Tartuffe . . . read, reread and shelved . . . along with the group's enthusiasm . . . the remaining governmental sub-committees still at work . . . March 20 . . . the Constitution nears completion . . . first of many . . . Chorus fading fast, 8 sopranos, 3 altos and 2 tenors . . . March 27 . . . first Freshman Class meeting . . . degree requirements presented . . . again, first of many . . . school colors determined and presented . . . Blue and Gold . . . Beta Phi brings a new fad to the campus when they initiate "Crazy Days" . . . the movement kicks off with "Hat Day" . . . fruit bowls, homburgs, top hats, bird cages, safari hats . . . "Chemise Day" . . . females only . . . Nancy Nevole in her potato sack . . . then "Bermuda Day" . . . the most popular . . . Pat Crean wears pink.



Dior?

The SUCOLIAN and the Newman Club hold first officially sponsored dance, "The Spring Fling" . . . . petitions circulate . . . . square dance or semi-formal? . . . . it's a long hard fight but the country-style partisans win out . . . . 4 hours of do-si-do, multiple marriages and punitive jail sentences . . . . social success but financial flop . . . . series of weekend record hops to pay off the deficit . . . . star attraction is Rodger Morphet's movies of Nameless Day . . . . who's that blushing in the corner? . . . . Third issue of "The Sucolian" comes out to announce the death of the chorus . . . . Mr. Erk explains that 2 sopranos and a tenor couldn't give a concert . . . . solemn requiem . . . . "Crash" Walker earns his title . . . . a school bus, a little old lady school teacher, two trees and a fire hydrant all in one day . . . . picnics on the lawn . . . . visitors' passes . . . . classes on the patio . . . . the constitutional sub-committees scrapped . . . . along with their "near finished" documents . . . . student-faculty softball game . . . . students avenge their lost honor . . . . visits to Dean Austill . . . . waning enthusiasm . . . . greater crowds at the Pine and Trio. Sorority holds a tea on April 22 for new members . . . . Dean Austill is honored guest . . . . Tea House's first official use . . . . First plans for Stony Brook campus revealed . . . . State University College on Long Island sign mysteriously disappears, the start of another trend . . . . a white-cast army of temporary invalids appears on campus.



We'll get even—wait 'til June!



Well, at least the form is good.



"ye old swimming hole"

College holds Open House on May 4 and 10 . . . .  
 Sorority members act as hostesses and conduct guided  
 tours aided by the men residents . . . . Compus in full  
 bloom . . . . Dean Austill holds outdoor banquet  
 for the dorm students . . . . unpredictability of new courses  
 . . . . lack of equipment . . . . mass cutting . . . .  
 softball games on the front lawn . . . . outdoor chess  
 resumes . . . . commuters rediscover that walking can  
 be fun . . . . Kappa Sigma Pi and Beta Phi decide  
 to hold the Spring Formal . . . . tickets printed, posters  
 made, decorations arranged . . . . Final exams begin  
 May 26 . . . . 10 grueling days . . . . 116 register for  
 comps . . . . on succeeding days more and more are  
 seen soaking up sun on the front lawn while exams are  
 in progress . . . . the endurance tests . . . . faculty wives  
 throw a tea on the patio after the last exam . . . . sighs  
 of relief.



Who needs Slater!



Just think, Mr. Austill, the dorm at  
 Stoney Brook will hold 10,000.



"I wonder what Nat. Sci. will be like next year."



Who needs Slater!



June 6 . . . . . the spring formal, Moon Mist . . . . silver stars hang from the ceiling . . . . what had been Great Hall and the Cafeteria are now a fairyland . . . . long tables with silvered candles . . . . dinner jackets, flowing gowns and champagne music by Mel Morris . . . . Jim Rowan and Kathy Barrett reign as king and queen . . . . full attendance by our elegant faculty . . . . overflow dancing on the patio . . . . a night to remember before our last goodbyes.

One more chance . . . . vacation cut short . . . . 65 hit the books for Nat. Sci. I or Math retests . . . . or both . . . . early, unexpected reunion . . . . Tuesday, September 9 . . . . "They put in Bohr again!" . . . . recovery in the Trio . . . . and preparation for Math . . . . Wednesday . . . . more torture . . . . they're over . . . . 6 make the grade . . . . and for many . . . . the end.

*1958-1959*



Left to Right, Front Row: Mary Fedoroff, Barbara Blacker, Maddie Fisher, Joy Johnson, Nina Haug, Pat Glenn, Marion Eisenstein, Muriel Benter, Mary Flandorfer. Second Row: George Loy, Gene Keegan, Howie Anderson, Larry Dawson, Mike Brush, Bill Butler, Gary Lindstrom, George Gurney, Paul Coleman, Lois Ginsberg. Third Row: Janet Fishman, Herb Jamison, Brian Kiefer, Philip Harsha, Al Katz, Ken Lonske, Harry Standinger, Jim Kelly, Mike Davidson.

## *Class of '62*

Left to Right, Front Row: Barbara Kozakiewicz, Carol Williamson. Second Row: Ellie Moskowitz, Woody Cohen, Glenn Sharrock, Kathy O'Neill, Sid Secular, Fred Gugliano. Third Row: Bob Skorpil, Ed Beuel, Robert Jedlicka, John Lussi, John DePew.



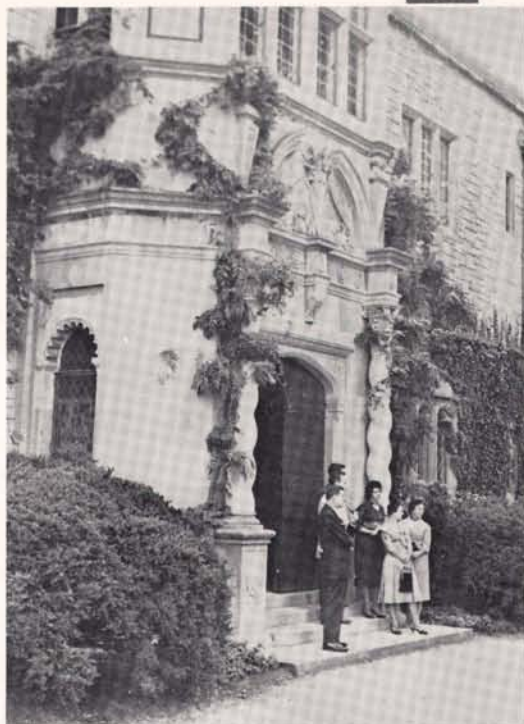
Left to Right, Front Row: Carol Okvist, Mary Ellen Maraia, Lana Schearer, Ann Meilinger, Walter Spaeth, Lance Lessler, Burt Marks, Bob Silverstone, Mike Shodell. Second Row: Maryann Mills, Judy Patchell, Judy Stout, Ginny Nelson, Cornelia McCormack, Bill Margulies, Larry Paul, Dick Pav, Gene Zsuffa, Mel Reich, Marv Rosenberg. Third Row: Al Messina, Marty Samoiloff, Joe O'Carroll, Ken Lotter, Bill Niciu, Hank Liers, Walt Sevia, Bob Pollack, John Stubenrauch.



September 14, 1958 . . . . first members of the Class of 1962 arrive on campus, the resident students . . . . females now occupy Coe Hall . . . . new rules, curfews, Mrs. Grace and her sign-out book . . . . men trudge down to the near-finished stables . . . . some dormitories! . . . . no heat or light or beds or desks . . . . strange faces . . . . new rooms . . . . uncertain and uneasy . . . . the Orientation Board consists of eight seasoned and hardened sophomores who get the first look at that "hand-picked" class . . . . all 168 of them.

Orientation . . . . welcoming address by Dean Olsen . . . . stimulating and challenging . . . . "Don't forget a word, you'll be questioned on it," quipped the sophs . . . . tours of the campus . . . . dust, heat . . . . placement exams, seminars, friendly faces, picnic supper . . . . movies . . . . onset of familiarity . . . . September 18 . . . . 1, 2, 3 . . . . 78 Sophomores return . . . . mass together in a corner of the cafeteria . . . . eye the newcomers with suspicion, distrust . . . . young, naive, uninitiated freshmen . . . . "They don't look so smart" . . . . Soph elections . . . . 5 revotes . . . . Al Ratto, president; George May runner up . . . . Ro Capone, vice-president; George May comes in second . . . . Marylou Lionells, secretary; George May next in line . . . . Pinky Joyce, treasurer; George May downed by one.

Frosh registration . . . . confusion and complications . . . . piles of papers and lines of people . . . . ready-made schedules? . . . . first meeting of the entire student body . . . . Newspaper, clubs and sports, (present and future) discussed and planned . . . . Freshmen are raring to go . . . . but where? . . . . Sunday, September 21, faculty wives' tea for students and parents . . . . lovely in spite of rainstorm . . . . Great Hall jammed for the first time . . . . Orientation is finally over.



Arrival of the uninitiated



. . . . and tours . . . .



Mrs. Margaret Grace





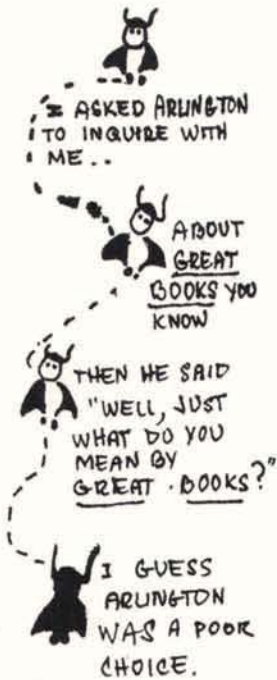
Miss Katherine Sawyer



Mr. Robert Endleman



Mr. Jay Williams



Classes begin . . . bookstore crowded . . . sophomores pick and choose . . . freshmen grab handy packs . . . classes meet till 5:30 . . . and Saturdays too! . . . Miss Sawyer, Associate Dean of Students and Resident Head . . . Engineering and pure science majors form part of the frosh class . . . sophomores specialize, Physics 20, Chemistry 20, Math II . . . Biology introduced into the curriculum in Nat. Sci. II . . . size of faculty doubles . . . Asher, Endleman, Williams increase Social Science Division . . . Bremer, Ellington, Gelber, Sternfeld join the Humanities Division.



Mr. Sidney Gelber



Mr. Robert Sternfeld



Mr. Leonard Eisenbud



Mr. Francis Bonner



Mr. Edward Gilbert



Mr. Sol Kramer



Mr. William Lister

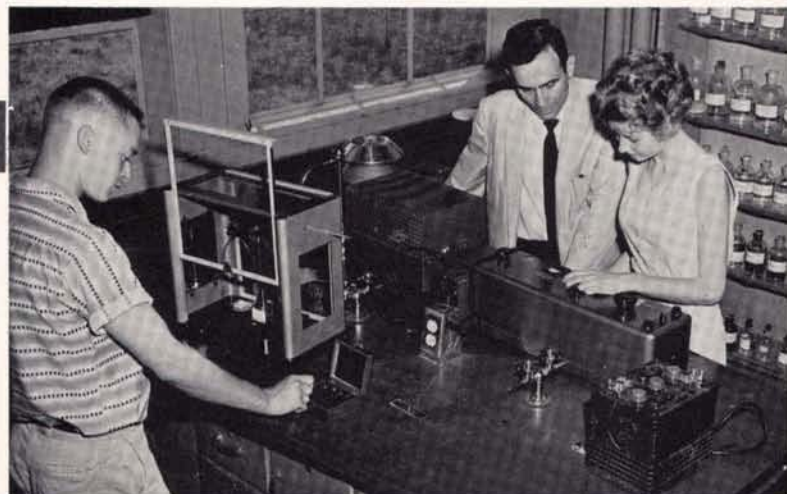


Mr. Henry Von Mechow

In the sciences . . . Eisenbud teaches Physics, Bonner and Silverman added to the Chemistry department, Gilbert and Kramer teach Biology . . . Lister and Rasof enlarge Mathematics staff . . . Mr. Weltsch appointed Librarian . . . Mr. Von Mechow becomes director of athletics.

Humanities I for two hours . . . regular laboratories three and four hours long . . . classes in the Butler Buildings . . . "How come we have all our classes in those tin huts," complain the sophs . . . Frosh panic as sophomores describe Nat. Sci. I . . . "It just can't be that bad" . . . just wait!

Mr. Joseph Silverman with Nat. Sci. I students.



Soph enthusiasm wanes rapidly . . . Beta Phi still hanging on but Kappa Sigma Pi is gone . . . Ratto resigns as class president and Ro Capone moves up . . . new elections are held and Ed Farnworth becomes veep . . . George May does it again . . . Dean Austill appoints first Election Board and frosh nominations begin . . . the frantic scrambling for signatures . . . no platforms are posted but a flurry of posters and buttons appear . . . long speeches to wind up the campaign . . . October 26, Tim Bergin elected president; Ellen Joyce, Vice-president; Alice Lieberman, secretary; Hank Liers, Treasurer . . . Masque Ball held on Nov. 1st . . . marks the demise of Beta Phi . . . music by Mel Morris . . . sophomores panic! . . . Dean Olsen calls meeting to reassure the sophomore class . . . "curriculum does not exist solely to reduce the class to a minimum" . . . some encouragement.



"I knew this outfit would come in handy."



This commuting problem is getting worse and worse.



**I MEAN...WELL WHAT**

**I MEAN IS - PERSONALITIES  
DON'T COME INTO MARKS  
DO THEY PROFESSOR?  
LET'S BE REASONABLE  
SEAFERT. THERE ARE SOME  
PEOPLE YOU'LL NEVER LIKE  
NO MATTER HOW HARD YOU  
TRY. SO WHY BE HYPO CRITICAL?**



The Pine Tavern

Tests and papers bring a rash of cramming . . . time found for ping-pong, archery, hearts, bridge, and . . . pinocle . . . Tuesday and Thursday afternoons free for activities . . . boys tackle flag football . . . Zombies Platonized . . . Mr. Borghard's offer to coach crew accepted . . . Nov. 3. . . . crew "breaks water" . . . brrrr . . . Killer Kal weightlifts with students . . . wrestling in the basement of Coe Hall . . . lockers . . . dorm boys "enjoy" 1/4 mile hike for meals . . . shivering through shaves and showers . . . five minutes to get to Lab . . . Wednesday, Nov. 26 . . . heavy clouds dominate leaden sky over Coe Hall . . . gloom pervades the atmosphere . . . Impending doom? . . . day of first Nat. Sci. I test . . . hurried attempts to master slide-rule . . . Pine and Trio offer solace . . . Sophs smug, "They didn't do any better than we did and they even dropped the passing mark" start of well needed Thanksgiving vacation . . . thanks for . . . sleep . . . good food . . . no homework.



**I MEAN - 42 -  
I WOULDN'T MIND  
IF I WAS SMART  
AND LAZY, BUT I'M  
STUPID AND  
INDUSTRIOUS.**



revived . . . refreshed . . . ready . . . renewed energy put into forming a student government . . . "Why do we need a student government?" . . . light shed in lectures by Bremer, Swartz, and Williams . . . State Troupers dramatize Tartuffe . . . What is DHRR? . . . students mourn as Mrs. Van leaves . . . Newman Club, Hillel, and S.C.A. work feverishly on Constitutions . . . Dance Hop Record Review is initiated . . . music by M.M. . . . musical interludes in Great Hall occupy lunch hours . . . balancing tea cups, sugar bowls, cream pitchers, and cookies . . . Miss Sawyer holds teas for girls in her apartment . . . Chorus busily rehearses Christmas carols . . . high spirits . . . Newman Club, Hillel, and S.C.A. plan 1st Annual Christmas Ball . . . George May chairman . . . class officers prepare Christmas party . . . anticipation . . . feverish activity . . . and inactivity . . . prank of the year . . . Mr. Rodin's Triumph gift-wrapped in main lobby . . . Christmas tradition born? . . . carolers deck tree with color and lights . . . appreciative audience hears recording of Handel's Messiah . . . Christmas party . . . gay day . . . male cha-cha line . . . Shelly and Burt's soft-shoe routine . . . Hilda on the accordion . . . caroling . . . debut of 40-voice college chorus . . . Jing, jing, Jing, jing . . . directed by Mr. Erk . . . blazing fire, dancing and refreshments . . . class attendance drops . . . climax of festivities before vacation . . . gala Christmas dance . . . couples intimately dance by candlelight and fireside . . . two bands provide music . . . then . . . home for the holidays.



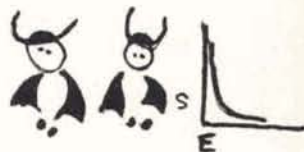
Pass the hat around again, tinsel's getting low.



Debut of the Chorus.

New Year's resolutions . . . . exams in two weeks . . . . does the Nat. Sci. I department really think that bears ice skate? . . . . Physics 20 class plays-er-works with slinky . . . . for every epsilon greater than zero there exists a delta such that . . . . we need a student government . . . . Pinky's Deacons and Jason's Science Corner . . . . Steno, Sterno, Minno . . . . Bumpo? . . . . regular features of the SUCOLIAN . . . . Jan. 19 . . . . first basketball game against Hicksville faculty . . . . Jean Varrichio, new nurse, arrives . . . . day of reckoning . . . . exams begin . . . . "I forgot my number" . . . . three-hour ordeal . . . . coffee served . . . . exam week ends with math tests . . . . letdown . . . . semester break . . . . doubt.

Feb. 1959 . . . . new semester . . . . grades at the switchboard . . . . "you're in a precarious position too?" . . . . new resolutions . . . . new study habits . . . . on paper . . . . new Soc. and Hum. electives offered . . . . sophs invade privacy of fruit flies . . . . red eyes, white eyes, curly wings . . . . sitters wanted for weekends . . . . cultural program planned . . . . art exhibits by Nick LaBella and Tibbeus O'Reilly . . . . satisfying all tastes . . . . stables almost ready for occupancy . . . . Hamlet and Harvey . . . . great debates (Lincoln-Douglas style) on forms of student government . . . . every Tuesday . . . . Rodger Morphet gives up SUCOLIAN editorship, Marylou Lionells takes over . . . . sports program expands . . . . teams nick-named Soundsmen . . . . Paldy's last second shot . . . . hoopsters win first game against Hicksville . . . . "Guess beards don't slow you down" . . . . Feb. 26 . . . . crew "breaks water" again . . . . with additional shell from Rutgers . . . . raw thumbs . . . . callouses . . . . blue badges of determinations hung from their windows . . . . girls tromp on trampoline at Brookville gym.



**YES NEWTON...  
PHYSICISTS TOO ARE  
HUMAN-SUBJECT TO  
THE SAME FOIBLES  
AND EMOTIONS AS THE  
REST OF HUMANITY...  
HERE FOR EXAMPLE IS A  
GRAPH OF ENJOYMENT  
VS. STUDY FOR MY  
SOPHOMORE YEAR AT  
THE UNIVERSITY.**



**YES CUNNINGHAM-  
GREAT MINDS MAKE  
LITTLE MISTAKES...  
I FORGOT TO STUDY**





SCIENCE IS  
SO DEMANDING



Era of the apartment begins . . . off-campus housing available . . . sophs complaining again . . . why are Darwin, Weismann, and Mendel being read in Humanities? . . . because . . . it's a stimulating and thought-provoking experience . . . lack of student interest discourages student leaders . . . third floor lounge becomes study room . . . evicted card players seek refuge in boys' dorm . . . winter lingers on . . . dull . . . dull . . . dull . . . new addition to campus . . . Mr. Kramer and his cockroaches . . . Blossom's kittens . . . school canceled . . . snow . . . SUCOLIAN puts out issues regularly . . . seven, to date . . . S. U. frosh celebrate St. Patty's Day . . . use of petition successful . . . spring recess changed . . . struggle over structure of constitutions continues . . . end in sight . . . March 26 . . . hectic packing . . . caravan of clothes from Coe Hall . . . girls' move to stables . . . Easter vacation . . . at long, long last,

Vacation over . . . final stretch . . . cafeteria moved from Coe Hall . . . separates the boys' dorm from the girls' dorm . . . becomes a scene of social functions . . . Newman Club's "Staggerlee" marks first use as dance floor . . . music by M. M.



Service with a smile.



First intercollegiate sporting event . . . . S. U. crew rows against St. John's . . . . four more to follow . . . . Rec building to be ready in fall . . . . spring . . . . ah!, spring . . . benches occupied . . . paths trod . . . the blue lady is discovered . . . classes empty . . . budding trees and flowers foster two-getherness . . . Bruno gets wanderlust . . . soph boys frightfully awaken dorm girls . . . flares or nightmares? . . . complaints heard . . . is SUCOLIAN a vegetable? . . . forced to change name . . . students reluctantly accept newspaper's new name . . . STATES-MAN . . . inexpensive cultural entertainment . . . Messrs. Rodin and Gilbert sponsor 'Curtain & Canvas' . . . planned trips received enthusiastically by students . . . Metropolitan Museum of Art, Seagram and Lever Buildings, Dramatic workshop . . . bowling begins . . . Mr. Rasof advisor . . . 1/10th of student body participates . . . April 25 . . . pre-dawn journey in packed cars . . . crew races Clark . . . dead heat finish . . . wins first trophy . . . we want more intercollegiate sports says 93.651% of student body in a poll . . . DHRR is coming again.



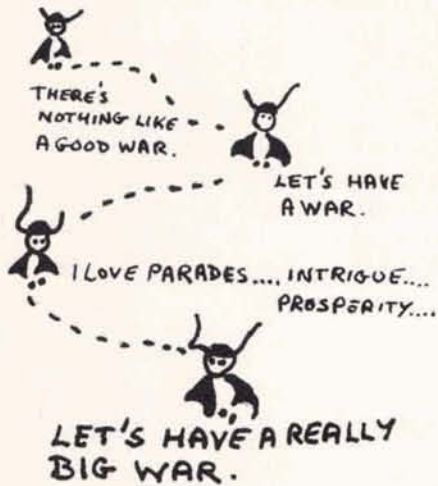
LOVE IS A MANY SPLENDORED  
THING, MONEY IS GREAT, CATS  
ARE JUST FINE.  
SCHOOL STINKS.



Our heroes



"Stay, Bruno, now stay, boy . . . . STAY!!!"



Republic or Polity? . . . . climax of six months' work . . . . class officers present constitutions . . . . student body meets to discuss and debate merits of the two constitutions . . . . interest high . . . . heated arguments evolve . . . . officers favor polity . . . . favored polity fails to receive 2/3 majority . . . . minor changes made . . . . second vote . . . . still no approval . . . . officers disheartened . . . . "What do they want?" . . . . student petition proposes amendment . . . . May 8 . . . . amended Polity constitution ratified . . . . elections scheduled for Executive Committee officers . . . . elected: Ro Capone, Moderator; Marylou Lionells, Rec. Secy.; Ann Meilinger, Corres. Secy.; Cornelia McCormack, Treasurer.

Dean Olsen plays host to sophomores . . . . a back yard barbecue . . . . Profs desert classrooms to play softball with students . . . . "But Mr. Bremer, this is softball, not cricket" . . . . needless to say, students win . . . . busy spring weekend planned . . . . Jazz concert headed by Mel Morris . . . . DHRR same night . . . . open house . . . . welcomed guests tour shaded paths and blooming gardens . . . . ends with stirring performance by college chorus . . . . "Freddie's Frolic" at Belmont . . . . impromptu crew sinks.



You'll never beat St. John's that way.





"C & C" bus trip to Amato opera and museum of modern art . . . . College sponsors North Shore Regatta in Oyster Bay harbor . . . . new trophy in circulation . . . . finals near . . . . brief return to classes . . . . are all mathematicians magicians? . . . . Mr. Lister says poof . . . . er . . . . proof and lights go out . . . . Nat. Sci. II students study evolution at the Museum of Natural History . . . . crew leaves the water . . . . the brave ones assist on the four-mile trek to the campus . . . . Mr. Kal holds classes on the patio . . . . the Bohr atom . . . . one week to go . . . . studying on the lawn . . . . neglected books hastily surveyed . . . . coffee shop deserted . . . . bowling alleys too . . . . studying in the library . . . . frantic attempts to catch up . . . . two more days to go . . . . midnight oil . . . . no-doz . . . . coffee . . . . May 25 . . . . big facts . . . . little details . . . . formulas . . . . applications . . . . theorems . . . . Sophs get 6-hour exams but frosh are spared . . . . recollection exhausted . . . . Faculty wives give Tea on patio . . . . wilted students revive . . . . frosh make last hasty preparations for Spring Formal.



Mill River sighted, full speed ahead.



Did you  
EVER FEEL  
LIKE AN  
AFTERTHOUGHT?



I LOVE BOOKS  
DON'T YOU?  
MOST OF ALL I  
LOVE GREAT BOOKS.  
THEY BURN BEST  
OF ALL.

The big push begins





Last big fling . . . , flowing fountains reflecting multicolored lights . . . dancing on the patio . . . Coe Hall echoes to the music of two bands . . . students and faculty dance and delight . . . gay atmosphere . . . relaxation at last . . . see you in the fall . . . or maybe sooner.

The College offers its first summer course . . . Nat. Sci. I and Math I . . . here we go again! . . . study through the summer and for what? . . . September comps as bad as ever . . . few pass . . . well, better luck next year.

*1959-1960*



ABOVE—Left to Right, Front Row: Diane DiGiovanni, Linda Hoffman, Betty Egan, Mary Ann Huck, Audrey Hopkin, Lee Ann Harris, Kathy Greene, Judy Farley, Margot Fuhrman, Barbara Campion, Lynne DaSilva, Barbara Englert, Barbara Else, Mathilda Haeefele. Second Row: Steve Heller, Howie Blue, Joel Bergman, Gerry Goldstein, Jerry Caieti, Jack Czarniewitz, Fred Fritz, George Dohanich, Ken Campbell, Jerry Gilbert, Dave Buckhout, Ken Gross, Alex Censor. Third Row: Dennis Golin, Marty Frank, Warren Hlinka, Dick Blumhagen, Bob Becker, Tod Fowler, Tony Haug, Steve Barnett, Mike Cruty, Bruce Gallagher, Ralph Costello.

BELOW—Left to Right, Front Row: Carolyn Mayo, Claire Luscher, Barbara McCann, Lois Lawson, Joyce Pytell, Eddie Levine, Ruby-mae Leonhardt, Jeanne MacDonald, Barbara Polivy, Arlene Jacobs, Annette Kraemer, Joan Kopfman, Roberta McCollough, Amy Aronson. Second Row: Annette Marchese, Elinor Maxwell, Penny Pollack, Ann Kurz, Carol Klarberg, Sara Liebowitz, Mary Jane Jennerich, Bill Kropac, Mike Levy, Marty Meltz, Jay Pulver, Victor Neuwirth, Bill Muller. Third Row: Jim Pecoraro, Bruce Monte, Jack Mattice, Joan Monks, Roger Renke, Eric Kadel, Jay Kirschenbaum, Pete Monteferronte, Dave Malcolm, Bob Kiesling, Henry Ostman, Karl Mamola, Charlie Norwood.





# Class of '63

Left to Right, Front Row: Ann Saladino, Margaret Weaver, Marie Schachtschneider, Nancy Yevchak, Dorothy Robinson, Harry Waitz, Raphael Wolfson, Leo Redmond. Back Row: John Unrath, Geoffrey Newton, Alan Schuttleworth, Phil Mighdoll, Kermit Updegrove, William Snizek, Bob Rafelock, Norman Wixon.

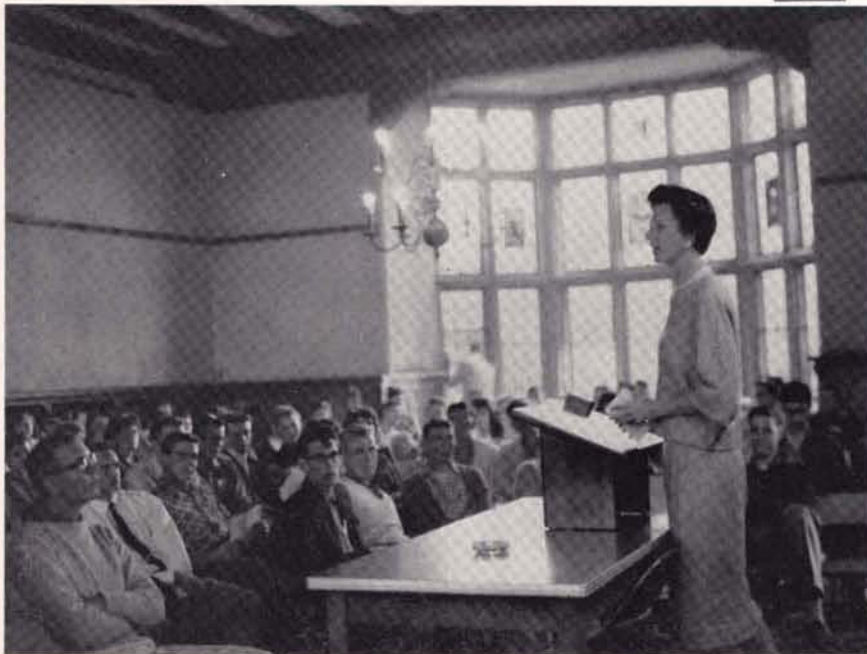
Left to Right, Front Row: Edrie Wagner, Ginny Weber, Jean Riddell, Cynthia Schoenbaum, Judy Schepps, Caryl Sullivan, Steve Zemsky, Richard Towber. Back Row: Frank Saunders, Otto Shurniewets, Leo Zafonte, Jerry Waters, Paul Segall, Bill Queen, Pat Barry.



**S**eptember 14, 1959 . . . . 186 in the Class of '63 . . . . here we go again . . . . younger than ever . . . . smarter than ever . . . . "Don't worry, they too will face Nat. Sci." . . . . 13 on the Orientation Board . . . . a united front of upperclassmen . . . . the speeches of welcome and cautious encouragement . . . . tours, seminars, questions, registration, lines, confusion, mug shots . . . . a new bookstore but the same old bundles . . . . 130 sophomores and 58 juniors return . . . . the "social season" begins . . . . a picnic and a movie . . . . Bart Haigh calls the year's first square dance . . . . Executive Committee announces the year's budget . . . . \$12,500 . . . . a great diversity of interests . . . . actual and projected . . . . newspaper, culture, sports and another spring formal . . . . upper class officers elected . . . . sophomores elect Fred Schubert as class president . . . . George May wins an election! . . . . president of the class of '61 . . . . Orientation closes with a reception for frosh and their parents.



Orientation Board . . . . **Left to Right, Front Row:** Madeline Fischer, Lana Shearer, Nancy Nevole. **Second Row:** Michael Coglianese, Ronny Warmbier, Jim Kelly, Burt Marks, Glenn Sharrock. **Third Row:** Ed Farnworth, George May, Mike Davidson.



Miss Elizabeth Morrow welcomes Class of '63.



Miss Mirella D'Ancona



Mr. Isaac Nemiroff



Mr. Rodman Doll



Mr. David Fox

Nineteen join the faculty . . . . all subject areas expanded . . . . Chem. 10 and Physics 10 replace Nat. Sci. I-for advanced frosh and the two-time losers . . . . D'Ancona and Nemiroff teach the new art and music courses . . . . Doll and Karrass join the Math department . . . . Fox, Meuther and Raz become members of the Physics staff . . . . Kristein and Nelson join the Social Science Division.



Mr. Abraham Karrass



Mr. Herbert Meuther



Mr. James Raz



Mr. Marvin Kristein



Mr. Benjamin Nelson



Mr. Theodore Goldfarb



Mr. William LeNoble



Mr. Fausto Ramirez



Mr. Sei Sujishi

Goldfarb, LeNoble, Ramirez and Sujishi are new additions to Chemistry . . . the Biology staff joined by Goldstein, Rosenberg and Smolker. Parslow teaches French and Humanities . . . . Stampfer joins the Humanities Division . . . . Watson is associate professor in the Philosophy of Science . . . . Miss Morrow appointed Associate Dean of Women.

Butler Buildings expand . . . . another wing goes up . . . . now there are three . . . . new recreation building near completion in September, grand opening for Jan. exams . . . . a gleaming, barren, aluminum pre-fab . . . . with no space for bleachers . . . . parking lot "C" re-graveled for frosh . . . . Laundry Building renovated . . . . "so that's where room 3 is!" . . . . library expanding with 9,000 new volumes each year . . . . basement stacks fill quickly . . . . Mr. Vinson new assistant librarian.



Mr. Solomon Goldstein



Mr. Marvin Rosenberg



Mr. Robert Smolker



Mr. Morris Parslow



Mr. Judah Stampfer



Mr. Walter Watson



In early October, Wednesday afternoon dance classes begin . . . Bart Haigh and Evelyn Nostrand demonstrate the Latin technique . . . in  $\frac{3}{4}$  time . . . crew hits the water . . . full shells . . . new sweat suits and rubber waders . . . fishing tackle and worms . . . October 20 . . . Dr. Hamilton on campus . . . newly appointed president of entire State University . . . "State University College on Long Island—a giant step in education" . . . Administration promises the B.A. degree by June . . . again . . . Marylou Lionells bows out and 4th editor of the Statesman takes over . . . Carol Ann Seifert . . . culture comes to campus . . . 4 committees: movies, art, music and lectures . . . Carol Williamson coordinates . . . petitions, campaign managers and speeches . . . another election and frosh get the vote. Phil Mighdoll joins the Executive Committee as class rep. and Tony Haug is the frosh prexy . . . a road sign appears . . . S.U. 62 proclaimed at intersection of Planting Fields and Glen Cove Roads.



Who's dragging his feet?



Frosh Officers . . . Left to Right: Joel Panagakos, Audrey Hopkin, Phil Mighdoll, Tony Haug, Ken Campbell.





October 31, it's Halloween . . . .  
 spooks, witches and roly poly clowns  
 . . . . with pillows yet . . . . Mel  
 Morris with turban and bass . . . .  
 cider and donuts . . . . a thorough-  
 bred takes the prize . . . . strange  
 noises in the woods . . . . Cross  
 Country begins under Jim Donady,  
 student coach . . . . Frosh come out  
 in quality and quantity . . . . upper  
 classmen don't . . . . two wins in  
 four tries . . . . Queens and Adelphi  
 bow to State . . . . Farmingdale and  
 Post don't follow suit . . . . Al  
 Roecklein forms an "ad hoc" soccer  
 team . . . . Post shut out . . . . our  
 glory extinguished in the rematch  
 and soccer fades . . . . fades . . . .  
 fades . . . . Curtain 'n Canvas re-  
 vamps organization . . . . student  
 leaders start off program with a  
 trip to the Guggenheim Museum's  
 front steps . . . . Flag Football  
 starts another season . . . . Miss  
 Nightingale, nee Verricchio, finds  
 business on the upswing . . . . New-  
 tonians, Platonists, Freudians, Aris-  
 totelians . . . . even sports goes  
 intellectual . . . . Eric Knuffke . . . .  
 "man with the iron jaw"



Coach shows them how.





2nd Annual . . . .

December . . . . J.S.O. constitution approved . . . . new club led by Mel Reich . . . . Art Committee, under Marylou Lionells, presents first exhibit . . . . "Modern Masters" of Graphic Arts . . . . East Norwich gym invaded . . . . intramural basketball program gets started . . . . big teams become small teams . . . . certain spectators invited to stay out . . . . and finally everyone (including players) receive similar invitations . . . . Varsity and Jay Vee basketball for those not on pro . . . . teams small in number . . . . high school faculties improve . . . . varsity loses all games . . . . Jay Vee salvages two out of four . . . . Pat Barry plays interesting games against Smithtown's #14 . . . . and State experiences co-ed basketball . . . . religious groups prepare 2nd Annual Christmas Ball? . . . . 1st Annual Holiday Hop? . . . . 1st Annual Winter Ball? . . . . Executive Committee intervenes . . . . 1st Annual Yuletide Ball!! . . . . students of all faiths cooperate to decorate a tree in the Coe Hall lobby . . . . carols everywhere . . . . Santa brings a 20-foot sailboat to the lobby for Dean Austill . . . . it remains for weeks . . . . Dec. 17th . . . . party day . . . . Handel's "Messiah" . . . . on records . . . . choral concert . . . . their third . . . . strawberry punch . . . . visit from Santa Loy.



Those ARE pillows



Isn't this carrying this Sadie Hawkins business pretty far?



Big money winner.

December 18th . . . . Executive Committee, under George May, presents the Yuletide Ball . . . . 130 couples fill the Great Hall and Coffee Shop . . . . music by an excitingly new instrumental group . . . . Mel Morris' band . . . . Glen Cove Hospital gets proceeds for mental health . . . . Saturday . . . . last day of classes . . . . unattended . . . . vacation roars by . . . . preparations started for Stony Brook . . . . architect's model for campus on display after Jan. 7 . . . . the curious attracted . . . . semester exams again . . . . the usual cramming, the usual decrease in size of the student body . . . . first student art contest . . . . 3 faculty judge painting, sculpture, photography and "other" . . . . \$125 in prizes . . . . Meteorological Society approved . . . . potential weathermen . . . . Feb 20 . . . . it's girl-ask-boy-time . . . . J.S.O. hold "Sadie Hawkins" Dance . . . . guys like the idea—it's cheap . . . . Feb. 22 . . . . first open house for prospective frosh . . . . Biology display steals the show . . . . we have a day off . . . . Bob Wallen declared pingpong champ . . . . chess tournament takes hold . . . . March 3 . . . . a record snowfall . . . . 2 1/2 days of classes cancelled . . . . dorm students have special showing of movie, a song fest and marshmallow roast in Coe Hall . . . . "Let it snow, let it snow" . . . . a sculptured snow body appears . . . . Mr. Rasof's car peeks out of mysterious snow drift . . . . dorm students help a '51 Dodge "roll" into the field . . . . tray sliding becomes a favorite sport . . . . \$256.00 for trays?



Spring thaw



Looks like a freshman.

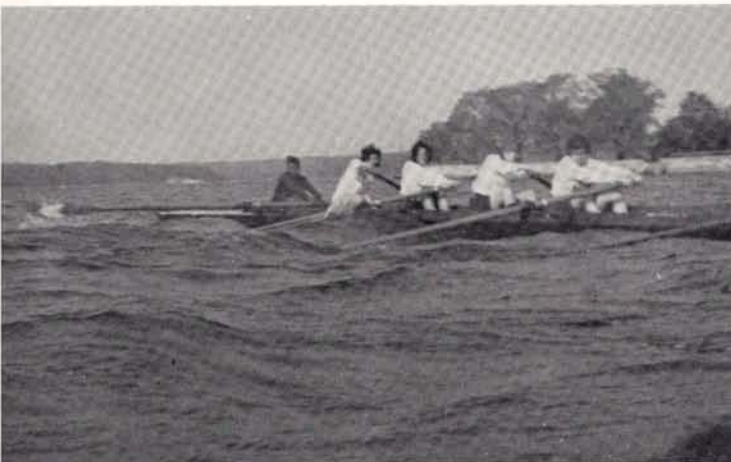
March 17 . . . . St. Pat's party . . . . soda and square dance records . . . . Gene Dailey becomes 5th editor of the Statesman . . . . formation of another Math Club proposed . . . . democracy is at work—Ad Hoc Political Action Group pickets various stores as a protest against segregation . . . . pamphlets distributed and student body shows great interest . . . . but doesn't want to pay for them . . . . blue and gold become red and grey . . . . "official" official colors . . . . non-renewal of some faculty contracts arouses student interest Bowen, Fleisher, Chill . . . . Long Island newspapers sensationalize story . . . . Dean Olsen considers the non-renewals . . . . "in the best interest of the college" . . . . Crew hits water again but it hits back . . . . freshmen go for a cold evening swim . . . . Oyster Bay fishermen rush to the scene . . . . town turns out . . . . spot lights on the water and an escorted ambulance to Meadowbrook . . . . practice cancelled . . . . age of the "shore observer" . . . . the dime-laden envelope . . . . two life guards in the coach boat . . . . it must accommodate 10 . . . . Executive Committee buys a small yacht . . . . cracked Italian shell finally gets wet . . . . 5 months late . . . . April 2 . . . . dance held to raise funds for crew trip to Dad Vail Regatta in Philadelphia . . . . Bart Haigh gives a hand . . . . crew membership at all time low . . . . so dorm girls form first female crew at State . . . .



Political Action in action.



But, Mr. Borghard . . . .



"This beats dieting."



Campaigning, Mr. Rockefeller?



A silver spoon . . . out of his mouth into his hand.

April 8 . . . ground breaking at Stony Brook . . . Governor Rockefeller with a silver spade . . . Ro Capone tells of already existing student body . . . crowd surprised . . . "What is she talking about?" . . . sophs challenge freshmen to field events . . . juniors insulted . . . demand a late invitation . . . Mel Morris runs a lonely mile . . . juniors score an upset win . . . "must have been those long, long, hours of practice" . . . another triumph over C. W. Post . . . softball's the game . . . faculty umpire . . . then faculty vs. students . . . "Where is the damn thing?" . . . "first base is 30 ft. to your right, Mr. Sternfeld" . . . students win once more . . . April 9 . . . DHRR arrives again . . . April 20 . . . 200 faculty and students hear radio novelist Jean Shepard speak . . . letter from President Hamilton in STATESMAN . . . no B.A. this year . . . many students advised to transfer . . . Albany catalogs gone in one day.

Politicians, newspapers and citizens go wild . . . beatnik poem brings the College to the attention of Congress . . . "A Coney Island of the Mind #5" . . . are we anti-Christian? . . . the fingers are pointed at Mr. Rodin . . . faculty member defended by students and administration . . . academic freedom becomes a popular topic . . . Yearbook and Ring Committee begins to function under Jim Donady . . . companies send representatives . . . simple or symbolic ring?



Specula "wins" the basement office.



"But we don't know how it got here, Mr. Rodin"

Men's Dorm students attempt to give the Crew shell a new setting . . . . April 30 . . . . 80 see "A Winter's Tale" on C. and C. trip to Stratford's Shakespeare Festival . . . one bus gets lost on the way back . . . arrives on campus 3 A.M. . . . May 6 . . . polity and class elections for 1960-61 . . . questions on current issues answered by candidates in the STATESMAN . . . the winners: Ro Capone, Moderator; Connie McCormack, Corresponding Secretary; Ann Meilinger, Recording Secretary; Mel Reich, Treasurer; Phil Mighdoll, Soph. Pres.; Amy Aronson, Soph. Representative; Fred Schubert and Carol Williamson for the juniors; Ed Farnworth, Senior Class Representative . . . senior class presidential election ends in tie . . . a new election and George May reelected to preside over the 62 who are left . . . mud sea reappears . . . students walk the plank . . . repairing behind Coe Hall but mud remains . . . C. and C. sponsors Actor's Repertory Group in "The Adding Machine" . . . the gym is the theater . . . May 15 . . . 3rd Annual Open House . . . hundreds tour grounds and hear chorus concert . . . Dad Vail Regatta . . . State U. wins a distinction . . . the only crew not to come in last when participating for the first time . . . Exams again . . . the agonizing comps . . . June 3 . . . Freshmen sponsor spring formal . . . "Une Soiree du Printemps" . . . M.M.'s band . . . colored spotlights on the fountains . . . coffee shop and Great Hall in candlelight and acres of chiffon.



"Now what about the roads that need it"

"Une Soiree du Printemps" . . . Faculty joins in.



Mel's Patty . . . the Crew mascot.





. . . Summer 1960 . . . a new name, State University of N. Y.—Long  
 Island Center . . . August . . . senior biology majors take first regular sum-  
 mer course . . . required, of course . . . Ecology . . . Mr. Gilbert . . . cut-  
 ting down trees, counting blueberries, fleeing from bees . . . "who has the  
 poison ivy lotion?" . . . soil tests and temperature at 11 p.m., 200-  
 page final reports . . . 8 hours a day . . . the Annex is home for 6  
 . . . the rain comes . . . a flood in Butler . . . ecology students  
 turn janitors . . . spend exhausting, expensive six weeks . . . It was  
 Hell!



Only 834 more readings . . . for today.



*1960-1961*



ABOVE—Left to Right, Front Row: Kathy Buckley, Marie DeNigris, Mary Dawe, Grace Fukuhara, Barbara Andrew, Monica Findeis, Elaine Bartlett, Diane Biedenbach. Second Row: Gary Ackerman, Fred Berlack, Mike Aquilino, Carl Baron, Ed Baltzersen, Harvey Factor, Mike Duffy, Mary Fedorys.



## *Class of '64*

BELOW—Left to Right, Front Row: Linda Ferrari, Sandy Arns, Ruthann Brody, Linda Dear, Margie Cleary, Linda Bliden, Lucy Adinolfi, Valerie Furst, Susan Arnio. Second Row: Flo Friedman, Joan Friedman, Steve Auerbach, Mike Field, Georgie Barber, Tim Chichester, Fred Chernomas.





**ABOVE—Left to Right, Front Row:** Ronnie Goldstein, Joan Koeper, Daryl Meltzer, Arlene Levy, Joan Masterson, Eileen Hickey, Pat Mucciolo, Lilette Levy, Jane Gilbert, Lynne Geed, Judy Juner, Diane Hoffman, Linda Hurwitz, Judy Intrator, Phyllis Hauben, Fran Luciano, Janet Hæeffner. **Second Row:** Barbara Martin, Kathy McDonald, Marian Handelman, Pat Lewandowski, Edwin McCullough, Charlie Mindel, Gary Murdock, Danny Mierswa, Tim Loughlin, Jim McLaughlin, John Krawczyk, Billy Eiffler, Tom Boyuka, Tom Castoldi. **Third Row:** Alan Mantel, Bob Hill, Mike Lypka, Kevin McCann, Tom Jones, Jim Hoffman, Doug Kern, Bill Mullady, Ray Meyer, Bob Howley, Ted Hajjar, Joe Hovanec, Ronnie Milito.

**BELOW—Left to Right, Front Row:** Phyllis Wilensky, Renee Warshofsky, Sylvia Schanz, Merrily Wade, Carol Wehrman, Barbara Smith, Eileen Rowe, Carol Robbins, Phyllis Russo, Judy Reyer, Barbara Palmer, Shelly Silverman, Frances Sheeron, Alice Paster, Marion Stein, Gail Wehner, Richie Rosenfeld. **Second Row:** Judy Slechta, Karleen Wiggard, Sue Schwemmer, Barbara Pedersen, Pat Yoli, Lorraine Sagsveen, Maddie Weiser, Judy Walk, Lenny Spivak, Jon Simplicio, Bob Stepleman, Hank Rapp, Mike Nofi, Lynne Stiles. **Third Row:** Bob Wilbarg, Jerome Trupiano, Everett Silverman, Bob Staub, Charlie Treadwell, Al Westbrook, Pedro Ortiz, Richie Schimmel, Karsten Vagner, Ed Tschabrun, Mike Tax, John Strimas, Bill Thompson, Paul Schott, Ed Wetter.





Mr. Albert Carlson



Mr. Howard Howland



Mr. Bernard Tunik



Mr. George Williams



Mr. Arthur Lepley



Mr. Robert Schneider



Mr. Arnold Feingold



Mr. Richard Glasheen

**M**onday, September 19 . . . school year begins with Orientation . . . 198 freshmen . . . we are finally a four-year college! . . . the usual rigmarole . . . pouring rain . . . soggy tours . . . afternoon seminars by major field . . . meet the faculty.

Registration . . . the two hour wait for I. D. photos . . . student activities meeting . . . the experienced ones return . . . we now have a senior class, even if there are only 46 . . . monstrous lunch lines.

Mr. Lunsford new Associate Dean . . . Mrs. Ray, women's resident head . . . 21 new faculty members . . . Biology—Carlson, Howland, Tunik, and Williams . . . Nat. Sci. II replaced by Bio. 10 . . . Nat. Sci. I finally abolished and in its place come Chem. 10 and Physics 10 . . . Chemistry—Lepley and Schneider . . . Physics—Feingold . . . Engineering—Glasheen.



Mr. Morris Bram



Mr. Donald Malm



Mr. Abram Martin

Mathematics—Bram, Malm, Martin and Miller . . . . Social Science—Gasman, Parenti, Prouty and Semmel . . . . program extended to include history, economics and political theory . . . . Languages and Humanities—Mrs. Coleman, Goodman, O'Neil and Pequigney . . . . Russian offered for the first time . . . . English I returns to replace Art and Music . . . . Seniors finally get to take the mysterious I.D.S. . . . . 16 become well-dressed part-time students, spend mornings "observing" in the high school classroom.

Many familiar faces missing, including 8 profs . . . . campus still growing . . . . engineering wing added to the Butler buildings . . . . student lounge and faculty coffee shop become classrooms . . . . STATESMAN, Polity and yearbook offices move to the annex . . . . "Recreation Hall" opened for social and athletic activities.



Mr. Russell Miller



Mr. Michael Parenti



Mr. Roger Prouty



Mr. Bernard Semmel



Mrs. Elizabeth Coleman



Mr. Donald Goodman



Mr. Daniel O'Neil



Actors Repertory Workshop

The social whirl begins as usual, a movie the first week and a square dance the second . . . established clubs greet new members . . . and look in vain for former ones . . . State Troupers revitalized through freshman effort . . . Curtain and Canvas sponsors an evening with the Royal Ballet . . . on film . . . Actors Repertory Workshop comes to campus with "The Skin of Our Teeth" . . . Newman Club presents the third annual Halloween Dance . . . "Before and After Cinderella" steals the show . . . George May and Marylou Lionells work on ring design as seniors visit Balfour plant . . . Crew practice underway . . . flag football also . . . cross country schedule canceled . . . no interest . . . Miss Masucci initiates program for girls . . . Council for Political Inquiry established under Al Roecklein . . . debates and guest speakers planned . . . work on Stony Brook campus proceeds rapidly . . . Academic Standing Committee announces new requirements for good standing

. . . wide spread panic . . . student body decreases . . . Executive Committee sponsors a concert by Theodore Ullman . . . Mr. Parenti speaks on "Party Structure and American Politics" in debate with political party representatives . . . Ring Committee recommends the College ring design . . . approved but the stone cut is petitioned . . . Freshman Class elections . . . lollipops, motorcades and campaign matches . . . Ted Hajjar becomes President, Mike Nofi elected Class Representative . . . "Our Id" hits the campus . . . signs and cafeteria trays disappear . . . Parking Lot C mysteriously closed "for repairs" . . . Men's dorm invaded by the girls . . . party raid? . . . rival college decorates our fire hydrants . . . with polka dots . . . the Instrumental Group gives its first concert . . . student teachers begin teaching . . . Mr. Rosenberg and Mr. Gardner take over the observing . . . S.C.A.'s "Turkey Trot" is a howling "success."



Stony Brook construction ahead of schedule . . . miracles never cease.



Where are the recorders?

Physical Society forms . . . . Curtain and Canvas trip to "West Side Story" creates controversy . . . . too few tickets, too much money . . . . Movie Committee keeps Friday nights filled . . . . movies often shown on TV several weeks later . . . . Actors Repertory Workshop returns with "The Imaginary Invalid" by Moliere . . . Polity meeting called to decide the stone cut for the ring . . . . no quorum . . . . no decision . . . . State Troupers formally approved . . . . George Barber is President . . . . Nassau Community College, Webb Institute, Adelphi, St. Johns and Queens Community suddenly lose their banners and signs . . . . they mysteriously appear at noon in the cafeteria . . . . Mr. David Farrell coaches the basketball team—the Soundsmen . . . . we lose our first game to Staten Island . . . . visions of the past and future.



We should have gotten the unbreakable ones.



First a car . . . . then a boat . . . . and now . . . .

Christmas vacation near . . . . heavy snowfalls . . . . the traditional Christmas tree is decorated in Coe Hall Foyer . . . . trees also in the cafeteria and Great Hall . . . . Dean Austill's boat and Mr. Rodin's car stay put but a tradition lives on . . . . the upperclassmen do it again . . . . Coe Hall Foyer has a sleigh and gifts . . . . and Santa Claus . . . . in a rather unusual setting . . . . Jim Donady resigns from yearbook and ring committees . . . . George May takes over . . . . staff begins rush to meet the January 1 deadline.



Couldn't you wait, Santa?



"Don't look at the music, look at me."

The Senior Board plans a dinner dance at the Thatched Cottage for seniors . . . only Senior Board members buy tickets . . . no dance . . . the Executive Committee runs toy drive for neglected youngsters . . . gifts pour in . . . the fourth annual Christmas party . . . College Chorus gives its fifth concert . . . Slater provides an "unusual treat" after the party . . . strawberry punch and cookies . . . the coffee shop overflows . . . last day of classes canceled because of snow . . . Second Annual Yuletide Ball still a success . . . Newman Club, S.C.A. and J.S.O. sponsor it this year . . . music by Mel Morris . . . a needed two-week vacation begins.



"Carol of the Bells" . . . again?



Eager students rush for the goodies.





The late Mrs. Coe's house.

On the less social side . . . Dr. Thomas Irvine appointed Dean of the Engineering School . . . sad news of Mrs. Coe's death . . . the big question on campus . . . "What will happen to the white house?" . . . Heald Report issued . . . tuition for all State schools . . . encouraging words for the senior social science and humanities majors . . . there will be a liberal arts program . . . someday . . . newly appointed President of the Long Island Center, John F. Lee, arrives . . . moves into Mrs. Coe's house . . . the heat is on . . . pre-exam exodus . . . student teachers spend free mornings catching up . . . seniors complain that I.D.S. is still a mystery . . . semester exams!

Classes resume . . . speculation about commencement begins . . . 35 seniors have portraits taken . . . classes held in men's lounge and Dean Olsen's office . . . many profs change courses and sections . . . faculty research grants announced . . . Dr. Kramer receives \$13,000 to study pigeons . . . Dr. Ramirez and research team from India, Sweden, Israel and Japan engaged in study of phosphorus . . . Carlson also receives a grant as do Lepley, Schneider, Levin and Semmel . . . Science faculties continue series of seminars in biology, chemistry and physics . . . Mrs. Daskin joins the Chemistry Department as Assistant Instructor.



Dr. Ramirez and his assistants.



"And this bus is staying in the city for dinner."



So what . . . Webb is older than us.

STATESMAN vanishes from the college scene . . . editor trouble . . . they can't stay off probation . . . basketball closes the season with a perfect record . . . crew practice begins again . . . the girls defeat Nassau Community in volleyball . . . new clubs established . . . Astronomical Society under Bob Victor and Chemical Society directed by Leo Zafonte . . . Curtain and Canvas offers Carnegie Hall concerts, "Hedda Gabler" . . . STATESMAN reappears for the first time since Christmas . . . March 8 . . . bridge team defeats Post and Hofstra . . . class and club yearbook photos taken in frigid weather . . . mass cutting . . . with a reason . . . Biology Department becomes Division of Biological Sciences.



State tops Hofstra in bridge match.



"Senior Dance" at the Golden Slipper.



J.S.O. presents the second annual Sadie Hawkins Dance . . . . Golden Slipper in Glen Cove scene of first Senior Class Dance and the first college dance held off-campus . . . . April Fool issue of the STATESMAN creates quite a stir . . . . some students begin plans for move to Stony Brook . . . . annual trip to the American Shakespeare Festival at Stratford . . . . this year, "Twelfth Night" . . . . Special issue of the STATESMAN . . . . B.A. degree approved for Sept. . . . . March 24 declared "University Day" . . . . rings go on display . . . . University holds annual Open House for next year's frosh . . . . Paul Goodman speaks on "Culture, Anarchy and Science" . . . . Council for Political Inquiry presents "Sounds of Protest" and "Operation Abolition" . . . . storm of discussion follows . . . . trip to "Hamlet" sponsored by Humanities Division.



Stratford Shakespeare Festival.



Fort Schuyler Glee Club



30

HERE I AM  
A SENIOR AND  
THEY STILL WON'T  
TELL ME WHO  
THIS GUY ARISTOTLE  
IS



State U. gets a well

Fort Schuyler Glee Club gives concert . . . . Mr. Erk encouraged . . . . frosh class to number 250 next year . . . . construction of geodesic domes announced to accommodate the invasion . . . . Stony Brook well on the way with 5 buildings going up . . . . seniors busy with plans for next year . . . . medical school, teaching, graduate work and industry . . . . many foresee another year at Oyster Bay . . . . humanities and social science majors find they will get a B.S. instead of a B.A. for this year . . . . exam schedule announced . . . . seniors have exams crammed into the first week without a breather. . . . new well sunk beside Coe Hall to provide water for the school. . . . stone of the University ring finally goes to a vote . . . . faceted by a narrow margin . . . . controversy and petitions . . . . a new vote and the stone cut is optional . . . . campaigning begins for next year . . . . no candidates for some offices . . . . several candidates unopposed . . . . interest focused on contest for Moderator . . . . Mel Reich accused of incompetence as Treasurer this year . . . . returns with pamphlets criticizing his opponent the day before elections . . . . heat in the campaign builds . . . . George May's "Sub-Deacons" appear on the bulletin board . . . . senior feelings about their four years and the countdown to commencement . . . . Carol Williamson elected Moderator; Pat Glenn, Barbara Englert and Connie McCormack become Polity officers . . . . class officers also elected . . . . State has its first crew win of the year as J. V. takes Clark . . . . Dad Vail not so successful . . . . news released that the Honor Society will not be established this year . . . . seniors comment—"They did it to us again."



22

EVER GET THAT  
OLD FEELING?



Senior biology majors before the seminars.



"But we could rent polo ponies"

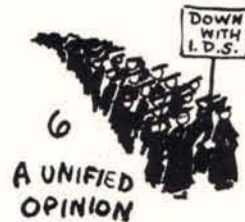


...BUT I REALLY  
THOUGHT CLASSES  
WERE OPTIONAL.

Senior biology majors give seminars on research before faculty and students . . . Marv Rosenberg and George May take top prizes in painting division of Annual Art Contest . . . Les Paldy, Bruce Gallagher and Al Shuttleworth in photography . . . Marylou Lionells in sculpture . . . bridge team has undefeated year . . . State Troupers begin casting for next year . . . exams rapidly approaching . . . speculation on the number of graduates mounts . . . intercollegiate sports a major controversy . . . first successful Polity Meeting called . . . 263 students argue the pros and cons . . . the budget is approved . . . announcement of summer practice teaching and methods for senior soc. and humanities majors . . . Sophomore Challenge has its second year . . . Class of '61 again victorious . . . Faculty play the seniors in softball . . . the "old men" lose and seniors keep their crown . . . exams begin . . . seniors sit tight as final grades begin rolling in . . . Marylou Lionells throws a senior party . . . and everyone comes . . . faculty recommends 25 for the degree . . . preparations for the Spring Formal near completion . . . the hiring and firing of Mel Morris' band by frosh creates quite a stir . . . frosh cry "monopoly" . . . "good entertainment" is the other view.



Class of '61 All-Stars . . . Sophomore Challenge.





Class of '64 throws the fourth annual Spring Formal . . . . Lightning brightens the sky but the rain stays away . . . . three bands . . . . floral motif in Great Hall and Coffee Shop but everyone stays outside . . . . fountains glow under colored lights . . . . combo in the Italian Gardens is the main attraction . . . . underclassmen say good-bye for the summer . . . . graduation rehearsal on Saturday . . . . prayers for good weather . . . . seniors finally get their class rings . . . . Dean Austill's barbecue later . . . . sentimentality reigns supreme as four years draw to a close.

*student organizations 1961*

## *Executive Committee of the Student Polity*



### **Officers**

Rosemarie Capone (Moderator), Mel Reich (Treasurer), Cornelia McCormack (Corr. Secretary), Ann Meilinger (Rec. Secretary).



### **Class Presidents**

Fred Schubert ('62), Phil Mighdoll ('63), George May ('61), Ted Hajjar ('64).



**Moderator**  
Rosemarie Capone



### **Class Representatives**

Amy Aronson ('63), Mike Nofi ('64), Ed Farnworth ('61), Carol Williamson ('62).





**Coordinator**  
Carol Williamson

**Art**

**Front Row:** Linda Dear, Judy Slechta. **Second Row:** Barbara Englert, Marylou Lionells.



**Music**  
Carl Baron

**Lectures**  
Maddie Fischer



**Movies**  
Doug Hlinka, John Unrath.

*Cultural  
Subcommittees*

## *Orientation Board*

**Left to Right, Front Row:** Amy Aronson, Nancy Nevole, Marylou Lionells. **Second Row:** Mike Cruty, Mel Reich, Marvin Rosenberg, Ronnie Warmbier, George May (Chairman).



## *Election Board*

**Left to Right:** Tod Fowler, Doug Hlinka (Chairman), Lois Ginsberg.





## Chorus

Left to Right, Front Row: Dr. Frank Erk (Director), Margaret Weaner, Pat Mucciolo, Monica Findeis, Eileen Hickey, Burt Marks, George Barber, Gordon Little, Maddie Weiser, Audrey Hopkins, Hildegard Kurnol, Donna Little (Accompanist). Second Row: Charlotte Dahlstrom, Lana Shearer, Phyllis Russo, Mike Nofi, George May, Glenn Sharrock, Judy Intrator, Fran Luciano, Nita Mosquera. Third Row: Merrily Waide, Barbara Polivy, Margot Fuhrman, Judy Farley, Tony Haug, Steve Auerbach, Art Whalen, Bob Kiesling, Susan Arnio, Muriel Benter, Ginny Nelson. Fourth Row: Sylvia Schanz, Roberta (Clyde) McCullough, Mary Jayne Jennerich, Brian Kiefer, Victor Neuwirth, Bruce Gallagher, Jim Pecoraro, Ann Kurz, Eleanor Maxwell, Judy Stout.

## Instrumental Group



Left to Right: Lois Ginsberg, Judy Intrator, Carl Baron, Burt Marks, Mr. Issac Nemiroff (Director), Tom Jones, Ruthann Brody, Steve Auerbach, Richard Fowber, Bob Hill.



**First Row (L. to R.):** Ann Salidino, Madeline Fischer, Rubymae Leonhardt, Alice Paster, Barbara Polivy, Arlene Jacobs, Margot Fuhrman, Lynne Geed, Shelly Silverman, Linda Dear, Phyllis Hauben, Maddy Weiser, Judy Farley. **Second Row:** Danny Mierswa, Burt Marks, Mike Nofi, Lois Ginsberg, Marylou Lionells, Judy Sheppes, Steve Zemsky, Marion Handleman, Linda Hurwitz, Judy Intrator, Everett Silverman, Marion Eisenstein, Murial Benter, Mr. Edward Fiess (Advisor). **Third Row:** Dave Buckhout, Ronnie Milito, Marty Frank, Warren Hlinka, Connie McCormack, George May, Steve Heller, Gene Dailey, Jack Mattice, Mike Davidson, Joe O'Carroll, Tod Fowler, Karl Mamola.



## STATESMAN

**L. to R.:** Jack Mattice (Sports Editor), Judy Sheppes (Associate Editor), Marylou Lionells (Copy Editor), Lois Ginsberg (Editor-in-Chief), Arlene Jacobs (Business Manager).

# *specula*

**Standing (L. to R.):** Pat Mucciolo (Editor 1960-61), Mary Federoff (Editor 1958-59).  
**Seated:** George May (Coordinating and Layout Editor), Barbara Englert (Editor 1959-60), Marylou Lionells (Editor 1957-58).



**First Row (L. to R.):** Lee Ann Harris, Arlene Levy, Ann Meilinger, Barbara Palmer, Barbara Kozakiewicz, Pat Mucciolo, Mary Federoff, Mr. Thomas Rogers (Advisor). **Second Row:** Judy Slechta, Valerie Furst, Lynne DaSilva, Marylou Lionells, Barbara Englert, Barbara Else, Mathilda Haefele, Ginny Nelson, Betty Egan, Jeanne MacDonald. **Third Row:** Joan Monks, Mel Morris, Tod Fowler, Ray Meyer, George May, Mike Davidson, Bruce Gallagher.





## *Student Christian Association*

**First Row (L. to R.):** Carol Okvist, Marie Schachtschneider, Grace Fukuhara, Merrily Waide, Audrey Hopkin, Elaine Bartlett, Judy Farley, Carol Berggren. **Second Row:** Gary Murdock, Victor Neuwirth, Virginia Nelson, Muriel Benter, George Barber. **Third Row:** Glenn Sharrock, Bruce Gallagher, Brian Kiefer, Phillip Hirsha.

**First Row (L. to R.):** Joyce Pytell, Betty Egan, Mary Ann Huck, Nancy Yevcheck, Barbara Andrew, Jeanne MacDonald, Kathy Greene, Margot Fuhrman, Annette Marchese, Diane Biedenbach, Diane Hoffman, Janet Haeffner, Pat Lewandowski. **Second Row:** Phyllis Russo, Kathy McDonald, Caryl Sullivan, Barbara Campion, Abby MacDonald, Bill Kropac, Dan Mierswa, Mike Nofi, Bob Hill, John Depew, Bill Muller. **Third Row:** Warren Hlinka, Joseph Havanec, George May, Tod Fowler, Tony Haug, Bob Kiesling, Karl Mamola.

## *Newman Club*



# Council for Political Inquiry



**First Row (L. to R.):** Maddy Fischer, Vivian Mecksin, Judy Slechta, Sarah Liebowitz, Al Roecklein, Ken Lonske. **Second Row:** Marylou Lionells, Fred Schubert, Jim Kelly, Mike Davidson, Hank Liers, Mr. Donald Goodman (Advisor).

# Jewish Student Organization

**First Row (L. to R.):** Phyllis Wilenski, Daryl Meltzer, Alice Paster, Barbara Polivy, Arlene Jacobs, Carol Robbins, Jane Gilbert, Phyllis Hauben, Linda Hurwitz, Maddy Weiser, Judy Intrator. **Second Row:** Martin Meltz, Burt Marks, Steve Zemsky, Richard Towber, Everett Silverman, Gerry Goldstein, Jerry Gilbert, Dennis Golin, Mel Reich, Marty Frank, Bob Raffelock.





## State Troupers

**First Row (L. to R.):** George Barber (Chairman), Merrily Waide, Phyllis Hauben, Mike Tax. **Second Row:** Carol Wehrman, Daryl Meltzer, Tony Haug, Bob Stepleman, Carol Robbins, Danny Mierswa, Phyllis Wilenski. **Third Row:** Judy Farley, Maddie Weiser, Everett Silverman, Steve Barnett, Mike Nofi, Dick Blumhagen, Glenn Sharrock.



## Chemical Society

**Standing:** Joe Hovanec, Tom Jones, Dick Blumhagen, Fred Fritz, Roger Renke, Steve Heller. **Seated:** Caroline Mayo, John Krawczyk, Jane Gilbert, Lynne Geed, Shelley Silverman.





## Curtain and Canvas

First Row (L. to R.): Grace Fukuhara, Lucy Adinolfi, Judy Farley.  
Second Row: Pat Mucciolo, Carol Wehrman, Phyllis Hauben, Mike Nofi, Glenn Sharrock, Gene Dailey.



## Physical Society

Standing: Robert Stepleman, Peter Zimmer, Bill Pettingill, Eric Kadel, Steve Heller, Bill Margulies, Charlie Norwood, Brian Kiefer, Bob Staub, Bill Thompson, Dick Blumhagen. Seated: Jeff Barr, Jeffrey Raskin, Linda Bleeker, Norman Wixon, Bill Muller, Barbara Campion, Mike Cruty (President), Bill Kropac, Karl Mamola.

## Astronomical Society

Seated (L. to R.): Warren Hlinka, Bob Victor (President), Peter Zimmer. Standing: Linda Bleeker, Barbara Campion, Bill Pettingill, Carl Baron, Larry Dawson, Grace Fukuhara.





## Women's Dormitory Board

First Row (L. to R.): Florence Hershberger (President), Linda Bliden, Carol Williamson. Second Row: Linda Dear, Lois Ginsberg, Marylou Lionells, Marion Eisenstein.



## Men's Dormitory Board

*Fall*

(L. to R.): Bob Kiesling, Bob Victor (President), Eric Knuffke, Mel Reich, Mel Morris.



*Spring*

Standing (L. to R.): Gerry Goldstein (President), Jack Mattice, Harry Waitz, Steven Heller, Bill Margulies. Kneeling: Joel Bergman.



L. to R.: Herb Jamison, Jack Mattice, Warren Hlinka, Douglas Hlinka, Bruce Gallagher, John Lussi, Ed Beuel, Frank Carr, Ed Farnworth, Ronnie Warmbier, Gordon Little.

## *Track and Field*



# Basketball

## Varsity

(L. to R.): Marv Rosenberg, Jack Mattice, Tom Boyuka, Frank Carr, Charlie Tebbe, Hank Liers, Doug Milne, Ed Beuel, Joe O'Carroll, Bill Eiffler.



## J. V.

(L. to R.): Ed Farnworth, Warren Hlinka, Tom Castoldi, Ed Wetter, Jerry Gilbert.



## Crew



### Varsity

(L. to R.): Ken Campbell, Tony Haug,  
Ken Lotter, Warren Engelke, Mike David-  
son, Frank Carr, Bill Margulies, Gordon  
Little.





## *J. V.*

(L. to R.): Tom Castoldi, Doug Kern,  
Peter Zimmer, Bill Pettingill, Carl Baron,  
Lenny Spivak.



## Senior Board



Left to Right, Front Row: George May (President), Nancy Nevole.  
Second Row: Marylou Lionells (Secretary), Jesse Nicholson, Doug  
Hlinka. Absent—Delores Baker (Treasurer).



*graduates and commencement 1961*



**Delores Baker**  
B.S. Physics



**Kathleen Barrett**  
B.S. Biology



**Diane Bogardus**  
B.S. Social Science

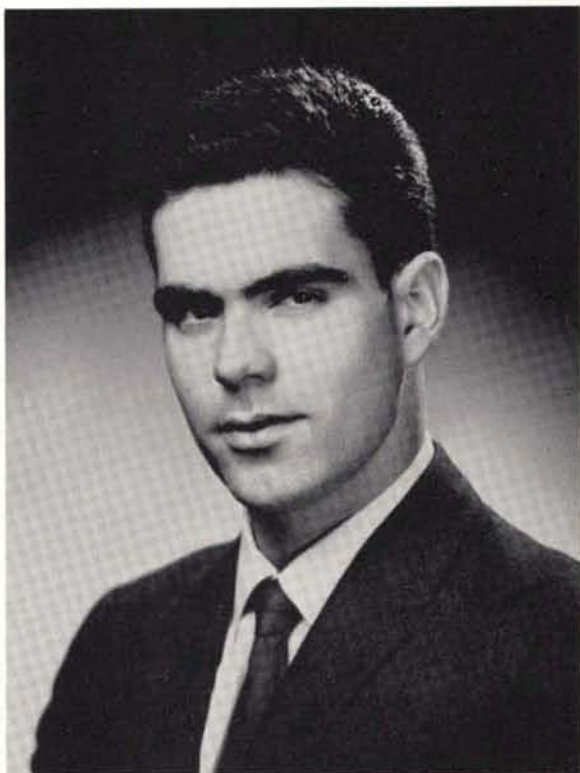
Gail Bolz  
B.S. Humanities



Rosemarie Capone  
B.S. Mathematics



Frank Carr  
B.S. Physics





Marie Collins  
B.S. Chemistry

Patrick Crean  
B.S. Chemistry



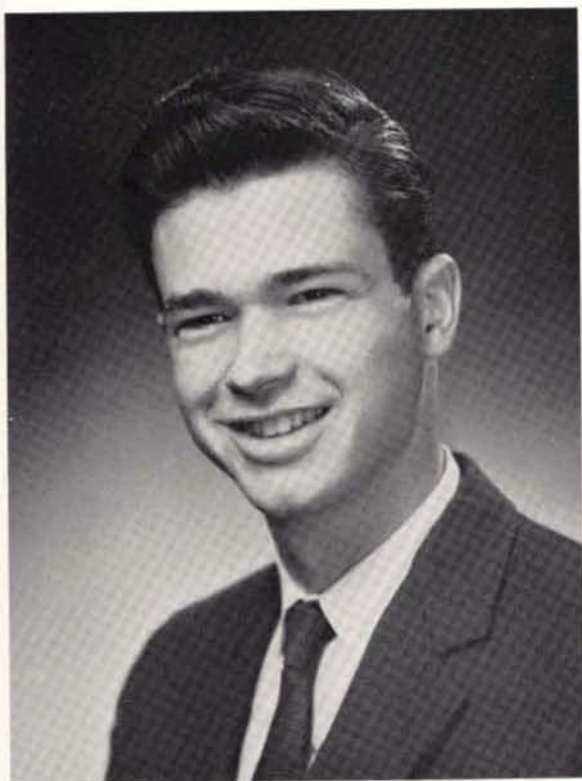
Patricia Cullen  
B.S. Social Science



June Dawson  
B.S. Biology



William Hahl  
B.S. Mathematics



Douglas Hlinka  
B.S. Biology





Marie Hoff  
B.S. Humanities



Hildegard Kurnol  
B.S. Mathematics



Marylou Lionells  
B.S. Biology

Gordon Little  
B.S. Humanities



Cecelia Maiwald  
B.S. Social Science



George May  
B.S. Biology





Nancy Nevole  
B.S. Biology



Jesse Nicholson  
B.S. Chemistry



Carl Schulz  
B.S. Physics



**Robert Victor**  
B.S. Physics

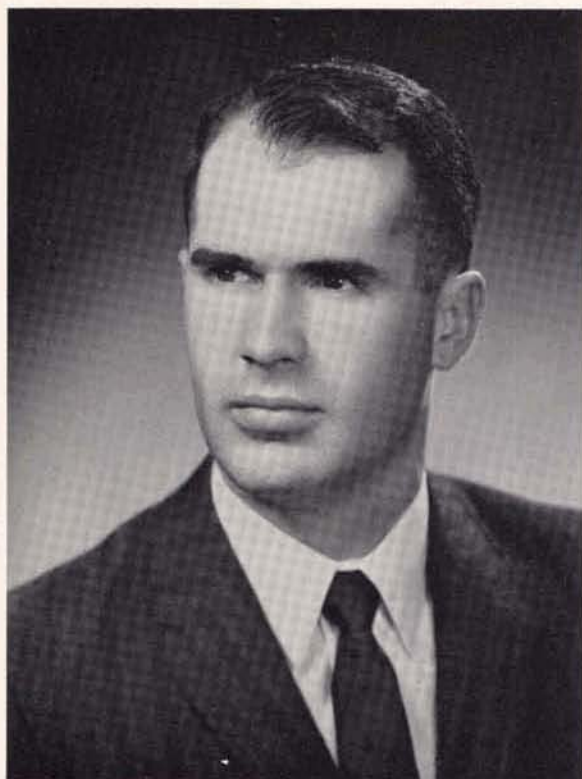


**Robert Walker**  
B.S. Social Science



**Ronald Warmbier**  
B.S. Social Science





Donald Wilson  
B.S. Mathematics



# Senior Class Activities

## DELORES BAKER

Dean's List 4; Class Treasurer 4; Senior Board 4; Chorus 1, 2, 4; Newman Club 3, Secretary 1, 2.

## KATHLEEN BARRETT

Chorus 1; Newman Club 1; Beta Phi 1, 2.

## DIANE BOGARDUS

Dean's List 3; Beta Phi 1, 2.

## GAIL BOLZ

Newman Club 1.

## ROSEMARIE CAPONE

Ward Melville Valedictory Award 4; Dean's List 3, 4; Moderator of the Student Polity 3, 4; Class President 2; STATESMAN Social Editor 1; Student Safety Committee 3, 4; Math. Club 1; Political Inquiry 4; Beta Phi 1, 2.

## FRANK CARR

STATESMAN 1, 2, 3, 4; Newman Club Vice-President 1, Treasurer 2; Math. Club 1; Political Inquiry 4; Christmas Entertainment 2; Dorm. Board President 2; Basketball 1, 2, 3, 4; Crew 2, 3, 4; Track 4; Intramurals 1, 2, 3, 4.

## MARIE COLLINS

Chorus 1.

## PATRICK CREAN

STATESMAN Sports Editor 1, 2; Dorm. Board President 3; Basketball 1, 2; Crew 2, 3; Intramurals 1, 2, 3, 4.

## PATRICIA CULLEN

Newman Club 1, 2; State Troupers 1.

## JUNE DAWSON

STATESMAN 1, 2, 3.

## WILLIAM HAHL

Math. Club 3.

## DOUGLAS HLINKA

Class Representative 3; Senior Board 4; Election Board Chairman 4; Movie Committee 3, Chairman 4; SPECULA 3; STATESMAN 1, 2, Associate Editor 3; Newman Club 4; Christmas Entertainment 3; Basketball 3; Intramurals 1, 2, 3, 4.

## MARIE HOFF

Dean's List 4; Chorus 1, 4; Newman Club 1, 2.

## HILDEGARDE KURNOL

Chorus 1, 2, 4; Math. Club 3; Christmas Entertainment 2, 3.

## MARYLOU LIONELLS

Dean's List 3, 4; Class Secretary 2, 4; Senior Board 4; Orientation Board 2, 4; Art Committee 4, Chairman 3; SPECULA 3, Senior Editor 4; STATESMAN 1, Editor-in-Chief 2, Copy Editor 3, 4; State Troupers 1; Political Inquiry 4; Math. Club 1; Christmas Entertainment 1; Beta Phi 2, President 1; Dorm Board 3; Public Relations Officer 2, 4.

## GORDON LITTLE

Chorus 1, 2, 4, President 3; Kappa Sigma Pi 1, 2; Crew Captain 2, 3, 4; Intramurals 3, 4.

## CECELIA MAIWALD

Dean's List 3, 4.

## GEORGE MAY

Dean's List 3; Class President 3, 4; Senior Board 4; Orientation Board 2, Chairman 3, 4; Election Board 2; Movie Committee 3; Chorus 1, 2, 3, 4; SPECULA 3, Layout and Coordinating Editor 4; STATESMAN 3, 4; Art Editor 1, Art and Photography Editor 2; Student Safety Committee 3, 4; Newman Club 3, 4; President 1, 2; State Troupers 1; Christmas Entertainment 2, 4; Kappa Sigma Pi Chaplain 1.

## NANCY NEVOLE

Dean's List 3, 4; Class Vice-President 3; Senior Board 4; Orientation Board 3, 4; SPECULA 3; STATESMAN 2, Feature Editor 1; Newman Club 1, 2; State Troupers Secretary 1, President 2; Christmas Entertainment 2, Chairman 1; Beta Phi 1, 2.

## JESSE NICHOLSON

Dean's List 3, 4; Senior Board 4; Election Board 3; Intramurals 1, 3.

## CARL SCHULZ

Political Inquiry 4; Intramurals 3, 4. (Transferred September, 1959)

## ROBERT VICTOR

STATESMAN 3, 4; Astronomical Society President 4; Dorm. Board Secretary-Treasurer 3, President 4.

## RONALD WARMBIER

Dean's List 4; Class Secretary 3; Orientation Board 2, 3, 4; Dorm. Board Secretary-Treasurer 2; Crew 2, 3, 4; Intramurals 1, 2, 3, 4.

## DONALD WILSON

Math. Club 3; Track 3, 4; Intramurals 3, 4. (Transferred September, 1958)



Sunday, June 4 . . . . a hot, humid day . . . . 1:30 p.m. . . . cars begin streaming into the campus . . . . chorus members gather in the Coffee Shop to rehearse . . . . seniors and faculty arrive . . . . the donning of caps and gowns . . . . searching for safety pins . . . . mirrors everywhere . . . . the chorus in red robes . . . . borrowed from Adelphi . . . . faculty robing in the Great Hall . . . . gold tassels, hoods with colored bands . . . . Jake receives an orchid from the Class . . . . newspaper reporters and photographers arrive . . . . the chorus warms up . . . . lining up in the court yard . . . . faculty join in at the patio . . . . waiting . . . . Professor Fiess . . . . Marshall . . . . the procession begins . . . . Mrs. Erk at the organ . . . . "Pomp and Circumstance, No. 1" . . . . chorus leads . . . . seniors and faculty follow . . . . Executive Committee members distribute programs . . . . 2:30 p.m. . . . . Commencement begins.





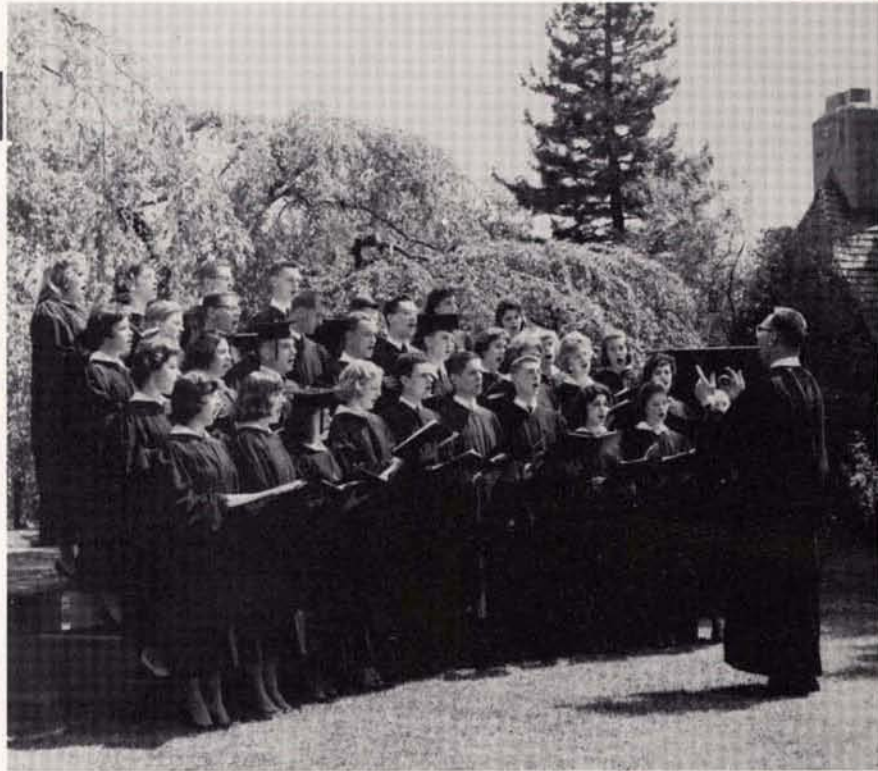
"Pomp and Circumstance"



Commencement begins



The Invocation



"Pioneers, O Pioneers"

Invocation and prayer . . . . Monsignor McGinley, President of Fordham . . . . the National Anthem . . . . the Chorus . . . . "Pioneers O Pioneers . . . . Are there some of us to droop and die? . . . . All the past we leave behind, fresh and strong the world we seize" . . . . four movements and 19 minutes . . . . Dr. Harold Taylor . . . . former President of Sarah Lawrence College . . . . address to the graduates . . . . "the need to educate all youth . . . . if test scores are low, teachers are needed who can raise them . . . . less talk of competition with the Russians . . . . fewer celebrations of the Civil War and more work for integration . . . . more teachers and fewer soldiers . . . . Let us lead the world in idealism, and trust in mankind to follow."



Dr. Harold Taylor



Rosemarie Capone receives the Valedictory Award.



"Wonder what the class gift is"

President Lee speaks . . . seen by most students and graduates for the first time . . . letters of congratulations from those not attending . . . Governor Rockefeller, President Hamilton, Mr. Carlino, Mr. Moore, and the President of North Carolina State University . . . next on the program . . . presentation of the Gift of the Class of 1961 by Class President, George May . . . an opportunity for the graduates to speak . . . the opportunity lost . . . seniors forgotten as President Lee skips the presentation . . . introduces Judge Sullivan . . . Chairman of the Council . . . presentation of the Ward Melville Valedictory Award . . . "great books of the sciences and humanities" . . . Miss Rosemarie Capone, the recipient . . . permitted to stand in her place . . . few in the audience can see her . . . seniors forgotten again.



Presentation of the Candidates by Dean Olsen.



Marylou receives her degree.

Presentation of the candidates for the degree . . . .  
 Dean Olsen . . . . his only opportunity to speak . . . .  
 2 sentences . . . . conferring of the degrees . . . .  
 twenty-five receive the Bachelor of Science . . . .  
 17 in science, 8 in liberal arts . . . . graduates shift  
 their tassels to the left . . . . the benediction . . . .  
 Reverend van Dusen, President of Union Theological  
 Seminary . . . . the recessional . . . . "Triumphal  
 March" . . . . seniors cluster to look at the "parch-  
 ment" . . . . "We finally made it!" . . . . under-  
 classmen, families and faculty gather . . . . con-  
 gratulations . . . . cameras kept busy . . . . Miss  
 McMahon rounds up the caps and gowns . . . .  
 questions about the class gift . . . . an illuminated  
 outdoor bulletin board . . . . "Will you still pre-  
 sent it?" . . . . the reception in the Italian Gardens  
 . . . . parents exposed to George's punch and  
 cookies . . . . final good-byes . . . . a brief touch  
 of sentiment . . . . well-known feelings of disap-  
 pointment in the program . . . . the parking lots  
 empty . . . . College 1957-1961 is over for 1/6 of  
 the original class.



"We made it!"



"It's all over now"







A model of the future . . . . Stony Brook . . . . many students, larger faculty, enriched programs, more degrees, increased facilities, widened scope, infinite potential . . . . Mr. Ward Melville, the man who makes it all possible.



# Student Directory

## 1960-1961

ACKERMAN, GARY '64  
Beach Drive, RFD #3  
Huntington, N. Y.  
ADINOLFI, L. '64  
6 Sherman Dr.  
Garnerville, N. Y.  
ALEXEICHIK, JAMES '64  
1 Hanley Place  
44 Belle Crest Ave.  
E. Northport, L. I.  
ANDERSON, HOWARD '62  
Gregory Drive  
Lake Ronkonkoma, L. I.  
ANDREW, BARBARA '64  
211 Dickinson Ave.  
E. Northport, L. I.  
AQUILINO, MICHAEL '64  
E. Northport, L. I.  
ALTEMOSE, GEORGE '64  
90 Summers St.  
Oyster Bay, L. I.  
ARFMANN, JEAN '62  
155-35-101st St.  
Howard Beach 14, L. I.  
ARNIO, SUSAN '64  
23 Norfolk Dr. E.  
Elmont, L. I.  
ARNOW, JUDITH '64  
80-15-250th St.  
Bellerose, N. Y.  
ARNS, SANDRA '64  
77 Bellmeade Ave.  
Smithtown, L. I.  
ARONSON, AMY '63  
21-25-34th Ave.  
L.I.C., N. Y.  
AUERBACH, STEPHEN '64  
337 Oxford Blvd.  
Garden City S. L. I.  
AYLOR, DONALD '63  
Hunt, New York  
BAIRD, DOUGLAS '63  
4 Walker Ave.  
Syosset, L. I.  
BAKER, DELORES '61  
177 Meadowsweet Rd.  
Mineola, L. I.  
BALTZERSEN, EDWARD '64  
3783 Sarah Dr.  
Wantagh, L. I.  
BARBER, GEORGE '64  
8724-115th St.  
Richmond Hill 19, L. I.  
BARNETT, STEPHEN '63  
37 Willow Ave.  
Huntington, L. I.  
BARON, CARL '64  
1812 Avenue 0  
Bklyn, L. I.  
BARR, JEFFREY '64  
5 Berkshire Ct.  
Huntington Sta., L. I.  
BARRETT, KATHLEEN '61  
133 E. Fulton Ave.  
Roosevelt, L. I.  
BARRY, PATRICK '63  
182 Beach 138th St.  
Belle Harbor 94, L. I.  
BARTLETT, ELAINE '64  
9524 Ft. Hamilton Pky.  
Bklyn, L. I.  
BECK, PAUL '61  
7 Midland Lane  
Wyandanch, L. I.  
BECKER, ROBERT '63  
569 Spring St.  
Newport, R. I.  
BENDER, PAUL '63  
47 East Pine St.  
Long Beach, L. I.  
BENTER, MURIEL '62  
2355 Central Ave.  
Baldwin, L. I.  
BERGGREN, CAROL '61  
37 Baldwin Blvd.  
Bayville, L. I.  
BERGMAN, JOEL '63  
65 Crest Dr.  
New Hyde Park, L. I.  
BERLACK, FREDERICK '64  
23 Linmouth Rd.  
Malverne, L. I.  
BEUEL, EDWARD '62  
48 Fern Street  
Floral Park, L. I.  
BIEDENBACH, DIANE '64  
193 Dow Ave.  
Mineola, L. I.  
BJORK, STEPHEN '63  
Apt. 11B  
Winoka Village  
Huntington Station, L. I.  
BLACKER, BARBARA '62  
536 Surry Place  
Oceanside, L. I.

BLAHA, JOHN '64  
1010 Rosegold St.  
Franklin Square, N. Y.  
BLEEKER, LINDA '64  
14 Waterbury Manor  
Peekskill, N. Y.  
BLIDEN, LINDA '64  
54 Elm Street  
Ellenville, N. Y.  
BLUE, HOWARD '63  
18 Bluebird Lane  
Huntington, L. I.  
BLUMHAGEN, RICHARD '63  
1204 Trinity Ave.  
Schenectady, N. Y.  
BOGARDUS, DIANE '61  
44 West Blvd.  
E. Rockaway, L. I.  
BOLZ, GAIL '61  
Ormond Park Rd.  
Brookville, L. I.  
BOYUKA, THOMAS '64  
23 South Elm St.  
Hicksville, L. I.  
BRAZ, DOUGLAS '63  
55 Prince Avenue  
Freeport, L. I.  
BRODY, RUTHANN '64  
37 Mahan Rd.  
Old Bethpage, L. I.  
BRUSH, MICHAEL '62  
607 Arcadian Ave.  
Valley Stream, L. I.  
BUCKHOUT, DAVID '63  
77 Woolsey Ave.  
Glen Cove, L. I.  
BUCKLEY, KATHLEEN '64  
118 Mayfair Ave.  
W. Hempstead, L. I.  
BURNS, PATRICIA '64  
192 Plainfield Ave.  
Floral Park, L. I.  
BUTLER, WILLIAM '62  
1 Plainview Rd.  
Farmingdale, L. I.  
BYERS, ROBERT '64  
233 North Park Dr.  
N. Massapequa, L. I.  
CAIATI, JEROME '63  
2 Bud Court  
Bayville, L. I.  
CAMPBELL, KENNETH '63  
150-29th St.  
Copiague, L. I.  
CAMPION, BARBARA '64  
174 Third St.  
Troy, N. Y.  
CAPONE ROSEMARIE '61  
286 N. Corona Ave.  
Valley Stream, L. I.  
CARLSEN, JOHN '64  
5 St. Patrick's Lane  
Cambridge, N. Y.  
CARR, FRANK '61  
2846 Whaleneck Dr.  
Merrick, N. Y.  
CARUSO, JOSEPHINE '64  
55 Smith St.  
Deer Park, L. I.  
CASALE, GERALDINE '64  
2 Jacob Rd.  
Plainview, L. I.  
CASTOLDI, THOMAS '64  
87 Rodney Place  
Rockville Centre, L. I.  
CENSOR, ALEXANDER '64  
657 E. Olive St.  
Long Beach, L. I.  
CHAPTER, JOHN '62  
2429 Penroy St.  
East Meadow, L. I.  
CHERNOMAS, FREDERICK '64  
314 Richmond Ave.  
Massapequa, L. I.  
CHICHESTER, TIM '64  
197-02-100th Ave.  
Hollis 23, L. I.  
CLEARY, MARGARET '64  
333 Archer St.  
Freeport, L. I.  
COHEN, HEYWARD  
Picardy Lane  
Syosset, L. I.  
COLEMAN, DENNIS '62  
130 Mill River Rd.  
Oyster Bay, N. Y.  
COLLINS, MARIE '61  
173-29th St.  
Lindenhurst, L. I.  
COPEL, LYNN '64  
156 Olive St.  
Huntington Station, L. I.  
COSTELLO, RALPH '63  
904-11th St.  
West Babylon, L. I.

CREAN, PATRICK '61  
3 Greenhills Rd.  
Huntington Station, L. I.  
CRUYPELANDT, CAROL '64  
198 Bryant Ave.  
Floral Park, L. I.  
CRUTY, MICHAEL '63  
Kattleville Rd.  
Binghamton, L. I.  
CULLEN, PAT  
8904 218 Place  
Queens Village 29, N. Y.  
CZERNIEWICZ, JOHN '63  
337 Foch Blvd.  
Mineola, L. I.  
DAHLSTROM, CHARLOTTE '61  
136 Carle Rd.  
Westbury, N. Y.  
DAILEY, EUGENE '61  
138 Carmans Rd.  
Farmingdale, L. I.  
DaSILVA, LYNN '63  
379 Andrew Ave.  
East Meadow, L. I.  
DAVIDSON, MICHAEL '62  
1911-62nd St.  
Bklyn, 4, N. Y.  
DAVIS, MARSHA '62  
7 Atwood Road  
Plainview, L. I.  
DAWE, MARY '64  
366 N. Fulton Ave.  
Lindenhurst, L. I.  
DAWSON, JUNE '61  
200 Cedar Lane  
Babylon, L. I.  
DEAR, LINDA '64  
Meyers Rd.  
Liverpool, N. Y.  
DeCARLI, ROBERT '63  
Box 466  
Brentwood, L. I.  
DeNIGRIS, MARIE '64  
2683 Rowehl Dr.  
E. Meadow, L. I.  
DePEW, JOHN '64  
Main St., P.O. Box 45  
Fishkill, N. Y.  
DiGAETANO, ROSEMARY '64  
12 Elzey Ave.  
Elmont, L. I.  
DIGIOVANNI, DIANE '63  
6 Wallingford Dr.  
Huntington Station, L. I.  
DOHANICH, GEORGE '63  
11 Willette Park  
Chenango Forks, N. Y.  
DONADY, JOHN '62  
35 Elk Street  
Hempstead, L. I.  
DUFFY, MICHAEL '64  
3646 Bernard Dr.  
Wantagh, L. I.  
EIFLER, WILLIAM '64  
6 Aberdeen St.  
Malverne, L. I.  
EISENLAU, GEORGE '62  
185 Ellison Ave.  
Roosevelt, L. I.  
EISENSTEIN, MARION '62  
177 Evergreen Ave.  
Smithtown, L. I.  
ELSE, BARBARA '63  
41 Salem Ridge Dr.  
Huntington 5, L. I.  
ENGELKE, WARREN '62  
198-25 Foothill Ave.  
Hollis, L. I.  
ENGLERT, BARBARA '63  
162 Caroline Ave.  
Garden City, L. I.  
EGAN, ELIZABETH '63  
106 E. Roosevelt Ave.  
Roosevelt, L. I.  
FACTOR, HARVEY '64  
85 Elm Drive  
Levittown, L. I.  
FARLEY, JUDITH '63  
41 Fieldstone Dr.  
Syosset, L. I.  
FARNWORTH, EDWARD '61  
155 Berry Hill Rd.  
Oyster Bay, L. I.  
FEDOROFF, MARY '62  
Old Tappen Rd.  
Glen Cove, L. I.  
FEDORYS, MARY '64  
7 Doris Place  
Massapequa, L. I.  
FERRARI, LINDA '64  
78 Osborne Rd.  
W. Hempstead, L. I.  
FIELD, MICHAEL '64  
151-37-27th Ave.  
Flushing, L. I.

FINDEIS, MONICA '64  
 175 Bay Ave.  
 Patchogue, L. I.  
 FISCHER, MADELEINE '62  
 800 West End Avenue  
 New York 25, N. Y.  
 FISHMAN, JANET '62  
 67 Constellation Rd.  
 Levittown, L. I.  
 FOWLER, THOMAS '63  
 1135 Second St.  
 Rensselaer, N. Y.  
 FOX, ROBIN '64  
 15 Garden St.  
 Bayville, N. Y.  
 FRANK, MARTIN '63  
 24 Phillips Rd.  
 Glen Cove, N. Y.  
 FREES, GEORGE '64  
 192 S. Long Beach Rd.  
 Rockville Centre, L. I.  
 FRIEDMAN, FLORENCE '64  
 243 Eton St.  
 Oceanside, L. I.  
 FRIEDMAN, JOAN '64  
 P.O. Box 225  
 Central Islip, L. I.  
 FRIEDMAN, MICHAEL '62  
 201 Elm St.  
 Roslyn Hts., N. Y.  
 FRITTS, FREDERICK '63  
 914 Rockaway Ave.  
 Valley Stream, L. I.  
 FUHRMAN, MARGOT '63  
 318 S. 9th Street  
 New Hyde Park, L. I.  
 FUKUHARA, YOSHINO (Grace) '64  
 400 Half Hollow Rd.  
 Deer Park, N. Y.  
 FURST, VALERIE '64  
 156 Berkeley Place  
 Massapequa, L. I.  
 GALLAGHER, BRUCE '63  
 1203 Ott Lane  
 N. Merrick, L. I.  
 (E. Meadow P. O.)  
 GALLUCCI, VINCENT '63  
 802 Nebraska Ave.  
 Bay Shore, L. I.  
 GASS, ALBAN '63  
 34 Willoughby Ave.  
 W. Islip, N. Y.  
 GEED, CAROLYN '64  
 35 Scott St.  
 New Hyde Park, L. I.  
 GILBERT, JANE '64  
 1589 E. 9th St.  
 Bklyn., N. Y.  
 GILBERT, JEREMY '63  
 1589 E. 9th St.  
 Bklyn 30, N. Y.  
 GINSBERG, LOIS '62  
 106 Orlando Ave.  
 Albany 8, N. Y.  
 GLENN, PATRICIA '62  
 109-46-172nd St.  
 Jamaica 33, L. I.  
 GOLDSTEIN, GERALD '63  
 11 Atlas Ave.  
 Malverne, L. I.  
 GOLDSTEIN, RONNIE '64  
 8320 Bay Parkway  
 Bklyn, N. Y.  
 GOLIN, DENNIS '63  
 514 Queen St.  
 Westbury, L. I.  
 GOTTSCH, MARGARET '64  
 130 West Islip Rd.  
 West Islip, L. I.  
 GREENE, KATHLEEN '63  
 18 Second St.  
 Cornwall-on-Hudson, N. Y.  
 GROSS, KENNETH '63  
 55 Circle Dr.  
 Hicksville, L. I.  
 GUIGLIANO, FRED '62  
 23 Fulton Avenue  
 Hicksville, L. I.  
 GURNEY, GEORGE '62  
 18-7th St.  
 Locust Valley, L. I.  
 HAEFELE, MATHILDA '63  
 2135 Fourth St.  
 East Meadow, L. I.  
 HAHN, WILLIAM '61  
 398-31st St.  
 Lindenhurst, L. I.  
 HAJJAR, THEODORE '64  
 131 Fulton St.  
 Massapequa Park, L. I.  
 HANDELMAN, MARIAN '64  
 16 Baker Hill Rd.  
 Great Neck, L. I.  
 HANHAM, JOHN '62  
 40 Bellecrest Ave.  
 E. Northport, L. I.  
 HANLY, IRENE '61  
 161 Wellington Rd.  
 Garden City, L. I.  
 HANSEN, DAVID '64  
 522 Park Avenue  
 N. Merrick, L. I.  
 HARGETT, LAWRENCE '63  
 58 Todd Dr. North  
 Glen Head, L. I.  
 HARRIS, LEE (Mrs.) '63  
 39 Lafayette Blvd.  
 Copiague, L. I.  
 HARRIS, MARTHA (Mrs.) '61  
 58 Amherst Lane  
 Hicksville, L. I.  
 HARSHA, PHILIP '62  
 1 Evergreen Dr.  
 Syosset, L. I.  
 HAUBEN, PHYLLIS '64  
 3458 Fenton Ave.  
 New York 69, N. Y.  
 HAUG, ANTON '63  
 1413 Park St.  
 Peekskill, N. Y.  
 HAUG, NINA '62  
 (same as above)  
 HEALY, MARTIN '64  
 2 Totten St.  
 Bethpage, L. I.  
 HEFFERNAN, JANET '64  
 266 Jamaica Blvd.  
 Carle Place, L. I.  
 HELLER, STEPHEN '64  
 103-26-118th St.  
 Richmond Hill 19, L. I.  
 HERMANS, CARL '64  
 4 Bradford Place  
 Huntington Station, L. I.  
 HERSHBERGER, FLORENCE '62  
 12 Grouse La.  
 Levittown, N. Y.  
 HICKEY, EILEEN '64  
 52 Greenway  
 New Hyde Park, L. I.  
 HILL, ROBERT '64  
 R. F. D. #3  
 Pulaski, N. Y.  
 HILWIE, JOHN '63  
 172 Locust Ave.  
 Babylon, N. Y.  
 HLINKA, DOUGLAS '61  
 Emery Rd.  
 Centerreach, L. I.  
 HLINKA, WARREN '63  
 Emery Lane  
 Centerreach, L. I.  
 HOFF, MARIE (Mrs.) '61  
 Oriole Way  
 Huntington, L. I.  
 HOFFMAN, DIANE '64  
 37 Acorn Dr.  
 E. Northport, L. I.  
 HOFFMAN, JAMES '64  
 112 Fay Park Dr.  
 N. Syracuse 12, N. Y.  
 HOFFMAN, LINDA '64  
 15 Glen Rd.  
 Massapequa Park, N. Y.  
 HOPKIN, AUDREY '63  
 52-30-65th Place  
 Maspeth 78, L. I.  
 HOTINE, BERNICE '64  
 1 First Ave.  
 Bayville, L. I.  
 HOTINE, CAROLYN '63  
 18 Tildean La.  
 Bayville, N. Y.  
 HOVANEC, JOSEPH '64  
 2165 Willoughby Ave.  
 Wantagh, L. I.  
 HOWLEY, ROBERT '64  
 3837 Beechwood Pl.  
 Seaford, L. I.  
 HUCK, MARY ANN '63  
 17 Elm Avenue  
 Floral Park, L. I.  
 HUNT, DOUGLAS '64  
 Box 163  
 Kingston, N. Y.  
 HURWITZ, LINDA '64  
 1403 Millwood Lane  
 Merrick, L. I.  
 INTRATOR, JUDITH '64  
 Box 642  
 So. Fallsburg, N. Y.  
 JACOBS, ARLENE '63  
 253-20-61st Ave.  
 Little Neck 62, L. I.  
 JAMISON, HERBERT '62  
 58 Duryea St.  
 Islip, L. I.  
 JEDLIKA, ROBERT '62  
 21 Unqua Pl.  
 Amityville  
 JENNERICH, MARYJAYNE '63  
 1267 Ralph St. E.  
 Seaford, L. I.  
 JOHNSON, JOY '62  
 208 Asbury Ave.  
 Carle Place, L. I.  
 JOHNSON, ROBERT '62  
 271 First Avenue  
 Massapequa Park, L. I.  
 JONES, THOMAS '64  
 R. D. #2  
 Pulaski, N. Y.  
 JUNER, JUDITH '64  
 40 Janet Drive  
 Bethpage, L. I.  
 KADEL, ERIC '64  
 12 Giant Lane  
 Levittown, L. I.  
 KAARS, CHARLES '64  
 115 Broadfield Rd.  
 Hempstead, L. I.  
 KATZ, ALAN '62  
 245 North Ocean Ave.  
 Patchogue, L. I.  
 KEEGAN, EUGENE '62  
 32 Alpine Lane  
 Hicksville, L. I.  
 KELLY, JAMES '62  
 30 Columbia Rd.  
 Hicksville, L. I.  
 KENT, HOWARD '64  
 16 Spector Lane  
 Plainview, L. I.  
 KERN, DOUGLAS '64  
 110-44-208th St.  
 Queens Village 29, L. I.  
 KIEFER, BRIAN '62  
 715 Sharon Rd.  
 Copiague, L. I.  
 KIESLING, ROBERT '63  
 Box 475  
 Center Moriches, L. I.  
 KILDUFF, ROBERT '64  
 43 Ash St.  
 Central Islip, L. I.  
 KIRSCHENBAUM, JAY '63  
 445-2nd Avenue  
 Massapequa Park, L. I.  
 KLARBERG, CAROL '63  
 42-15-220th St.  
 Bayside, L. I.  
 KNUFFKE, ERIC '61  
 100 S. Market St.  
 Johnstown, N. Y.  
 KOEPER, JOAN '64  
 56 Block Blvd.  
 Massapequa, L. I.  
 KOPFMANN, JOAN '63  
 Larry's Lane  
 Pleasantville, N. Y.  
 KOZAKIEWICZ, BARBARA '63  
 534 Maxwell Street  
 West Hempstead, L. I.  
 KRAEMER, ANNETTE '63  
 58 Beechwood Lane  
 New Hyde Park, L. I.  
 KROPAC, WILLIAM '63  
 Box 197, RFD #1  
 Chenango Forks, N. Y.  
 KRAWCZYK, JOHN '64  
 Dock Rd.  
 Speonk, L. I.  
 KUNCZE, CAROL '62  
 211 S. 12th St.  
 Lindenhurst, L. I.  
 KURNOL, HILDEGARDE '61  
 551 Beacon Ave.  
 Lindenhurst, L. I.  
 KURZ, ANN '63  
 80 Netz Place  
 Albertson, N. Y.  
 KUSKO, JAMES '64  
 1053 Pulaski Rd.  
 E. Northport, L. I.  
 LAWSON, LOIS '63  
 67 Tompkins St.  
 E. Northport, L. I.  
 LEIBOWITZ, SARA  
 73-62 Bell Blvd.  
 Bayside 64, L. I.  
 LEONHARDT, RUBYMAE '63  
 552 Hickory St.  
 Lindenhurst, L. I.  
 LESSLER, LANCE '62  
 65 Shelder Lane  
 Roslyn Heights, L. I.  
 LEVINE EDITH  
 203 Millington Rd.  
 Peekskill, N. Y.  
 LEVINE, GERARD '62  
 7 Fordham Rd.  
 Hicksville, L. I.  
 LEVY, ARLENE '64  
 152 Block Blvd.  
 Massapequa Park, L. I.  
 LEVY, LILETTE '64  
 285 Orchard Rd.  
 Levittown, L. I.  
 LEVY, MICHAEL '63  
 285 Orchard Rd.  
 Levittown, N. Y.  
 LEWANDOWSKI, PATRICIA '64  
 44 Hawthorne Place  
 Malverne, L. I.  
 LIERS, HENRY '62  
 108 Ralph Avenue  
 Bellmore, L. I.  
 LINDSTROM, GARY '64  
 Weston, Ave.  
 Fishkill, N. Y.  
 LIONELLS, MARYLOU '61  
 47 Evergreen Ave.  
 New Hyde Park, L. I.  
 LITTLE, GORDON '61  
 Kirschbaum's Trailer Park  
 West Waterview St.  
 Northport, L. I.

LONG, JOHN '64  
Gould Rd. & Pine St.  
Sayville, L. I.  
LONSKE, QUINTEN '62  
19 Gray Place  
Yonkers, N. Y.  
LOTTER, KENNETH '62  
15 Fairview St.  
Portville, N. Y.  
LOUGHLIN, TIMOTHY '64  
527 Lombardy Blvd.  
Brightwaters, L. I.  
LUSCHER, CLAIRE '63  
49 Forest Avenue  
Massapequa, L. I.  
LUSSI, JOHN '62  
89-62 Vanderveer St.  
Queens Village, L. I.  
LYPKA, MICHAEL '64  
25 Ontario Avenue  
Plainview, L. I.  
McCANN, BARBARA '63  
305 Victory Dr.  
Ronkonkoma, L. I.  
McCANN, KEVIN '64  
101 Pennsylvania Ave.  
Long Beach, L. I.  
McCORMACK, CORNELIA '62  
27 Boxwood Lane  
Hicksville, N. Y.  
McCULLOUGH, EDWIN '64  
15 Dewitt St.  
Valley Stream, L. I.  
McCULLOUGH, ROBERTA '63  
40 Netz Place  
Albertson, L. I.  
McDONALD, JEANNE '64  
74 Pennsylvania Ave.  
Freeport, L. I.  
McLAUGHLIN JAMES '64  
178 N. Clinton Ave.  
Bayshore, N. Y.  
McMANUS, RICHARD '63  
76 Cord Lane  
Levittown, L. I.  
MacDONALD, KATHLEEN '64  
317 Miller Ave.  
Freeport, L. I.  
MAIWALD, CECELIA (Mrs.) '61  
21 First Street  
Syosset, L. I.  
MALCOLM, DAVID '63  
15 Swan River St.  
Patchogue, L. I.  
MAMOLA, KARL '63  
Oak Street, POB 89  
New Suffolk, N. Y.  
MANTEL, ALAN '64  
955 East End  
Woodmere, L. I.  
MANZI, ELAINE '64  
188-13th Avenue  
West Babylon, L. I.  
MARAIA, MARY '62  
20 Parkway Dr.  
Hicksville, L. I.  
MARCHESE, ANNETTE '63  
27 Irene Lane  
Commack, L. I.  
MARGULIES, WILLIAM '62  
9241-246th Street  
Bellerose, L. I.  
MARKS, BURTON '62  
46 Greenway East  
New Hyde Park, L. I.  
MARTIN, BARBARA '64  
44 Constellation Rd.  
Levittown, L. I.  
MASTERSON, JOAN '64  
22 Atlas Lane  
Hicksville, L. I.  
MATTICE, JACK '63  
108 W. Main Street  
Cobleskill, N. Y.  
MAUSSNER, MURIEL (Mrs.) '61  
27 Maple Avenue  
Farmingdale, L. I.  
MAY, GEORGE '61  
10 Barnes Lane  
East Northport, L. I.  
MAYO, CAROLYN '63  
22 Michael Lane  
New Hyde Park, L. I.  
MAXWELL, ELEANOR '63  
15 Kensington Rd.  
Garden City, N. Y.  
MELINGER, ANN '62  
10 Coles Street  
Glen Cove, N. Y.  
MEKSIN, VIVIAN '62  
49 Drohan St.  
Huntington, L. I.  
MELTZ, MARTIN '63  
60-41-251st Street  
Little Neck 62, L. I.  
MELTZER, DARYL '64  
251-10-60th Ave.  
Little Neck 62, N. Y.  
MESSINA, ALBERT '63  
88-18-107th Street  
Richmond Hill 18, N. Y.

MEYER, RAYMOND '64  
25 Taft Ave.  
Hempstead, L. I.  
METZ, CAROL '61  
299 Locust Avenue  
Oakdale, L. I.  
MEYER, STEPHEN '64  
3971 Baylis Rd.  
Seaford, L. I.  
MIERSWA, DANIEL '64  
1092 Turk Hill Rd.  
Fairport, N. Y.  
MIGHDOLL, PHILIP '63  
150 Shelter Lane  
Levittown, L. I.  
MILANO, JOHN '64  
1 Corwin Avenue  
New Hyde Park, L. I.  
MILITO, RONALD '64  
71 Stewart St.  
Floral Park, L. I.  
MILLS, MARYANN '62  
1422 Washington Ave.  
Seaford, L. I.  
MILNE, DOUGLAS '64  
43 Villa Court  
Hempstead, L. I.  
MINDEL, CHARLES '64  
3416 Bronwood Ave.  
New York, New York  
MONKS, JOAN '63  
67 Fallon Avenue  
Elmont, L. I.  
MONTE, BRUCE '63  
60-58-59th Drive  
Maspeth 78, L. I.  
MONTEFERRANTE, PETER '63  
694 Campus Street  
Uniondale, L. I.  
MOORS, BARBARA '63  
14 Marlin Court  
Sea Cliff, L. I.  
MORRIS, MEL '61  
7 Norwich Ave.  
Lynbrook, L. I.  
MOSKOWITZ, ELEANOR '62  
191 Merrick Avenue  
Merrick, L. I.  
MUCCILO, PATRICIA '64  
245 Sportsman Avenue  
Freeport, L. I.  
MULLADY, WILLIAM '64  
869 Midwood Drive  
North Bellmore, L. I.  
MULLER, WILLIAM '63  
337 Marcellas Rd.  
Mineola, L. I.  
MURDOCK, GARY '64  
Mott Lane  
Brookhaven, L. I.  
NAGLE, JOHN '61  
245 Stephen St.  
Bellmore, N. Y.  
NELSON, VIRGINIA '62  
77 Sproat Street  
Middletown, N. Y.  
NEUWIRTH, VICTOR '63  
Hazen Ridge  
Carmel, N. Y.  
NEVOLE, NANCY '61  
12 Barclay St.  
Huntington Station, L. I.  
NEWTON, GEOFFREY '63  
Greenlawn Rd. RFD #5  
Huntington, L. I.  
NICHOLSON, JESSE '61  
Battle Row  
Old Bethpage, L. I.  
NICIU, WILLIAM '62  
116 Jefferson Rd.  
Farmingdale, L. I.  
NOFI, MICHAEL '64  
80 South Centre Ave.  
Rockville Centre, L. I.  
NORWOOD, CHARLES '63  
2303 First Street  
East Meadow, L. I.  
NOVINSKI, PATRICIA '63  
Grassmere Avenue  
Oakdale, N. Y.  
O'CARROLL, JOSEPH '62  
16 Barbara Drive  
So. Farmingdale, L. I.  
OKVIST, CAROL '62  
High Street  
Lake Ronkonkoma, L. I.  
OLSEN, NORMAN '64  
116 Mirin Ave.  
Roosevelt, L. I.  
OMHOLT, TORE '64  
69 Hazard Ave.  
Huntington Station, L. I.  
ONDRICEK, ROBERT '64  
122 Deuville Pkwy.  
Lindenhurst, N. Y.  
O'NEILL, KATHLEEN '62  
3873 Keily Drive  
Seaford, L. I.  
ORTIZ, PEDRO '64  
345 So. 4th Street  
Lindenhurst, L. I.

OSTMAN, HENRY '63  
417 N. Indiana Ave.  
Lindenhurst, L. I.  
PALDY, JUDITH (Mrs.) '62  
1 Cheshire St.  
Huntington, N. Y.  
PALDY, LESTER '62  
(same as above)  
PALKA, BARBARA '64  
54 Fireplace Lane  
Hicksville, L. I.  
PALMER, BARBARA '64  
45 Herbert Ave.  
Massapequa Park, L. I.  
PASTER, ALICE '64  
420 Eastern Pkwy.  
Brooklyn 25, N. Y.  
PATCHELL, JUDITH '62  
1 Copeland Court, R.D. 11  
Huntington, L. I.  
PAUL, LARRY '62  
760 Hastings St.  
Baldwin, L. I.  
PAV, RICHARD '62  
49 Greenhills Rd.  
Huntington Station, L. I.  
PECORARO, JAMES '64  
3583 Ladonia St.  
Seaford, L. I.  
PEDERSEN, BARBARA '64  
190-05 Crocherson Ave.  
Flushing, L. I.  
PERGAMENT, STUART '63  
153 Shelter Lane  
Levittown, L. I.  
PETTINGILL, WILLIAM '64  
259 Flower Ave.  
Watertown, N. Y.  
POLIVY, BARBARA '63  
10 Chestnut Rd.  
Manhasset, N. Y.  
POLLACK, PENELOPE '63  
7 Fenway Drive  
East Northport, L. I.  
POLLAK, ROBERT '62  
330-28th Street  
Lindenhurst, L. I.  
POUPARD, RICHARD '62  
Gloria Blvd.  
Central Islip, N. Y.  
PULVER, JAY '63  
187 Sequams Lane  
West Islip, L. I.  
PYTELL, JOYCE '63  
644 Sixth Avenue  
New Hyde Park, L. I.  
QUEEN, WILLIAM '63  
8 St. John's Ave.  
Hicksville, L. I.  
RAFFLOCK, ROBERT '63  
538 Queen Street  
Westbury, L. I.  
RAPP, HENRY '64  
RFD #61 Lakeview Dr.  
Middle Island, L. I.  
RASKIN, JEFFREY '64  
64 Grant St.  
Brentwood, L. I.  
RATTO, ALPHONSE '61  
18 Cambridge Ave.  
Bethpage, N. Y.  
REDMOND, LEO '63  
Inwood Rd.  
Center Moriches, L. I.  
REICH, LORRAINE '62  
16 Brown Blvd.  
Wyandanch, L. I.  
REICH, MELVIN '62  
286 Manetto Hill Rd.  
Plainview, L. I.  
REISLER, MARSHA '63  
277 Merrick Avenue  
East Meadow, L. I.  
RENKE, ROGER '63  
81 Olsen St.  
Valley Stream, L. I.  
REYER, JUDITH '64  
92 Connecticut Ave.  
Massapequa, L. I.  
RIDDELL, JEAN '63  
58 Rollstone Ave.  
West Saville, L. I.  
RIZZO, PAUL '61  
138 Henry St.  
Inwood 96, N. Y.  
ROBBINS, CAROL '64  
60-50 Little Neck Pkwy.  
Little Neck 62, L. I.  
ROBBINS, DEANNA '64  
229 Elwood Rd.  
East Northport, L. I.  
ROBERTS, JOHN '61  
64-33-98th St.  
Rego Park 74, L. I.  
ROBINSON, DOROTHY '63  
Main Rd.  
Aquebogue, L. I.  
ROECKLEIN, ALAN '62  
Box 656  
Mastic Beach, L. I.

ROES, RICHARD '62  
 81 Terrace Dr.  
 Carle Place, L. I.  
 ROSENBERG, MARVIN '62  
 120-73-131st St.  
 S. Ozone Park, L. I.  
 ROSENFELD, RICHARD '64  
 404 Columbus Ave.  
 East Patchogue, L. I.  
 ROTH, GERALDINE '64  
 514 Stewart Ave.  
 New Hyde Park, L. I.  
 ROTH, KENNETH '64  
 28 Pioneer Blvd.  
 Huntington Station, L. I.  
 ROTHBERG, HONEY '64  
 71-66-252nd St.  
 Bellerose, L. I.  
 ROWE, EILEEN '64  
 41 Winding Rd.  
 Hicksville, L. I.  
 RUSSO, PHYLLIS '64  
 145 Fifth St.  
 Hicksville, L. I.  
 SAGSVEEN, LORRAINE '64  
 606-2nd St. North  
 E. Northport, L. I.  
 SALADINO, ANN '63  
 355 East Dr.  
 Copiague, L. I.  
 SAMOILOFF, MARTIN '62  
 Lane H  
 Huntington, L. I.  
 SAUNDERS, FRANKLIN '63  
 RFD #4 Deer Park Ave.  
 Huntington, L. I.  
 SCHACHTSCHNEIDER, MARIE-L. '63  
 465 Moriches Rd.  
 St. James, L. I.  
 SCHANZ, SYLVIA '64  
 265 Roosevelt Ave.  
 Freeport, L. I.  
 SCHIMMEL, RICHARD '64  
 8 Cinque Drive  
 Farmingdale, L. I.  
 SCHNEIDER, HOWARD '63  
 2118 Central Dr. N.  
 East Meadow, L. I.  
 SCHOENBAUM, CYNTHIA '63  
 85 Olsen Street  
 Valley Stream, L. I.  
 SCHOTT, PAUL '64  
 100 Norman St.  
 New Hyde Park, L. I.  
 SCHUBERT, FREDRIC '62  
 2760 Valentine Pl.  
 Wantagh, L. I.  
 SCHULZ, CARL  
 27 Leeds Street  
 Huntington Sta., L. I.  
 SCHWEMMER, SUSAN '64  
 38 Blanche Street  
 Plainview, L. I.  
 SEAMAN, GERALD '62  
 RFD #1 Brewster Ave.  
 Northport, L. I.  
 SECULAR, SIDNEY '62  
 Corbin Ave.  
 Shirley, N. Y.  
 SEGALL, PAUL '63  
 15 Cambridge Rd.  
 East Rockaway, L. I.  
 SEVIAN, WALTER '61  
 216 Albany Ave.  
 Lindenhurst, L. I.  
 SHARROCK, GLENN '62  
 15 Shortridge Dr.  
 Mineola, N. Y.  
 SHEARER, LANA '62  
 RFD #4  
 Cortland, N. Y.  
 SHEPPS, JUDITH '63  
 153-15-58th Rd.  
 Flushing 55, L. I.  
 SHEERON, FRANCES '64  
 1764 Quarter St.  
 West Babylon, L. I.  
 SHODELL, MICHAEL '62  
 42 Cedar Drive  
 Great Neck, L. I.  
 SHUTTLEWORTH, ALAN '63  
 192 Columbus Avenue  
 Babylon, L. I.  
 SILVERMAN, EVERETT '64  
 2 London Rd.  
 Hicksville, L. I.  
 SILVERMAN, RACHELLE '64  
 107-17-95th Avenue  
 Richmond Hill 19, L. I.  
 SILVERSTONE, ROBERT '62  
 128-36-233rd Street  
 Laurelton, N. Y.  
 SIMPLICIO, JON '64  
 97 Village Dr.  
 Jericho, L. I.  
 SKORPIL, ROBERT '62  
 27 Schiller Ave.  
 Huntington Sta., L. I.  
 SLECHTA, JUDITH '64  
 30 Crestview Ave.  
 Peekskill, N. Y.

SMITH, BARBARA '64  
 742 Van Buren Ave.  
 East Meadow, L. I.  
 SMITH, JUDITH (Mrs.) '62  
 793 Ft. Salonga Rd.  
 Northport, L. I.  
 SMITH, MORTON '62  
 (same as above)  
 SNIZEK, WILLIAM '63  
 94 Martens Ave.  
 Valley Stream, L. I.  
 SNYDER, WILLIAM '61  
 60 Sherwood Rd.  
 Levittown, L. I.  
 SOTAK, TERRY '63  
 858 Blendwood Dr.  
 East Meadow, L. I.  
 SPAETH, WALTER '62  
 1507 New York Ave.  
 Huntington Sta., L. I.  
 SPIVAK, LEONARD '64  
 160-15 Powells Cove Blvd.  
 Whitestone 57, L. I.  
 SPRAGG, WM. DAVIS '63  
 3 Godfrey Avenue  
 Bayville, L. I.  
 STANDINGER, HARRY  
 21 Winans Place  
 Locust Valley, L. I.  
 STEIN, MARION '64  
 1016 Motor Parkway  
 Central Islip, L. I.  
 STEPLEMAN, ROBERT '64  
 2010 Newkirk Avenue  
 Brooklyn, N. Y.  
 STILES, LYNN F '64  
 25 Hidden Lane  
 Westbury, L. I.  
 STOUT, JUDITH '62  
 2157 East 33rd St.  
 Bklyn 34, N. Y.  
 STRAUB, ROBERT '64  
 27 Salem Ridge Dr.  
 Huntington, L. I.  
 STRIMAS, JOHN '64  
 53 Seaman Rd.  
 Glen Cove, L. I.  
 STUBENRAUCH, JOHN '62  
 19 Quebec Drive  
 Huntington Sta., L. I.  
 STUTZ, JOHN '64  
 8 West Lakeland St.  
 Bay Shore, L. I.  
 SULLIVAN, CARYL '63  
 27-52-27th St.  
 L.I.C. New York  
 SWYERS, WILLIAM '63  
 558 Old Bridge Rd.  
 Northport, L. I.  
 TAX, MICHAEL '64  
 8 Benton Avenue  
 Middletown, N. Y.  
 TEBBE, CHARLES '64  
 121 Holly Ave.  
 Hempstead, L. I.  
 THOMSEN, WILLIAM '64  
 87 Prospect Road  
 Centerport, L. I.  
 TOIA, ROSEMARY '64  
 53 Anchor Ct.  
 W. Babylon, N. Y.  
 TOMFORDE, LOUISE '63  
 13 Oak Ridge Dr.  
 Huntington, L. I.  
 TOWBER, RICHARD '63  
 212-04-75th Ave.  
 Bayside 64, L. I.  
 TREADWELL, CHARLES '64  
 1031 Brown St.  
 Peekskill, N. Y.  
 TREMEL, ELSIE '62  
 99 East 24th Street  
 Huntington Sta., L. I.  
 TRUPIANO, JEROME '64  
 2509 First Ave.  
 East Meadow, L. I.  
 TSCHABRUN, EDWARD '64  
 176 Aspen Road  
 Mastic Beach, L. I.  
 UNRATH, JOHN '63  
 160-15-7th Ave.  
 Whitestone 57, L. I.  
 UPDEGROVE, KERMIT '63  
 27 Haymaker Lane  
 Levittown, L. I.  
 VAGNER, KARSTEN '64  
 8 Terrace Drive  
 Huntington Station, L. I.  
 VALLELY, GEORGE '64  
 311-4th St.  
 Greenport, L. I.  
 VALLELY, PETER '61  
 (same as above)  
 VETTER, MARILYN '64  
 319 Latham Rd.  
 Mineola, N. Y.  
 VICOLI, LORETTA '63  
 1671 Little Neck Ave.  
 North Bellmore, L. I.  
 VICTOR, ROBERT '61  
 202 North Elm St.  
 N. Massapequa, L. I.

WAIDE, MERRILY '64  
 637 Knollwood Dr.  
 W. Hempstead, L. I.  
 WAITZ, HAROLD '63  
 229-03-64th Ave.  
 Bayside, L. I.  
 WALK, JUDITH '64  
 456 Barbara Lane  
 W. Hempstead, L. I.  
 WALKER, ROBERT '61  
 25 Baylawn Ave.  
 Copiague, L. I.  
 WARMBIER, RONALD '61  
 7 Starlight Lane  
 Levittown, L. I.  
 WARREN, RICHARD '64  
 100 Parma Rd.  
 Island Park, L. I.  
 WARSHOFSKY, RENNE '64  
 139-10-28th Rd.  
 Flushing 54, L. I.  
 WATERS, JEROME '63  
 15 Alpine Lane  
 Hicksville, L. I.  
 WEAVER, MARGARET '63  
 610 Narragansett Ave.  
 E. Patchogue, L. I.  
 WEBER, LAWRENCE '64  
 179 Central Avenue  
 Lynbrook, L. I.  
 WEBER, VIRGINIA '63  
 258 Foxhurst Rd.  
 Oceanside, L. I.  
 WEHNER, GAIL '64  
 9 Nursery Rd.  
 Huntington Sta., L. I.  
 WEHRMAN, CAROL '64  
 755 Rifton St.  
 Elmont, L. I.  
 WEINBERG, SHELDON '61  
 1647 Sterling Place  
 Brooklyn 33, N. Y.  
 WEINER, STEPHAN '64  
 2738 S. Shelley Rd.  
 N. Bellmore, L. I.  
 WEISER, MADELINE  
 244 East 49th St.  
 Bklyn, N. Y.  
 WESTBROOK, ALAN  
 1978 Charles St.  
 Bellmore, N. Y.  
 WETTER, EDWARD '64  
 1032 Propp Ave.  
 Franklin Square, L. I.  
 WHALEN, CHARLES '62  
 92-33 Vanderveer St.  
 Queens Village, L. I.  
 WHELAN, ARTHUR '61  
 9 Wyandotte Lane  
 East Islip, L. I.  
 WHITE, ERIC  
 57 Orange Dr.  
 Jericho, N. Y.  
 WIGGAND, KARLEEN '64  
 228-09-67th Ave.  
 Bayside 64, L. I.  
 WILBARG, ROBERT '64  
 68 Upland Dr.  
 East Northport, L. I.  
 WILENSKY, PHYLLIS '64  
 80-51-251st St.  
 Bellerose 26, L. I.  
 WILLIAMSON, CAROL '62  
 19 Dickinson Ave.  
 E. Northport, L. I.  
 WILSON, DON '62  
 32 Goeller Ave.  
 Huntington Sta., L. I.  
 WIXON, NORMAN '63  
 16 Greenvale Lane  
 Levittown, L. I.  
 WOLFSOHN, RAPHAEL '63  
 294 Finimore Ave.  
 Uniondale, L. I.  
 WRIGHT, CHARLOTTE (Mrs.) '61  
 318 Secatogue Ave.  
 Farmingdale, L. I.  
 YEVCHEK, NANCY '63  
 39 S. Hillside Ave.  
 Elmsford, N. Y.  
 YOLI, PATRICIA '64  
 1 Dalewood Place  
 Huntington Sta., L. I.  
 ZAFONTE, LEO '63  
 68 Washburn Ave.  
 Freeport, L. I.  
 ZEMAN, FRANCIJA '64  
 527 Parker Ave.  
 Plainedge, L. I.  
 ZEMSKY, STEVEN '63  
 1230 East 9th St.  
 Bklyn 30, N. Y.  
 ZIMMER, PETER '64  
 231 Central Avenue  
 Fredonia, N. Y.  
 ZSUFFA, EUGENE '62  
 4 Sutton Place  
 Massapequa, L. I.  
 ZUCKENBERG, EMILY '64  
 18 Metropolitan Oval  
 New York, N. Y.

*To Mr. Bill Fox and Mr. Pete Merchant of Taylor Publishing Company and to Carol Studios goes our sincere appreciation for their assistance in preparing this first yearbook.*

*The Editors*



**TAYLOR PUBLISHING COMPANY**

"The World's Best Yearbooks Are Taylor-made"

YEARBOOKS



