

Statesman

FRIDAY
FEBRUARY 13
1976
Stony Brook, New York
Volume 19 Number 47

Concert To Aid Guatemala Victims Requested

By EDDIE HORWITZ

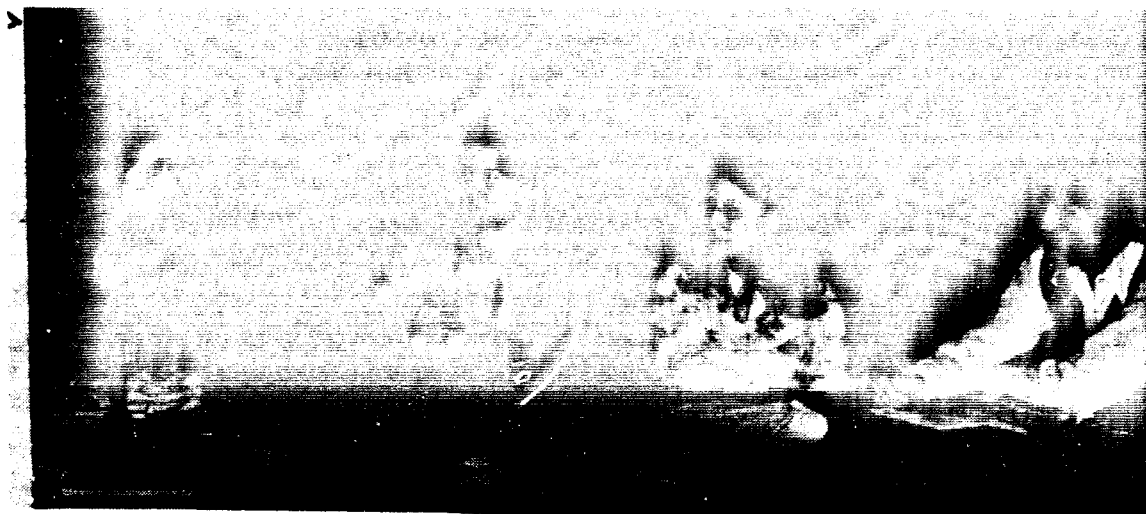
The Polity Senate has directed the Student Activities Board (SAB) to look into the feasibility of running a benefit concert to aid victims of the recent earthquake in Guatemala.

Commuter Senator Don Holmes, who made the motion, said that the Senate voted unanimously to hold the concert. Twelve senators have volunteered to help Holmes in the planning of the concert. "The senators expressed concern for the people of Guatemala," he said.

Holmes said that he was given an account of the disaster by Mike Brody, a former Stony Brook graduate student, who has just returned from the United States embassy in Guatemala. According to Holmes, Brody said that 4 square miles of earth was overturned and corpses were bulldozed into mass graves. The graves were opened up in the ensuing quakes after the first major quake. "People, according to Newsday, are eating rats and anything else they can get their hands on," said Holmes.

Holmes said that he is calling musicians in hopes of persuading some of them to perform, and he expects to get 4 or 5 to appear.

The right wing military Guatemalan government does not accept the United States government aid, said Holmes, but money from the concert would be



THE POLITY SENATE, at a meeting Wednesday night, is organizing a benefit concert to collect funds for ravaged Guatemala.

accepted because it is a person to person contribution. Also, Holmes said "Up until now the U.S. government has offered only half a million dollars in aid."

Holmes stressed the need for more volunteers, "We

need people to translate this plan into action," he said. "I'd like to see students get involved in a benefit to aid the living, specifically the 400,000 homeless."

Holmes said, "Many people are needed to staff all manner of positions, some of which are usually paid and some which aren't so we can send as much aid as possible."

Holmes will ask the senate for a small amount of money to get the concert project started. He said that the concert will have reasonable ticket prices along with a good night of entertainment.

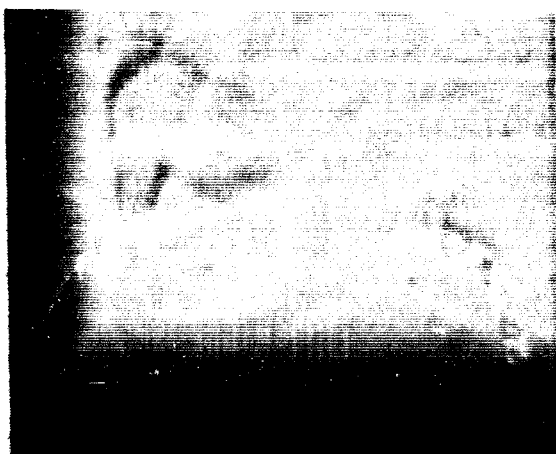
"I think other colleges might also follow our lead and stage some sort of event for the purpose of acquiring aid for the beleaguered people of Guatemala" said Holmes.

Polity President Earle Weprin said that the concert was a good idea. "I think its good that students are realizing there is an outside world. It (the concert) is just a matter of helping people."

So far that earthquake has reportedly left 20,000 dead, hundreds of thousands wounded, and 400,000 people homeless. Anyone interested in working or organize this concert is invited to attend a meeting on Monday night at 7:30 PM in room 226 in the union.



EARLE WEPRIN



DON HOLMES

Pohanka Removed From Assembly Position

By DAVID RAZLER

The Executive Committee of the Student Assembly has voted to remove Betty Pohanka from her seat as Executive Vice President of the organization. However, Pohanka's supporters have raised questions on whether or not the vote was legal and whether the committee has the right to remove an officer.

The committee voted to remove Pohanka because at the time of her election she was under academic suspension from Stony Brook.

However Stony Brook Student Assembly Representative Gerry Manginelli said according to the bylaws of the Student Association, the vote was illegal. Manginelli said that not only was a quorum not present at the meeting, but the bylaws state that only the full assembly can remove an officer. Student Assembly President Bob Kirkpatrick said that the Assembly bylaws allow the executives to act "in place of the membership,"

and therefore the vote was legal.

Pohanka retains her post as Executive Vice President of the Assembly's sister organization SASU, the Student Association of the State University. Because SASU is incorporated, an officer cannot be removed without a vote of the entire body of representatives present.

Kirkpatrick said that he had learned of Pohanka's ineligibility after he called Stony Brook Director of Records William Strockbine to check on Pohanka's scholastic record. He said that he made the call because he learned that Pohanka had earlier checked on his academic history. "I learned more than I thought I would," he said. "I finally decided that I'm not going to take all of the malicious rumors that were designed to unseat me lying down."

Dispute

The actions are the most recent in the dispute between Kirkpatrick and

Pohanka—a dispute which led to the formation of an investigating committee. The committee is looking into allegations of corruption and financial irresponsibility against Kirkpatrick, Pohanka and SASU Vice President Stuart Haimowitz.

The charges against Kirkpatrick and Haimowitz include misuse and irresponsibility in handling Student Assembly and SASU funds. Pohanka has been charged with trying to take over the organization and incompetence in performing her job.

The report by the committee was scheduled to be released at a membership conference last week. However, it was not released because Kirkpatrick had walked out of the meeting, and the assembly could not raise a quorum.

Investigating Committee Chariman Tim McCorcle said that he was going to publish the report in the Maratime College Campus Newspaper, but the report has still not been released.

Statesman has received two contradictory versions on the contents of the report. One stated that the report absolved Kirkpatrick of the charges, and the other one stated that the committee found Kirkpatrick guilty of misappropriation of funds.

Although several members of the committee have commented that the report will indicate who is to blame for SASU's problems, McCorcle has stated that no officers will face impeachment as a result of the committee's findings.

Kirkpatrick said today that he was "very upset" over the harassment which Pohanka has received as a result of the investigations in the last few weeks. Pohanka said that her files have been disrupted and her personal belongings in the SASU office have been damaged. Kirkpatrick said that the disruption resulted from "some activities on the part of some very frustrated people," and he was opposed to their actions.

News Briefs

Bomb Explodes at Hearst Castle

A bomb exploded yesterday in a guest house at San Simeon, the famed Hearst Castle built by the grandfather of Patricia Hearst, the newspaper heiress now on trial in San Francisco, authorities said.

Visitors to the state monument were reported evacuated from the main building. San Luis Obispo County sheriff's deputies said they detained a busload of visitors for questioning.

The bomb exploded at about 10:20 AM in a guest house about 100 yards from the castle, deputies said.

The castle, located on a hill overlooking the Pacific Ocean about 45 miles north of San Luis Obispo, was built by newspaper publisher William Randolph Hearst. It was later donated to the state and is open to the public.

Carter Changes Busing Stand

Democratic presidential hopeful Jimmy Carter has changed his stand on forced school busing since the days when, as governor of Georgia, he supported a planned one-day school boycott as "a last resort" to express antibusing sentiment.

The record also shows some differences between Carter's campaign statements and his actions as governor on welfare reform and taxes.

In 1972, white parents in Augusta, Georgia planned a one-day boycott to express opposition to the first phase of a forced busing plan. They wanted the state legislature to call on Congress to summon a constitutional convention to consider an antibusing amendment.

Carter, then governor, said that if the legislature didn't pass such a resolution, he would support the boycott as a last resort. "The massive forced busing of students . . . is the most serious threat to education I can remember," Carter said.

Betty Ford Supports ERAmerica

First Lady Betty Ford has given her support and a \$50 donation to ERAmerica, a new national organization to coordinate efforts to ratify the Equal Rights Amendment.

Ford met at the White House on Wednesday with two leaders of the new group — Elly Peterson, a former Republican State Chairman from Michigan and Assistant Chairman of the Republican National Committee, and Elizabeth Carpenter, former press secretary to Lady Bird Johnson.

The formation of ERAmerica was announced last month by Representative Margaret Heckler (R-Massachusetts). It has the backing of numerous organizations and seeks to win passage of the amendment in four more states needed to ratify the amendment to ban discrimination because of sex.

Angela Davis Teaches Marxism

Activist Angela Davis will teach a course on Marxism at Stanford University this spring at the invitation of the students, according to the university.

The student senate voted 12-3 yesterday to invite her and two other guest teachers — Ernest Mandel, a Marxist economist from Belgium, and Claude Steiner, a radical clinical psychologist from the San Francisco Bay area.

A special assessment of about \$10,000, approved by a student referendum in 1974, is available to pay the teachers.

Accused Murderer Acquitted

Charles White, accused of killing a 15-year-old girl to prevent her from testifying against him in a federal prostitution probe, was cleared of the charge yesterday.

A State Supreme Court panel of six men and six women found White innocent of a murder charge after a four-week trial.

White, 34, of Buffalo was accused of strangling Annette Petty in a motel room in the suburban Town of Tonawanda. Her body was found in a bathtub at the motel on October 21, 1974.

The state called 13 witnesses, two of whom testified that White told them about the slaying during a talk in a tavern only hours after Petty was killed.

A motel room clerk also identified White as the man who checked into the motel under an assumed name and was assigned the room in which Petty was later found dead.

Defense lawyer George P. Doyle called no witnesses. He claimed the couple to whom White allegedly confessed told conflicting stories to the police about their conversation with White. The room clerk, according to Doyle, identified White only after police had suggested that White was the man.

Susan Ford Quits Job

Susan Ford is leaving her job as an Associated Press stringer, or part-time photographer, because she is playing a partisan role in campaigning for her father's election to a full term as President.

Ford, 18, had last taken photographs for the AP in December before she took a leave from Mount Vernon College to vacation in Colorado. Since returning from Colorado, she campaigned for her father in New Hampshire.

Billiard Wizard May Instruct Students To Play in SB Union

"Cueball" Kelly, one of two living Hall of Fame billiards players, may be working in the Union as a billiards instructor and demonstrator, Union Services Director Tom Moffett said.

Kelly, an active 80-year-old billiards player, hopes to stir up interest in the game by offering his services and inviting friends like Willy Mosconi, the other living Hall of Famer, to demonstrate billiards techniques.

Adequate Interest

Last year Kelly gave a pool exhibition at Stony Brook. Noticing the interest that the show attracted, Kelly came up with a plan to open the Billiards room. He distributed a petition and found that there was adequate student interest. The proposed plan, currently under consideration by the Union Governing Board, would reopen the Billiards room for a 12-hour day. Kelly would probably be available here during alternate months until the end of the semester, Moffett said. In addition, several students would be hired to work in the Billiards Room.

"If he [Moffett] is into it, I'm sure he's capable of it but I don't think that's the best way of serving the students," said Union Governing Board House and Operations Committee Chairman Mark Minasi. He said, The Billiards Room should be used to house the Commuter College. There is currently some controversy surrounding the Commuter College's proposed move from Gray College to the Union.

Last year, it was noticed that there was declining interest in the sport. A survey conducted by the Union found that only four out of 12 tables were being used at any one time in the room. As a result, the room was closed last September and has not reopened. Three of the tables have been moved to the corridor near the bowling alleys and the bowling employes distribute all pool equipment.

Moffett said, "He [Kelly] has a good rapport with students. I feel it probably will go off pretty well."

—Jeanne Finkel

Treiman Seated as Chairman; Implements Judicial Programs

By DAVID SETH FRIEDMAN
Justice Dov Treiman, unanimously elected chairman of the Polity Judiciary last week, began last night to implement his program for the court.

Treiman said that previous courts, had attempted to distribute the workload, but failed. "Under [former Judiciary Chairman Richard Korn,] I wasn't given terribly much to do," he said. "Under my chairmanship, everyone will have his own domain. That way, the maximum work will be accomplished with the maximum efficiency."

Treiman appointed every Judiciary member present at the meeting to a judicial position. He appointed Charles Leibowitz judicial coordinator of Euripeck.

Newly-elected justice Larry Dorman and Allen Lui were appointed to the editorial board of the Judicial Reports. Dorman was also appointed to replace Treiman on the circuit court because Treiman cannot hold that post and Judiciary chairman. Barry Fabrikant was appointed press secretary of the court. Treiman also appointed Brian Winthrop, who was absent from the meeting as Administrative Judge.

Minasi's Desk

Treiman said that although Korn was initially in favor of evicting Polity Treasurer Mark Minasi's desk from the Judiciary's office, he changed his mind. At the February 1 Judiciary meeting Treiman said, "Richard Korn presented the

Judiciary with a typed motion to order Mark Minasi's desk out of the Judiciary office." "The motion was unclear and did not receive a second." Treiman said that his motion to evict Minasi was nothing more than a more "elegant" version of Korn's unseconded motion.

"I wanted to compromise with Minasi, Korn said. "My motion was designed to maintain the separation of powers, but I was willing to give Minasi our office temporarily and ask the Council for our own office."

Secret Meeting

Treiman said that Korn changed his position to one of opposing Minasi's eviction after a "secret meeting" with Statesman reporter Jason Manne and Minasi.

LI Supermarket Comparison

Compiled by NEIL BERGER and GARY GEVERTS

This is the first in a weekly series of price comparisons dealing with supermarket items. This project is sponsored by the Stony Brook

Chapter of the New York Public Interest Research Group. On some occasions we will compare a number of prices from the Knosh with supermarket prices.

*Sale Item

	Finast	King Kullen	Hills (Setauket)	Hills (Lake Grove)	Pathmark
Center cut loin Pork Chops (1 lb.)	\$ 1.58*	\$ 2.19	\$ 2.19	\$ 2.19	\$ 2.19
Ground Chuck (1 lb.)	\$ 1.09	\$ 1.09	\$.98*	\$.98*	\$.99
Clorox Bleach (1 gal.)	\$.75	\$.79	\$.79	\$.79	\$.79
Hi-C Fruit Drink (46 oz.)	\$.49	\$.49	\$.53	\$.53	\$.49
Sacramento Tomato Juice (six-5½ oz. cans)	\$.93	\$.85	\$.89	\$.89	\$.85
Skippy Creamy Peanut Butter (12 oz.)	\$.69	\$.69	\$.73	\$.73	\$.69
Ragu Spaghetti Sauce w/meat (15½ oz.)	\$.63	\$.59	\$.61	\$.61	\$.59
Green Giant Nibbles (12 oz. box)	\$.49	\$.49	\$.49	\$.49	\$.49
Carolina Rice (1 lb.)	\$.45	\$.47	\$.45	\$.45	\$.45
Coke (64 oz. bottle)	\$.99	\$.99	\$.99	\$.99	\$.99
Campbell's Tomato Soup (10¾ oz. can)	\$.19	\$.18	\$.18	\$.18	\$.18
Sealtest Light n' Lively Cottage Cheese *8 oz.)	\$.47	\$.49	\$.49	\$.49	\$.39
Milk (½ gal. leading brand)	\$.82	\$.79	\$.82	\$.80	\$.79
Schaefer Beer (six 12 oz. cans)	\$ 1.28*	\$ 1.65	\$ 1.65	\$ 1.65	\$ 1.39*
Dannon Yogurt (8 oz. flavored)	\$.35	\$.36	\$.39	\$.39	\$.36
Reynolds Wrap (200 sq. ft.)	\$ 2.33	\$ 2.19	\$ 2.19	\$ 2.19	\$ 2.13
Hudson Napkins (160 one-ply napkins)	\$.59	\$.53	\$.57	\$.57	\$.53
Sugar (leading brand) 5 lb. bag	\$ 1.25	\$ 1.19	\$ 1.23	\$ 1.29	\$ 1.23
TOTAL	\$15.37	\$16.02	\$16.17	\$16.21	\$15.52

Student-at-Large

Doug Fleisher

"The worst enemy in this business is paper towels."

Ray Stoffel, February 12, 1976

Ray Stoffel is part of the University's emergency plumbers unit. His job doesn't have the glory or excitement of trying to seal leaks in the inner circle of the University decision making but instead deals with the nitty-gritty of keeping water flowing and toilets flushing.

Stoffel was on the scene yesterday when the southern-most wing of Gray College was hit with its second straight day of flooding.

Al Port, a 19-year old biology major from East Meadow, discovered the first sign of the impending flood when he was brushing his teeth Wednesday morning before going to his 10:00 class. It seems that water was flowing out of the drain in the bathroom floor.

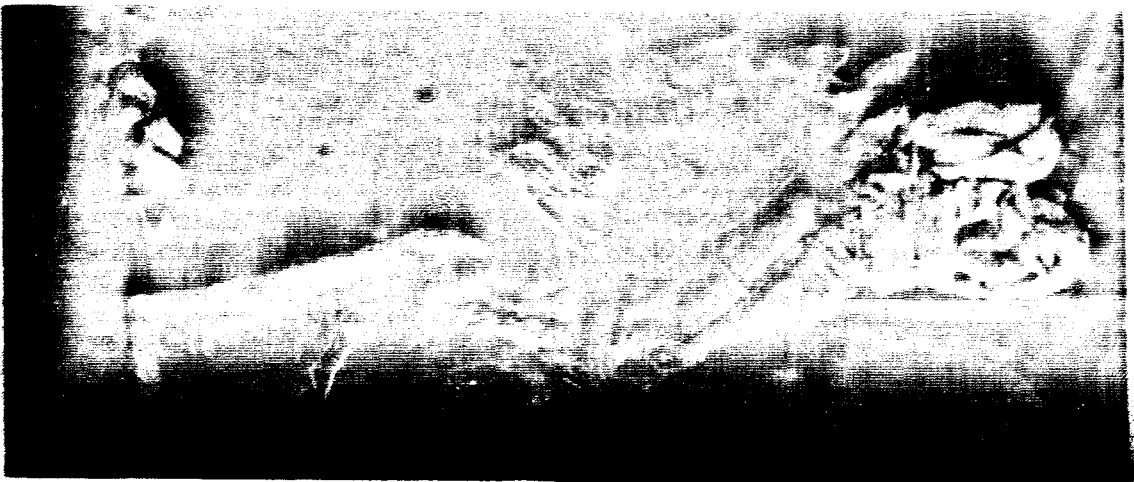
This kind of unnatural phenomenon could have been caused by any foreign object clogging the drain pipe but Stoffel, who has four years of experience here at the University, would bet on paper towels.

"The worst enemy in this business is paper towels," Stoffel said as he was putting away the arsenal of tools which the plumbers use to attack clogged pipes.

The heavy gun which Stoffel and Jack Mullen, another member of the plumbers crew, use against problem pipes is called the "Electric Eel." The Eel is an electric engine mounted on what looks like a lawn mower frame with a cut-away base and no blade. A long snakey looking coil of metal, which is turned by the electric motor gets pushed through the pipes until it hits and removes the blockage. Hopefully.

Inside Gray, the water filled the bathroom to a healthy three-inch depth, spilled out onto the hall and

Gray College Is Hit With Two Days of Flooding



Statesman photo by Don Felt

YESTERDAY'S FLOOD in Gray College shows an alternate use of Statesman.

into the rooms of those lucky enough to live near the bathroom. The flood crept under the door to the room which Port shares with Steve Seidman, a 19-year-old from Plainview, and soaked the rug to about the middle of the room. Four rooms were affected by the flood.

"I feel its the University's fault. They should have fixed it when we first called," said Port, who said he got the runaround from the University until he called the Polity Hotline. Port said it took an hour for the University to respond to both calls about the floods.

Neil Intraub, another 19-year-old from Plainview, lives in the next room on the hall. "I didn't get it as bad as some of the other guys," Intraub said. "But it stinks very poorly. It's like backed-up sewer water."

While Port is considering legal action against the University, Intraub thinks he'd wait to see if it happens again before acting. "The worst thing is that it happened twice," he said.

The back-to-back floods may have brought a new togetherness to the residents of Gray's first floor A-wing. "It's sort of brought everyone together," said Seidman, a first-semester transfer from Nassau Community College. "You know how in a disaster people get together."

After finishing with the A-wing mess, Stoffel and the rest of the plumbers crew moved off to set the Electric Eel loose on another disaster. "We've got 75 buildings to take care of. You know we got to keep moving," Stoffel said.

Preparation for the Night's Intramural Game

The ritual is started. Edgar Winter blares triumphantly out of Bose 901 speakers. Like a fire alarm forces evacuation, Winter's signal declares congregation. It is one hour before game time and everyone in Ruth Benedict College knows what's ahead.

Any missing stragglers from as far away as the Lecture Center receive the cosmic vibes. Elton John is next in line, and "Saturday nights all right for fighting, get a little action in" is the warning for the awaiting adversaries. The room encircles a bunch of frenzied athletes; perhaps prepared better for Custer's Last Stand than for a basketball game. The traditional concert continues as the wardrobes phase from dungarees and turtlenecks into sweat pants and headbands. Jim Morrison is resurrected at this stage to keep the clothes flowing and the psyche rising: "When I woke up this morning, I got myself a BEER! Let roll, baby roll . . . all night long!"

At this point, the ball players are completely



Statesman photo by Billy Berger
RICH DOMENECH (89) AND ROD STILLWELL (17) of James D2 await a rebound from an opponent's shot.



Intramurals

by John Quinn

attired, ready to kill and show signs of the butterflies (why not caterpillars?)

The mood changes, the thoughts of strategy overtake yells and screams and Elton John returns. "Benny and the Jets" subtly changes the tempo: slightly rowdy, but still pensive. The boys need counseling. Diagrams of the full court press are exhibited. Man-to-man offense is discussed. Substitutions are analyzed and predetermined before any intrasquad hassles occur on the court. And then, Back to the Bose.

The Doobie Brothers revitalize the anxious crew with "China Grove." The previous frenzy now seems mellow by comparison. "Let me at em, I could kill these guys," yells a compatriot who previously thought only of aphrodisiacs and pancakes. The Bose are cooking. It's only 15 minutes before game time. Plenty of time, we always sprint to the gym anyway.

It's now basketball bouncing time. Every person who owns a basketball must now fetch it and incessantly bounce it until the M.A. arrives. The M.A. never comes. But Alvin Lee does and "Going home" is the final pre-game tribute. The sweat is pouring off the bodies and the craving for salt tablets becomes more intense than the search for "muscle relaxers" on Thursday night.

As soon as Lee has sung his last words, the race to the gym begins. The first five to arrive start the game (no cars allowed).

The game is usually anticlimactic, although playoff time is revered more than final's week. In fact, the Administration was considering changing "Reading and Review" week to "Shooting and Rebounding" week. School could be closed during playoff time and a double elimination tournament could be instituted. But then, the Administration would cut off all heat and hot water, close the Union for a week and add on extra week's rent to our bill. After all red tape doesn't grow on trees.

Scoring Leaders

Scoring Leaders Independent League		G.	PTS.	AVG.
Name	Team			
Miller	Pleujack	3	74	24.7
Edelman	BJ	2	36	18.0
Anderson	B. Attack	2	36	18.0
Williams	Courtsmen	3	48	16.0
Green	Pub	2	32	16.0
Banks	OHG	2	32	16.0
Graziano	Chelsea	2	28	14.0
Mittler	Fouriers	2	27	13.5
Whaley	Courtsmen	3	40	13.3
Tanaka	Bandits	3	40	13.3

Scoring Leaders Hall League		G.	PTS.	AVG.
Name	Team			
Hawkins	E-O-F3	2	40	20.0
Esker	E-O-F3	2	35	17.5
Berzak	BC-A	3	50	16.7
Allen	E-O-F3	2	31	15.5
Kanner	AT-B	3	45	15.0
Stillwell	HJ-O2	2	30	15.0
Block	BBB-1	3	41	13.7
Quinn	TD-B	2	27	13.5
Schoenberg	RB-E2	2	27	13.5
Brisson	BC-A	2	26	13.0
Rea	RB-D2	2	26	13.0



Statesman photo by Billy Berger
RICH DOMENECH (dark jersey) goes up to block a shot.

Pancake Cottage

10% Discount with Student I.D. (Not valid on specials)

Family Restaurant

OPEN 24 HOURS 7 DAYS



NOW SERVING BEER & COCKTAILS

GOOD ONLY WITH COUPON

SECONDS ON THE HOUSE

GOOD ONLY MON.-FRI.

Delicious **SOUTHERN FRIED CHICKEN** CHOICE OF POTATO & COLE SLAW ALL FOR **\$2.99**

YOUR CHOICE **FISH FRY** CHOICE OF POTATO & COLE SLAW TARTAR SAUCE ALL FOR **\$2.99**

Midnight Special (From Midnight to 8 AM) **2 EGGS** WITH HOME FRIES & TOAST ALL FOR **80¢**

FREE **STACK OF PANCAKES** With Any Purchase OVER **\$3.99**

Conveniently located just 5 minutes east of Smith-Haven Mall at the intersection of Rustic Road 2315 MIDDLE COUNTRY ROAD, CENTEREACH 588-0033

HILLEL

CONTINUES ITS WEEKLY SERIES OF FACULTY-STUDENT SHMOOZES WITH Dr. LEE KOPPELMAN, DIRECTOR OF NASSAU-SUFFOLK BI-COUNTY PLANNING COUNCIL AND PROFESSOR OF POLITICAL SCIENCE, WHO WILL DISCUSS "JEWS AND POLITICS".

Mon., Feb. 16, 4-5 pm, Rm. U214. Refreshments will be served.

ALL ARE WELCOME.

HILLEL IS FUNDED BY POLITY



University of San Fernando Valley

COLLEGE OF LAW

Announcing: **FALL SEMESTER 1976**
• Full-time 3-year day program
• Part-time day and evening programs

The school is FULLY ACCREDITED by the Committee of Bar Examiners, State Bar of California. Tel: (213) 894-5711

8353 Sepulveda Blvd., Sepulveda, Ca. 91343

NOW AT THESE UA THEATRES

ADULTS

\$1.50

LOW PRICES

ADULTS

99¢

AT ALL TIMES

ART CINEMA PORT JEFFERSON 473-3435

DOG DAY AFTERNOON 7:00 & 9:15

FRI. & SAT. MIDNITE SHOW IN VASION OF THE BLOOD FARMERS 11:45

Separate Admission Req.

KIDDIES MATINEE 2:00 Sat., Sun., Mon., Tue. PEPPIE & THE SOUTH SEAS

AT ALL TIMES

BROOKHAVEN PT. JEFFERSON STA. 473-1200

GONE WITH THE WIND

8:00 pm

Sat., Sun., Mon., Tues.

MATINEE 2:00 pm



Union Auditorium Sundays at 2:30 PM

Sponsored by The CED STUDENT GOVERNMENT

ADMISSION FREE (CED Students Admitted First)

FEB. 15

ALICE IN WONDERLAND (1933) 79 Minutes

Starring W.C. Fields as Humpty Dumpty; Gary Cooper as the White Knight; Cary Grant as the Mock Turtle; Edward Everett Horton as the Mad Hatter; and Jackie Oakie and Roscoe Karns as Tweedledum and Tweedledee. A bizarre rendition of the Lewis Carroll classic patterned after the Tenniel drawings.

BEAUTY AND THE BEAST (1946) 90 Minutes

Jean Cocteau's faithful adaptation of the classic legend. Is an exquisite and magnificent work of art, enjoyable on the level of fairy tale and meaningful on the level of great poetry.

Call 246-3435 for information.

AN EFFECTIVE LETTER-WRITING CAMPAIGN?

The Polity Senate has appointed a committee which will have a table in the Union Ballroom soon, to help organize a letter-writing campaign to student's legislators to protest the disproportion with which SUNY has been cut back. Take a few minutes out when you see the table and get information. It could mean the life or death of SUNY. funded by Polity

Classified Ads Classified Ads Classified Ads Classified Ads

PERSONAL

DONNY Happy 231 Love, JK.

DON'T BLAME ME Sports Fans. It was all Pat's fault.

WANTED A Refrigerator to buy or rent. Contact immediately - will negotiate. Call Susan at 6-5337.

ANGELINA ARGENTINA - Remember Providence, remember rubber ducks, remember me. Happy Fourteenth. Reut.

FOR SALE

'67 MUSTANG standard, good body, Needs motor work. Best offer accepted. Call after 6 PM 265-0693.

TYPEWRITER FOR SALE non-portable Royal. All new rubber, new keyboard, excellent condition, \$40. Call Gerry 246-3690 Sun., Tues., Thur., after 12.

SCOTT RECEIVER with Garrard turntable and 2/way Scott speakers. Excellent condition \$120. Call 6-6351.

OLDSMOBILE DELMONT 88 1968 air conditioned, power brakes, 8/cyl., 455 engine. Asking \$500 or best offer. Call Howie at 6-4618.

MENTION THIS AD 25% off any Rings "N" Things. Old Towne Village, 166 Collectable Lane, except sale items.

HP-45 CALCULATOR in excellent condition, asking \$190. For further info call 6-4296.

SUPER-DISCOUNTED AUTO parts, full-line. New specials include: Champion Plugs .59 std., .79 RES.; 21-pc. socket set guaranteed, \$9.95; 10W40 oil, .49 Qt.; Gabriel HJacksers w/klt, \$49.95; Delco Batteries - lowest prices; Parts House Reps on Campus; call Bert or Stu, 6-4302.

1970 RENAULT R-10, good condition all over, \$200. Call 6-3494, ask for Pete.

CHEAP CAR-1965 Chevrolet Corvair Monza, only \$100 or best offer. Runs smoothly, almost everything works. 246-6558, 751-2827.

RECONDITIONED B&W, color TV's \$68 to \$220, full guarantee. Old Towne TV, 168 Collectable Lane. 331-1222.

THE GOOD TIMES for Quality Used Books, Literary Periodicals & Journals - Good Browsing -

Macrame Cords Clay, Glass & Wooden Beads 150 East Main St. 928-2664 Port Jefferson Open 11-6 Mon-Sat

TYPEWRITER ROYAL "silent" portable, excellent running cond., \$40. De Luce Manana 3 inch portable very good cond., \$30. Also Old Royal Standard, very good cond., \$25. Call Gary 6-4618.

HELP-WANTED

CASHIER PART TIME evenings. Call 724-5168 between 7 and 9 PM only.

POTTERY HELPER wanted to mix glazes, stack kilns, open shop, etc., able to work MWF 9-1, \$2.50/hr. For info 6-3657.

SUMMER UPWARD BOUND - teach high school level course? Live on campus with high school students? \$650 six weeks plus room, board. Humanities 124. 246-7011.

SERVICES

EDITING, PROOFREADING, RESEARCH assistance experienced, degreed individual with good grammar skills. 751-5607.

BORED OF COLLEGE coffee-houses? Need a change? Come to E.J.'s, in the Slavic Center, 709 Main St., Port Jeff. Relax with your favorite drink or a mug of tap beer from our bar. Dancing also. Wed-Fri, 8 PM.

MOVING & STORAGE local and long distance. Storage, crating, packing, free estimates, call County Movers 928-9391 anytime.

TYPEWRITER REPAIRS cleaning, free estimates, work guaranteed. Machines bought and sold. Typcraft, 1523 Main St., PJS 473-4337.

ELECTROLYSIS RUTH FRANKEL Certified Fellow ESA, recommended by physicians, modern methods, consultations invited, walking distance to campus. 751-8660.

TYPIST theses and term papers expertly done. Experienced, references, Stony Brook area. 981-1825.

LOST & FOUND

LOST a car's timing light in A-1 lounge of Whitman College. Substantial reward offered. Call Chey 6-4526.

LOST (\$5 reward) silver Indian Jewelry necklace with turquoise nugget, great sentimental value. Please call 6-4526.

FOUND necklace next to Amman call 6-5784, identify.

FOUND watch in Lec. Hall area. Call Rich 6-5782.

LOST green spiral notebook near bookstore on Feb. 9. Contact Anne 246-4931.

LOST a gold chain and "Chal" - "Chal" is raised on edges and blackened on inside. Inscription on back. Lost near Kelly, reward. 6-3877.

LOST dark brown gloves with light rabbit fur lining, on Mon., somewhere in Kelly D. Please return to KD108B or call 6-3849.

Lost on Fri., a watch with a silver band. Please call me I can't function without it. Merrill 6-7263.

LOST my brown checked hat on the 3rd floor in the Library. I have been through a lot with that hat and would really appreciate it back. Return to Reserve Room in Library. Thanks.

FOUND calculator in Earth and Space Sci. 001 before Christmas. Identify and claim in Statesman Office.

FOUND in vicinity of Stage XII B, female cat white with brown and black spots. Identify type of collar worn. 246-3731.

LOST brown vinyl clipboard folder. Contains independent Study application and fee license. If found call Rich at 6-7900 (WUSB office) or 589-5526 (home).

LOST small brown puppy 12 mos. old. Contact Stage XII CO19, \$10 reward.

FOUND Martin Gawoski's bank book, can be picked up at SBU main desk.

LOST clear crystal framed, pink tinted glasses. If found please call 6-6605.

LOST silver Omega automatic watch, inscription "John F. Brewer". Please call Peter Brewer 751-6697, reward \$25. Great sentimental value.

FOUND black leather coat and mittens at Asian Student Assoc., Chinese New Year's party on Jan. 29. Contact Jane Leung at 6-8333 room 304 or Joseph Loo at 6-4856.

LOST Spanish textbook "Lingna y Lectura" in infirmary on Mon. 2/9. Call Richard 246-7481.

LOST black adjustable wire bracelet (men's) in area of SBU cafeteria. Please contact Statesman Office. Reward offered.

Jerry's Charcoal House

Serving Fine Food at Low Low Prices!

<p>Breakfast Special From 7 am til 11 am only Two eggs any style, home fries, toast & jelly OR Pancakes or French toast, juice & coffee 1.00 (with bacon OR ham OR sausage) 1.75</p>	<p>Wed. CHICKEN CACCIATORE 1.75 CORNED BEEF HASH W/EGG 1.50 Thurs. CORNED BEEF & CABBAGE W/ POTATO 2.50 Fri. FRIED FLOUNDER SANDWICH FRENCH FRIES & COLE SLAW 1.50</p>
---	---

PLUS MUCH, MUCH MORE
TO CHOOSE FROM

Rts.25A, E. Setauket
751-9624

Daily Specials FROM 1.75

SUPER HAMBURGER DELUXE
"IT'S A MEAL" served with lettuce,
tomato, cole slaw, french fries, onion rings **1.65**

**ADVERTISE IN
STATESMAN**
Call Frank at 246-3690

College Students only

FREE LODGING

Midweek - Non-holidays
When you ski

Round Top

Rt. 100 Plymouth Union, Vt.
5 mi so of Killington, Gondola

**Pay for 1ST nite
2ND nite free**
at participating lodges

4600 and 3100 ft. chairs
Student lift rates \$4.50 weekends
... \$2.50 midweek. Student Ski
Assn. members save another buck
on weekends

Reservations are required
**Call Plymouth
Lodging Bureau
(802) 672-3366**

**CENTURY MALL
THEATRE
SMITH HAVEN MALL**
Joricho Turnpike (Rt. 26)
and Nascoast Highway
724-9550

NOW PLAYING

"The Sunshine Boys"

WEEKDAYS
7:35 & 9:50
SATURDAY
1:15, 3:30, 5:45, 8:00 & 10:15
SUNDAY
1:00, 3:10, 5:25, 7:40 & 9:55
MONDAY
1:00, 3:10, 5:25, 7:40 & 9:50

CHESS TOURNAMENT

ROOM: SBU 226
TIME: 7:00 pm
DATE: Feb. 19, 26, Mar. 4, 11, 18
PLAY ONE GAME EVERY THURSDAY
PRIZES: 1st - \$70 2nd - \$30 4 Class Prizes
Entry Fee: \$6 in advance, \$8 at tournament
CONTACT: Sal, Kelly D 108 A, phone 6-3948
Non-USCF Membership Fee: \$6 (under 19), \$12 (reg.)

HOT LINE IS DROWNING

Yes, we at Polity Hotline are drowning in your complaints. **HOTLINE MUST NOW OFFER ITS COMPLAINTS TO YOU, THE STUDENTS.**

WE ARE NOT:

- 1) MAIN DESK - *DO NOT call us for phone numbers*
- 2) THE PHYSICAL PLANT - *Speak to your M.A. about all maintenance problems FIRST. If you do not receive a response, then AND ONLY THEN call us.*

A LITTLE COMMON SENSE
will keep our phone lines free and our staff available for **LEGITIMATE** emergencies, and non-emergent runarounds.

POLITY HOT-LINE 246-4000

Radio Shack®

SAVE \$65.80

STEREO EXCELLENCE BY REALISTIC® FOR THE MUSIC-MINDED

COMPONENTS SOLD
SEPARATELY . . . 554.80

\$489

SYSTEM

- Realistic STA-90 AM-FM Stereo Receiver with Two Tape Monitors
- Two Realistic Optimus-2B Walnut Veneer Bookshelf Speaker Systems
- Realistic LAB-12C Automatic Changer with Base and \$12.95 Value Magnetic Stereo Cartridge

and you can

CHARGE IT
At Radio Shack





**SMITHGROVE
SHOPPING CENTER**
(NEAR PATHMARK)
PHONE 724-5232
STORE HOURS
OPEN WEEKDAYS 10-9
SATURDAYS 9-8

**GRANT'S PLAZA
IN CORAM**
PHONE 698-4777
STORE HOURS
OPEN WEEKDAYS 10-9
SATURDAYS 10-6

**COMMACK
SHOPPING PLAZA**
PHONE 543-8932
STORE HOURS
OPEN WEEKDAYS 10-9
SATURDAYS 10-9



Most items also available at Radio Shack Dealers. Look for the sign in your neighborhood.

PRICES MAY VARY AT INDIVIDUAL STORES

Austin Leaves Bench to Help Pats Beat Marist

By GERALD REIS

Since he joined the Stony Brook varsity basketball team in mid-December, Ken Austin has played only about five minutes per game. He has averaged 3.2 points per game. Against Adelphi University Tuesday night, he watched the whole game from the bench. But last night against Marist College, Austin got the chance to play, scoring 11 points, as the Patriots won, 75-68.

Austin's 20 minutes of playing time was made possible by an injury to co-captain Ron Schmeltzer. Against Adelphi, Schmeltzer had hurt his back, so he saw only limited action against Marist. Patriot coach Ron Bash chose Austin to fill in.

"We were getting hurt off the boards," Bash said. "I felt he [Austin] could handle the situation."

"Adelphi was a running team, and he hasn't got the speed as opposed to other players on the team, so he didn't play. But this [the Marist] game was a different situation. I felt he could be effective against Marist, a short, stocky team."

Austin, 6-3, 185, hit four of five shots from the floor, grabbed four rebounds, and had five assists.

"I wasn't producing well in games," Austin said, "so I hadn't been playing much. This is the most I've played since the Coliseum game [against Old Westbury State College]." That was the first game that Austin, a junior, was eligible for, as

he had transferred to Stony Brook from Bentley College in Massachusetts and was forced to sit out one year under the National Collegiate Athletic Association rule.

"Exceptional Leaper"

"Austin's an exceptional leaper," Bash said, "but he was slowed when he first joined the team. That was probably due to a lack of conditioning, since he hadn't played [varsity] ball in over a year. It's taken a while, but he's shown he can come in and give the team a boost."

"He [Bash] showed confidence in the players he put in," Austin said. "When I went in I wasn't nervous. In previous games I'd be nervous in key situations, but tonight I wasn't."

Austin acts as a swing man for the Patriots, playing both forward and guard. "I'm put in when he [Bash] wants someone to go to the hoop," he said. "I usually don't play when he wants to hold the ball. My biggest asset to the team is probably my passing."

Austin's hustle and desire were also evident last night. On one play he fouled Marist's John McKee on a layup. His momentum carried him into the eighth row of the bleachers, thus setting a new team record.

In addition to Austin, guards Jim Petsche and Larry Tillery helped out in Schmeltzer's absence, each scoring 11 points.

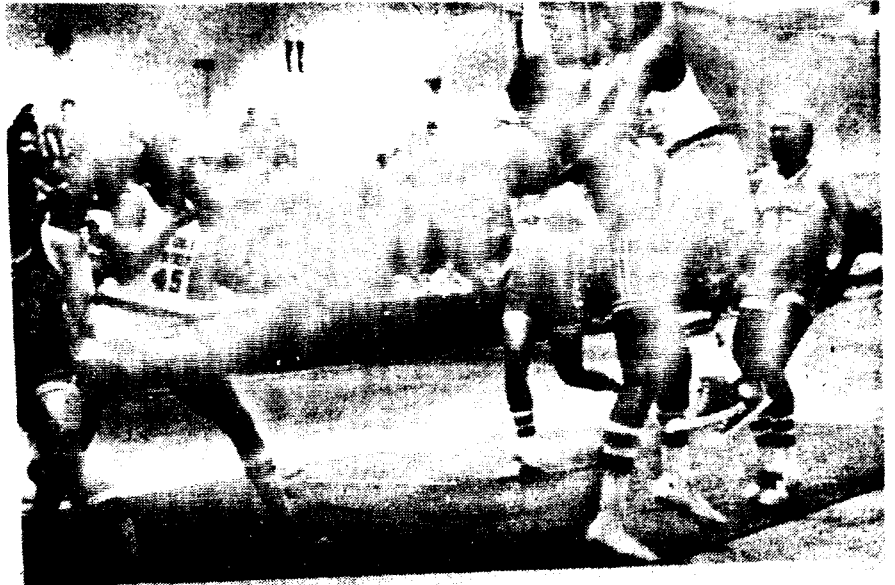
The Patriots' record is now 12-9 (5-0 in Knickerbocker Conference play). "This

was a key game because it gave us the opportunity to have a winning season," Bash said. "We now have the extra edge to go on to a winning year."

The Patriots lost to Adelphi University, 46-42, Tuesday night in Garden City. In a slow-moving first half, Stony Brook shot 73 percent (eight of 11) from the floor, to build a 17-15 lead. Almost five

minutes elapsed before Adelphi scored the first points of the game.

Adelphi's Gordon McCrae tied the score on a 15-foot jumper to open the second half. The Patriots never regained the lead. Wayne Wright led the Stony Brook attack with 11 points. Center Earl Keith, averaging 23.9 points per game, was double teamed frequently and finished with just seven. Dwayne Cotton was Adelphi's leading scorer with 15.



Statesman photo by Donis Flagello

PATRIOT GUARD LARRY TILLERY commits an offensive foul as he looks to pass the ball to Earl Keith in last night's game against Marist.

Hockey Club Loses Tenth

By ERIC WASSER

Stony Brook achieved a negative milestone Tuesday night as they lost to Rockland Community College 8-2, and went into double figures in the loss column with 2-10 with a 8-2 shellacking.

"They were the best team we've played so far," said Stony Brook defenseman Bob Bindler. "They're from Westchester and White Plains and they have an excellent crop of hockey players in that area."

Two Early Goals

The Pats began the game

sky-high and got two goals from George Lasher for a quick 2-0 lead. Rockland added a goal of their own and the first period ended with Stony Brook leading 2-1.

But then after playing one period of aggressive hockey they seemed to just throw in the towel. Two quick goals, one short handed and the other on the power play gave Rockland the lead. The Patriots took several bad penalties in addition to some questionable calls by the referees and constantly

seemed to be short handed

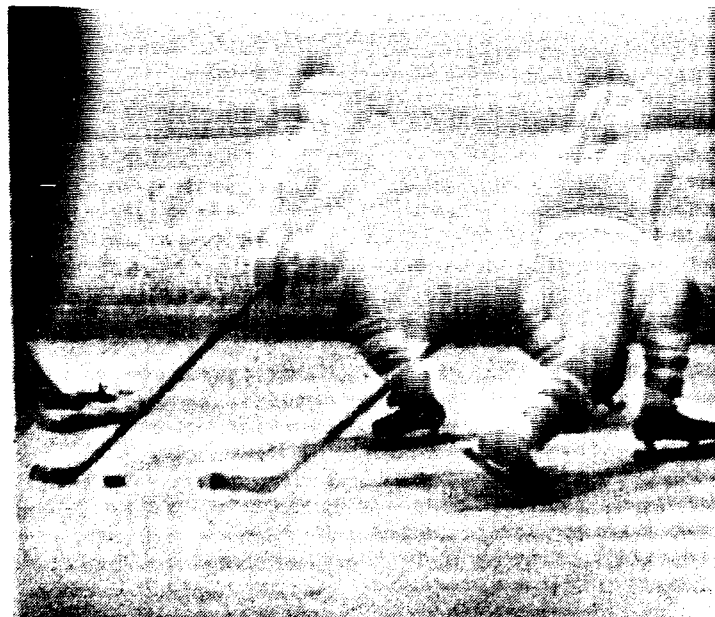
Rockland took advantage of the situation and added another two goals to make the score 5-2 after two periods. The goal tending of Warren Landau which had been sharp became shaky, the defense which was aggressive became listless, and good passing became less frequent.

Target Practice

The third period was just target practice for the Rockland skaters. Three goals were scored during the barrage as Rockland just unloaded shot after shot.

With the loss, Stony Brook sank into Division III cellar and they played accordingly, being outshot 46-20. Many of the 20 shots were weak and not difficult for the Rockland goalie.

Rockland coach Richard Guttwillig attributed the loss to one phase of Stony Brook's game. "You guys don't skate," he said. "I dunno whether you have a power skating coach or not. That's what you really need. We really weren't passing that well and we didn't look that sharp. That's what you need—a power skating coach." Frequent Stony Brook observers know that the problem doesn't end there. Stony Brook Coach Bob Lamoreaux missed the game due to illness and General Manager Carl Hirsh assumed the coaching responsibilities. Alan Gass, who was slightly shaken up during the second period, went an entire game without a point, the first time that has happened in the last 15 league contests.



Statesman photo by Billy Berger

PATRIOT AL GASS (9) tries to take the puck away from a Rockland Community College skater.

SPORTS BRIEFS

Mueller Gives U.S. 2nd Gold

Innsbruck, Austria (AP)—Speed skater Peter Mueller, shaking off an earlier poor showing, gave the United States its second gold medal of the 12th Winter Olympic Games yesterday and the young U.S. hockey team closed in on a bronze medal as the Americans continued their strong showing.

Mueller flashed to victory in the 1,000 meters in course record time. He became the first man to win a Winter Olympics gold medal for the United States since 1964. The U.S. hockey team whipped Poland, 7-2 and can clinch the bronze medal by beating West Germany tomorrow. With just three days of competition remaining in this 12-day extravaganza, the Soviets have won 11 golds and 24 total medals—an unbeatable margin. East Germany is a distant second with six golds and 14 total. Mueller's victory boosted the United States into third place with two golds, three silvers and four bronze for a total of nine medals.

Womens Basketball Team Loses

Garden City—The Stony Brook women's basketball teams season record dropped to 6-2 Tuesday night, as they lost to Adelphi University, 84-32. The game was never close.

At the end of the first half, the Pats trailed, 41-20. In the second half, Adelphi continually double and triple teamed the ball as the Patriots moved upcourt on offense. The pressure forced Stony Brook to throw wild, blind passes, which were often easily intercepted.

Only three Patriots scored: Janet Travis, 14 points; Carmen Martinez, 12; and Donna Groman, 6.

Gymnastics Team Defeated

Stony Brook's women gymnastics team was defeated Tuesday by Suffolk Community College, 66.1-56.05. The team's best performance was by co-captain Lisa Rubin, who finished first on the uneven parallel bars and the balance beam. Sue McLean picked up a third place finish in the floor exercise. The women will compete today against Hunter College at 5 PM.

Intramural column appears on Page 3