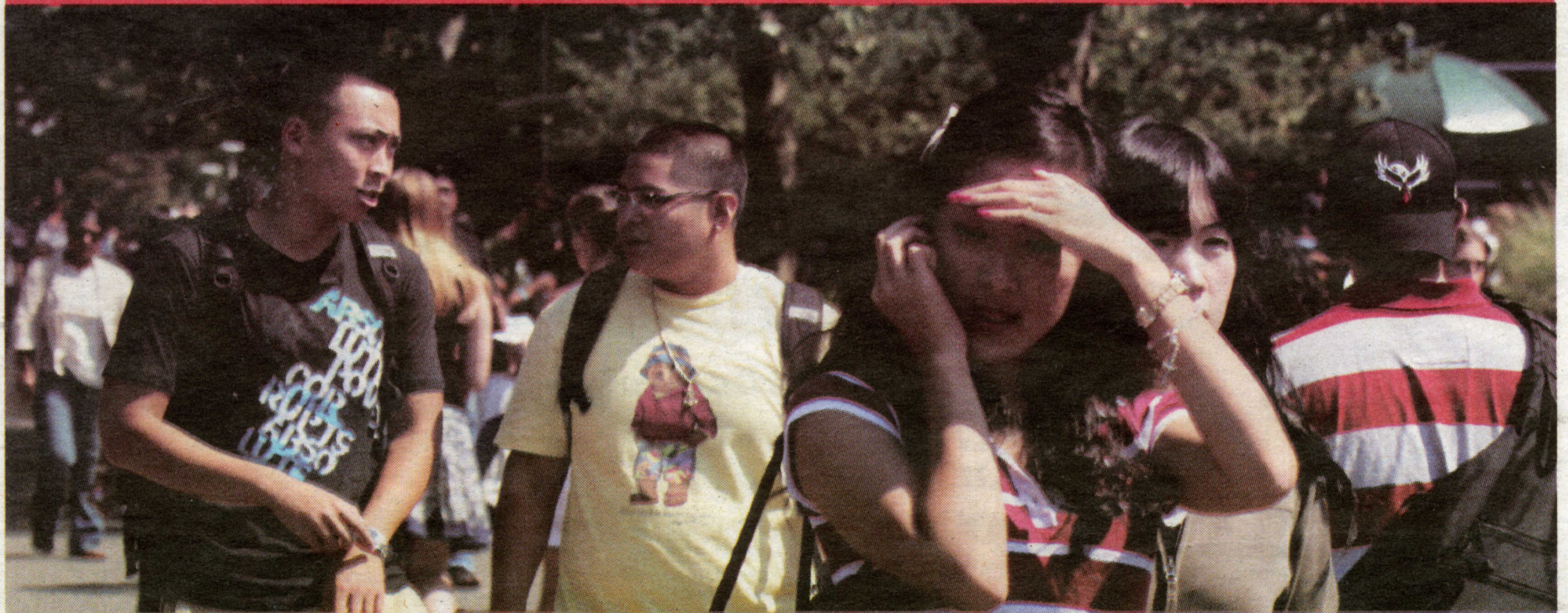


THE STATESMAN



Freshman Survival Guide 2008



What's Inside...

The In's and Out's Of Campus Dining pg. 9

The Pros and Cons Of Dorming On Campus pg. 11

A Closer Look at SINC Sites pg. 11

The New Heritage Inn

At Port Jefferson Harbor

WALKING DISTANCE TO:

- Village Shopping
- Restaurants
- Park and Playground
- Nightclubs
- Sport Fishing and Boating
- Port Jeff/Bridgeport Ferry

DRIVE IN MINUTES TO:

- Port Jeff Train Station
- Stony Brook University
- Mather & St. Charles Hospitals
- Islip/MacArthur Airport



OUR ROOMS FEATURE:

- Color Cable TV
- Telephone with Dataport & Voicemail
- Internet Service
- Efficiency Rooms Available

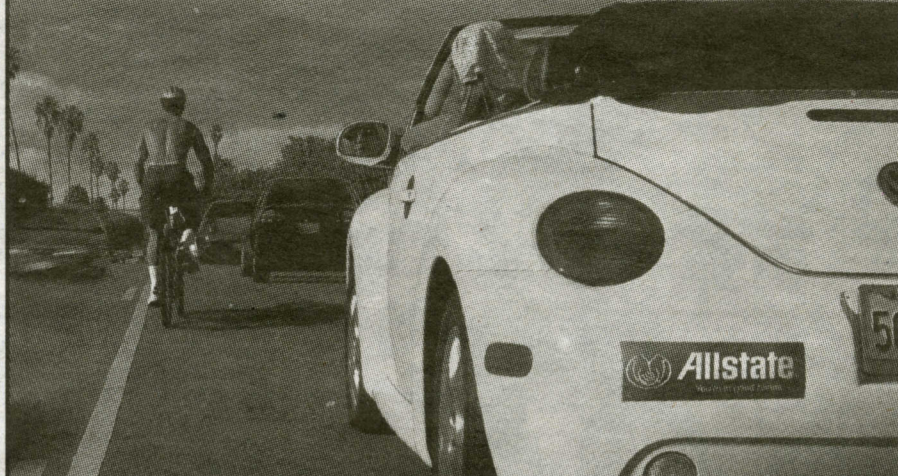
SPECIAL WEEKLY RATES

631-473-2499 • www.portjeffheritageinn.com

201 West Broadway • Route 25A • Port Jefferson

(Across from Harbor)

If you're a safe driver,
you should pay less.
That's our stand.



Call me today. If you're a safe driver,
I can help you save money on your car insurance.
(631) 689-7770

Simon De Souza MBA

1320 STONY BROOK RD
STONY BROOK
simon@allstate.com

Call or stop by for a free quote



Allstate.
You're in good hands.

Discount and insurance offered only with select companies and subject to availability and qualifications. Discount amount may be lower and applies to most major coverages. Discount applies to most major coverages. Allstate Insurance Company and Allstate Property and Casualty Insurance Company: Northbrook, IL. ©2004 Allstate Insurance Company.

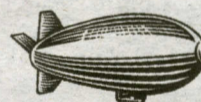


Morris on Campus

Life According to an Upperclassman



Forming a
world view starts by
having enough money
to see the world.



For more free financial life lessons, like how to get the
Student Package with free checking,* a savings account with
Keep the Change** and Online Banking Service, check out my
online show at bankofamerica.com/oncampus

Bank of America
Bank of Opportunity

15 Bennetts Road 631.751.6601
3080 Middle Country Road 631.585.1701

*CampusEdge® Checking is free of a monthly maintenance fee for five years while you are a student. Student status will be validated upon account opening. After the first five years, your CampusEdge Checking account will be automatically upgraded to MyAccess Checking®. The monthly maintenance fee of \$5.95 for MyAccess Checking will be waived as long as you have a monthly direct deposit. Fees for overdrafts and other account-related fees still apply. **You must open both a new personal checking account and a new Regular Savings account (referred to as "Linked Rate Market Savings" in ID and WA) at the same time, sign up for our Keep the Change service, and use your check card to make a purchase within 90 days of account opening. This offer does not apply to current Bank of America customers or existing accounts. We may change or terminate this offer at any time. The monthly maintenance fee (referred to as "monthly service charge" in CA) waiver on your Regular Savings account begins after your first Keep the Change transfer from your new personal checking account to your new Regular Savings account. Excess transaction fees on Regular Savings still apply. See our Personal Schedule of Fees for information about these accounts and our Keep the Change service. Keep the Change, Patent Pending. Bank of America, N.A. Member FDIC. © 2008 Bank of America Corporation.

THE STATESMAN

Volume 52, Issue 2

Thursday, September 4, 2008

sbstatesman.org

ARTS & ENTERTAINMENT: 7

Book Review: Twilight

SPORTS: 15

Men's Soccer Starts Slowly

ARTS & ENTERTAINMENT: 7

Poet's Corner: Is It Money, Summer?

SPORTS: 15

Volleyball Wins Two Of Three Matches

SPORTS

Stony Brook Brushes Away Colgate

On a night when the Seawolves ran wild over Colgate's porous run defense, two new additions and a familiar face led the offensive charge.

>>PAGE 19

Women's Soccer Off To Tough Start

The Stony Brook women's soccer team began its season with high expectations. Although they've proceeded to lose two out of their first three games, they are still confident in where they believe their season is headed.

>>PAGE 19

OPINION

How To Avoid Cold War II

From the moment when the United States condemned Russian involvement in the Georgian conflict, it became apparent that that we were in for a rough ride. Despite existing tension with Russia, and long term tension with the Soviet Union before that, United States politicians, speaking through the White House, continue to insist on taking sides in a conflict that isn't ours.

>>PAGE 11

Obama, You Can Call Me Sweetie

A few months ago on his campaign trail, Barack Obama was asked by reporter Peggy Agar's about how he was going to help American autoworkers if elected. His response to the female reporter; "Hold on a second, sweetie."

>>PAGE 13

Ammonia Leak In Chemistry Building Threatens Occupants

BY AISHA AKHTAR
Photo Editor

The first day of classes proved more eventful when the Chemistry building was evacuated because of an ammonia gas leak. Suffolk County and campus safety teams responded immediately to the emergency and the situation was resolved a couple hours later.

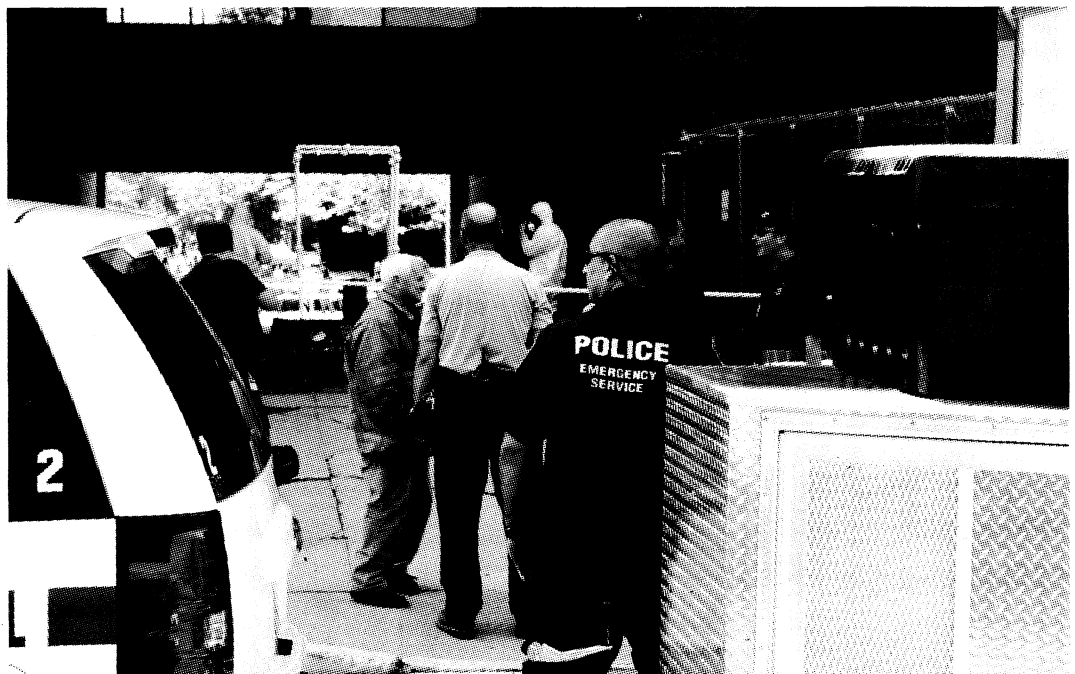
"At 11:05 [a.m.] we received a call that there was an ammonia type fume," said Doug Little, interim chief of University Police. "The cylinder holding ammonia may have had a valve that was loose."

Ammonia solutions with more than 50% ammonia are classified as a Toxic Inhalation Hazard. It is a corrosive alkaline solution, which will burn at contact whether swallowed, inhaled, or absorbed.

Many of the chemistry faculty members waited outside while the problem was being solved.

"The ammonia tank brought a leak to the fifth floor," said chemistry professor Robert Kerber. "Someone pulled the fire alarm and we had to evacuate."

"I can't remember anything like this happening [before],"



Aisha Akhtar / SB Statesman

Emergency officials respond to the ammonia leak in the Chemistry Building on Sept. 2.

said chemistry professor Frank Fowler. "We will probably have to come up with new policies when these kinds of things happen."

"I got a call from Professor [Daniel] Raleigh from the sixth floor because the service chase smelled like ammonia," said Director of Laboratories Alvin Silverstein. "Then, Professor [Philip] Johnson from the fifth floor called to tell ammonia

from the tank was leaking. The smell was so strong that as I reached the fifth floor I didn't even open the door."

"The only way to evacuate a building is via fire alarm," Silverstein said. "We don't have a P.A. system. If we did have a P.A. system, we would be able to properly inform everyone of what was going on and tell them which exits to evacuate from."

Silverstein was the one who pulled the fire alarm.

"I called the University Police, and the safety specialists were all here within a short time," Silverstein said. "They were all over in about five to 10 minutes. I pulled the alarm at their request, but the only problem with pulling the alarm was that the alarm shuts down

Continued on page 5



Bradley Donaldson / SB Statesman

Emergency officials were quick on the scene when the Chemistry building occupants discovered an ammonia tank in building was leaking.

Roth Dining Renovations Nearing Completion

BY CARSON DANCE
Contributing Writer

Long lines at the Student Activities Center (SAC) cafeteria have been the source of many student complaints. Some attribute the problem to the recent overcrowding of the school, but the problems are nothing new.

When the SAC was first constructed, it was not intended to be the central point of campus. The Union was originally planned to be the main place where students could eat during

the day. But given the proximity to the buses and Academic Mall, the SAC hasn't been able to efficiently meet the needs of all the students.

The Faculty Student Association (FSA), in charge of campus dining, has attempted to make other options more appealing to alleviate some of the pressure on the SAC. Some changes include the renovation of the Union last year, and the same is now being done to Roth

Continued on page 5

EXPRESS YOURSELF WITH HP.



#524867

\$848

HP Pavilion dv9819wm Entertainment Notebook PC

Technology and fashion for your mobile, digital lifestyle

- 3GB (max. 4GB¹) system memory for smooth performance
- 160GB hard drive for your digital media²
- AMD Turion™ X2 TL-62 Dual-Core Mobile Processor for fast, powerful mobility
- 17" diagonal display for high-definition movies and photos³
- Chat face-to-face online with the integrated webcam⁴

HP Wireless Laser Mini Mouse

\$39⁸⁸



Wireless technology for freedom of movement

#521215 (black)
#521179 (pink), #521201 (turquoise)

HP 20" Widescreen LCD w2007 Monitor



#501977

- 20" diagonal viewing area
- 16:10 widescreen aspect ratio—ideal for movies or viewing documents simultaneously
- Great performance with 5-ms response time; 1000:1 contrast ratio
- Integrated rear-facing speakers to reduce desk clutter

\$278



#533376

\$69⁹⁷

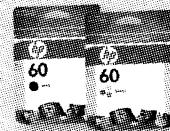
***Rollback**

HP Deskjet F4240 All-in-One Printer

One machine can do it all—and save you serious money.

- Print, scan, copy and fax—quickly and easily.
- ENERGY STAR® compliant for power efficiency

DON'T FORGET.



#524804, #524811

HP 60 Black and Color Ink Cartridges

\$15⁹⁷ - \$18⁶⁸

More pages, great reliability, amazing value.
Original HP.



#521819

HP Premium Photo Paper

\$15⁶⁷

4x6,
glossy finish,
100 sheets



Available at
Walmart
Save money. Live better.

South Setauket - 3990 Nesconset Highway, (631) 474-3287

Walmart.com/hp

Prices valid while supplies last. See product package for complete specifications and details.

¹4GB memory: Up to 1GB may not be available due to 32-bit operating system resource requirements.

²For hard drives, 1GB = 1 billion bytes. Actual formatted capacity is less.

³High-definition content required for HD performance. ⁴Internet access required and sold separately.

© Copyright 2008 Hewlett-Packard Development Company, L.P. The information contained herein is subject to change without notice. The only warranties for HP products and services are set forth in the express warranty statements accompanying such products and services. AMD Turion is a trademark of Advanced Micro Devices, Inc. ENERGY STAR is a U.S. registered trademark of the United States Environmental Protection Agency.

Ammonia Leak In Chemistry Building Threatens Occupants

Continued from pg 1

most of the fume hoods and air handlers which supply fresh air to the buildings."

Campus and some local fire marshals were well geared to enter the toxic gas environment.

"Our building manager, Mike Teta, gave them the master key and a large crescent wrench with the thought that the main valve wasn't fully closed," Silverstein said. "We didn't know what to expect."

"They took pictures and identified that one of the fittings cracked near the gas regulator," Silverstein said. "The big mystery is why it cracked. We speculate that someone banged into it and after some time it slowly got larger."

The tank had a 100-pound capacity, approximately, and carried both liquid and gaseous ammonia. Ammonia becomes a liquid at low pressures, and so the upper part of the tank carried gas and the lower part carried liquid. There were two openings, one for each state of ammonia as needed.

"Some experiments need liquid ammonia in a very con-

centrated form. It's not what you go out and buy at the store," Silverstein said.

For the future, current effective safety regulations will need to be enforced even more. "We need to remind people to shut the main valve when chemicals are not being used," Silverstein said. "And also chemicals that have not been used in three years need to be disposed, and the University is very generous to cover the cost of this." In this case, the ammonia tank did not belong to any active research group, and was not being used for research purposes as intended.

The Environmental Health and Safety Department is working on removing the tank and its contents. The tanks are usually returned to the manufacturing company, while the chemicals are disposed of at a separate facility. Stony Brook has a contract with Triumvirate Environmental for the disposal of wastes.

The tank is currently being stored in a walk-in fume hood till further action. "It's being checked multiple times to see if it is free of leaks," Silverstein said.

Contract With Chartwells Extended Until Summer 2009

By CHOTALI GOMES
Contributing Writer

The ten-year contract with the food-service provider Chartwells and Stony Brook University was originally set to end this year, but has been postponed by "one additional year," extending the contract until June 30, 2009, according to Angela Angello, the director of marketing and communications Faculty Student Association.

Campus dining heavily relies on Chartwells, a division of Compass Group USA, which claims to be the "leading foodservice provider" in North America, basing its menu on healthy alternatives "for a healthy lifestyle."

The FSA is responsible for choosing the contractor that provides the West Campus dining services. However, while Chart-

wells is responsible for the West Campus, the FSA independently runs the dining at the Medical Center and Stony Brook Southampton. Jasmine in the Wang Center is not included in this contract.

Chartwells is still in business for at least one more year "in order to provide an opportunity to better evaluate meal plan options, relative to changing needs of the student body and the University's master plan and...for expansion of dining services in both the center of campus and residence halls," said Agnello in an e-mail.

When the bidding begins, which is undetermined for now, Aramark may re-emerge as a potential bidder or Sodexo Inc., and perhaps the decision may be to renew the contract and stick with Chartwells.

Roth Dining Renovations Nearing Completion

Continued from pg 1

Quad's dining hall.

The Roth Cafeteria originally opened in 1966, and since then, has served over 25 million meals. The dining hall was originally designed with two lines serving the meal for the day, according to the Roth food court renovations website. It had been updated since its original construction, with the addition of Kosher Dining, Burger King, and additional serving lines.

The need for a better and larger space as well as the aging of the building led to the complete renovation of the space. Money for the renovation comes from the facility fee paid as part of every student's meal plan. Almost \$300 of the basic resident meal plan goes towards this fee, which pays for maintenance and renovation.

The renovation was first planned for 2003, but the closing of the dining hall and renovations didn't begin until the end of spring semester in 2007. Construction was supposed to take

one year with the new facility opening in the fall of 2008.

Now, with the start of the new year, many students are anxious to see Roth re-open. The construction is mostly finished, and the facility is being tested by the Health Department.

After approval, the staff will undergo training, including a nationally mandated Wendy's program. The workers who staffed Roth before the renovations were relocated to other venues during the construction, and the workers will again be redistributed to fill the needs of the new cafeteria.

In addition to Wendy's, the new Roth cafeteria will offer made-to-order subs, pizza, an International Market, and Pura Vida coffee and tea.

Once the cafeteria opens with its own unique food choices, FSA hopes that Roth will take some of the pressure off of the SAC.

The SAC will no longer be the closest option for those living in Roth Quad and the newly renovated dining area will provide another lunchtime alternative

for hungry students, faculty and staff.

But students should also try out the many other cafeterias available on campus. The Union Deli Commons offer some delicious ethnic choices, and Jasmine at the Wang Center offers a wide variety of Indian, Chinese and Japanese cuisine. Wolfie's restaurant on the second floor of the Union building offers full courses and the dining experience to students but there have been mixed reviews.

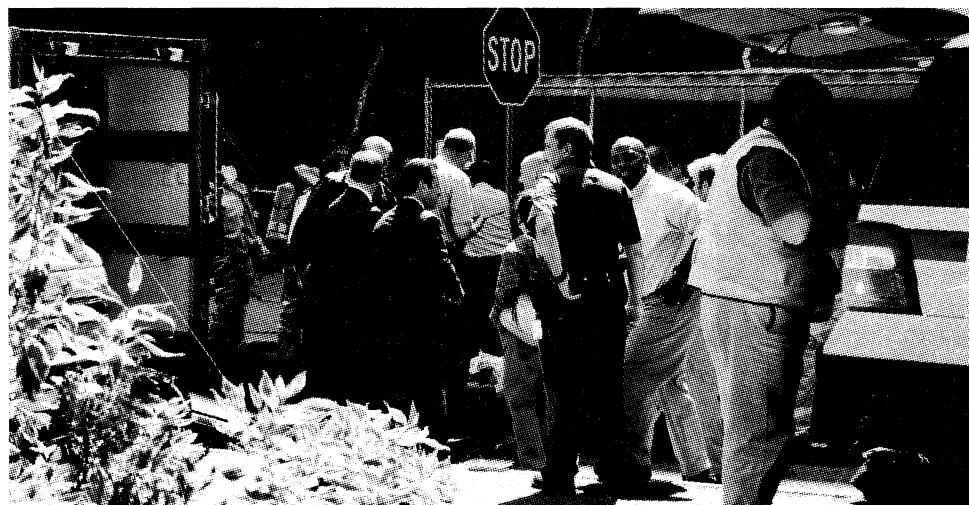
Kelly Quad is famous for having long hours, and even operates 24/7 for five days out of the week. Weekend brunches are delectable and the Kelly Coffee and Teahouse is a favorite among students.

Tabler and H-Quad both have their own dining options with a string of options such as Dunkin Donuts and Taco Bell. Finally, there are campus dining carts all around the campus such as in the Life Sciences building. Students with classes at the hospital can enjoy tasty and cheap meals.



Roth Quad Renovations still in progress.

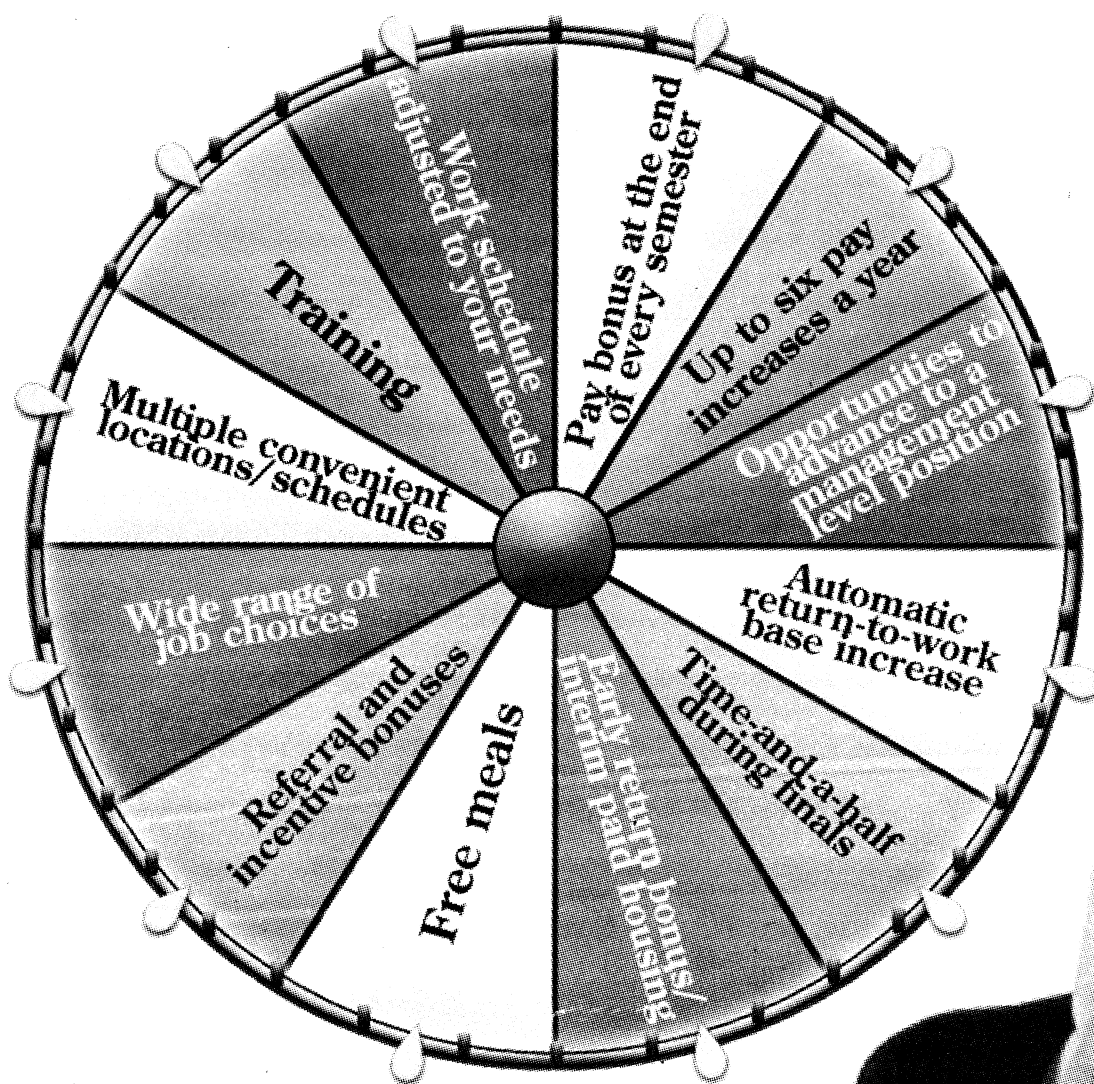
Cher Armstrong / SB Statesman



Emergency officials respond to the ammonia leak in the Chemistry Building on Sept. 2.

Aisha Akhtar / SB Statesman

Take the Guess Work Out of Choosing Student Jobs



***Why gamble
when you can
have it all!***

When it comes to student jobs, dare to compare!

FSA Student Staffing Resources

Call 632-9306

www.campusdining.org



twilight

PUBLISHER:
LITTLE, BROWN BOOKS FOR YOUNG READERS

By AISHA AKHTAR
Photo Editor

Love at first sight- if it only happened to everyone.

Don't let this 434-page novel daunt you; it's a really easy read. This book is meant for all kinds of readers, because the story line is not directed to one specific genre. It offers romance, fantasy, and fiction with a good balance. Clearly, the underlying force of the romance is based upon a "you want what you can't have" kind of scheme. If that's the kind of romance entertainment you seek, this is the book for you.

In a nutshell, seventeen-year-old Bella Swan has found the love of her life. The only problem is that he is a vampire. Bella is allured to the mysterious and divinely beautiful Edward.

Other than that, the story moves really slowly. Every event is drawn out, leaving the reader in suspense. I suppose this is a good thing, but I was usually disappointed with the resolution of the conflicts. Regardless, you will be compelled to read the whole series to know how Bella and Edward end up. You want to

know if Bella will eventually become a vampire and spend eternity with her soul mate.

Personally, I don't see what the whole hype is about- the book is poorly written. While the author does a great job of elaborating on details and creating a picture for the reader, she is unable to set a proper mood. You can imagine the characters and the scenery, but you are unable to grasp the emotion of the moment. I feel like there are many moments between Bella and Edward that are intended to be passionate or extremely angry, but I am unable to obtain that kind of sense. This is probably due to the fact that the book is written from Bella's perspective, and we never know what is going on in any of the other character's minds. Moreover, Edward is a difficult character to read, which leaves the reader in doubt about his intentions.

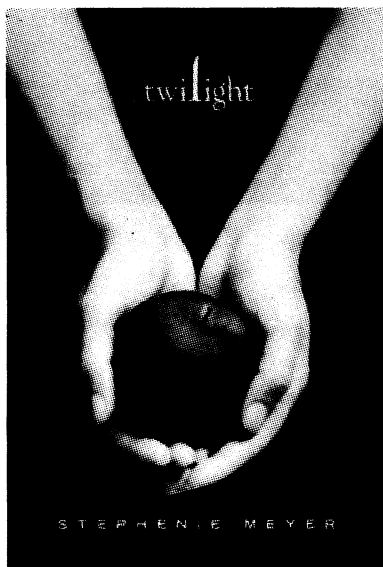
If there was more dialogue, then perhaps readers could get a better idea of what the moment is like. Perhaps the movie, slated for release on November 21 of this year, will take care of this problem. The previews have been impressive and its because of them that I picked up the book. I hope the movie is heavily based on the book so I can have a better image of how the characters felt at certain key points throughout the story.

Some have compared Twilight's popularity to Harry Potter. I would say Harry Potter is more enjoyable to read because of his zany adventures and unbelievable epiphanies. Some of the conflicts in Twilight seem easily avoidable and

carelessly caused by the characters. For example, there was one part where Bella was wandering in the outskirts of a town all alone, deliberately away from where her friends were. She was simply asking for trouble, and before long, four men approached her. Miraculously, Edward was there to save her, but that's aside from the point. There

was no valid reason for Bella to be wandering where she was, and it was a sappy forced way for Edward to look like a hero. It's almost like Meyer had to place in these types of scenes to enforce the love between Edward and Bella. She never used lustful dialogue, but relied on unrealistic catastrophes to illustrate the point that Edward and Bella were in love.

The greatest conflict in the story came out of nowhere. There was a clan of human-feeding vampires that were hunting and they made it their goal to hunt Bella. Why? I have no idea. There really wasn't any special or legitimate reason to hunt her except for the fact that they "saw her as a challenge." Of course it had to happen to her for after all she was the protagonist of the book. That's why everything happened to her. Meyer just needed to give more reasons why.



Courtesy of Amazon.com

is it money, summer?

i don't want your money...
at night give me the music of the crickets
for us to sit together to make fun of them and to mimic
be the warm pearling sun on a gloomy day
for me to be able to look into and for my eyes to be okay
electricity?
show me the lighting bugs
be my night and give me lovable hugs
water?... come away with me outside
when the rain falls hard and the sky for us has opened itself so wide
time? with me forever would be like flying into the wind of colorful space
with fingers, would never get tired of outlining your face
entertainment? id tell you bed time stories of finger tips
and you could tell me stories of juicy lips
food?
i could live off chocolate, all the time, every day
winter would come and with just one another, we'd be okay
needed the humming of your heartbeat in my ear
my core simply needed your manly voice to hear
i just needed your time your body and your mind
but
i guess, im simply too expensive for you...
i was mistaken
i thought you were made for me and i for you
your loss

written by: madgestic



Do You Need to Prep for the
GRE, GMAT, LSAT or MCAT?

Don't Wait!

You Can Get The Score You
Need, Guaranteed with The
Princeton Review

Is the GRE, GMAT, LSAT or MCAT in your future?
Our test preparation programs help you master content,
build skills, and learn proven test-taking strategies. We
offer dynamic instructors, more hours, effective classes
and a satisfaction and moneyback guarantee.

Stony Brook Start Date

GRE	Sept. 6
GMAT	Sept. 14
LSAT	Sept. 21
MCAT	Sept. 17

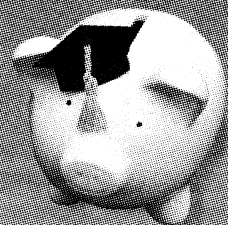
Secure your spot! Enroll online or by phone today.

**The
Princeton
Review**

800-2Review • PrincetonReview.com

TUTORING • SMALL GROUP TUTORING • CLASSROOM COURSES • ONLINE PROGRAMS

Win
\$30,000



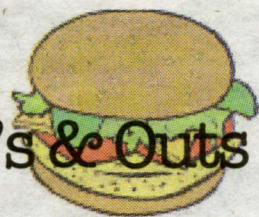
for your
first year of
grad school!

Enter online at
www.PrincetonReview.com/YouPlayWePay

NO PURCHASE NECESSARY. Sweepstakes starts August 6, 2008 and ends January 1, 2009. Open to residents of the 50 United States and D.C., and Canada (excluding Quebec) 18 years of age and older who are currently enrolled in, or have graduated from, a four-year accredited college or university. Persons currently or formerly enrolled in a graduate school program are not eligible. Enter online at www.PrincetonReview.com/YouPlayWePay or at selected Princeton Review informational tables on college campuses. Prizes: One (1) Grand Prize: \$30,000.00 to use towards your first year of graduate school tuition and expenses, plus a Princeton Review Graduate School Test Preparation Course of your choice. ARV: \$31,899. Ten (10) First Prizes: a Princeton Review Graduate School Test Preparation Course. ARV: \$999 to \$1,899. Total prize value: up to \$50,889. Values stated in U.S. Dollars. Odds of winning depend on number of entries received. In order for Canada residents to win, entrants must also correctly answer a time-limited mathematical skill-testing question without assistance or mechanical or electronic aid. Subject to additional restrictions contained in Official Rules, available at above website. Void where prohibited. Sponsor: The Princeton Review, Inc. New York, NY 10024. Test names are the trademarks of their respective owners who are not affiliated with The Princeton Review. The Princeton Review and The Princeton Review logo are trademarks registered in the U.S. Patent and Trademark Office by The Princeton Review, Inc. which is not affiliated with Princeton University.

AD: LISB10908!

The Dining In's & Outs



Food is perhaps the second most critical aspect of college life behind Facebook (followed by academics, of course). Though many associate college food with unidentifiable mush and burgers so greasy the buns are saturated, Stony Brook's options are so broad, there is something for everyone.

The Union Commons has been revamped within the last year. Three years ago it was The Bleacher Club, and essentially offered the same items as the SAC, just in a smaller area with less seating. The Faculty Student Association made over the Union dining facility last summer, and now offers a variety of options for lunch and dinner. Blue Agave has fresh ingredients to fix your Mexican cravings, Coyote Jacks has good burgers, though the fries and onion rings tend to be soggy, and Bamboo provides a Chinese food outlet if Jasmine is packed.

The Union Deli is great for sandwiches, and with Boar's Head cold cuts, the meats are actually edible. Candy by the pound, five coolers for drinks, ice cream and a mini-grocery make it a one-time stop for stocking up a dorm fridge. For those keeping kosher, Delancey Street is the place to go, though its kosher foods keep prices high and meal plans running low. Seating can be hard to find during the lunch rush in the Union, but the ballroom is open and has additional seats. Kelly Dining Center is also a good option for lunch - though it is a longer walk from the Academic Mall, the lack of crowds and long lines is worth the trip. It also has a full deli, Blue Agave, Portabella's pizza, a salad bar and small market.



The Student Activities Center, or SAC, is the epicenter of dining services on campus. Hungry students from West Apartments to H Quad flock to the SAC during peak lunch hours, and the cafeteria subsequently turns into a madhouse between 11:00 a.m. and 2 p.m., particularly during Campus Lifetime on Wednesdays. The SAC is guaranteed to be packed in the middle of the

day, so unless a line that wraps around the perimeter of the seated dining area sounds appealing, find somewhere else to eat during lunch. Otherwise, the SAC is a perfect pit stop for an in between class snack or dinner with friends. The pizza is decent, the sandwiches are made to order, and some of the daily specials are delicious.

Roth Food Court would also prove helpful to those during lunchtime, as it is relatively close to the Academic Mall. Unfortunately, the renovations have not yet been completed, though the Faculty Student Association assures it will open in the coming weeks. When it opens, Roth Food Court will have a Wendy's, sandwich station, an organic and fair trade coffee bar, and, yes, a pizza place.

Jasmine, located in The Wang Center, is the number one spot for all Asian cuisine. A wide selection of Indian, Thai, Chinese and Japanese food makes it tough to decide on a meal when the line is pushing along during lunch and dinner hours. The vegetable dumplings and rice noodles are both savory and filling, while the chicken tikka masala is lacking, with enough white rice, naan and extra curry sauce, it can be supremely tasty. Beverage-wise, Jasmine offers multiple flavors at its bubble tea bar, and has refreshing fruit and berry bottled teas stacked away in the small coolers by the registers.

Safety & Security Campus Musts

Dorming at a large university is a bit like living in a small city. With nearly 9,000 residents and an undergraduate body of more than 15,000, new students can easily get lost in the in the sea of people already living and working at Stony Brook. But once the semester starts rolling and students become more comfortable of campus life, they should remember one key point: personal safety and security.

It's true that those late night parties can be fun, especially after a hectic week but students must remember that one bad apple can spoil the basket. New students should be diligent about where they are, who they are with and the fastest routes to safety.

Students should remember to lock their rooms. Doors should never be propped because this is when most accidents do occur.

Even diligent students studying late at night in the library should remember a few key numbers to call if they are alone and walking back to their dorms;

Residential Safety Program (RSP): Operated by Campus Residences, students can call the RSP for escorts during the long walks home. Escorts are Stony Brook students and they can provide very pleasant conversation, based on our experience. Dressed in pretty tacky outfits of bright neon, they provide security in numbers. RSP only operates from 8 AM to 3 AM so students will not be able to contact any escorts during these times. But on weekends, they operate 24 hours. Students can call RSP at (631) 632-WALK.

Another option that late-owls can take advantage of on campus is the university's Ride program. From "Dusk to Dawn," which basically

means after sunset and before sunrise, university police officers will squirrel students to and from their destinations. Usually, students are only sent to their dorms but if you get lucky, some officers are willing to send students to other destinations on campus such as the railroad station. (They've cracked down on this and 90% of time, this is no longer an option.) However, the school's university program has one glaring problem, students may have to wait, and a long time at that. From our experience, officers may come within 5 minutes of the call, but some have taken even longer; almost an hour during busy nights. And the officers do not give specific times of their arrival. They expect you to be at the agreed destinations by the time they arrive, so if they're late, you have no option but to deal with it. And during the longer winter nights in January, this can be unbearable. Interested students can call (631) 632-RIDE.

During emergencies, students can either call 311 or 911 on any campus phone but not on your cell phone guys! If you do, you will be calling the Suffolk police, who eventually directs you to the campus police, and this could take longer. On cell phones students should call campus police at (631) 632-3333. So save these numbers and keep them charged guys! If you're near one of the many blue light emergency phone locations, press the large red emergency button. Supposedly, the police response time is one minute.

Other key numbers include:

* Environmental Health & Safety: (631) 632-6410

* University Police: (631) 632-6350

* Weather-related Information/Closings: (631) 632-SNOW; 444-SNOW



New York, we've got you covered.



**SONY ERICSSON
W350
\$29.99**

AFTER MAIL-IN REBATE

Pay \$79.99 and after mail-in rebate, receive \$50 AT&T promotion card.* \$20/month feature package purchase and 2-year wireless service agreement required.

1.3 megapixel camera with 4X zoom
AT&T Mobile Music™



**LG SHINE™
\$49.99**

AFTER MAIL-IN REBATE

Pay \$124.99 and after mail-in rebate, receive \$75 AT&T promotion card.* \$20/month feature package purchase and 2-year wireless service agreement required.

MusiciD and XM Radio capable

Multimedia picture and video messaging



**PALM® CENTRO™
\$69.99**


AFTER MAIL-IN REBATE

Pay \$169.99 and after mail-in rebate, receive \$100 AT&T promotion card.* \$20/month data package purchase and 2-year wireless service agreement required.

Full QWERTY keyboard and 2.2" touchscreen display

Personal and business email access

*AT&T promotion card valid wherever major credit cards are accepted and for 120 days after issue date. May be used to pay wireless bill. Not redeemable for cash and cannot be used for cash withdrawal at ATMs or at automated gas pumps.

The new  **at&t**
Your world. Delivered.

FREE SHIPPING | 1.866.MOBILITY – ATT.COM/NYNJ – VISIT A STORE

Students, faculty, and staff, ask about special discounts.

*AT&T also imposes monthly a Regulatory Cost Recovery Charge of up to \$1.25 to help defray costs incurred in complying with State and Federal telecom regulation; State and Federal Universal Svc charges; and surcharges for customer-based and revenue-based state and local assessments on AT&T. These are not taxes or government-required charges.

3G not available in all areas. Offer available on select phones. Limited-time offer. Other conditions & restrictions apply. See contract & rate plan brochure for details. Subscriber must live & have a mailing addr. within AT&T's owned wireless network coverage area. Up to \$36 activ. fee applies. Equipment price & avail may vary by mkt & may not be available from independent retailers. **Early Termination Fee:** None if cancelled in the first 30 days; thereafter up to \$175. Some agents impose add'l fees. **Unlimited voice services:** Unltd voice svcs are provided solely for live dialog between two individuals. No additional discounts are available with unlimited plan. **Offnet Usage:** If your mins of use (including unltd svcs) on other carriers' networks ("offnet usage") during any two consecutive months exceed your offnet usage allowance, AT&T may at its option terminate your svc, deny your contd use of other carriers' coverage, or change your plan to one imposing usage charges for offnet usage. Your offnet usage allowance is equal to the lesser of 750 mins or 40% of the Anytime mins incl'd with your plan (data offnet usage allowance is the lesser of 6 MB or 20% of the KB incl'd with your plan). **AT&T Promotion Card:** Offer valid until 11/16/08. Allow 60 days for fulfillment. Card request must be postmarked by 11/16/08; you must be a customer for 30 consecutive days to receive card. **Feature/data package** may be cancelled at any time. **Sales tax** calculated based on price of unactivated equipment. Service provided by AT&T Mobility. ©2008 AT&T Intellectual Property. All rights reserved. AT&T, the AT&T logo, and all other marks contained herein are trademarks of AT&T Intellectual Property and/or AT&T affiliated companies. All other marks contained herein are the property of their respective owners.



Campus Housing

Living on campus has its many pros and cons. Aside from the close proximity to academic buildings and the main hubbub that is West Campus, the residence halls and apartments offer the inclusiveness of a strong student community and plenty of opportunities for your typical college social life.

Underclassmen (U1 or U2 standing) usually live in one of the six quads that each has four buildings with the exception being H Quad, which has only three buildings. Upperclassmen (U3 or U4 standing) who qualify may opt to live in the West Apartments.

Each quad is known for a unique trait. H Quad is the only quad with three buildings instead of four- Benedict, James, and Langmuir. All buildings in H are corridor-style and James College is the cooking building in the quad. The Residential Sinc Site in H is located in Benedict. H Quad and neighboring Mendelson Quad are known for their similar appearances and large rooms. Mendelson rooms are older than H rooms as H Quad was the first quad to be renovated. Mendelson Quad is slated for renovation next year.

Tennis lovers rejoice. H is home to two tennis courts (behind Langmuir) but note that one of the courts share space with a basketball court. There is open space between all three buildings, just right for touch football, stargazing and running around. Dance crews gather at Benedict's atrium for practice, not just for its comfortable space but probably also for its perpetual cold temperatures. Mendelson's field is between Amman and Gray Colleges and you'll find students playing sports there too.

Roth Quad is home to Roth Pond, air-conditioned (but small) rooms, and Roth Food

Court (currently under renovation with its grand opening delayed again- cross your fingers for next year!). The pond is filled with countless fish and aquatic organisms (the running joke that they're all radioactive and mutated).

Across the street from Roth is Tabler Quad, which was recently renovated this summer and is home to the Tabler Center for the Arts. It is affectionately known as TAC by some residents and is home to random band jams, piano rooms, small student art exhibits, and a Media Lab, outfitted entirely with Macintosh computers. Tabler has a small field in the center of the quad, just right for sunning and a pick-up wiffleball game.

Next door to Tabler is Eleanor Roosevelt Quad, sometimes referred to as ERQ. A new residence hall is going up in Roosevelt in the spot that used to house a theater house and a Roosevelt Cafe;. Roosevelt is corridor-style, home to a diverse group of students, and plenty of pick-up soccer games in the quad's cement square.

Finally, Kelly Quad is widely favored by students for its dining hall with Kelly Coffee and Tea House on the ground floor and assorted options upstairs. Kelly's balconies set them apart from all other residence halls. The balconies encircle a small forest of trees, shrubs and cement - the best place for a game of tag and marco polo.

Students in residence halls may choose to and are encouraged to participate in their building's Hall Council, which is entirely student-run. Hall Councils plan, allocate, and organize building activities, participate in quad-wide events and programs, and are represented at Residence Hall Association meetings by their respective RHA Reps.

Campus Residences Staff to contact include Resident Assistants (both undergraduate and graduate RA's), Residence Hall Directors (RHD's)

To submit work order requests online:
<http://www.studentaffairs.stonybrook.edu/workrequest/wlmain.asp>

Campus Residences' FAQ page:
<http://www.studentaffairs.stonybrook.edu/faqs/index.php>

What's a SINC site again?

Many students use the various SINC sites on campus to print out some last minute lecture notes, check their e-mails or just kill time in-between classes. For commuter students the SINC sites become their only way to print out what they need while on campus if they do not have access to a friends dorm room.

A SINC site is basically a computer lab. These labs are spread throughout the campus in different buildings such as the main floor of the Melville Library, the third floor of Harriman Hall, the fourth floor of the Chemistry building, the first floor of the Engineering building, the sixth floor of the Social and Behavioral Science building, the basement of the Union building and various other places on campus. A full listing along with their hours of operation can be found at: <http://moya.ic.sunysb.edu/Sinc/>

During the day the SINC sites fill up quick. The most popular one being the main floor of the library where students can be seen snaking in and out of isles ready to lunge for an open seat if anyone gets up.

During the middle of the day it is best to use the Union SINC site because there is usually an open seat to be found. This SINC site is equipped with 42 XP PCs, 16 dual boot OSX iMacs, 13 OSX iMacs, 4 PC scanners, 2 Mac scanners, 2 walk-in print stations, 2 release stations and hookups

for laptops as well.

Since so many people use the SINC sites on a regular basis, there is a printing quota per person per day. Each user is limited to about 40 pages per day. If you use up your quota in one day you will not be able to print in any SINC site until the next day. Printing double sided is recommended for the maximum use of the quota.

If the quota is not met, the unused pages rollover until the next day. The quota is then reset on Monday and Saturday.

Once a user hits print on their computer, they must walk over to a release station, usually Pharos and identified by a blue sign where they must put in their ID number and password, before the station will print.

There is no color printing in the SINC sites and using your own computer paper is not allowed.

When printing lecture slides, hit print, go to handouts on the menu, and hit 6 slides per page for maximum use of the quota. You can adjust this to any number of slides on a page depending on how many notes you take and how large you want the slides.

There is no eating or drinking in the SINC sites and staff members do come around to check.



Courtesy of Stony Brook University

Got Clips??? Then what are you waiting for? Join us at the Statesman!!! Rm 057

OPEN A CHASE COLLEGE CHECKINGSM ACCOUNT AND GET \$25

AFTER COMPLETING 5 QUALIFYING PURCHASES
WITH YOUR CHASE DEBIT CARD¹.

TO OPEN AN ACCOUNT AND ENTER SWEEPSTAKES,
VISIT YOUR PARTICIPATING CAMPUS BRANCH TODAY.

COULD YOU
WIN \$100
30 WINNERS WILL BE SELECTED
FROM YOUR CAMPUS
ENTER THE CHASE BACK-TO-SCHOOL SWEEPSTAKES

A CHASE COLLEGE CHECKING ACCOUNT INCLUDES:



FREE Online Banking
and Online Bill Pay



FREE Chase debit
card with Zero Liability
protection*



FREE Chase Mobile^{SM†}



FREE access to
over 9,000
Chase ATMs

PLUS, NO MONTHLY SERVICE FEE FOR UP TO 5 YEARS.²

GETTING MORE MATTERS. CHASE WHAT MATTERSSM

CHASE

Chase "Back to School" Sweepstakes Abbreviated Rules

NO PURCHASE OR BANK TRANSACTION NECESSARY TO ENTER OR WIN. NEITHER WILL INCREASE YOUR CHANCES OF WINNING. OPEN ONLY TO CURRENT LEGAL U.S. RESIDENTS WHO ARE 18 YEARS OF AGE OR OLDER AND WHO ARE ENROLLED, AS OF 9/1/08, IN A PUBLIC OR PRIVATE COLLEGE, UNIVERSITY OR TECHNICAL SCHOOL/COLLEGE.

From 8/15/08 through 9/15/08, have a Chase representative enter you online at a participating Chase location: **Setauket- 1395 Route 25A**. Limit one (1) entry per person, household or address, regardless of location. See a Chase representative for Official Rules. All entries become the exclusive property of JPMorgan Chase Bank, N.A. ("Sponsor") and will not be acknowledged or returned.

GRAND PRIZES (30): Each Grand Prize winner will receive a \$100 Chase Gift Card. Odds of winning depend on the number of eligible entries received at the listed location(s). On or about 9/22/08, thirty (30) potential Grand Prize winners will be randomly selected from among all valid entries received. Void where prohibited.

SPONSOR: JPMorgan Chase Bank, N.A., 1111 Polaris Parkway, Columbus, OH, 43240.

\$25 Offer Details

1. Offer expires 9/30/08. Present flyer to a banker when opening a Chase College Checking account. For Chase College Checking accounts a minimum opening deposit of \$25 is required. To qualify for the \$25 bonus, you must make five qualifying purchases (PIN or signature) with your Chase Debit Card within 60 calendar days of account opening. The \$25 bonus will be automatically deposited into your account within four to six weeks of the final qualifying purchase. ATM transactions are not considered a purchase and will not count toward the five purchases. Offer not available on account conversions or in combination with any other offer. Limit one consumer checking account-related reward/premium per customer, per calendar year. Checking account must remain open for six months or the bonus will be debited from the account at closing. Account is subject to approval. Cash bonus may be considered interest reportable on IRS Form 1099-INT.

2. College student must be 17-24 years old to open a Chase College Checking account, and must provide college name and expected graduation date at account opening. No monthly service fee on Chase College Checking until after the expected graduation date (up to five years).

*Chase reimburses you for any unauthorized debit card transactions made at stores, ATMs, on the phone or online when reported promptly.

† There is no charge from Chase, however standard text messaging and other rates from your wireless provider still apply.

©2008 JPMorgan Chase Bank, N.A. Member FDIC.

NOTE TO BANKER: To award bonus, use this E-coupon code - 3335 2928 8151 5944

Editor-in-Chief
Lynn Hsieh

Managing Editor
Bradley Donaldson

News Editor
April Warren

Arts & Entertainment Editor
Yi-Jin Yu

Sports Editor
Gene Morris

Opinion Editor
Zachary Kurtz

Photo Editor
Aisha Akhtar

Copy Editor
Emily Gover

Advertising Manager
Amanda Rosenberg

Business Manager
Frank D'Alessandro

Accountant
Arthur Golnick

First issue free, additional issues cost 50 cents.

GET INVOLVED

Statesman production meetings are held throughout the day on Wednesdays and Sundays in RM 057 in the basement of the Student Union. Anyone wishing to contribute to the newspaper is welcome to attend these meetings.

The Statesman encourages readers to submit opinions and commentaries to the following address:

Stony Brook Statesman
PO Box 1530
Stony Brook, NY 11790

phone: (631) 632 - 6479
fax: (631) 632 - 9128

Email us at:
comments@sbstatesman.org

To view previous issues, extra material, and to learn about how to get involved with the Statesman, visit our website at sbstatesman.org.

For advertising inquiries, call us at (631) 632 - 6479 or visit us online at sbstatesman.org/advertise.

WHO WE ARE

The Stony Brook Statesman was founded as "The Socolian" in 1957 at Oyster Bay, the original site of Stony Brook University. In 1975 "The Statesman" was incorporated as a not-for-profit, student-run organization. Its editorial board, writing, and photography staff are student volunteers while its business staff are professionals.

The Statesman is published twice weekly on Mondays and Thursdays throughout the fall and spring semesters.

Disclaimer: Views expressed in columns or in the Letters and Opinions section are those of the author and not necessarily those of the Statesman. All content Copyright 2008.

How to Avoid Cold War II

By ZACHARY KURTZ
Opinion Editor

From the moment when the United States condemned Russian involvement in the Georgian conflict, it became apparent that that we were in for a rough ride. Despite existing tension with Russia, and long term tension with the Soviet Union before that, United States politicians, speaking through the White House, continue to insist on taking sides in a conflict that isn't ours.

South Ossetia, a Georgian territory populated by ethnic Russians, has claimed independence and is being recognized by Russia as a sovereign nation. The conflict has cooled down after Russia has pulled its troops from the separatist region, but both the European Union and United States are condemning Russia in their involvement and denying Ossetian independence.

Now, it seems Putin and his American counterparts are in a word-slinging contest to see who can be the most petty. Putin claims that the United States provoked conflict in Georgia on behalf of a Presidential candidate; a claim that the White House has dismissed as "patently false." It is, of course, a wild claim, given that most of the American public probably didn't know that a country called Georgia or the region of South Ossetia existed before a couple of weeks ago -- and many of them probably still don't. Still, the fact the United States responded by stating that Russia would face "consequences" if it continued military action in Georgia is worrying.

This coupled with tension caused by the United States's installation of defense technology in Poland, an act which Russia no doubt sees as an act of military escalation at its own doorstep, is cause for concern.

It is doubtful that Russia, the United States or the European Union actually wants military conflict; such a thing would probably end in a disastrous nuclear holocaust. It seems, however, that we are easily slipping into another cold war, where both sides unconsciously build up strategic military defenses and fighting the occasional proxy war. This was common during the Cold War and is something to look for now; a U.S.-supported Georgian army versus the Russian and Ossetians, for example.

If U.S. politicians insist on mak-

ing Russia our enemy by making unnecessarily aggressive overtures, we're going to find ourselves going up against quite a formidable opponent. The old Soviet Union had a socialist economy with a limited capacity for economic mobilization. Merely convincing the labor force to increase productivity took great effort that resulted in massive prison camps and genocide.

These days, however, Russia is a capitalist giant under the political control of a pseudo-totalitarian, but with an 80% approval rating despite allegations of human rights abuses. Putin's accomplishments, saving of Russian economy and reintroduction of Russia as a world superpower, ensure that simply outspending Russia won't win us a new Cold War.

Even though getting Washington politicians to stop meddling in foreign affairs is akin to a Sisyphian task, we still must seriously consider what we are getting ourselves into. Last time, we slipped into a Cold War without fully understanding what the military costs were. Even though we never had direct confrontation with the USSR, the resulting military conflicts (in Afghanistan, Vietnam, Korea, Cuban missile crises, etc.) could have been avoided. Now, we have a chance to act without getting our military involved and it's a golden opportunity.

It means that we need to stop taking sides in overseas conflicts and performing military actions that outrage a potential enemy. Putting "defensive" technology in Poland doesn't sound like a very defensive move if it escalates tension with Russia. Picking Georgia's side in a civil conflict isn't going to make anybody freer. After all, it was Western powers drawing artificial boundaries which have caused many problems between different ethnic groups living in one nation in the first place. We're not going to solve others' conflicts for them by more meddling.

Now is the time to be wary of war and stay out of foreign affairs. We have enough problems at home to deal with, we don't need to get involved in external conflicts as well. If we really feel the need to "beat" Russia, we can do so in the way we always have -- by being a shining example of economic and civil freedoms to show others what they can also have if only they willingly followed our example.

Obama, You Can Call Me Sweetie

By APRIL WARREN
News Editor

A few months ago on his campaign trail, Barack Obama was asked by reporter Peggy Agar about how he was going to help American autoworkers if elected. His response to the female reporter; "Hold on a second, sweetie."

Obama quickly apologized, calling the reporter and saying, "It's a bad habit of mine. I do it sometimes with all kinds of people." However, buzz of the word 'sexist' still remains even months later; the incident was still mentioned in passing during the Democratic National Convention.

Which leads us to wonder, what do women want?

According to Michelle Obama, women have put 18 million cracks in the notorious glass ceiling. We are teachers, professors, doctors and even presidential candidates.

At the same time, plenty of women use gender to their advantage. Short skirts in workplaces, low cut tops in classrooms, thongs sticking out of low-rise jeans.

In one Stony Brook political science class a female student stated that she wants equal pay for equal work and, in the same breath, she expressed her expectation that a man should pay for her on a date. Several male students in the same class confirmed that his girlfriends rarely paid when they went out.

In the 21st century do we

really expect him to pay for everything? Wouldn't that mean men should be earning higher salaries because they have to pay for us and buy us things?

Women who feel this way give others a bad rap.

So why get offended if someone of the opposite sex refers to you with a term of endearment? It's not like Obama said, "hold on a second, sexy."

Wouldn't you rather a president with a softer, more compassionate side than one who isn't?

In our nation men were breadwinners, protectors and providers for their family long before women had the right to vote. In colonial towns men watched out for women and children. Maybe old habits die hard.

Some women seem to want equality only when it suits them. In certain situations we would rather be the weaker race. You don't see women picketing for the right to be drafted.

Therefore, the "sexist" question is thrown back to the reporter and women across the campus and globe. If she doesn't want to be singled out as a woman than it is her job to assert herself and not let Obama brush her off.

The reporter had a microphone. She could have used it to shout "Mr. Obama, that's not an appropriate response" if she thought he crossed the line.

Guidelines for Opinion Submission



Letters to the editor or op-ed contributions can be submitted by e-mail at comments@sbstatesman.org, on our online submission tool at www.sbstatesman.org, by hand at our office in the Student Union Rm 057, or by mailing it to us at the address in the left column. They must be received at least two days before the next printed issue. The Statesman reserves the right to edit or not print any letter based on appropriateness, length, timeliness, or other reasons at the discretion of the editorial board. Letters should be no longer than 350 words, and opinion pieces should not exceed 550 words. Please include your full name (which we may withhold if you request it), phone number and email address for verification. Phone numbers and e-mail addresses will not be printed. Letters submitted anonymously or under false names will not be considered for publication.



(631) 471-8000/1-800-HOLIDAY

www.stonybrook.hiexpress.com

3131 Nesconset Highway,
Stony Brook, NY 11720



SPORTS FIELD RENTAL AVAILABLE CORPORATE EVENTS/FAMILY REUNIONS

- Softball, Tennis, Basketball, Volleyball
- Enjoy the Picnic Grounds
- Host your Corporate event or Family Reunion
- Putt on our Green

It's all at the Holiday Express Stony Brook!



BECOME THE MOST GIFTED STUDENT ON CAMPUS.

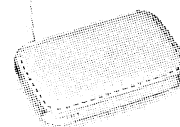
The coolest college gear, great prices and expert advice, that's your neighborhood RadioShack. Come in now and get great deals on all the stuff you need to get your year off to a hot start.



Virgin Mobile ARC

\$49⁹⁹

Totally Unlimited
calling plan—
\$79.99 per month
17-3598



Netgear
Wireless-G Router

\$39⁹⁹

Reg. \$59.99
25-3342



4GB ReadyBoost
USB Flash Drive

\$24⁹⁹

25-275



Plantronics Explorer 220
Bluetooth Headset

\$29⁹⁹

Reg. \$39.99
17-2836

Offers good 7/27-9/30/08. Availability may vary by store. See store for details.

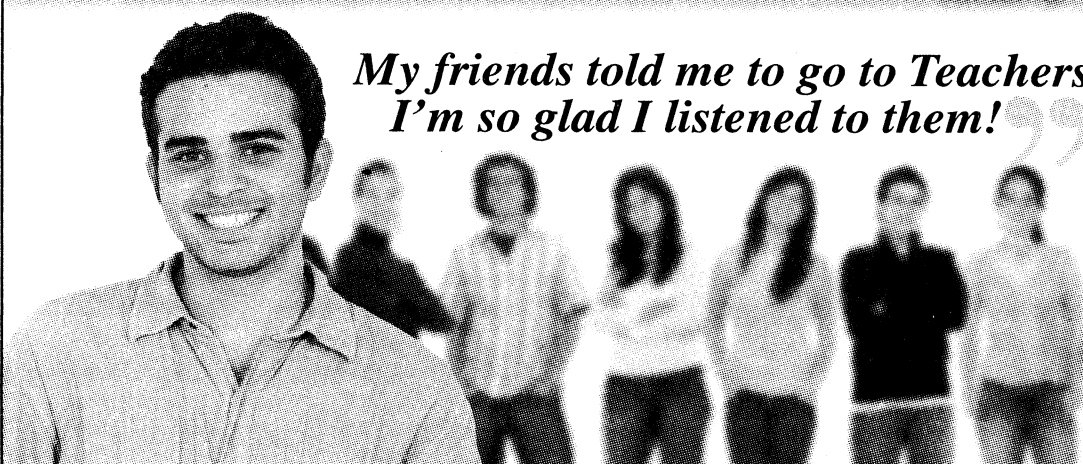
RadioShack.
Do Stuff.[®]
RadioShack.com

VISIT A RADIOSHACK STORE NEAR YOUR CAMPUS.

Ridgeway Plaza Shopping Center
176 Route 25 A
Setauket, NY 11733

*"I needed a free checking account with
free on-campus ATMs and a credit card."*

Live & Learn



*My friends told me to go to Teachers.
I'm so glad I listened to them!*

**Enter for a chance to win \$500
towards your textbooks or a \$20
Visa gift card.**

**Stop by our branches in the Student
Activities Center or Health Sciences
Center to enter today.***

Teachers Federal Credit Union, **Stony Brook's on-campus banking services partner**, offers a complete range of financial services to Stony Brook students, faculty, staff and their families. Join now and become a member of your credit union. And, with an account at TFCU, *your campus card can be your ATM card.*

It's easy for parents to make deposits throughout the year to student accounts via direct deposit or online banking.

Stop by and open your account today!
Call 631-698-7000 or visit www.teachersfcu.org

Convenient Locations Stony Brook University Student Activities Center Health Sciences Center

Visit www.teachersfcu.org for hours

8 Campus ATMs

- Student Activities Center (2)
- Health Sciences Center
- Administration Building
- Long Island Vets Home
- School of Dental Medicine
- Indoor Sports Complex
- Stony Brook Southampton
- Student Center

Easy Access

- FREE Checking + Dividends
- FREE Online Banking/Bill Paying
- FREE Telephone Banking
- FREE Visa[®] Check Card
- Visa[®] Credit Cards - No Annual Fee!

**Nesconset Branch
Coming Soon!**



**Teachers Federal
TFCU
Credit Union**
Since 1952

The Educated Choice



**STONY
BROOK**
STATE UNIVERSITY OF NEW YORK

* Entry form & contest rules available at campus branches.

Amityville | Bay Shore | Central Islip | Commack | Farmingville | Holbrook | North Babylon | Port Jefferson Station | Riverhead | Rocky Point | Selden | Smithtown | South Setauket

Cross Country Runs Past Competition

Stony Brook started off their 2008 season with a bang. The Men's and Women's Cross Country team won both their respective races in dominating fashion in the Stony Brook Invitational last Friday. The women placed seven runners in the top ten of the 4100-meter run, with Seawolves occupying the first six finishes. The men did equally as well, placing nine runners in the top ten, with four runners in the top spots.

Looking for a dominating performance this year to justify the top ranking for the women by the America East Conference, the Seawolves ran with a determination that will soothe the naysayers. The Lady Seawolves were led by Junior Jessica Hampson, from Smithtown, New York, who crossed first in a field consisting of four other universities. Hampson's time of 14:03.42 led the pack, followed closely by the second place finisher, Sophomore Holly Van Dalen, of Wanganui, New Zealand, who finished fourteen seconds later with a time of 14:17.81.

Stony Brook's domination did not stop there as four more Seawolves would inhabit the next four spots: Sophomore Lucy Van Dalen (14:47.62) from Wanganui, New Zealand, Junior Laura Huet (15:07.16) from Carrickmines, Ireland, Sophomore Caroline Cortes (15:31.71) of Woodmere, New York, and Freshman Kristal Conklin (16:13.46) of Middletown, New York. Sophomore Leanne Skrabacz rounded out the top ten with an eighth place finish with a time of 16:54.49. From the first finish by Hampson, the next place occupied that was not

a Seawolf was from Long Island University, who finished a full two minutes after Hampson.

The men were placed second in the preseason poll by the America East Conference and after the powerful performance by the men's team, the Seawolves look to prove that a second seed is no fluke.

The men placed an astounding nine runners in the top ten in last week's Invitational. Sophomore Tim Hodge, of Tawa, New Zealand, placed first for the Seawolves with a time of 19:33.60, followed closely by his teammate, Daire Birmingham, a junior from Portmarnock, Ireland (19:35.42). Hodge and Birmingham were followed by Junior Alex Felce (Stroud, England) with a time of 19:53.42, good enough for third and junior Iain Whitfield, from Stroud, England, who crossed fourth at 20:23.14. The last five spots in the top ten were full of Seawolves as well as freshmen David Frankel and Daniel Sierra, Sophomore Alex Varone, Junior Kurt Wende, and Freshman Gerard Harley finished in the fifth through tenth places, respectively.

Coach Andy Ronan was particularly pleased with both his teams' performances, knowing how important a strong opening is for a successful season. Next up for the Seawolves is the Fordham Invitational, where they will travel to the Van Cortlandt Park, in New York this Saturday at 10:00 AM.

Soccer Set to Battle #2 UCONN

Bethlehem, Pa. After a relatively quiet first half that saw each keeper only make one save a piece, Lehigh bombarded Ditrich in the second half with eight shots on goal, the seventh of which eluded him for the only goal of the game.

After falling behind in the 90th minute the Seawolves mounted one more offensive attempt, but a header by Mladen Ramic was turned away by Lehigh keeper Jonathan Nydell to

preserve the shutout. Ditrich had to make another save on Steven Avena after that, but Stony Brook was unable to get anything past Nydell and fell by a score of 1-0.

The Seawolves travel to Storrs, Ct. on Wednesday night to battle the #2 ranked Huskies. They then open up the home schedule on Sunday, September 7 against Long Island University.

Oh Joba!

BY BRIAN MORGAN
Senior Writer

According to ESPN, Brian Cashman has already decided that Joba Chamberlain will start next season in the bullpen. If this announcement was made before Joba pitched a game as a starting pitcher, I would've agreed 100%. The combo of Chamberlain and Mariano Rivera was unstoppable and if the Yankees had a lead after the seventh inning, victory was inevitable. However after seeing him pitch in his 12 starts, it's obvious that he is most useful as a starting pitcher. Before he started, their starting pitching was less than stellar, even with a healthy Wang. Chamberlain gave the Yankees a true ace, something that hasn't been seen since Clemens' first stint with the Yankees.

Of course I would like to see Chamberlain in pinstripes for 15 years, and Cashman is probably afraid having the next Mark Prior or Kerry Wood on his hands, however Dusty Baker is not the manager of the Yankees. Baker is notorious for killing the arms of young pitchers and there is no way Chamberlain or any of the young pitchers of the Yankees staff will be over-used like Wood or Prior was. For those who are unaware of the debacles that occurred in 1998 and 2003, Wood, at the ripe age of 20, pitched 166 2/3 innings, while Prior pitched 211 1/3

innings at 22. Chamberlain pitched 112 1/3 innings at 21 (minor league stats included), and he'll ultimately finish with approximately 100 this year, at 22.

According to CBS Sports, Joba's shoulder injury, which sidelined him for nearly a month, is common in pitchers who change roles in a short period of time. If you take a look at Joba's game log, he pitched 2 1/3 innings on June 3rd, 4 1/3 innings on June 8th, and 6 innings on June 13th. Although his pitch count determined the amount of innings he pitched, if you estimate that an inning takes 20-25 minutes, he went from pitching over less than a span of an hour to two hours within 10 days. If Joba does repeat the process he went through this year, he is more prone to injury, and the Yankees will be worse for it.

The only silver lining I can see from Cashman announcing that Chamberlain will be in the bullpen is they will be more likely to sign or trading for a big free agent in the offseason. CC Sabathia's inning count over the last couple of years scare me, but he is an ace nonetheless, and the Yankees can't go into the playoffs with the same pitchers as 2007. They need a Josh Beckett-type pitcher to start game 1, and in my opinion they have it in Joba after his performance on July 25th. However if he's in the bullpen, CC Sabathia would be a great option.

More Football Photos

Photos by Alex Berkman/ SB Statesman



DB Chris Richards talks after coming up with two interceptions.

Wolfie urges on the crowd.



FALL 2008 HOURS

Monday–Friday

9:00 AM–10:00 PM

Located on the 2nd Floor of the Stony Brook Union

Brought to you by the Faculty Student Association

www.campusdining.org

Women's Soccer off to Tough Start

By MATT EHRESMAN
Staff Writer

The Stony Brook women's soccer team began its season with high expectations. Although they've proceeded to lose two out of their first three games, they are still confident in where they believe their season is headed.

On August 22nd, the Seawolves lost 1-0 C.W. Post. In the loss, junior goalkeeper Marisa Viola made seven saves. Unable to overcome an early first half goal, the Seawolves scrambled for an attempt at the tying goal, outshooting the Blackbirds 13-7 in the second half. Assistant Coach Steve Welham expressed disappointment with the loss.

"Sure, the LIU game was a little disappointing since we felt we completely dominated the second half and limited their scoring opportunities," Welham said.

On August 28th, the Seawolves then traveled to New Rochelle, New York, where they faced Iona. Stony Brook picked up its first win of the season, defeating Iona 1-0. Viola picked up her 17th career shutout, moving her to second all-time on the program's list. In the twenty third minute, senior Trine Allenberg picked up the only goal of the afternoon off a pass from freshman Colleen McKenna.

"Our team responded well against Iona and received a positive result," Welham said about the game. "The score line could have easily been 3-0 us."

To close out the month of August, the Seawolves continued on to the second game of a three game road trip to Providence, Rhode Island, where they were defeated 2-0.

The Seawolves gave up an early goal, as

Tara Ricciardi of Providence scored just ten minutes into the game. Stony Brook had opportunities late in the game to tie it, but Providence goalkeeper Jill Schott denied Kate Collins from inside the penalty marker. Also, freshman Dominique Adamo had a chance to tie it for the Seawolves, but her shot from inside the eighteen yard box was deflected away by a Providence defender.

In the 76th minute, Ricciardi would ice it for Providence, scoring her second goal on a penalty kick.

Although the team would have liked to have gotten off to a better start, Welham is pleased with where they are as a team right now. Despite being a very young team, the Seawolves look forward to the challenges that lay in front of them.

"Right now we are a young team that is growing," Welham said. "We can have anywhere between six and eight freshmen and sophomores playing at one time, so we know that there needs to be time for a learning curve to take place. As a coaching staff we feel that this year's freshmen class has brought us depth and stability not only for right now but moving forward in the future."

"We definitely have a young team at the moment. Our seniors (Brooke Barbuto and Allenberg) are doing a good job helping to lead us as well."

With a tough America East schedule ahead, Welham said that Stony Brook embraces matches with high level non-conference opponents, such as Boston College and Hofstra.

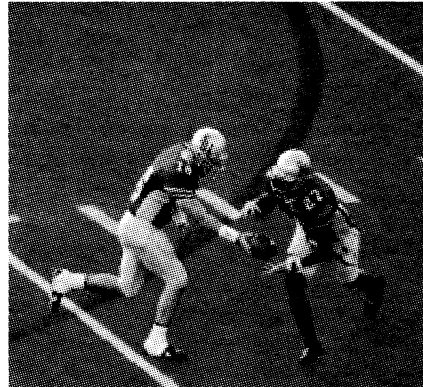
"Every game is a chance to learn and find out a little more about ourselves and what we can do, everything leading up to conference play," he said. "We are looking to take one game at a time."

Football Photos

Photos by Alex Berkman/ SB Statesman



Running back Edwin Gowins discusses his first game in a Seawolves uniform



QB Dwayne Hoffman hands the ball off to Brandon Mason

VOLLEYBALL WINS TWO OF THREE MATCHES

By JESSICA MCCLINTOCK
Senior Writer

The Stony Brook volleyball team lost three close sets during its season opener to Iona College at the CCSU Blue Devil Invitational in New Britain, Connecticut on Friday August 29. The Seawolves were helped largely in part by senior Gulce Nazli Dikecligil all the way from Istanbul, Turkey. She accounted for a double-double by means of 13 kills and 13 digs. Stony Brook was left after this game 0-1 thus far for the season.

The team bounced back quickly the following day and won both of its matches Saturday night August 30, beating Bucknell in straight game sets, 3-0. The dominating scores were 25-18, 25-19, and 25-22. In the second match, they displayed nothing less than the first

one with more stand out performances. The Seawolves won against Central Connecticut State University, 3-1, with scores of 39-37, 25-19, 23-25, and 25-22. Dikecligil and Jessica Graham from Eastport, New York were together named to the all-tournament team for that game. Stony Brook is all set to move on with their season at 2-1 overall.

Dikecligil and freshman setter Kelsey Sullivan from Hamilton, Virginia were named the America East Volleyball Player of the Week and Setter of the Week correspondingly. This is according to a release from the conference office on Tuesday afternoon.

The girls hit the road as Stony Brook continues their 2008 season on Thursday September 4 with a game in Kingston, Rhode Island against the University of Rhode Island set to start at 7:00 PM

Men's Soccer Starts Slowly

By GENE MORRIS
Sports Editor

Men's soccer opened its 2008 schedule with a pair of road games against two tough opponents. The Seawolves salvaged a tie with a big comeback in the first game against rival Hofstra University and lost a heart breaker to Lehigh University on a goal in the 90th minute.

The team traveled to Hofstra on August 29 to open the 2008 campaign in front of a record setting crowd of 1,062 at Hofstra Soccer Stadium. The game was scoreless through the first half, with Stony Brook senior goaltender Dawid Ditrich making three saves. His counterpart James Winters made one save in the half.

Early in the second half Hofstra was able to get on the board first. Demont Mitchell's diving header from eight yards out gave the Pride the 1-0 lead. Just over 12 minutes later Steven Ehrichs headed a ball past Ditrich to give the Pride a

seemingly comfortable 2-0 lead.

But the Seawolves did not give in, and answered back with a goal of their own less than nine minutes later. Freshman Tom Butler scored his first career goal on a shot from 15 yards out into the upper right corner of the net. Diego Acero was credited with the assist on the goal that got Stony Brook back into the game.

In the 88th minute, sophomore Mladen Ramic of Serbia was able to head in a ball past Winters to tie the game for the Seawolves. Petar Rakovic got the assist with his long free kick.

The game remained tied into overtime, when Tom Butler nearly won the game in the 98th minute but was turned away by Winters. Neither team registered another shot on goal and the Seawolves were able to come out of hostile territory with a well earned tie.

On August 31 the Seawolves took on a tough Lehigh team in

Continued on pg. 15

CLASSIFIEDS

FOR RENT

STUDIO APT starting \$600 and **1 B/R** apt starting \$950. In the heart of Port Jefferson Village. Utilities included / cable. Parking and bus stop across the street. By appointment only. 631-473-2579.

LARGE STUDIO APARTMENT IN NESCONSET. New carpet & fresh paint. Private entrance. Cable & utilities included. No pets. 1 month security. \$950. 516-779-5193 or email franka28@excite.com

TRAVEL

SPRING BREAK 2009. Sell Trips, Earn Cash and Go Free. Call for Group Discounts. Best Prices Guaranteed! Best Parties! Jamaica, Cancun, Acapulco, Bahamas, S. Padre, Florida. Information/Reservations 1-800-648-4849 or www.ststravel.com

HELP WANTED

DOMINOS PIZZA DELIVERY DRIVERS AND INSIDE HELP WANTED. Flexible hours, great pay, need your own car for delivery. 631.751-0330

HIGH END BUSY CAR WASH only 2 miles away from SBU seeks Sales/Service advisors to meet, greet and advise customers of services available. Good hourly pay + commission, flexible hours available. Call 631-928-4383 for more information.

SERVICES

THE CARPET SPECIALIST. Installations, repairs, & restretches. Free estimates. Over 30 years experience. No job too small. 631.567.1426

KAPLAN COUNSELING CENTER, LCSW-R Specializing in: addictions, anxiety, depression, panic and phobia disorders, pre-marital. Also DWI Evaluations, DMV approved. **FREE CONSULTATIONS, COMPLETELY CONFIDENTIAL.** 631.842.0841.

FAX SERVICE. \$.50 PER PAGE (including cover sheet). Call 632.6479 or come to Room 057 in Student Union.

You're pregnant?

You're frightened?

Please let us help. Life can be a wonderful choice.

Alternatives to Abortion.

***Free** pregnancy testing, information, counseling, and assistance.*

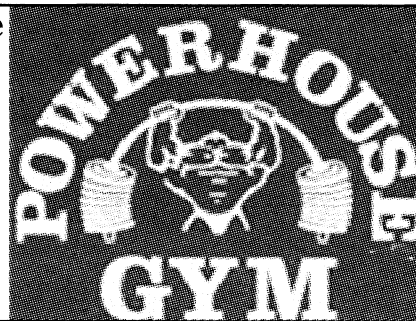
Call 243-2373 or 1-800-550-4900

No Enrollment Fee

(with Student ID.)

(Based on 12 or 24 Month Membership)

OPEN 24 HOURS



631-689-8989

140 Belle Meade Rd
Setauket

Less than 5 Minutes from campus

COLOR COPIES only 25¢ea.

XEROX COPIES

COLOR POSTERS

BLUEPRINT COPIES

SCANNING

LAMINATING

631-451-0111

Fax 631.451.0774

Email: largeposters@aol.com

1315 Middle Country Rd.

Centereach

(1/4 mile East of Nicolls Rd)
next to Cold Stone Creamery & REMAX in the Badoluto's Market Plaza

while you wait

copy & print
C E N T E R



Interested in the news? Enjoy
writing or taking photos?

Then what are you waiting for?

Go online and sign up.

www.sbstatesman.org

www.sbstatesman.org

or JOIN US in the Student Union
Rm 057

STATESMAN Sports

Stony Brook Brushes Away Colgate

By GENE MORRIS
Sports Editor

On a night when the Seawolves ran wild over Colgate's porous run defense, two new additions and a familiar face led the offensive charge.

Freshman running back Edwin Gowins ran for 149 yards and two touchdowns in his Stony Brook debut, while junior Conte Cuttino also hit the century mark with 107 yards and a scored on 14 carries. Senior Brandon Mason also had a touchdown to

Stony Brook	42	go along with
Colgate	26	22 yards.
9/6 vs. Elon	3PM	"It's a nice
		1-2-3 punch,"

Gowins said. "We have three good backs."

Red shirt freshman quarterback Dwayne Hoffman did enough to manage the offense, going 8-16 for 174 yards with a touchdown and an interception. Although the Seawolves first drive ended with the interception, Hoffman persevered.

Stony Brook's final scoring drive exemplified the kind of explosive offensive weapons the Seawolves have on their roster this year. Hoffman and junior wide receiver Donald Lee hooked up on a 49 yard pass down the middle of the field, which ended with Lee fully extending and diving to make the spectacular grab. On the next play Gowins covered the remainder of the field scoring his second touchdown from 20 yards out.

The defense, which played well in the first half also made some timely plays after halftime. "We made some big stops in the third and fourth quarter," Head Coach Chuck Priore said after the game.

The biggest was midway through the fourth quarter. Colgate had crept back within 16 points, and was about to cross over midfield and into Stony Brook terri-

tory. But quarterback Greg Sullivan was sacked by red shirt freshman Ryan Haber for a twelve yard loss. On the next play Sullivan was picked off by Chris Richards, who also had an interception in the first quarter.

"I got beat a couple times deep," Richards said. "But coach always talks about staying disciplined." Richards also finished with four tackles to go along with his two interceptions.

Not everything was positive on this night for the Seawolves. Several players were taken off the field with injuries, and when asked after the game Priore said, "We're probably dealing with a couple of season ending injuries."

Hindering the Colgate offense was the absence of star running back Jordan Scott, who was a Sporting News preseason FCS All-America team member. Freshman Jordan McCord shouldered the load for the Raiders, and ran for 90 yards on 21 carries.

"Regardless of who's on the field, it's all about the team who executes," Coach Priore said. "We got the job done, but we have room for improvement."

Box Score

Passing

Name	Cmp-Att	Yards	TD
Hoffman	8-16	174	1
Team Total	8-17	174	1

Rushing

Name	Carries	Yards	TD
Gowins	12	149	2
Cuttino	14	107	1
Team Total	38	291	5

Receiving

Name	No	Yards	TD
Suggs	3	70	1
Lee	2	61	0
Porter	2	30	0
Team Total	8	174	1



Running back Conte Cuttino on his way to 107 yards rushing.

Alex Berkman/ SB Statesman



Senior Brandon Mason punches in a one yard touchdown run.

Alex Berkman/ SB Statesman



The Enthusiastic crowd cheers on the Seawolves

Alex Berkman/ SB Statesman

Statesman Game Ball



Edwin Gowins RB- The freshman, who graduated from Bellport in 2007, and spent a year at Bridgton Academy, rushed for 149 yards on 12 carries and added 2 scores in his first collegiate game.

Parking Assistance For Commuters



Parking at Stony Brook University can be a hassle. If you're a commuter who drives, parking at the University is about as painful as a slap to a tender, sunburned back.

With the influx of more students -- and what seems to be more commuters -- parking has become even more of a nightmare. And if you're a latecomer, you will most likely be forced to pay in one of the metered lots. As if that wasn't enough, parking is confusing enough all on its own. What this means is that you'll either have to come earlier each day or put away money for parking. The latter, I'm sure, no one likes doing.

But as limited and inconvenient as parking is, here are some tips in attempting to tame the SBU parking beast.

Free All-Day Parking

North P Lot
South P Lot
Gym Road Lot
LIRR Parking Lot

What To Always Have

- Patience -- To park at Stony Brook, this virtue is a must.
- \$7.50 on hand in case you can't find any free parking. (And make sure it's change.)

Keep In Mind

- Most parking on weekends is free on campus. The stadium premium and faculty lots are free, as well as the Administration Garage. Metered lots are also free on weekends. (Still check the signs in case changes are made.)

Stay Positive

- Parking may be a pain, but until you find another way, it's a necessary evil. If you can't find free parking, well, you can't get everything for free.

North P Lot



North P is narrow and small, but don't count on parking here if you come later than 9:30 a.m. This lot fills up much quicker than you'd think, given that it's quite a walk from the Academic Mall. Come early, or if you're feeling lucky, whiz through and see.

Gym Road Parking Lot



This lot fills up the fastest of all the commuter parking lots. Come early and maybe you'll get a spot. Circle a few times if you're determined, but if you're not a patient person, don't bother waiting eagerly for a student parked there to come waltzing along because you'll be waiting for a while.

South P Lot



This is the lot to go to if you want a little more certainty. Albeit, you'll have to take the bus -- unless you enjoy 30-minute (or more) walks to the academic mall. Still, the bus service is relatively reliable and if you don't mind parking in the middle of nowhere in case of anything, this is the place.

LEGEND

- Faculty/Staff Permits
- Commuter Student Permits
- Resident Zone 1 Permits
- Resident Zone 2 Permits
- Resident Zone 3 Permits
- Resident Zone 4 Permits
- Resident Zone 5 Permits
- Resident Zone 6 Permits
- Premium Parking Lots
- Paid Meter Lots
- Paid Parking Garages
- Paid Faculty/Staff Parking
- 24 Hour Parking

Map courtesy Stony Brook University
STONY BROOK
STATE UNIVERSITY OF NEW YORK

Photos by The Statesman, taken between 3 and 4 p.m. on Sept. 3, 2008. Information in guide and map were up-to-date at the time of publication.

Parking DONT's

- Do not park in a resident lot, ever. Resident lots are now, for residents only -- all day, every day. Unless the \$60 you'll have to dispense for a parking ticket is chump change to you, don't even risk it.
- Do not park without paying for the right time (or forgetting about the meter.) That stunt will cost you \$30 if you're caught -- and the
- Don't take your metered parking receipt with you. Leave it on your dashboard, just in case. The time spent appealing a parking ticket is time you won't get back.
- Don't come late. If you want to get parking in coveted spots, you have to work for it -- even if you have to get up a little bit earlier.

Police Department isn't fooling around.

Best Place To Park

- The North P and Gym Road lots are the closest to the center of the campus, but if you're going to even attempt to park there, come early. And by early we mean 8:30 a.m. the latest. These spots go much quicker than you think and barely open up until the day is almost done. Don't forget the railroad parking across from the Gym Road lot.