

**Accomplishments**  
**March 2005 – March 2006**



# Collections

18,000 books = 1,800 linear feet = 6 football fields





# Collections

32,000 current newspapers,  
serials and periodical  
issues, stacked up  
= 1,300 feet tall





# Collections

- 📄 4100 print government documents
- 📄 2500 microform gov't documents
- 📖 5000 gift books
- 📖 15,000 Japanese books
- 📖 1200 books about Haiti
- 📄 Papers of the late Julius Levine, faculty member and double bassist
- 🎥 Videos of important campus events such as the President's and Provost's lecture series





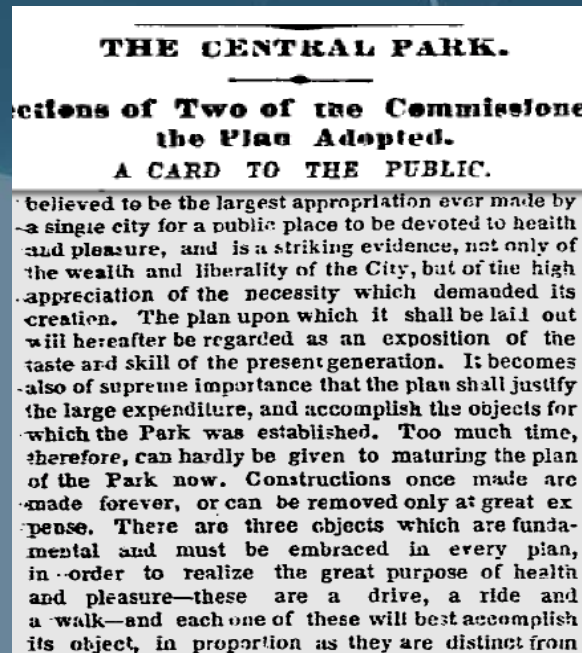
# Collections

Online access to...



All ACS journal publications back to the mid-19th century

The New York Times from  
1851-present





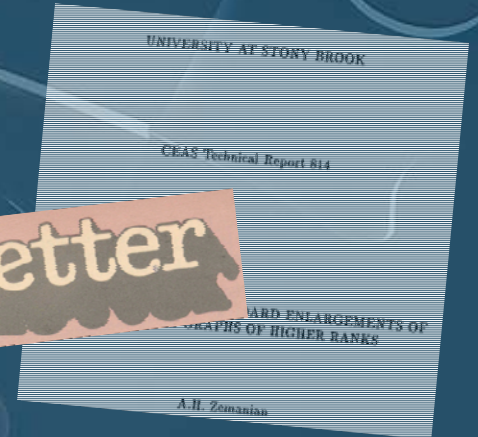
# Collections

- ❖ Digitized CEAS tech reports, the SCAN Newsletter and SCAN International Edition, the Statesman



[DSpace at SUNY >](#)  
[Stony Brook University](#)  
[Campus Newspapers](#)

The Stony Brook



- ❖ Scanned 50 historical US Coastal Survey maps; most important ones with georeferencing
- ❖ Digitized videos of programs hosted by the library
- ❖ Used hybrid reformatting to produce digital and backup analog copies of concert tapes



# Collections

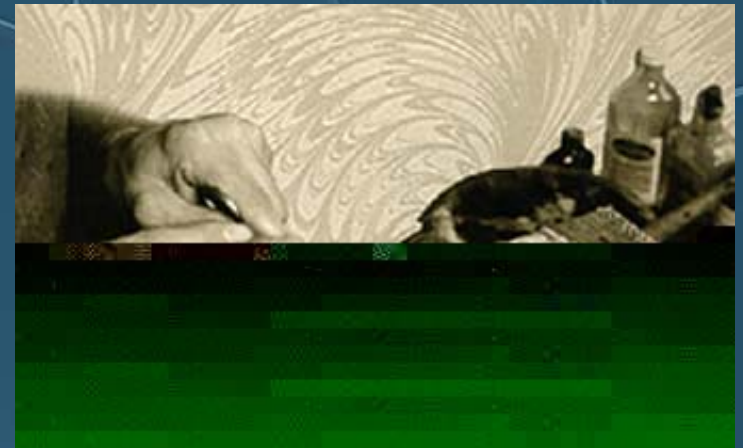
Repaired over 8000 items in-house

Rebound 800 items commercially

Received 2 preservation grants

\$130,000 NYS Preservation grant

\$20,000 NYS Comprehensive Research Libraries  
Coordinated Grants Program



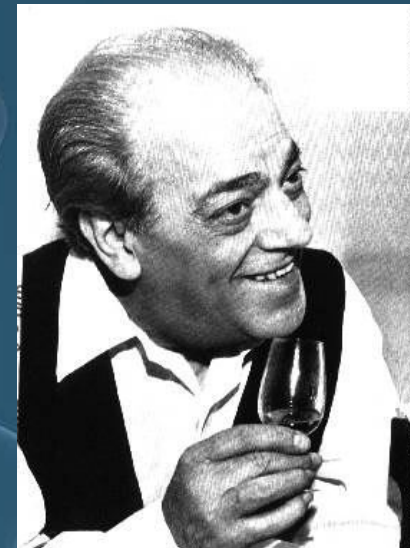


# Collections

Found by John Andrus



Oversized film transparencies for a manuscript of Villa-Lobos' ballet "Emperor Jones"







# Collection Credits

**Acquisitions**  
**Cataloging**  
**Chemistry Library**  
**Digital Team**  
**Science & Engineering Library**  
**Gifts**  
**Government Documents**  
**Music Library**  
**Preservation**  
**Selection**  
**Serials**  
**Special Collections**



# Access

## Aleph additions:

- ⌘ 25,000 titles
- ⌘ 19,000 authority records
- ⌘ MARC records for a Hebrew and Yiddish collection
- ⌘ MARC records for 628 SUNY Press books
- ⌘ 6000 e-Journal records from Serials Solutions
- ⌘ Software to interface with the SUNY Union Catalog





# Access



Over 1,100 music-related materials were cataloged

Implemented CJK module

Basic Search   Advanced Search   Results List   Previous Searches   STARS   Co

**Basic Search of Full Catalog** [Go to Journal](#)  
Journal or Newspaper Titles in W

**Find:**  
Title  
Author (last name)  
Subject  
Call Number  
ISBN  
ISSN  
Gov't Doc Number  
Title - Chinese

**Begins With:**  
鲁迅

SEARCH

Examples: **old man and the sea**  
(omit initial articles "a", "an", "the")  
**シルクロードと正倉院**



# Access

Improved access from databases to fulltext e-journals  
by implementing



Designed and implemented New Books List:





# Access Credits

**Acquisitions**

**Cataloging**

**Digital Resources**

**DoIT**

**Music Library**

**OPAC Team**

**Serials**



# Information Delivery and Services

## Interlibrary Loan:

12,000 items borrowed

12,000 items lent

460 items lent or borrowed each week





# Information Delivery and Services

Circulation:

184,000 Loans  
67,000 Renewals  
184,000 Returns



1 item is borrowed or returned every 45 seconds



# Information Delivery and Services

AV course reserves average per semester

75 classes

400 videos

3,700 reserve item checkouts

Electronic reserves

Implemented in Spring 2005

55 course requests in Spring 2005

84 course requests in Spring 2006





# Information Delivery and Services



13,000 music tracks were accessed via iTunes

400,000 e-journal accesses

1,000,000 hits on the Homepage



# Information Delivery and Services

- <a href="http://stonybrook.edu">http://stonybrook.edu</a>	610902
- <a href="http://sunysb.edu">http://sunysb.edu</a>	509470
- <a href="http://sunysb.edu/~library/index.html">http://sunysb.edu/~library/index.html</a>	186670
- <a href="http://sunysb.edu/~library/eresources/finder.html">http://sunysb.edu/~library/eresources/finder.html</a>	44838
- <a href="http://www.grad.sunysb.edu">http://www.grad.sunysb.edu</a>	25681
- <a href="http://sunysb.edu/library/index.html">http://sunysb.edu/library/index.html</a>	23500
- <a href="http://commcgi.cc.stonybrook.edu/cgi-bin/webevent/webevent.cgi?cmd=openenc...">http://commcgi.cc.stonybrook.edu/cgi-bin/webevent/webevent.cgi?cmd=openenc...</a>	16978
- <a href="http://naples.cc.sunysb.edu/doiit.nsf/pages/campuswww">http://naples.cc.sunysb.edu/doiit.nsf/pages/campuswww</a>	14295
- <a href="http://stonybrook.edu/library/">http://stonybrook.edu/library/</a>	12025
- <a href="http://sunysb.edu/library/eresources/finder.html">http://sunysb.edu/library/eresources/finder.html</a>	9059
- <a href="http://sunysb.edu/library/services/circulation/borrowing.html">http://sunysb.edu/library/services/circulation/borrowing.html</a>	7468
- <a href="http://usb.edu">http://usb.edu</a>	7373
- <a href="http://stonybrook.edu/spd/">http://stonybrook.edu/spd/</a>	5131
- <a href="http://sunysb.edu/~library/about/hours/index.html">http://sunysb.edu/~library/about/hours/index.html</a>	5022
- <a href="http://stonybrook.edu/registrar/">http://stonybrook.edu/registrar/</a>	4576
- <a href="http://sunysb.edu/library/">http://sunysb.edu/library/</a>	4556
- <a href="http://naples.cc.stonybrook.edu/Admin/commencement.nsf/">http://naples.cc.stonybrook.edu/Admin/commencement.nsf/</a>	4073
- <a href="http://www.grad.sunysb.edu/academics/bulletin/degreeprograms.shtml">http://www.grad.sunysb.edu/academics/bulletin/degreeprograms.shtml</a>	3839
- <a href="http://stonybrook.edu/sb/wang/index.shtml">http://stonybrook.edu/sb/wang/index.shtml</a>	3657
- <a href="http://stonybrook.edu/facilities/tps/parkingservices/permits.shtml">http://stonybrook.edu/facilities/tps/parkingservices/permits.shtml</a>	3595
- Others	360417

May 2006 snapshot of hits on library web pages from non-SBU sites

The library homepage and the e-resources pages 3<sup>rd</sup> and 4<sup>th</sup> on this list

Library pages account for half of 16 most popular SBU pages in May



# Information Delivery and Services

## E-Reference

Extended chat hours to all-day

Evening and weekend chat hours

Questions increased from 9 to 20 per month

50 e-Mail questions per month

## Questions from 2005-2006

38,500+ informational questions

12,500+ reference questions

New Reference point at Main Circ desk



# Information Delivery and Services

33% gate count increase in CRR (2004-2006)



Post-midnight hours in CRR



# Information Delivery and Services



6000 patrons involved in Instruction

Partnered with College of Business to integrate mandatory library research into curriculum

Collaborated with Journalism to team-teach library research modules



# Information Delivery and Services

Partnered with Academic Advising's Transfer Student Program to provide tours to all transfer students

New workshops on EndNote, SciFinder Scholar, Xtreme Google, and Avoiding Plagiarism

National recognition for our research tutorial

SBU Library Research Guide

6 citing sources

1 choosing a topic

2 identifying sources

3 using STARS

4 finding articles

5 using the web

find  
research  
evaluate  
explore

March Site-of-the-Month  
2005  
PRIMO  
ALA ACRL IS

[SITE MAP](#) | [TECH SPECS](#)  
Resources for Librarians and Educators, C

Original SBU Library Research Guide material © 2004 by the Stony Brook University Libraries. This tutorial incorporates material from Searchpath, a tutorial developed by the Western Michigan University Library, © 2001-2002, from InSite, a tutorial developed by ILLIIT, © 2003, and from TILT, a tutorial developed by the Digital



# Information Delivery and Services Credits

**Circulation**

**Digital Resources**

**ILL**

**Instruction**

**Music**

**Evening & Weekend Team**

**Reference**



# Personnel



Hired 4 librarians: Susan Lieberthal, Karen Kostner, William Glenn, and Aimée deChambeau

Hired 2 CSEA employees: Jeanne Quagliata and Beverly Lobb

Hired 2 Instructional Support employees: Blair Martin and Kristen Reynolds







# Personnel

First Place Student Employee of the Year Award --  
Sharif Nayem, Computer Science Library



University Libraries Distinguished Student Employee Award  
established -- Claudia Toloza, Circulation Accounts,  
first recipient



Thomas Jefferson Award --  
Andrew Xu (Director's Office)  
Gregory Scott Smith (Circulation Services)



# Personnel

Social events -- Lighthouses Program, Holiday Party and . . .

Aleph 17



Autumn Harvest



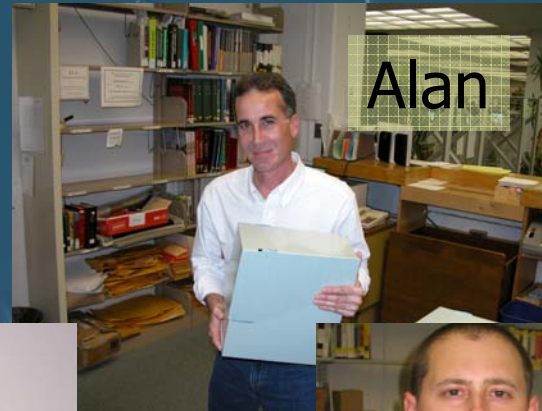
Student employee  
appreciation party



# Personnel



Clara



Alan



Blair



Trina



Peter



Ned

Evening Supervisors provided professional presence in evening and weekend hours



# Personnel



President's Award  
for  
Excellence in Librarianship  
awarded to  
**Kristen Nyitray**



# Personnel



President's Award  
for  
Excellence in Classified Service  
awarded to  
**Josephine Castronuovo**



# Personnel Credits

**Evening & Weekend Team**  
**Library Scholarship Team**  
**Personnel**  
**Social Events Team**



# Physical Infrastructure

Moved 14,000 volumes to storage

Moved patents to create room for monographs in NRR

Replaced TV monitors and chairs in AV viewing rooms

Reorganized the journal, recreational reading, and newspaper areas of CRR



# Physical Infrastructure

Installed two display cases  
outside Special Collections and one inside

Renovated Circulation Desk/Photocopy area

Usage doubled for group study rooms







# Technological Infrastructure

Aleph 17 upgrade



First campus in SUNY and 9th in the US



# Technological Infrastructure

Implemented Ebsco online checker

SUNYConnect DSpace

Illiad and Ariel upgrades

Installed latest version of OCLC Connexion

Installed iTunes server and network





# Technological Infrastructure

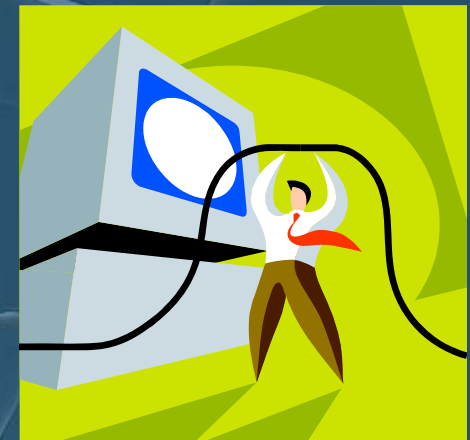
Placed staff PCs on sunysb.edu directory

Library share space

23 new staff computers and 5 recycled ones

120 computers upgraded

800 Client Services help requests - 1/2 completed in same day



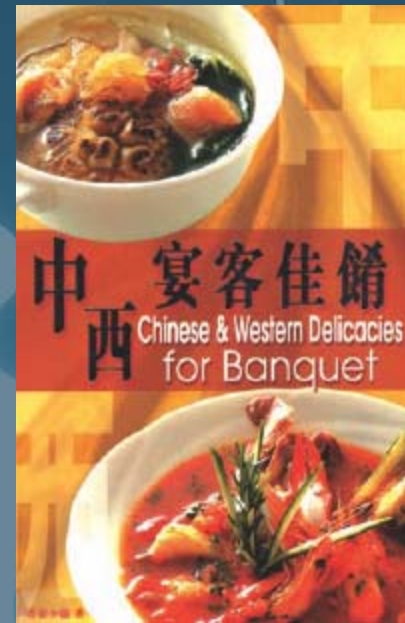


# Fundraising

Four endowments worth \$400,000

Dr. Margot Ammann established \$150,000 unrestricted gift

\$15,000 was added to  
Chinese Cookbook Endowment





# Fundraising

\$5000 grant by the Alumni Association to digitize the Statesman

Special Collections started its own endowment fund

Fund for digitization of the SCAN Newsletter

Applied for \$1.4 million NEH grant



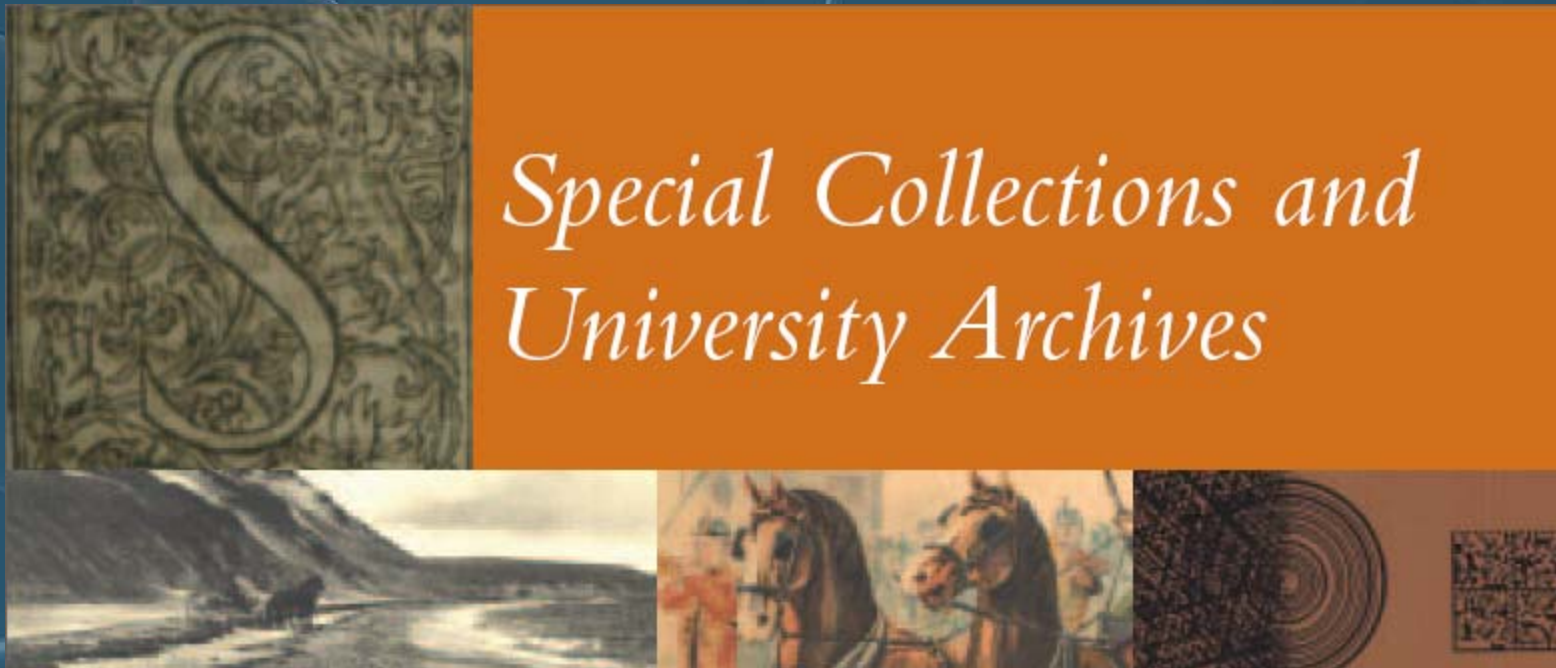
# Infrastructure Credits

**Advancement  
Building Manager  
Cataloging  
Circulation  
Client Support  
Digital Team  
DoIT  
Interlibrary Loan  
Music  
Preservation  
Public Services  
Reference  
Science & Engineering Library  
Serials  
Special Collections**



# Publicity and Outreach

Special Collections brochure





# Publicity and Outreach

Hosted traveling exhibitions



Items from Special Collections in exhibitions at Long Island Museum of American Art, History, and Carriages; Cold Spring Harbor Whaling Museum; and University Art Gallery.





# Publicity and Outreach

Special Collections sponsored  
13 programs and lectures

Press releases and announcements  
pertaining to Special Collections in 200 media,  
including New York Times, ABC News, and CNN





# Publicity and Outreach

Postcard announcements and posters to promote New York Times Historical Edition

Represented library at student orientation

Updated information in Graduate Bulletin and Graduate Orientation Booklet

Created blogs to disseminate library news and events

Find out what's happening at the library: spend a few moments on

[The Screen Porch](http://melvillelibrary.blogspot.com/). <http://melvillelibrary.blogspot.com/>



# Publicity and Outreach Credits

**Publications and Publicity Team**  
**Special Collections**  
**Library Instruction**



# Summary

Collections

Access

Information Delivery and Services

Personnel

Infrastructure

Publicity and Outreach





# Summary

- Many accomplishments
- Interconnected
- Successes depend on external players
- Incorporating digital technologies into services
- Information technologies continue to offer opportunities and challenges
- Need to chart our future



# Production Crew

- Dana Antonucci-Durgan
- Nathan Baum
- Aimee deChambeau
- Mary Ficuciello
- Chris Filstrup
- Keith Krejci
- Lynn Toscano
- Maryanne Vigneaux