



Maryanne Vigneaux/Lib
10/20/2006 12:46 PM

To Maryanne Vigneaux/Lib@SUNYSB
cc
bcc F.Jason Torre/Lib
Subject Library Bulletin, October 20, 2006, Number 1563

INVITATION TO BABY SHOWER:

These details were just given . If you are attending rsvp right away ! I was informed that Serials/Acquisitions/Cataloging and Public Services are collecting for a group gifts or gift cards . If you'd like to be part of either of these library gifts see Liz /Linda or Hanne by Monday noon . Otherwise, plan to "do your own thing." This is a first baby , so surely she can use clothing or baby books.

Helen (Hung) Xue's Baby Shower

When: Tuesday, October 24th, 2006

Where: Melville Library Building -- Javits Room # E2340

Time: 2:00pm -4:00pm

Details: We will be serving refreshments, cakes and dessert items

P.S. Her due date is November 22nd, 2006

*R.S.V.P. by Friday, October 20th, 2006 (noon) 2-6242 or e-mail me
SHHHH ... PLEASE NOTE... - This is a surprise!!!*

STONY BROOK SOUTHAMPTON: (submitted by Chris)

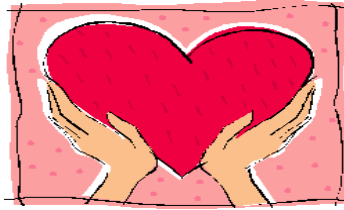
The library situation at Southampton is as follows until further notice.

SBU now owns the Southampton campus. This includes the library building. However, LIU continues to own the print collection in the library and plans to move it to other sites before the beginning of AY07-08. During this AY, the print collection at Southampton will be managed by LIU's online catalog. LIU staff will keep the library open M-Th 10am-6pm and Fri 10am-4pm. The library is open to SBU students who may use the building and the collections in-house. SBU students may also request guest borrowing privileges from Bill Roberson, the LIU librarian in charge. SBU students may access SBU's electronic resources in the Southampton SINC site. SBU students must come to the main campus to borrow materials and to pick up ILL materials: for now, there is no delivery of print materials to Southampton. We offer on-line reference service for the Southampton campus:

<http://www.stonybrook.edu/library/services/reference/ask.html>

WANTED - INTEROFFICE ENVELOPES:

It would be much appreciated if you could recycle any LARGE interoffice envelopes. The Director's Office regularly uses these and we are running low. We'd rather recycle than buy brand new ones!



S.E.F.A. FINAL PARTICIPATION WEEK:

October 31st will mark the last day of your opportunity to participate. If you haven't joined the others from the libraries on west campus give it some thought! It is a great way to give to several different charities by one means. The rest of the year (when you receive those unwanted free labels in your home mail) you can ignore and toss them because you've already taken care of your obligation for the welfare of others.

Remember, you or someone in your family could be, or already have been, the recipient of an organization that is part of S.E.F.A.

Just a few of those listed in the brochure : The Nature Conservancy, Alzheimer's Research Foundation, Hospice Care Network, Tiger Woods Foundation, Ronald McDonald House Charities, Mother Against Drunk Driving, Reading Is Fundamental (RIF), Long Island Museum of American Art, History and Carriages, stony Brook Child Care Services.