

HAUT-COMMISSARIAT DE LA RÉPUBLIQUE FRANÇAISE EN SYRIE ET AU LIBAN  
SERVICE DES ANTIQUITÉS ET DES BEAUX-ARTS  
BIBLIOTHÈQUE ARCHÉOLOGIQUE ET HISTORIQUE  
TOME XVI

Db

---

# ARSLAN-TASH

PAR

F. THUREAU-DANGIN

A. BARROIS

G. DOSSIN

ET

MAURICE DUNAND

---

*Publié avec le concours de l'Académie des Inscriptions et Belles-Lettres  
(Fonds de Clercq)*

---

ATLAS

PARIS

LIBRAIRIE ORIENTALISTE PAUL GEUTHNER

13, RUE JACOB, VI<sup>e</sup>

---

1931



HAUT-COMMISSARIAT DE LA RÉPUBLIQUE FRANÇAISE EN SYRIE ET AU LIBAN  
SERVICE DES ANTIQUITÉS ET DES BEAUX-ARTS  
BIBLIOTHÈQUE ARCHÉOLOGIQUE ET HISTORIQUE  
TOME XVI

# ARSLAN-TASH

---

ATLAS



# ARSLAN-TASH

PAR

F. THUREAU-DANGIN

A. BARROIS

G. DOSSIN

ET

MAURICE DUNAND

---

*Publié avec le concours de l'Académie des Inscriptions et Belles-Lettres  
(Fonds de Clercq)*

---

ATLAS

PARIS

LIBRAIRIE ORIENTALISTE PAUL GEUTHNER

13, RUE JACOB, VI<sup>e</sup>

---

1931

LIBRARY OF  
THE DROPSIE COLLEGE







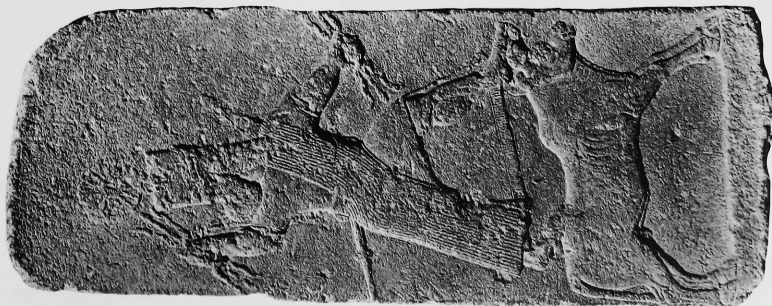




2



3

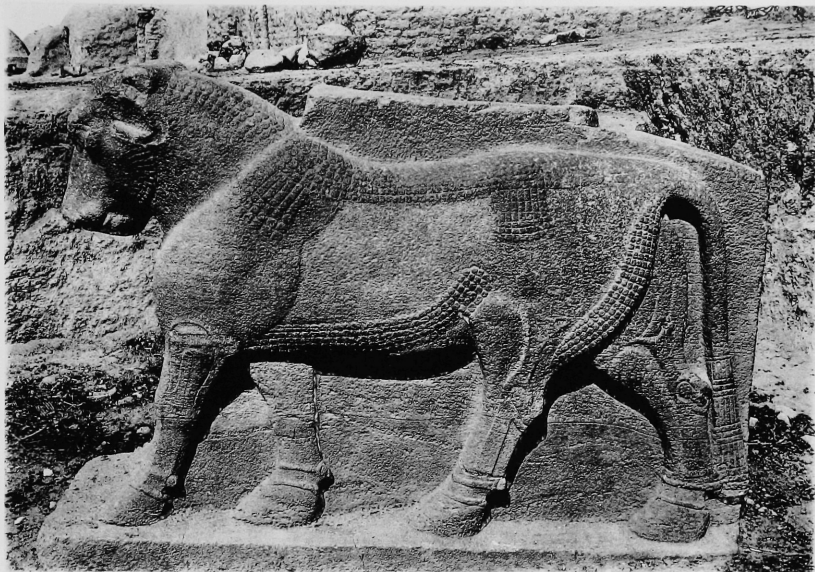


1

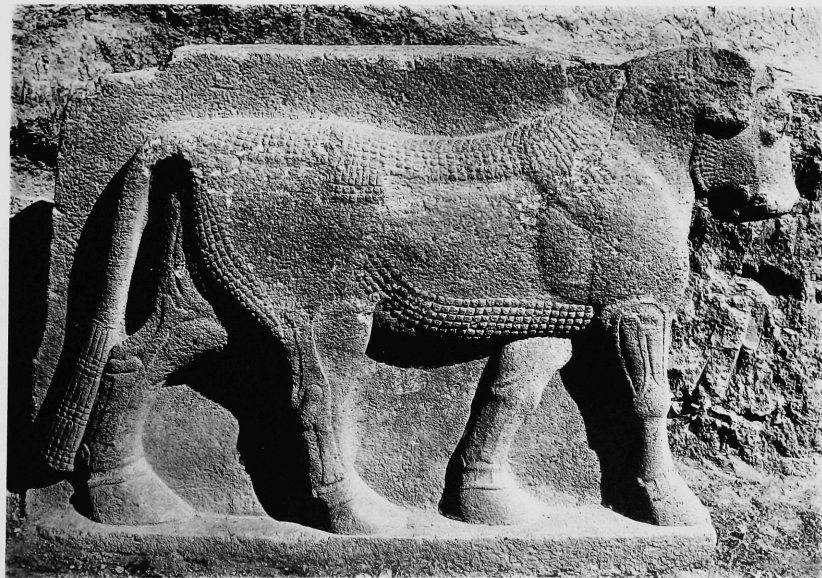






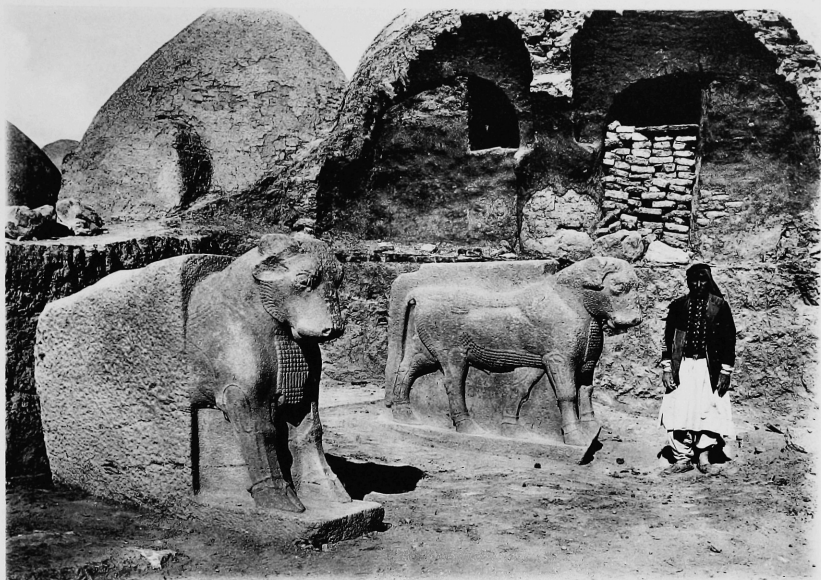


I



2





I



2





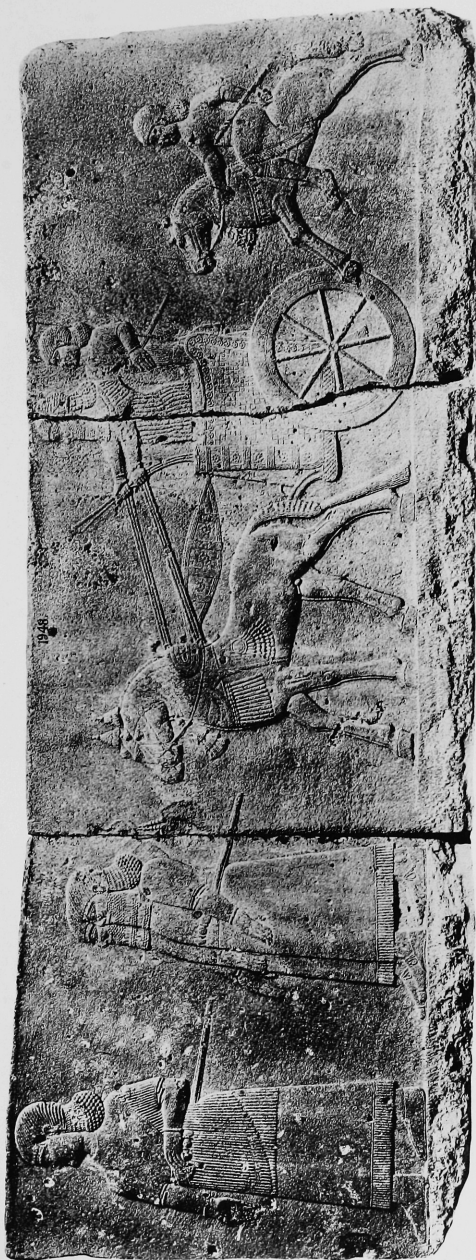


I



2













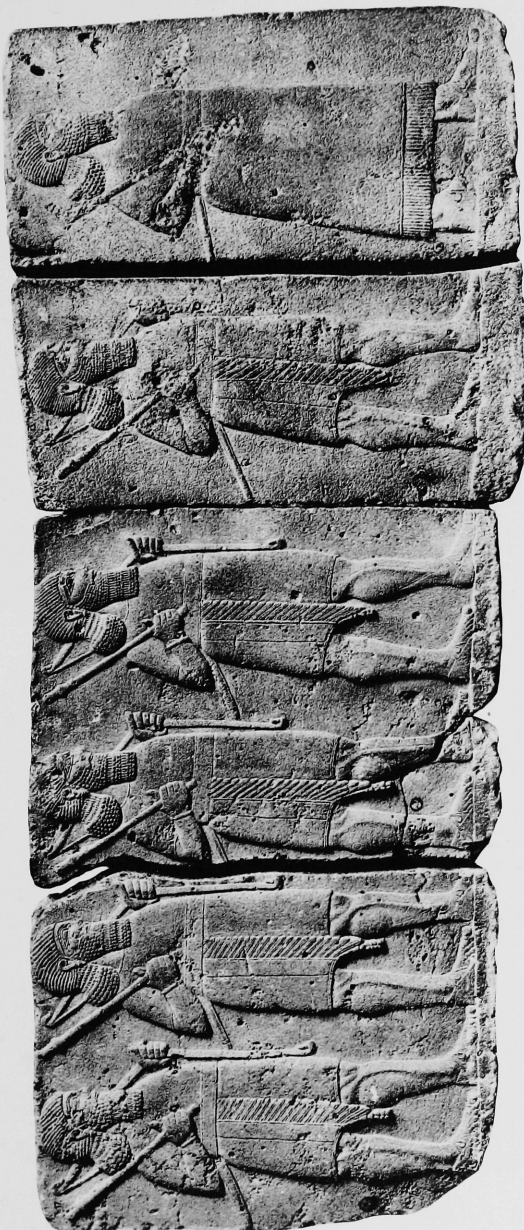
1



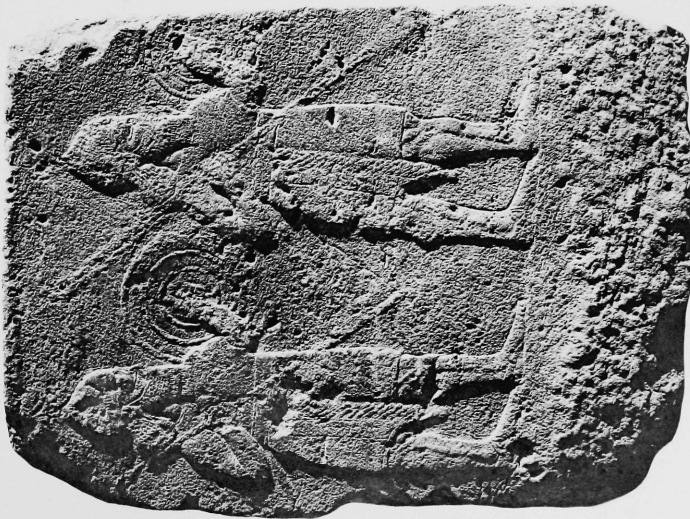
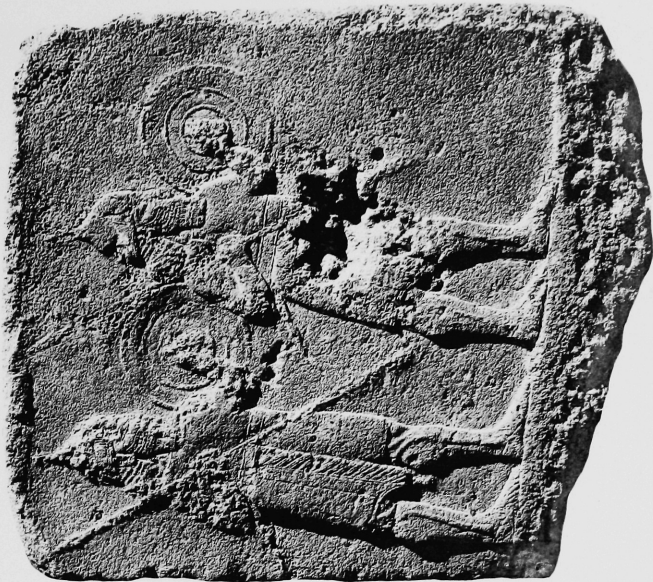
2















1



2



3





1



2



3



4





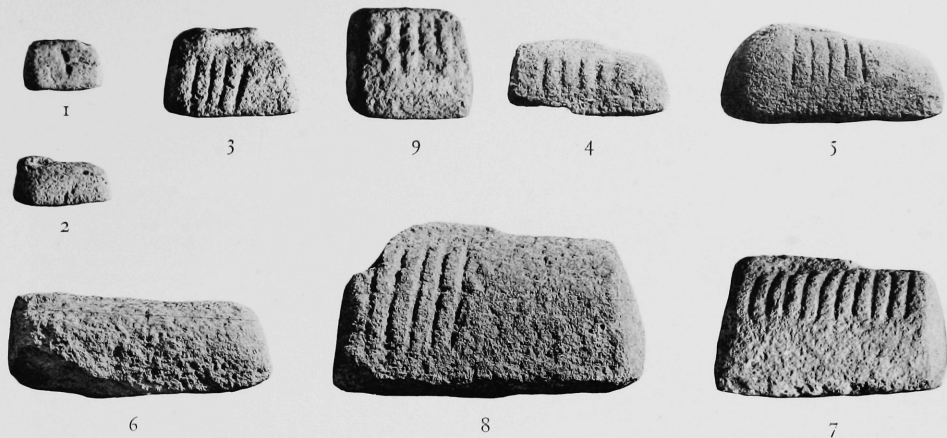


I



2









I



2





I



2







I

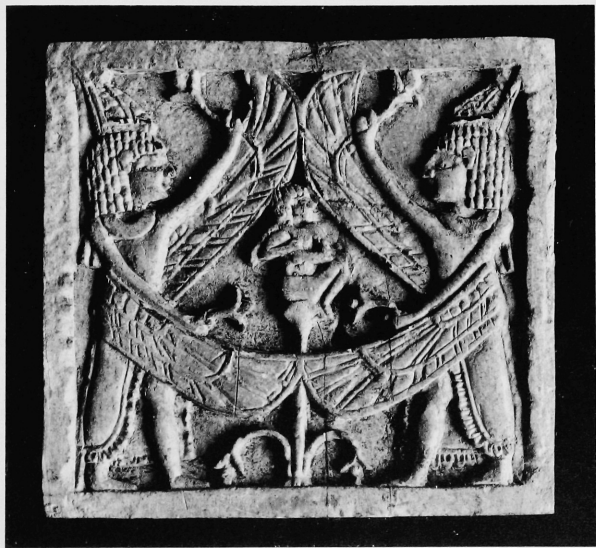


2





I



2





3



4





5



6







7



8





9



II



10



12





13



15



14



16

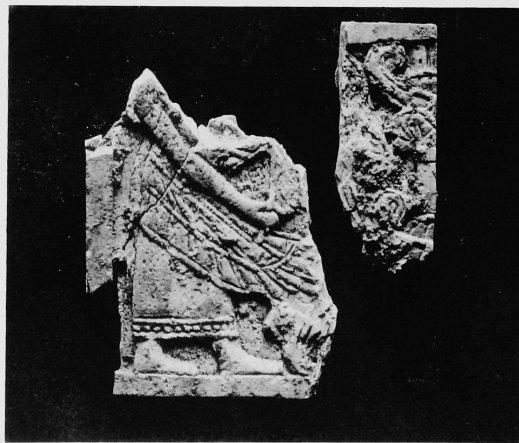




17



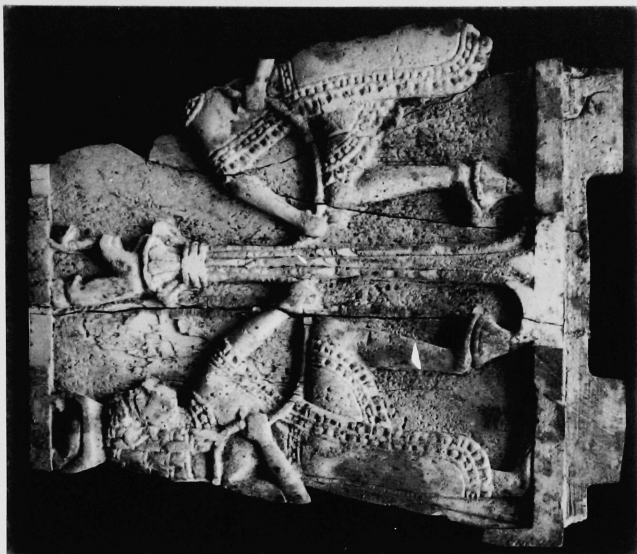
18



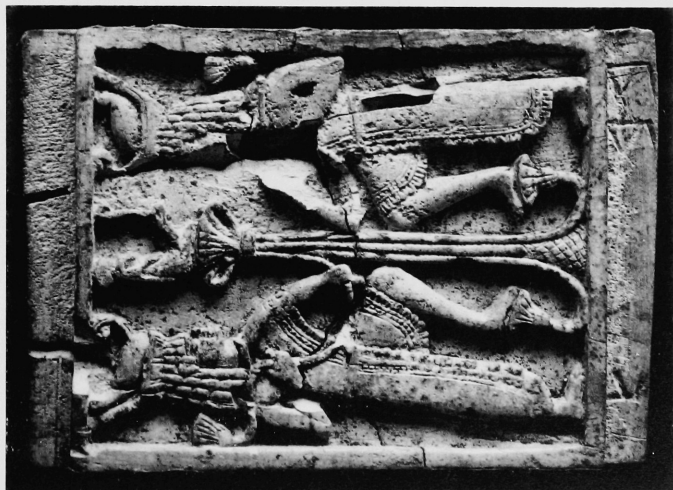
19







21

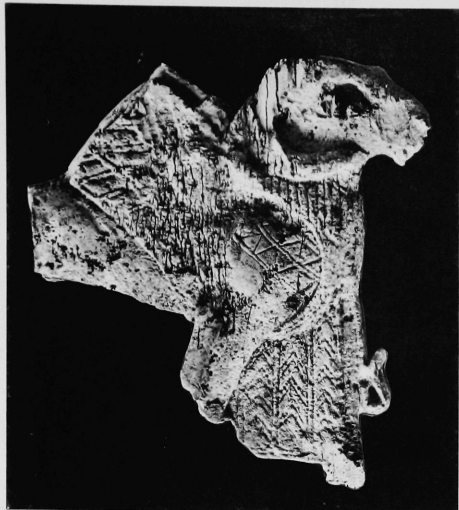


20

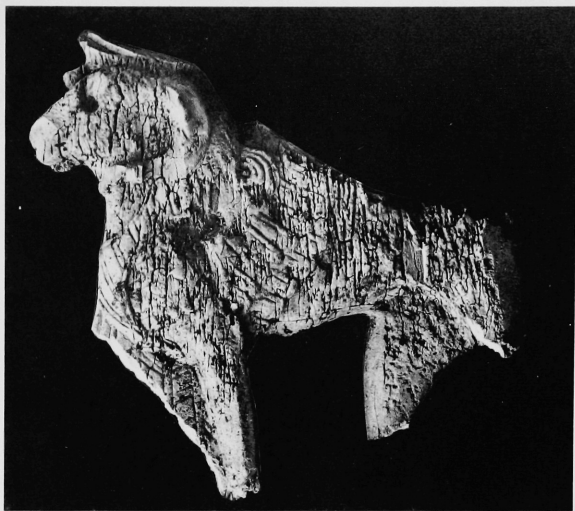








23



24



25





26



27







28



29



30

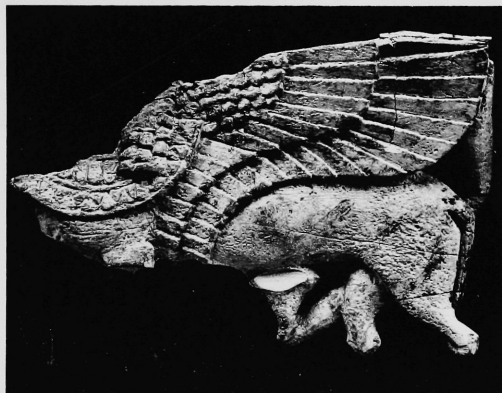




31



33



32



34



36



35





37



41



42



38



39

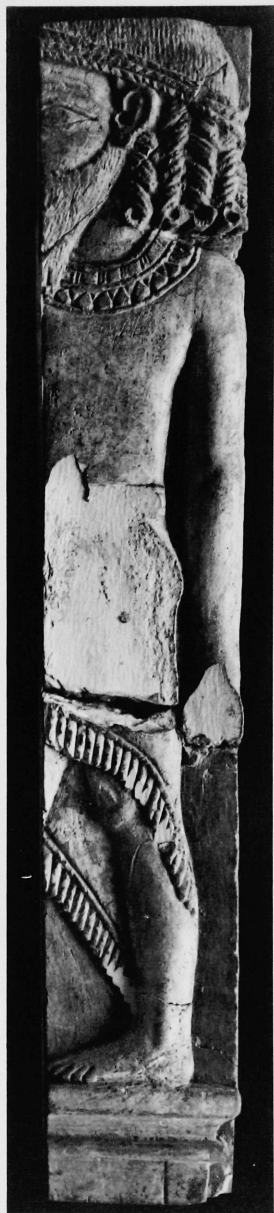


40





43



44



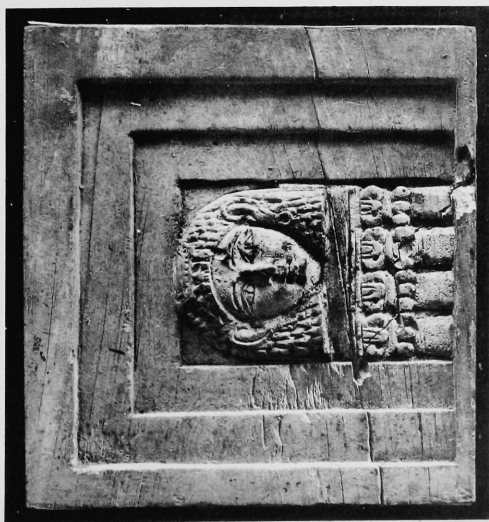




46



47



45





48



49



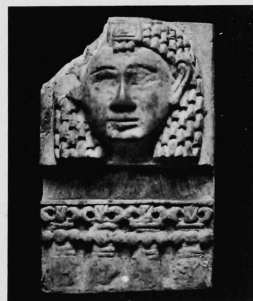
50



51



55



52



53



54





56



57



58



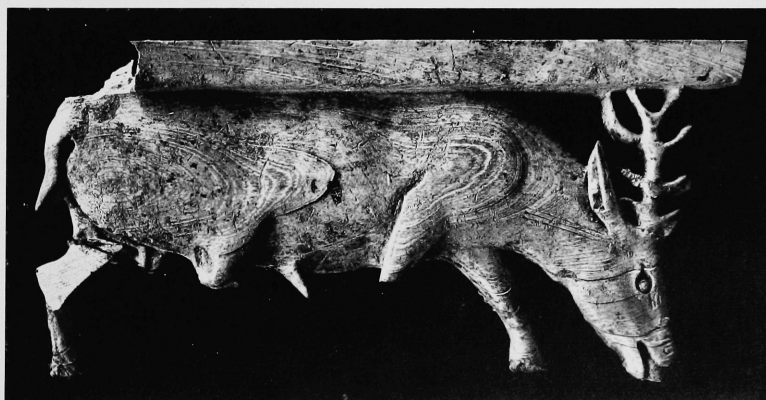
59



61

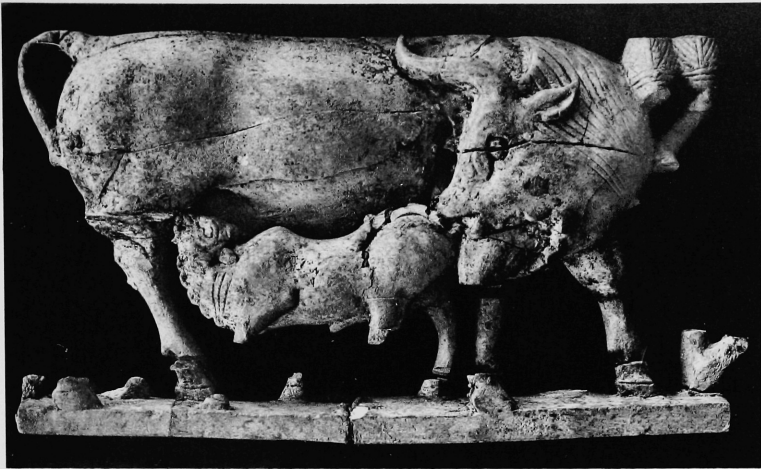


60



62





63



64



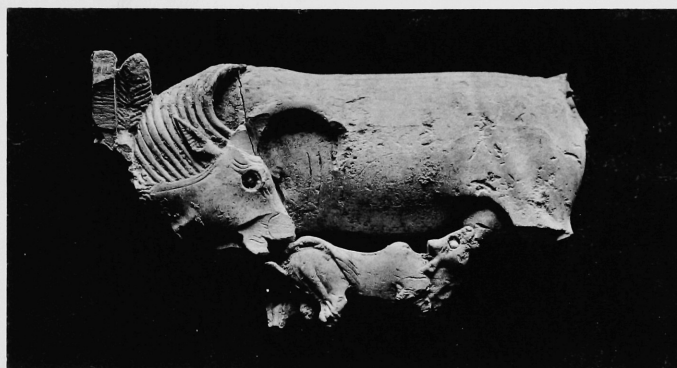
65



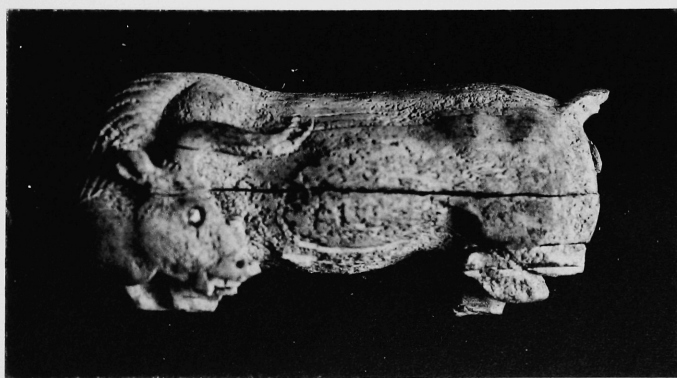




66



67



68





69



70

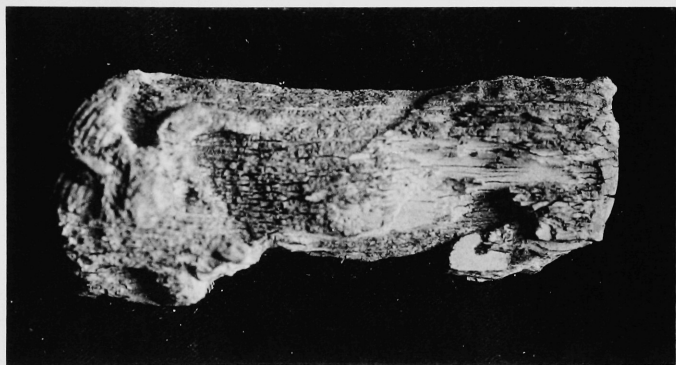


71

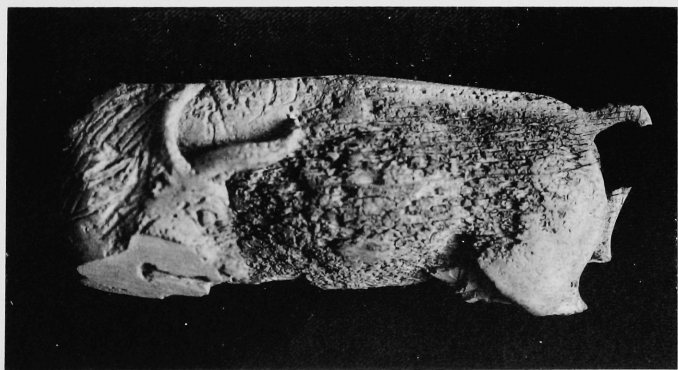




72



73

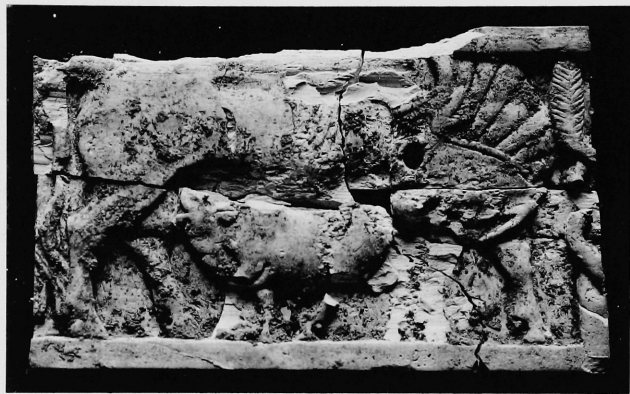


74





75



76



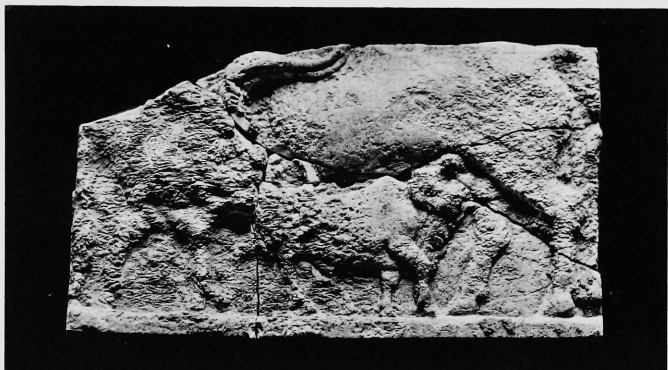
77



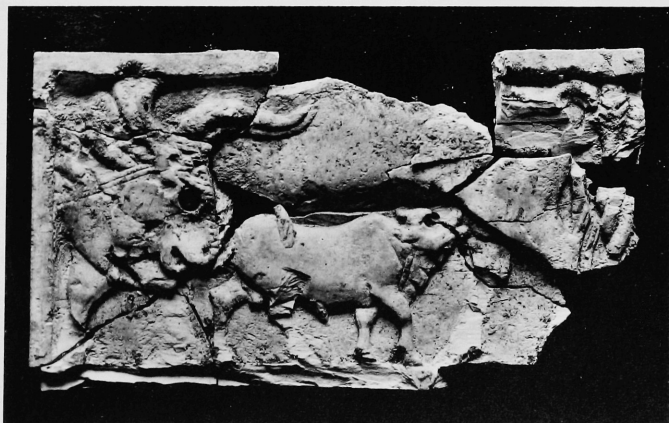




78



79



80





81



82



83



86



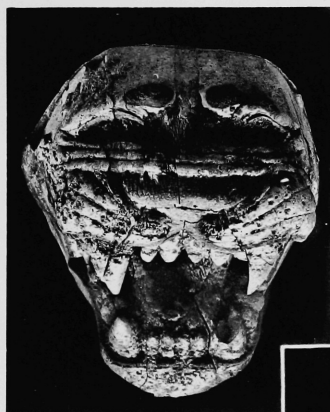
87



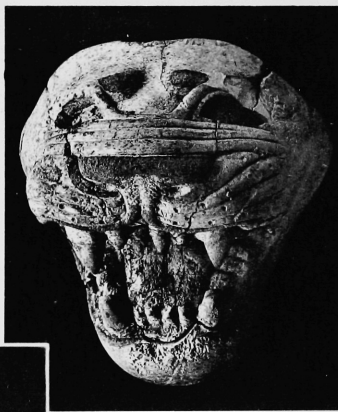
84



88

89  
(réduit)

85

90  
(réduit)

91 (réduit)





92 (réduit)



94



93 (réduit)



95

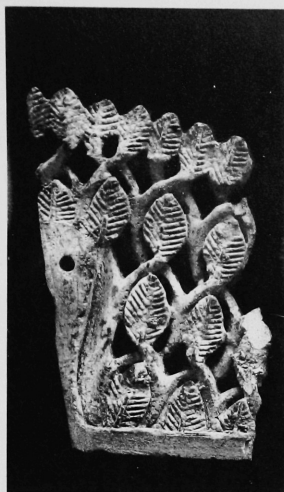


96





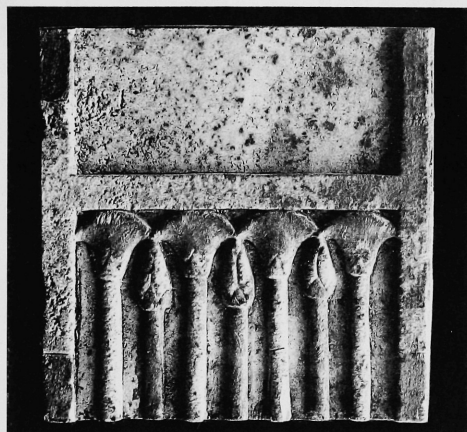
97



99



100



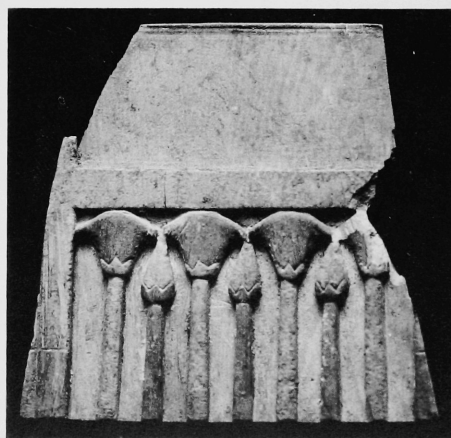
101



98



102



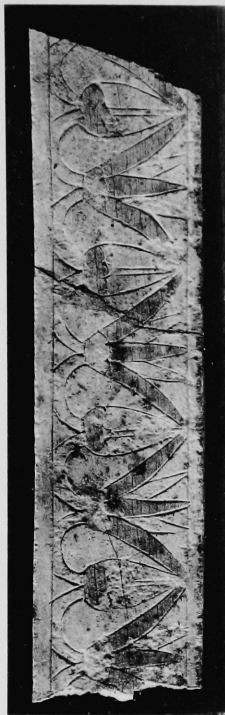
103







105



106

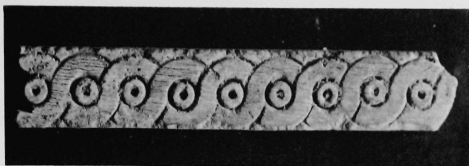


104

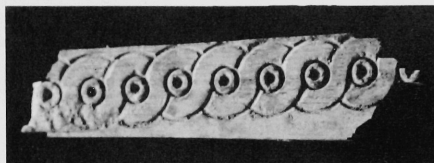


107





108



109



110



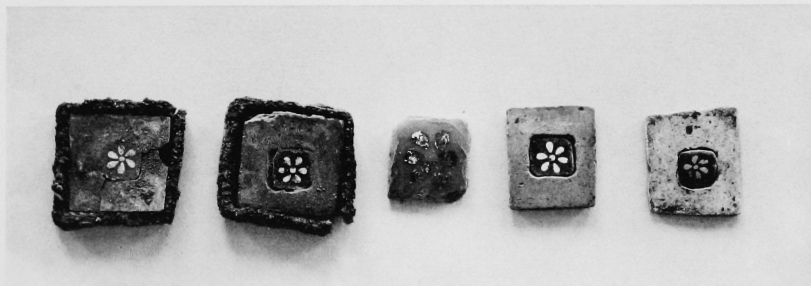
111



112 a



112 b



113

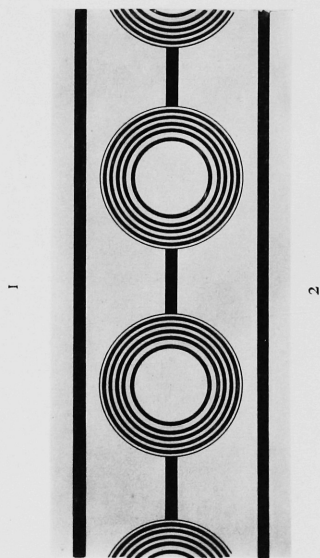
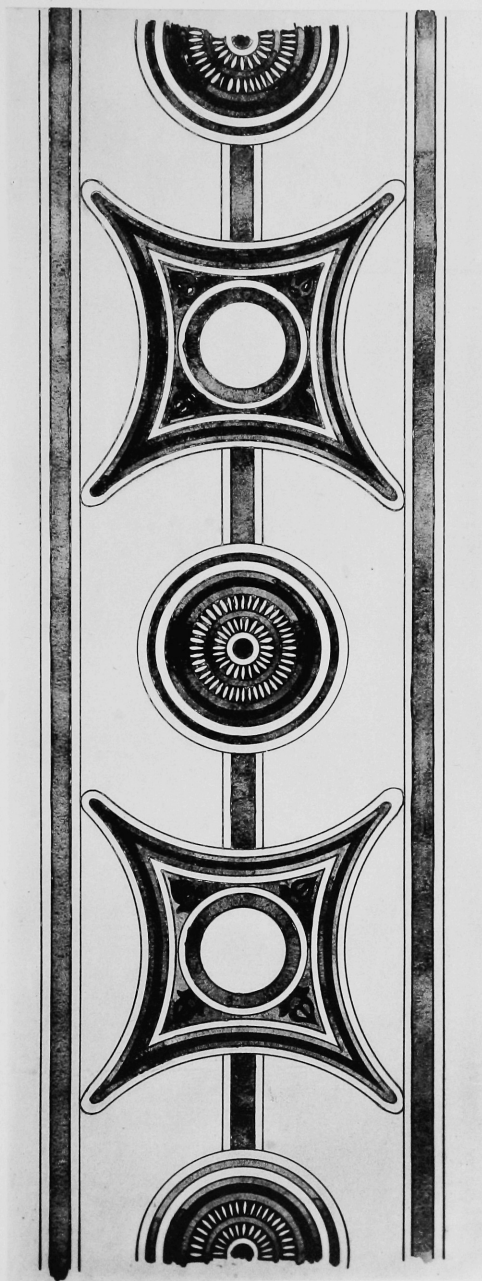
114

115

116

117





1

2













---

TOURS, IMPRIMERIE ARRAULT ET C<sup>ie</sup>

---