

# Abu Salabikh Excavations Volume 4

**The 6G Ash-Tip and its contents:  
cultic and administrative discard from the temple?**



## Illustrations

MUSEUM  
DS  
70.5  
A28  
A28  
1983

BRITISH SCHOOL OF ARCHAEOLOGY IN IRAQ  
1993



Abu Salabikh Excavations  
Volume 4

**The 6G Ash-Tip and its contents:  
cultic and administrative discard from the temple?**

Edited by Anthony Green

Illustrations

BRITISH SCHOOL OF ARCHAEOLOGY IN IRAQ  
1993

ISBN 0 903472 13 9

Printed in England by Stephen Austin/Hertford

# LIST OF ILLUSTRATIONS

## Chapter 1

- Fig. 1:1 Plan of the Main Mound.
- Fig. 1:2 The Ash-Tip during excavation, April 1981.
- Fig. 1:3 The sounding in 6G66d in 1975.
- Fig. 1:4 6G66d west baulk: ash lines and clay lined features.
- Fig. 1:5 6G66 west side: features in 6G66a and on surface of 6G66c (ash lines and clay-filled cuts).
- Fig. 1:6 Detail of 6G66a: northern enclosure wall of Ash-Tip and mudbrick collapse, looking northwest.
- Fig. 1:7 6G66a: northern enclosure wall after removal of upper phase, showing Pit u cutting through wall.
- Fig. 1:8 6G66a: Level II floor and walls from south.
- Fig. 1:9 Plan of the Ash-Tip and adjacent buildings in Area E.
- Fig. 1:10 6G66a: plan of Level II walls beneath Ash-Tip Phase 2.
- Fig. 1:11 6G66a: section X-Y (cf. Fig. 1:10) through Level II deposits after removal of Pit u.
- Fig. 1:12 Key to location of sections through the Ash-Tip on site grid.
- Fig. 1:13 North-south section K-L through Southern Corridor of Central Complex, northern enclosure wall of Ash-Tip, Ash-Tip Phases 1, 2 and 3 and Grave 10.
- Fig. 1:14 North-south section O-P and east-west section P-Q through Ash-Tip Phase 2, including 6G66 sondage.
- Fig. 1:15 West-east section T-U through Ash-Tip Phases 2 and 3 and Grave 6.
- Fig. 1:16 North-south section V-W through western part of Ash-Tip (Phases 2 and 3).
- Fig. 1:17 West-east section A-B through Ash-Tip (Phase 3), pits disturbing the Tip on its western perimeter (context S) and Grave 177.
- Fig. 1:18 Microscopic thin-section, Ash-Tip Phase 2: dark layers, plain polarised light.
- Fig. 1:19 Microscopic thin-section, Ash-Tip Phase 2: lighter layers, plain polarised light.
- Fig. 1:20 Microscopic thin-section, Ash-Tip Phase 3: basal layer, plain polarised light.
- Fig. 1:21 Microscopic thin-section, Ash-Tip Phase 3: serially stratified upper layers, plain polarised light.
- Fig. 1:22 6G66d: plan of Ash-Tip equid skeleton and its location.
- Fig. 1:23 6G66d: view of Ash-Tip equid skeleton, looking west.

- Fig. 1:24 Plan of Ash-Tip with locations of intrusive features such as graves, pits and drain.
- Fig. 1:25 Plans of burials within the Ash-Tip: Graves 6, 34, 130, 133, 146, 175, 178, 186.
- Fig. 1:26 Stone bead from Grave 6 (No. 5).
- Fig. 1:27 Pottery vase from Grave 14 (No. 2a).
- Fig. 1:28 6G66d: view of infant skeleton within the deposits of Phase 2 of the Ash-Tip (Grave 34).
- Fig. 1:29 6G76b/d: view of drain cutting Ash-Tip, looking south.

## Chapter 2

- Fig. 2:1 Pattern of knots or maze on an Early Dynastic IIIa tablet.
- Fig. 2:2 Operation of door peg sealing.
- Fig. 2:3 Terminology of string description.
- Fig. 2:4 Peg (package) sealing.
- Fig. 2:5 Jar sealing.
- Fig. 2:6 Bar-chart showing the functional comparison of the Abu Salabikh sealings.
- Fig. 2:7 Bar-chart showing function and iconography of the Ash-Tip sealings.
- Fig. 2:8 Photographs of different types of Ash-Tip sealings.
- Fig. 2:9 Photographs of different types of Ash-Tip sealings (ctd.).
- Fig. 2:10 Stamp seal **1** and impression.
- Fig. 2:11 Cylinder seal **2** and impression.
- Fig. 2:12 Cylinder seal **3** and impression.
- Figs. 2:13-181 Photographs and drawings of individual sealings (**4-175**).
- Fig. 2:182 Clay sealing **224**

## Chapter 3

- Fig. 3:1 a-f Group photographs of miscellaneous animal figurines
- Fig. 3:2 Human figurines **262-267**.
- Fig. 3:3 Human figurines **270-272**.
- Fig. 3:4 Human figurines **273-276**.
- Fig. 3:5 Human figurines **277-282**.
- Fig. 3:6 Human figurines **283-285, 287**.
- Fig. 3:7 Human figurines **288-297**.
- Fig. 3:8 Human figurines **298-301, 306**.
- Fig. 3:9 Figurines of pigs **309-315, 317a**.

- Fig. 3:10 Figurines of equids **318-325**.
- Fig. 3:11 Figurines of equids **326-330**.
- Fig. 3:12 Figurines of sheep and goats **334-344**.
- Fig. 3:13 Semi-complete figurines of unidentified animals **345-350**.
- Fig. 3:14 Headless bodies of figurines of unidentified animals **351-359**.
- Fig. 3:15 Headless bodies of figurines of unidentified animals **360, 363-365, 367, 369, 370-372**.
- Fig. 3:16 Model chariot body fragments: **394-396**.
- Fig. 3:17 Model chariot body fragments: **397-400**; yokes from model chariots: **402, 403**.
- Fig. 3:18 Wheels from model chariots **406-408, 412, 415**.

#### Chapter 4

- Fig. 4:1 a-f Group photographs of miniature vessels
- Fig. 4:2 Group photograph of miniature vessels from Ur.
- Fig. 4:3 Group photograph of miniature vessels from Al-Hiba.
- Fig. 4:4 Miniature vessels **432-449**.
- Fig. 4:5 Miniature vessels **450-463**.
- Fig. 4:6 Miniature vessels **464-472, 474-475, 477-478**.
- Fig. 4:7 Miniature vessels **473, 476, 479-490, 492-494**.
- Fig. 4:8 Miniature vessels **491, 495-507, 516-519**.
- Fig. 4:9 Miniature vessels **508-514, 521-531**.
- Fig. 4:10 Miniature vessels **532-542, 544-546**.

#### Chapter 5

- Fig. 5:1 Group photograph of pottery discs.
- Fig. 5:2 Examples of pottery discs: **554, 558, 580, 600, 624**.

#### Chapter 6

- Fig. 6:1 Examples of clay 'tokens' **649-658, 660, 662, 664-670**.
- Fig. 6:2 Examples of clay 'tokens' **671-673, 675-676, 678-684, 689-690, 694-696, 700**.
- Fig. 6:3 Examples of clay 'tokens' **698-699, 703-707, 709-710, 712, 714-715, 717**.

#### Chapter 7

- Fig. 7:1 Copy of tablet **722**.

## Chapter 8

Fig. 8:1 Examples of clay cones: **726, 735** and **736**.

Fig. 8:2 Clay cone **6G86:266**.

## Chapter 9

Fig. 9:1 Miscellaneous clay objects: **743-6, 749, 750, 752, 754, 755, 757, 758, 763, 766**.

## Chapter 10

Fig. 10:1 Conical bowls: **772-780**.

Fig. 10:2 Miscellaneous forms: **781, 785, 789, 794-797**.

Fig. 10:3 Coarse plate: **782**.

Fig. 10:4 Bowl rims: **799-821**.

Fig. 10:5 Jar rims: **822-837**.

## Chapter 11

Fig. 11:1 Stone vessel sherds **838-845**.

Fig. 11:2 Stone vessel sherds **846-849, 852**.

## Chapter 12

Fig. 12:1 Group photograph of grindstone fragments.

Fig. 12:2 Grinding stones of Group A (rubbers?): **853, 854, 857, 858, 860-4**.

Fig. 12:3 Grinding stones of Group B (flat forms): **865-9, 871-7**; miscellaneous: **879, 880**.

## Chapter 13

Fig. 13:1 Examples of Ash-Tip flints: **888-894**.

## Chapter 14

Fig. 14:1 The size of the distal end of the humerus of pig.

Fig. 14:2 The size of the distal humerus and tibia of sheep/goat.

Fig. 14:3a,b Examples of shells from the Ash-Tip.

## Chapter 16

Fig. 16:1 Miscellaneous stone items: **895-897**.

Fig. 16:2 Shell rings: **903-7**. Bone object: **913**.

Fig. 16:3 Copper alloy objects: **917, 918, 920, 921, 923, 926, 927, 930**.



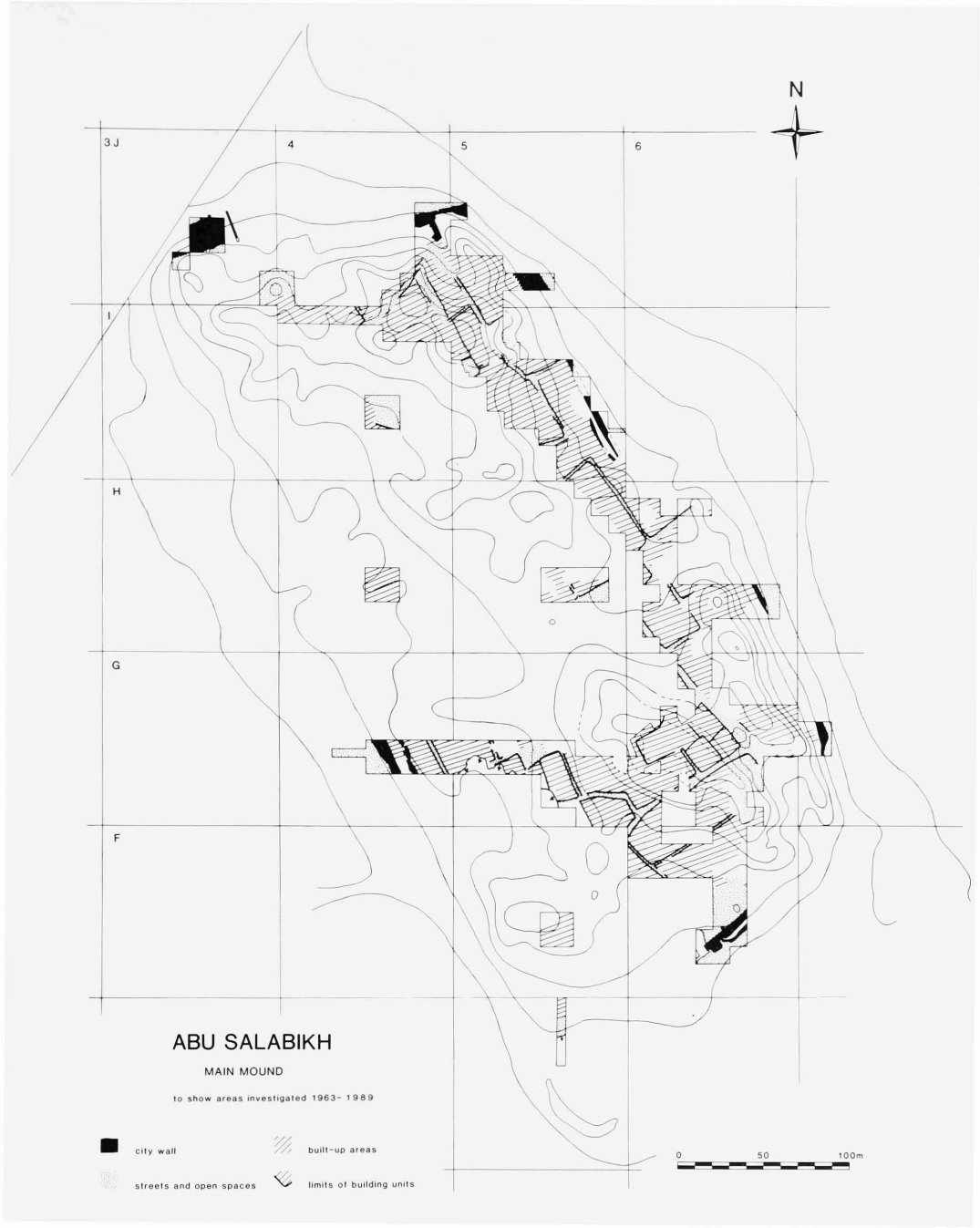


Fig. 1:1 Main Mound (after Iraq 52, p. 96). Scale 1:3000.

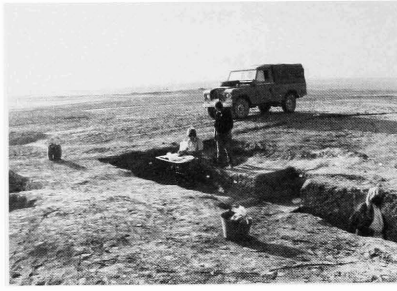


Fig. 1:2 The Ash-Tip during excavation, April 1981 (6G86a+b, viewed from the NW).

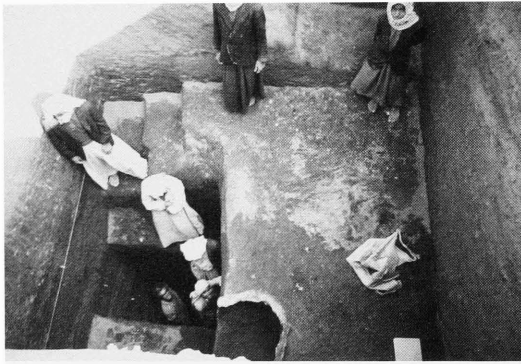


Fig. 1:3 The sounding in 6G66d in 1975 (from W, with 6G66b/d baulk on left).

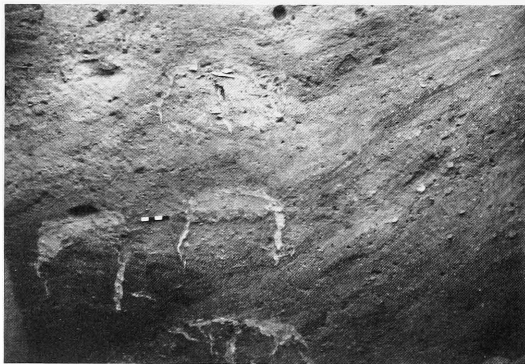


Fig. 1:4 6G66d west baulk: ash lines and clay lined features (cf. Fig. 1:13, reversed).

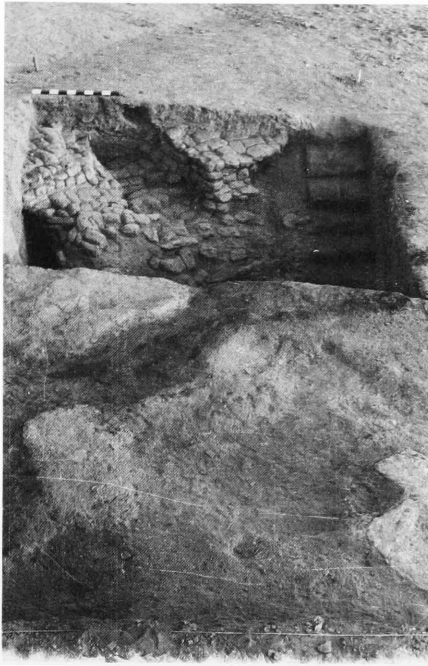


Fig. 1:5 6G66 west side in 1975, viewed from S: features in 6G66a and on cleared surface of 6G66c (ash lines and clay-filled cuts).



Fig. 1:6 Detail of 6G66a: northern enclosure wall of Ash-Tip and mudbrick collapse, looking northwest. The shaft of Grave 9 can be seen in the west section (cf. Fig. 1:14, reversed).



Fig. 1:7 6G66a: northern enclosure wall viewed from SW after removal of upper phase, showing clay-filled pit (= Pit u) cutting through wall (cf. Fig. 1:11).



Fig. 1:8 6G66a in 1976: Level II floor and walls from south (cf. Figs.1:10-11).

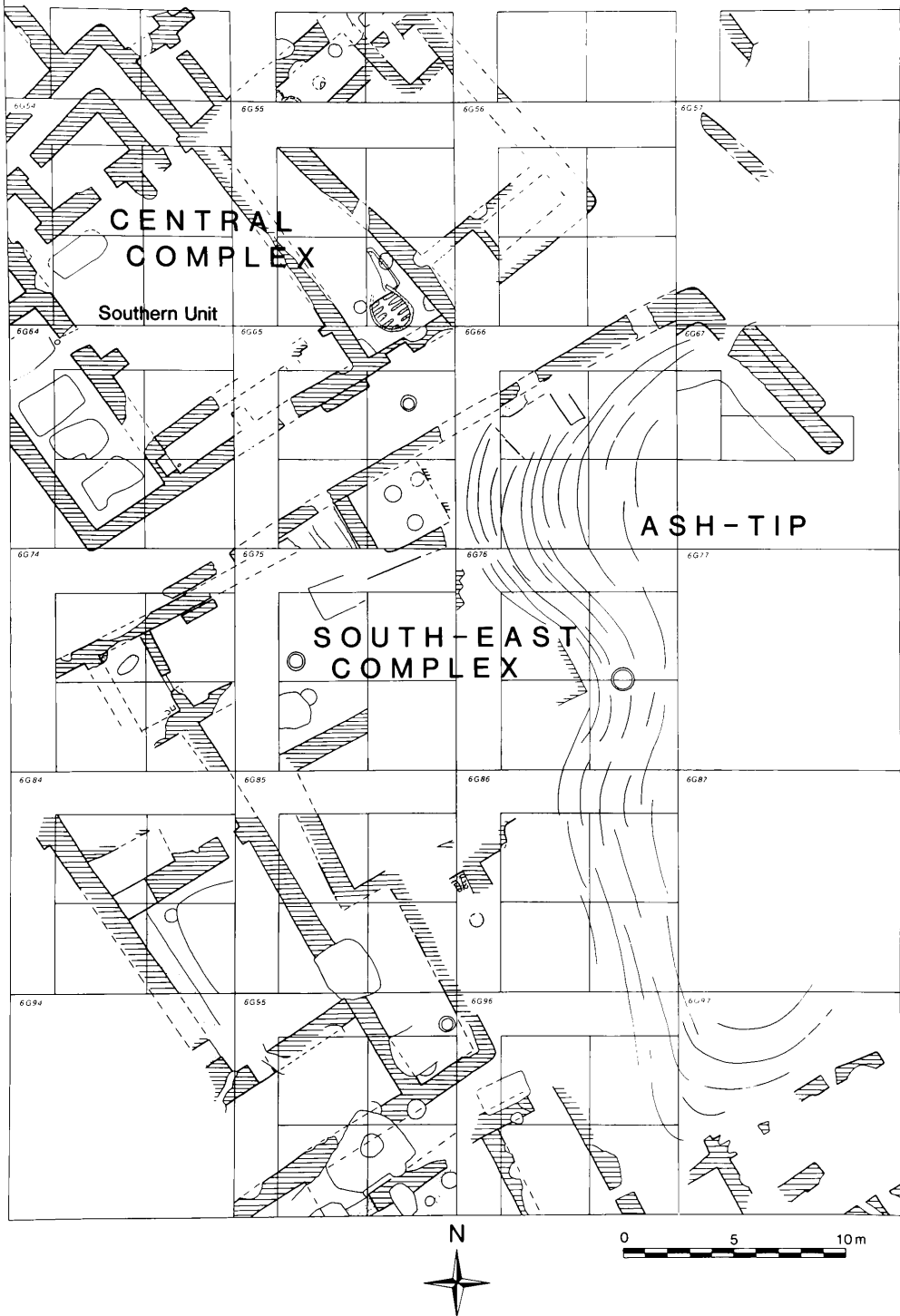


Fig. 1:9 Abu Salabikh 1975-86. Plan of the Ash-Tip and adjacent buildings in Area E. Scale 1:250.

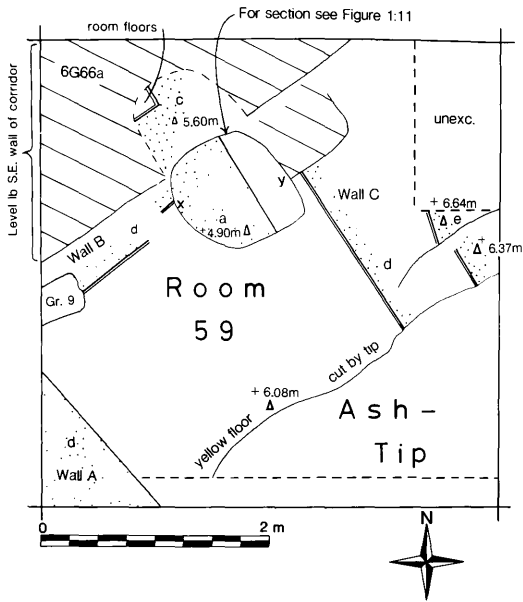


Fig. 1:10 6G66a: plan of Level II walls beneath Ash-Tip Phase 2. Scale 1:50. (For section X-Y see Fig. 1: 11.)

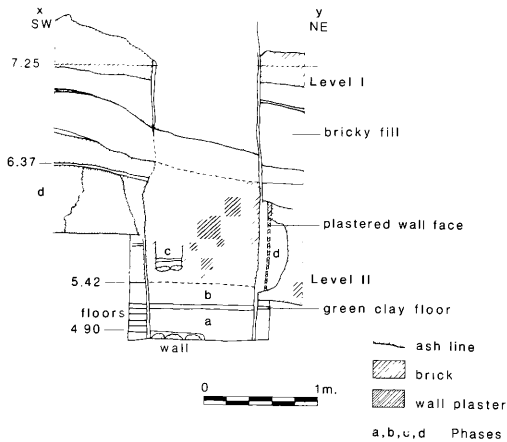


Fig. 1:11 6G66a: section X-Y (cf. Fig. 1:10) through Level II deposits after removal of clay of Pit u. Scale 1:50.

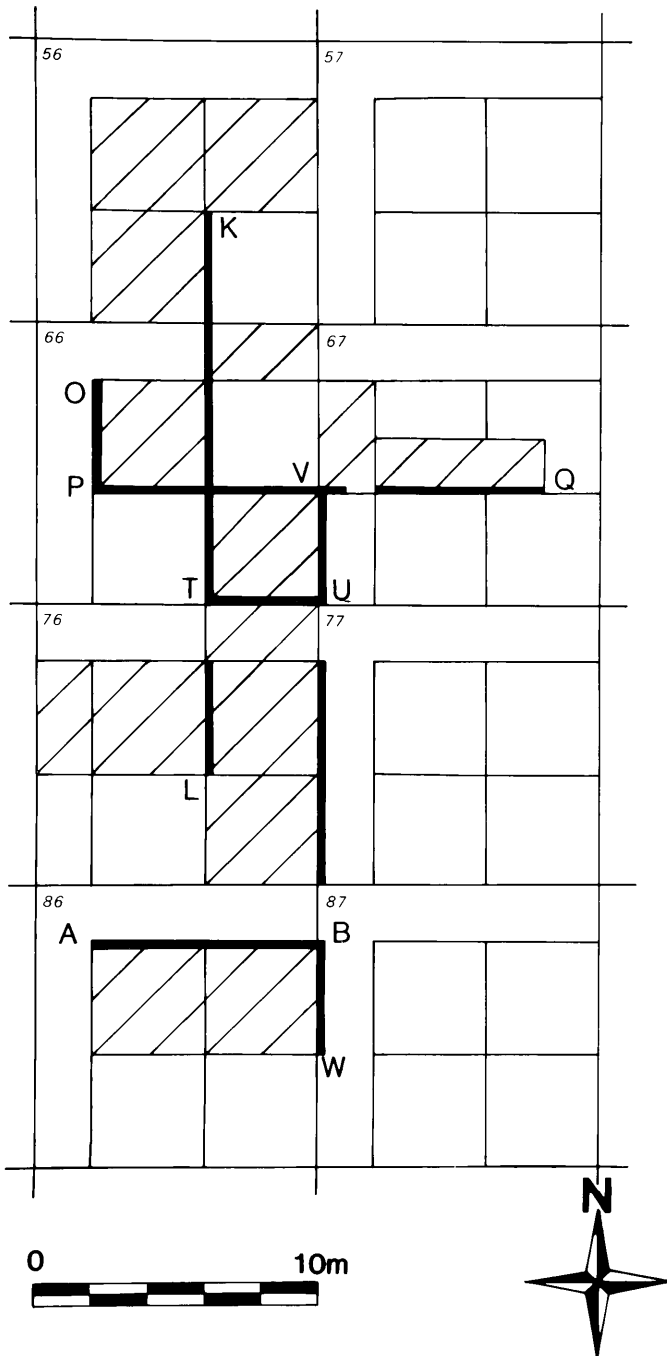


Fig. 1:12 Key to location of sections through the Ash-Tip on site grid (cf. Figs 1:13-17).

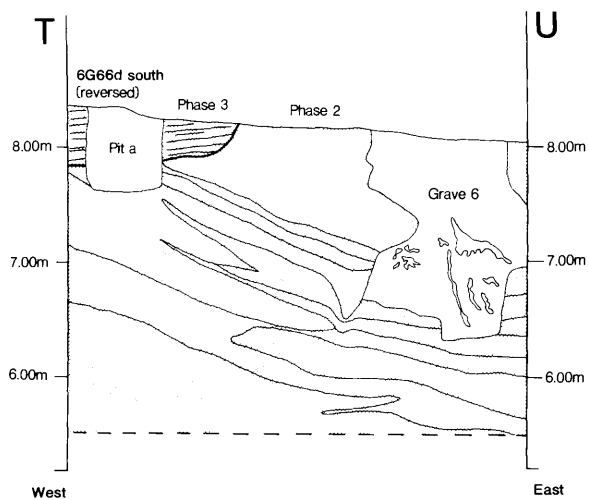


Fig. 1:15 West-east section T-U through Ash-Tip Phases 2 and 3 and Grave 6. Scale 1:50.

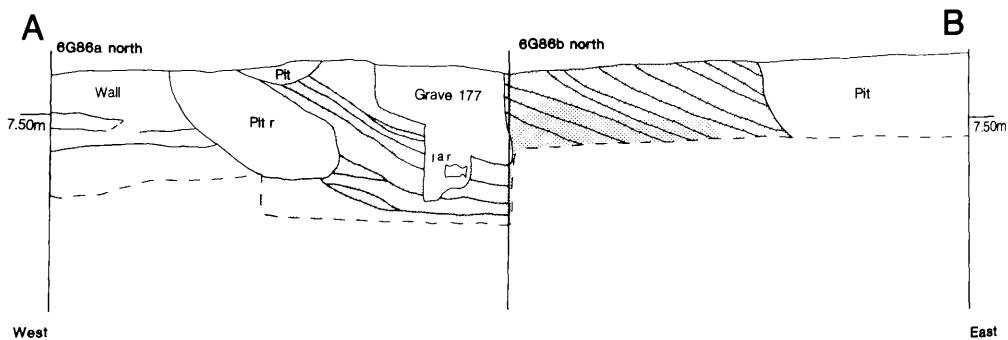


Fig. 1:17 West-east section A-B through Ash-Tip (phase 3), pits disturbing the Tip on its eastern perimeter (context S) and Grave 177. Scale 1:50.



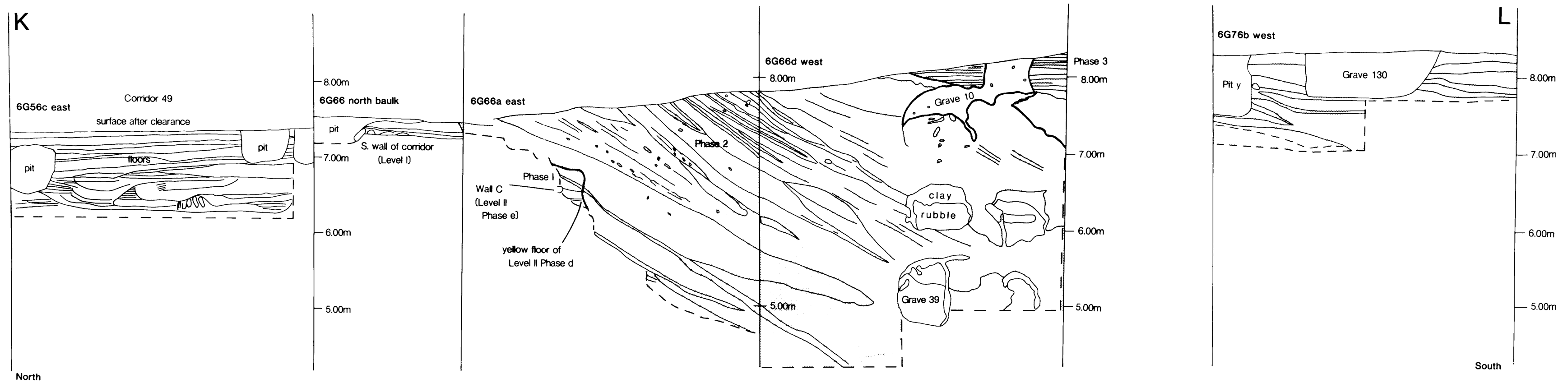


Fig. 1:13 North-south section K-L through Southern Corridor of Central Complex, northern enclosure wall of Ash-Tip, Ash-Tip Phases 1, 2 and 3 and Grave 10. Scale 1:50. (Cf. Fig. 1:4).

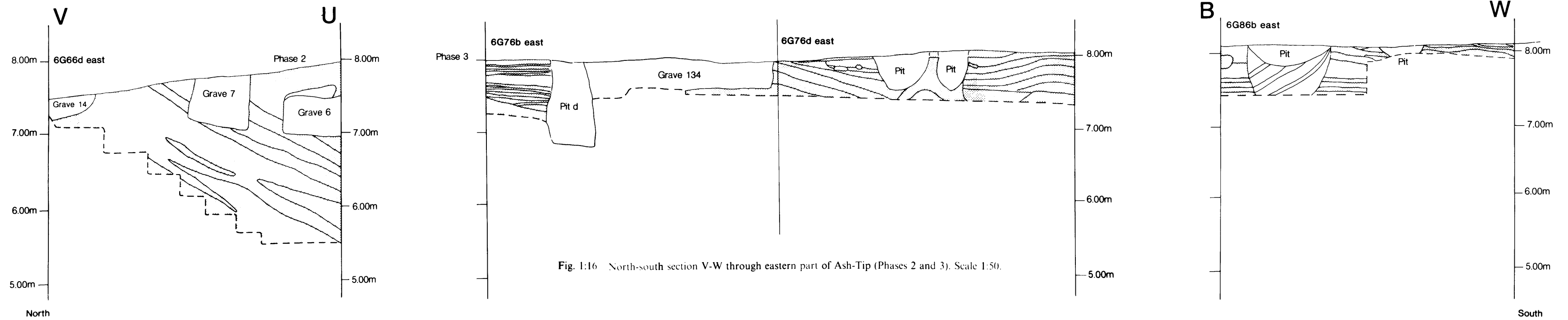


Fig. 1:16 North-south section V-W through eastern part of Ash-Tip (Phases 2 and 3). Scale 1:50.

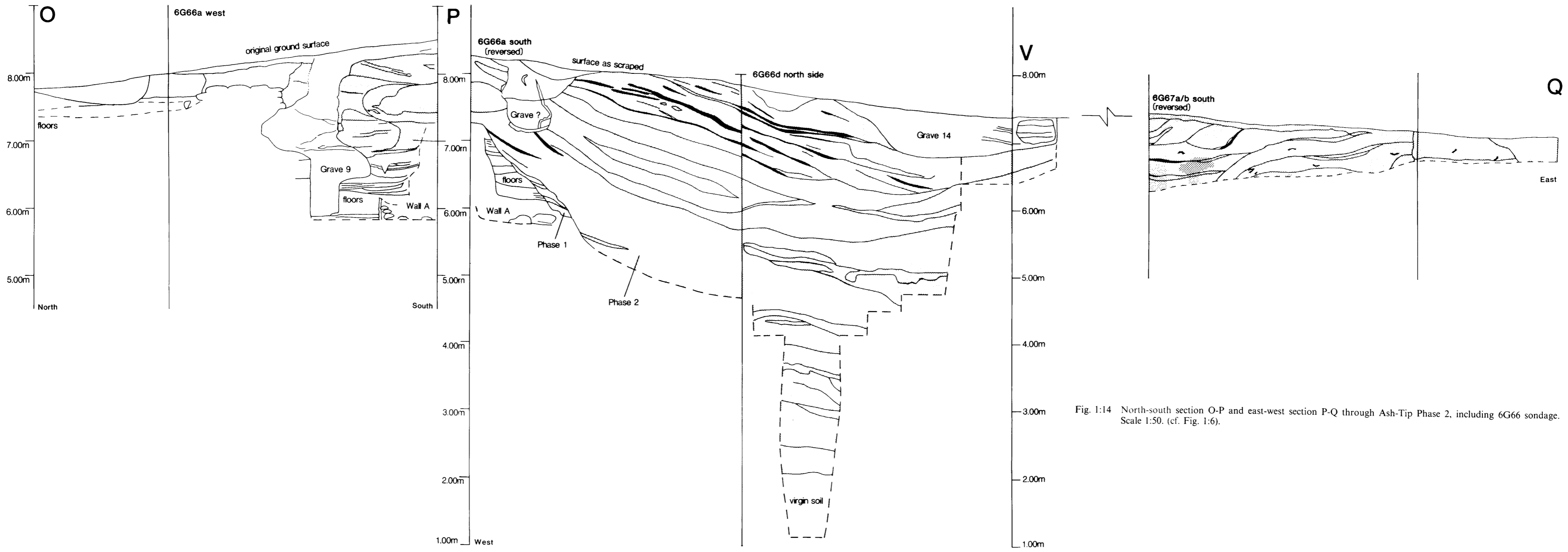


Fig. 1:14 North-south section O-P and east-west section P-Q through Ash-Tip Phase 2, including 6G66 sondage. Scale 1:50. (cf. Fig. 1:6).

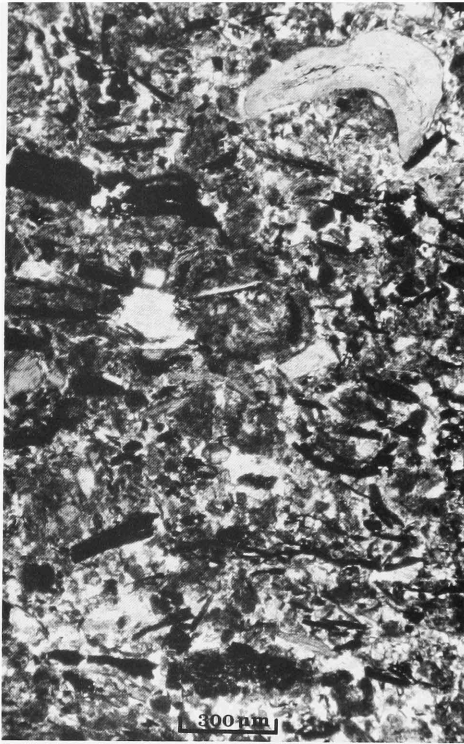


Fig. 1:18 Microscopic thin-section through darker deposit from Ash-Tip Phase 2. (Photo: W. Matthews).

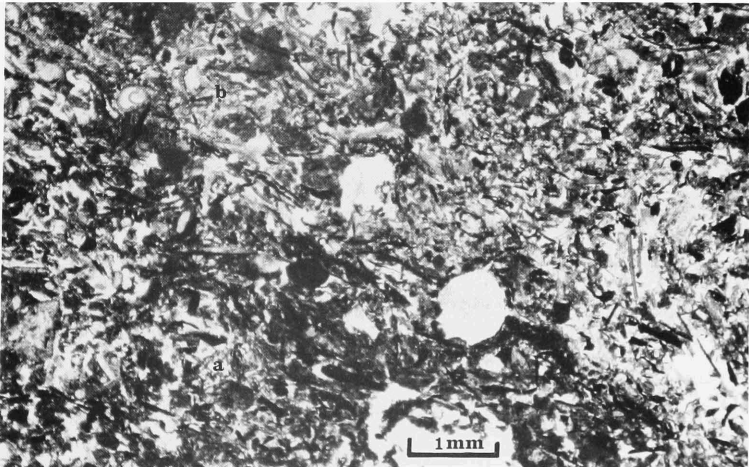


Fig. 1:19 Microscopic thin-section through lighter deposit from Ash-Tip Phase 2. (Photo: W. Matthews).

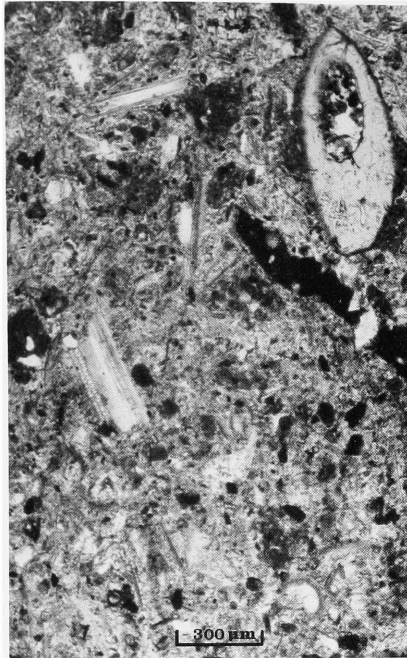


Fig. 1:20 Microscopic thin-section through basal layer of Ash-Tip Phase 3. (Photo: W. Matthews).

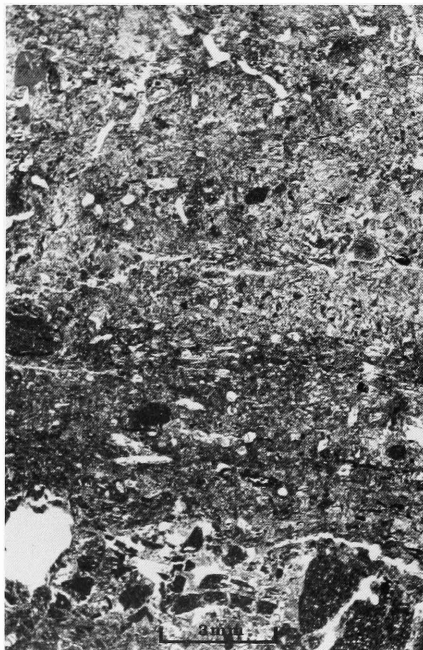


Fig. 1:21 Microscopic thin-section through upper layers of Ash-Tip Phase 3. (Photo: W. Matthews).

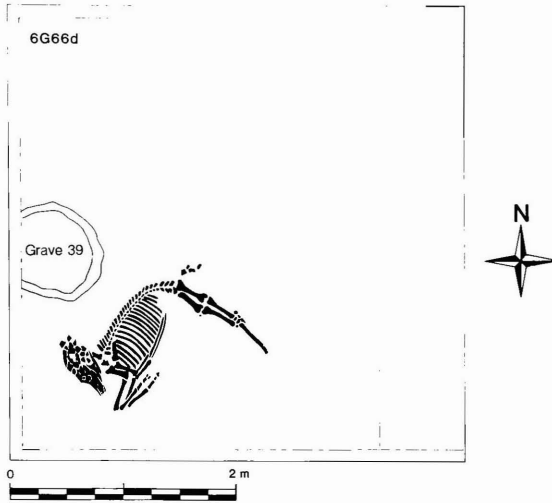


Fig. 1:22 6G66d: plan of Ash-Tip equid skeleton and its location. Scale 1:50.



Fig. 1:23 6G66d: view of Ash-Tip equid skeleton, looking west. (Photograph previously published: Postgate & Mooney 1976, Pl. XXIVa).

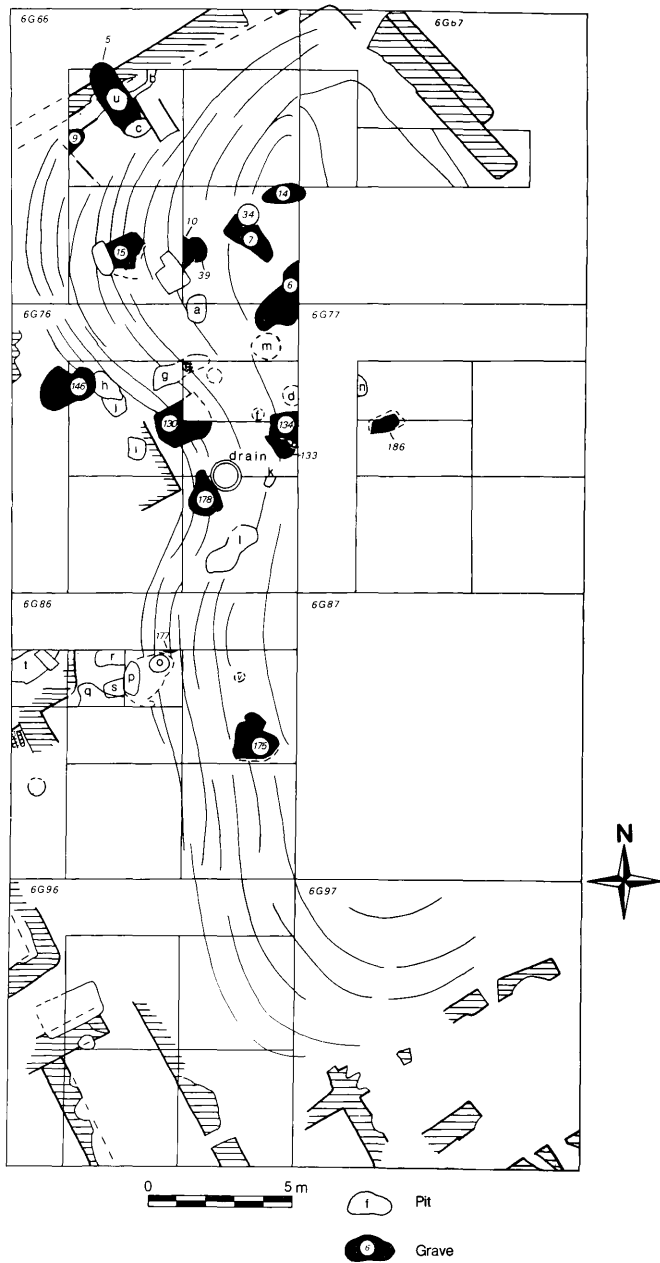


Fig. 1:24 Abu Salabikh 1975-86. Plan of Ash-Tip with locations of intrusive features such as graves, pits and the Akkadian/Ur III drain. Scale 1:200.

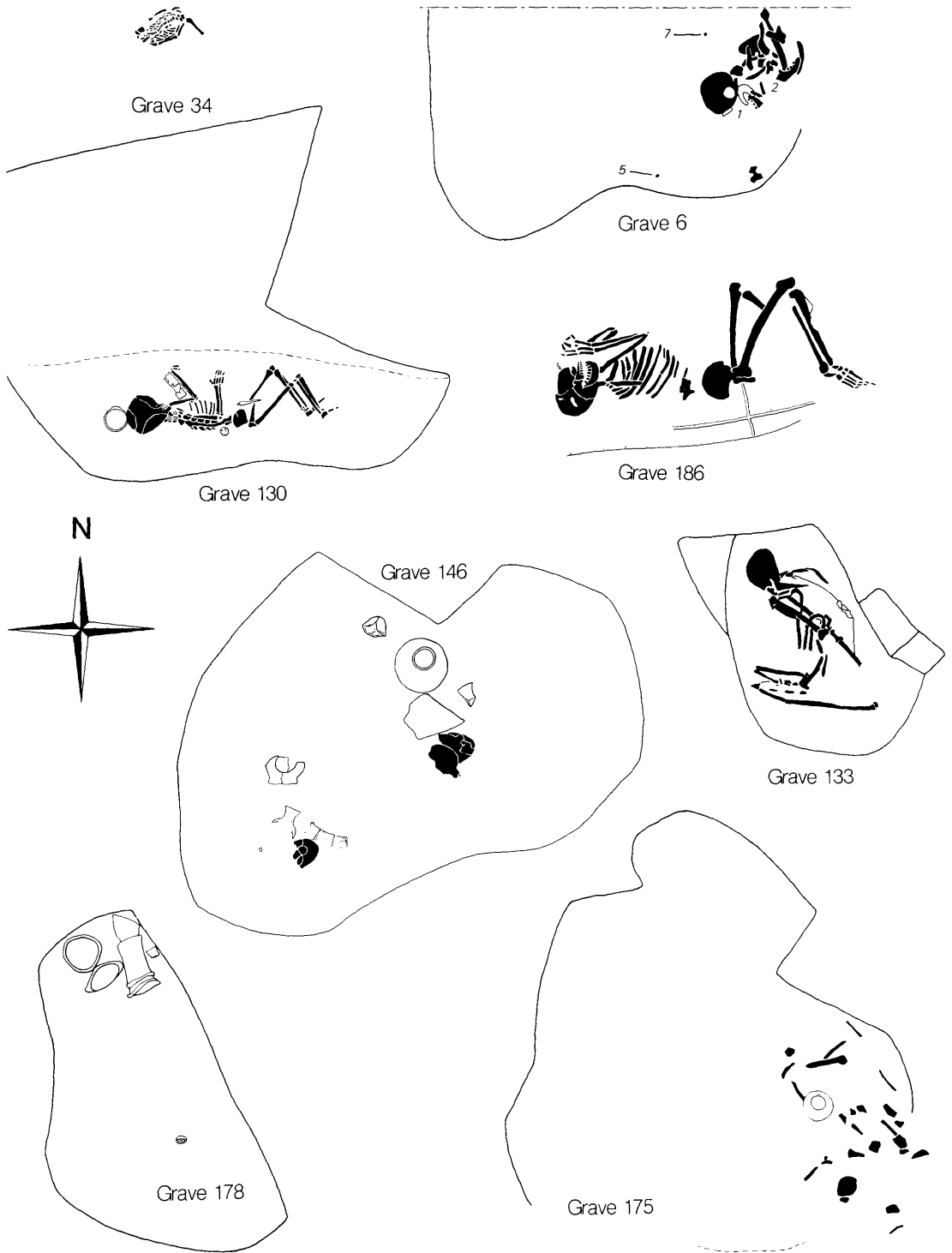


Fig. 1:25 Plans of burials within the Ash-Tip. Scale 1:20. (The numbers indicated on Grave 6 refer to the grave contents listed in §1.5.1).

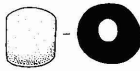


Fig. 1:26 Stone bead AbS 2463 from Grave 6 (No. 5). Scale 1:1.

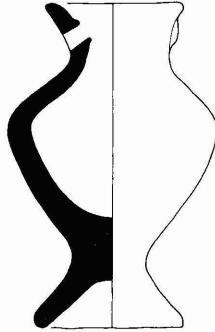


Fig. 1:27 Pottery vase 6G66:209 from Grave 14 (No. 2a). Scale 1:2.

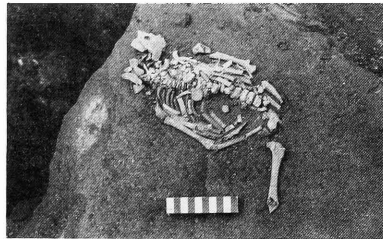


Fig. 1:28 6G66d: view of infant skeleton within the deposits of Phase 2 of the Ash-Tip (Grave 34; cf. Fig. 1:25. Photograph previously published: ASE 2, Pl. IX*d*.).

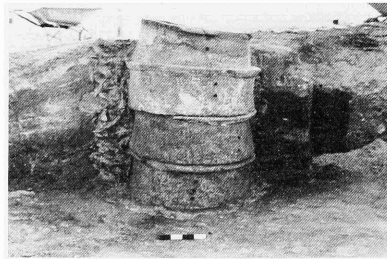


Fig. 1:29 6G76b d. View of Akkadian/Ur III drain cutting Ash-Tip, looking south. For location cf. Fig. 1:24.



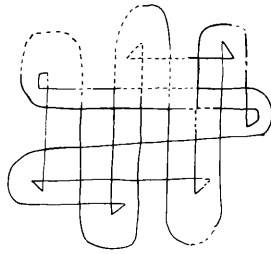


Fig. 2:1 Pattern of knots or maze on an Early Dynastic IIIa tablet from Abu Salabikh (AbST 222 = IAS 47; after Biggs 1974, Fig. 28).

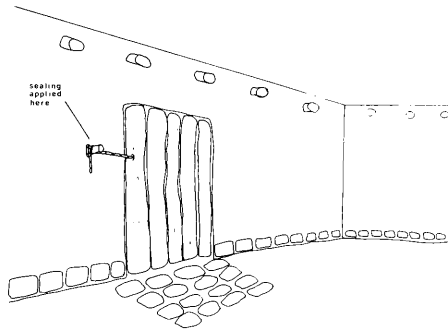
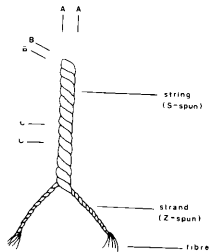
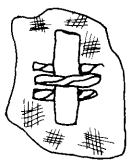


Fig. 2:2 Operation of door peg sealing.



- A - A string diameter
- B - B strand diameter
- C - C twist period

Fig. 2:3 Terminology of string description.



sealing reverse

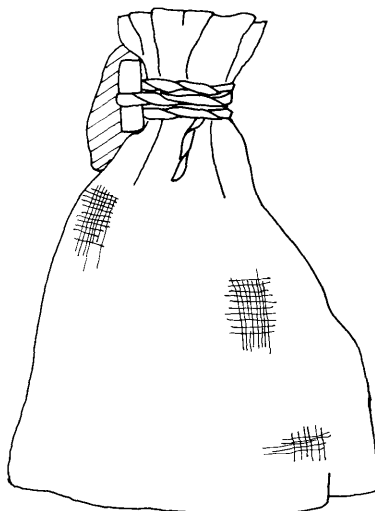
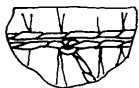


Fig. 2.4 Peg (package) sealing.



sealing reverse

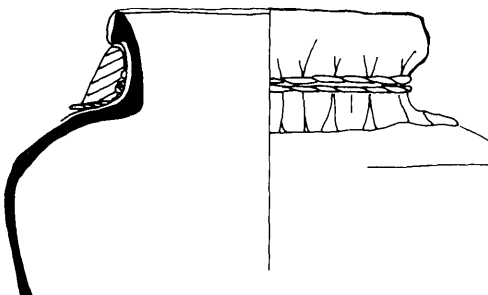


Fig. 2.5 Jar sealing.

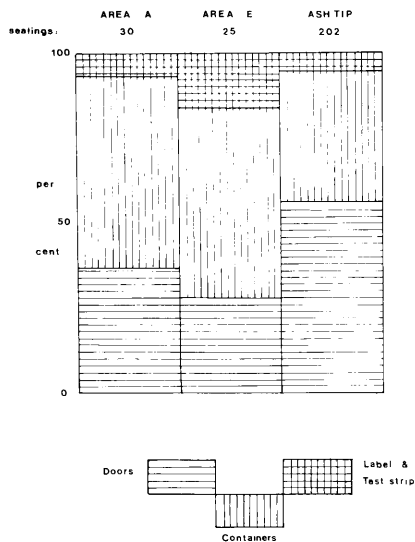


Fig. 2:6 Bar-chart showing the functional comparison of the Abu Salabikh sealings.

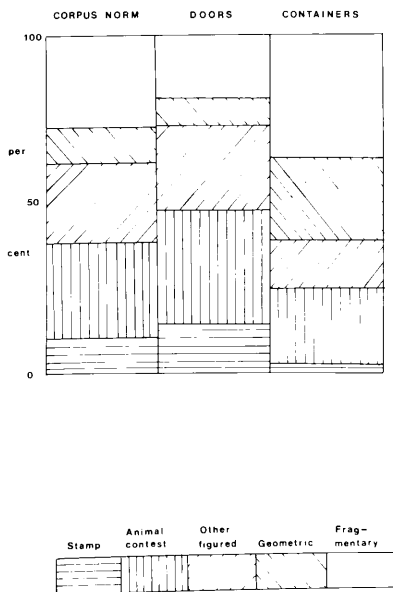
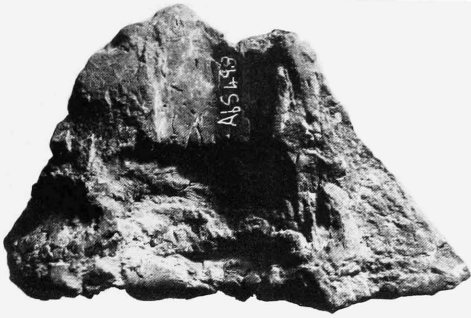


Fig. 2:7 Bar-chart showing function and iconography of the Ash-Tip sealings.

- 80** Door peg sealing (reverse).  
This piece has a shape typical of door peg sealings, with a level base and side sloping up to the top of the peg. The peg impression has faint grain marks, and has been wrapped three times by string of hair-like fibre.
- 40f** Door peg sealing (reverse).  
The very smooth, minutely pitted base of this door peg sealing is well seen here. The peg protrudes directly from the plastered wall surface, narrowing at the point where the string would have been wrapped round.
- 153** Door peg sealing (obverse).  
Fingerprints can be clearly seen revealing where pressure was applied around the edge of the sealing to make it adhere to the wall surface impressed on the reverse side.
- 13** Door peg sealing (reverse and cast of reverse).  
A fine example of an Ash-Tip door peg sealing. The peg impression has a very smooth surface, perhaps of a large reed or baked clay. Four rows of Z-spun string circle the peg, while a fifth row leads off at the base, which had been fixed to a plastered wall.
- 189** Door(?) peg sealing (reverse and cast of reverse).  
The peg has a very smooth surface, again probably of reed. Scattered hairs from the string can readily be seen.



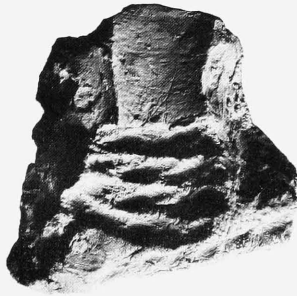
80



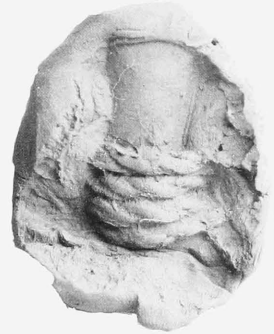
40f



153



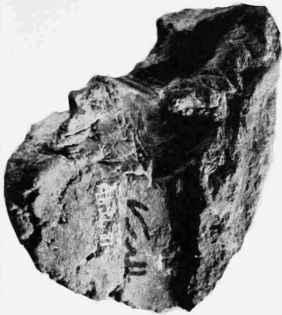
13



189

Fig. 2:8 Different types of Ash-Tip sealings

- 26 Door(?) peg sealing (reverse).  
The peg impression has grain marks probably from wood. Rather untidy string has been wound around the peg.
- 35a Peg (package?) sealing (reverse).  
A narrow peg impression, with smooth texture, is circled by two rows.
- 125 Peg (package?) sealing (reverse).  
The string impression consists of fibres of varying thickness, perhaps goat-hair mixed with strands of vegetable matter.
- 140 Peg (package?) sealing (reverse).  
The peg impression has clear, coarse grain marks, and is 'L'-shaped in section, perhaps from the mid-rib of a palm frond.
- 106 Vessel sealing (reverse).  
This pot sealing has impressions of string above coarse creases, probably from a leather covering.
- 63b Package or bale (?) sealing (reverse).  
String impressions across the reverse, in the middle of which there is a knot in the string.
- 238 Sealing with reed matting impressions (reverse).  
There are clear impressions of split reed matting, pierced by a single row of string.
- 88 Wooden peg (from box?) sealing (reverse).  
The peg impression has a grained mixture, also with parallel grooves at right angles to the grain. There are also wood impressions on the base.
- 157 Box(?) sealing (reverse).  
This linear design reflects a carved or moulded surface, probably a box, into which the sealing has been applied.
- 179 Sealing with reed impressions (reverse).  
Grain impressions of narrow reeds are clearly visible.



26



35a



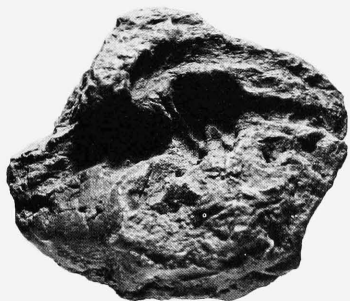
125



140



106



63b



238



88



157



179

Fig. 2:9 Different types of Ash-Tip sealings (ctd.)



Fig. 2:10 Stamp seal 1 and impression. Scale 1:1.



Fig. 2:11 Cylinder seal 2 and impression. Scale 1:1.

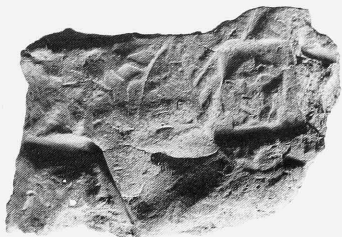


Fig. 2:12 Cylinder seal 3 and impression. Scale 1:1.

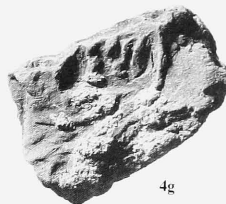




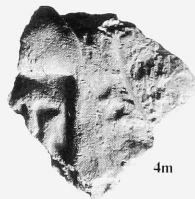
4c



4d



4g



4m

Fig. 2:13



5a-b



5a

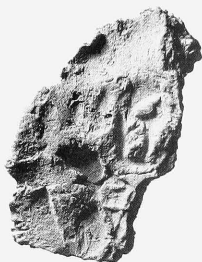


5b

Fig. 2:14

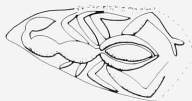


6

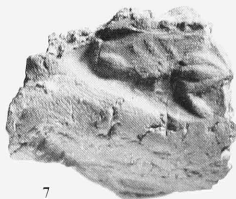


6

Fig. 2:15



7



7

Fig. 2:16

Scale 1:1



8



8

Fig. 2:17



9



9

Fig. 2:18



10

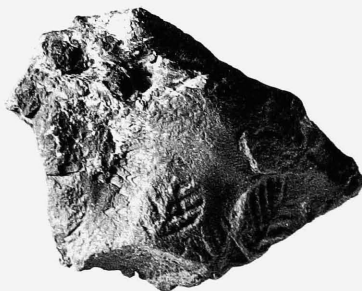


10

Fig. 2:19



11



11

Fig. 2:20



12



12

Fig. 2:21



13



13

Fig. 2:22



14



14

Fig. 2:23



15

Fig. 2:24



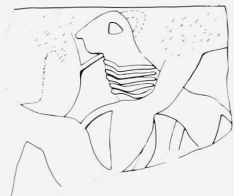
16



16

Fig. 2:25

Scale 1:1



17

Fig. 2:26



18



18

Fig. 2:27



19



19

Fig. 2:28



20

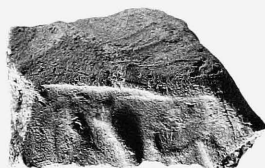


20

Fig. 2:29



21



21

Fig. 2:30



22a+b



22a

Fig. 2:31



23



23

Fig. 2:32



24



24

Fig. 2:33



25



25

Fig. 2:34



26

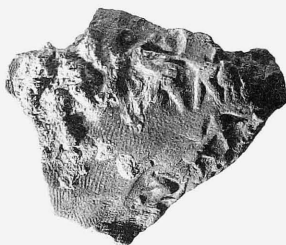


26

Fig. 2:35



27

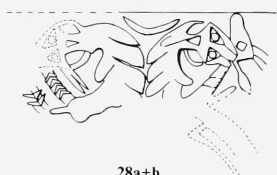


27

Fig. 2:36



28a+b



28a



28b

Fig. 2:37



29



29

Fig. 2:38



30



30

Fig. 2:39



31



31

Fig. 2:40



32 (drawing of impression)



32

Fig. 2:41

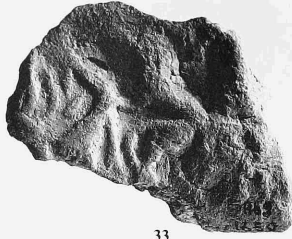


32 (possible reconstruction)

Scale 1:1

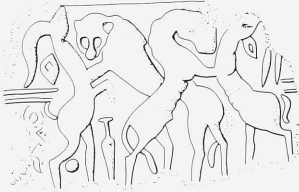


33



33

Fig. 2:42



34



34

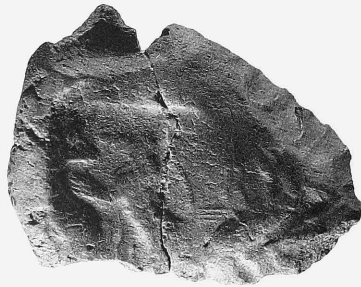
Fig. 2:43



35a+b



35a



35b

Fig. 2:44

Scale 1:1





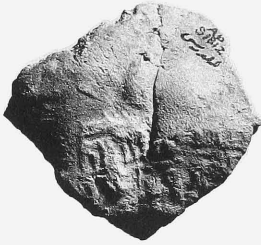
36a+b



36a



36b



36c

Fig. 2:45



37

Fig. 2:46



38

Fig. 2:47



38



39

Fig. 2:48



39



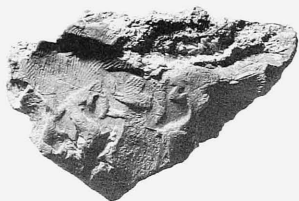
40



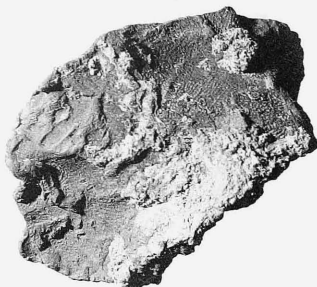
40a



40b



40c



40d



40e



40f



40g



40h



40j



40k



40l



40m



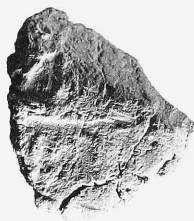
40n

Fig. 2.49

Scale 1:1



41



41

Fig. 2:50



42



42

Fig. 2:51



43

Fig. 2:52



44

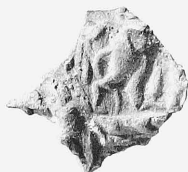


44

Fig. 2:53

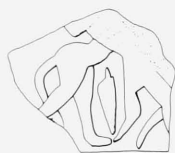


45



45

Fig. 2:54



46



46

Fig. 2:55



47a+b



47a

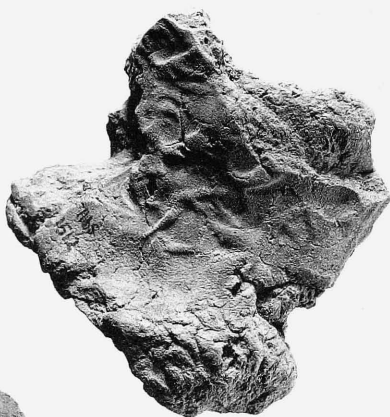


47b

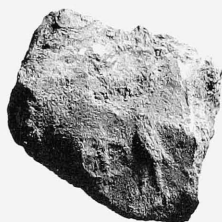
Fig. 2:56



48



48a



48b



48c



48d

Fig. 2:57

Scale 1:1



49

Fig. 2:58



49



51b

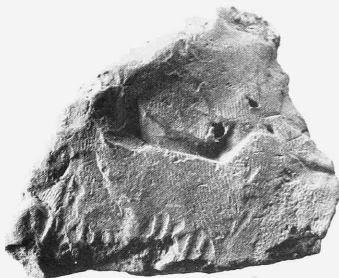


Fig. 2:59

51b



52

Fig. 2:60



53

Fig. 2:61

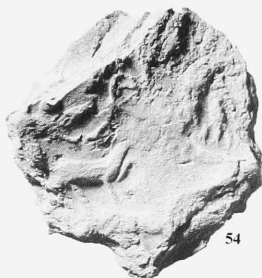


53



54

Fig. 2:62



54



55

Fig. 2:63



55



56

Fig. 2:64

Scale 1:1



57



57

Fig. 2:65



58



58



Fig. 2:66



59

Fig. 2:67



60



60

Fig. 2:68



61



61

Fig. 2:69

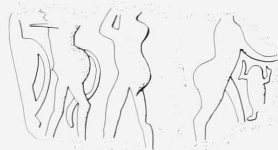


62



62

Fig. 2:70



63a+b



63a



63b

Fig. 2:71



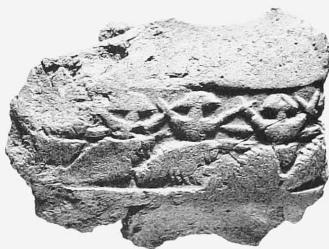
64a+b



64a (AbS 1661)



64a (AbS 1662)



64b

Fig. 2:72



65



65

Fig. 2:73



66



66

Fig. 2:74



67



67

Fig. 2:75



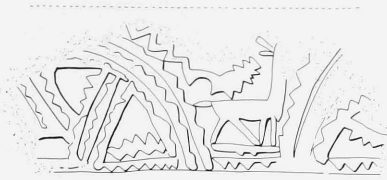
68



68

Fig. 2:76





69a-k



69f



69g

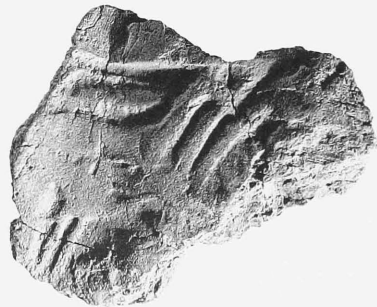


69h

Fig. 2:77

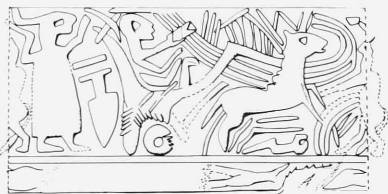


70



70

Fig. 2:78



71

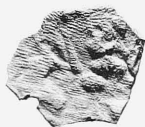


71

Fig. 2:79



72



72

Fig. 2:80



73



73

Fig. 2:81

Scale 1:1



74

Fig. 2:82



74

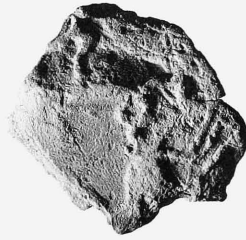


75

Fig. 2:83



76a+b

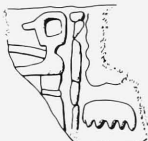


76a



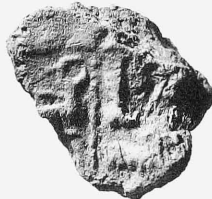
76b

Fig. 2:84



77

Fig. 2:85



77



78

Fig. 2:86



78



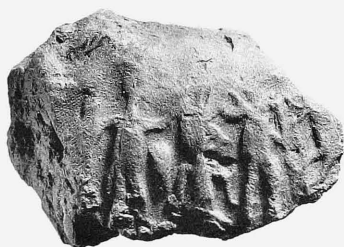
79a-c



79b



79c



79d



79e

Fig. 2:87



80



80



80

Fig. 2:88

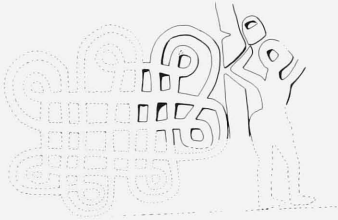


81



81

Fig. 2:89



82a+b



82a



82b

Fig. 2:90



83



83

Fig. 2:91



84



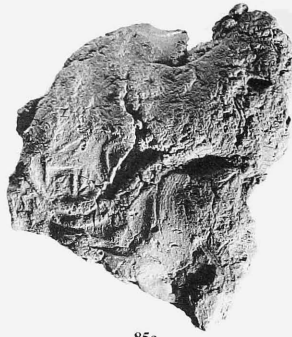
84

Fig. 2:92

Scale 1:1

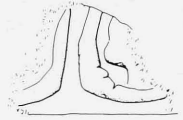


85a+b



85a

Fig. 2:93



86

Fig. 2:94

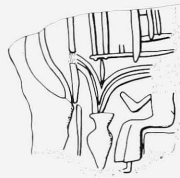


87



87

Fig. 2:95



88



88

Fig. 2:96



89

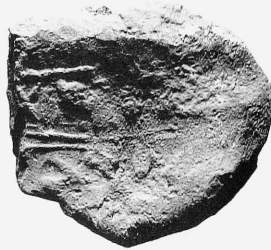


89

Fig. 2:97



90



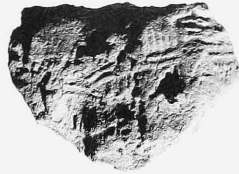
90

Fig. 2:98



91

Fig. 2:99



91



92a+b



92a



92b

Fig. 2:100



93

Fig. 2:101



93



94

Fig. 2:102



94



95

Fig. 2:103



95



96

Fig. 2:104

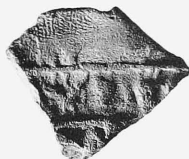


96



97

Fig. 2:105



97

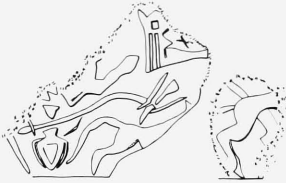


98



98

Fig. 2:106



99



99

Fig. 2:107



100



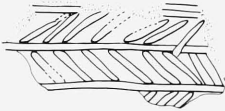
100

Fig. 2:108



101

Fig. 2:109



102a-c



102a



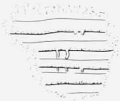
102b



102c

Fig. 2:110





103



103

Fig. 2:111

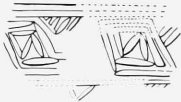


104



104

Fig. 2:112

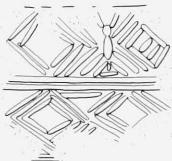


105



105

Fig. 2:113



106



106

Fig. 2:114



107



107

Fig. 2:115



108



108

Fig. 2:116



109

Fig. 2:117

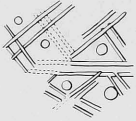


110

Fig. 2:118



110

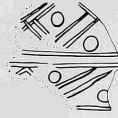


111

Fig. 2:119



111

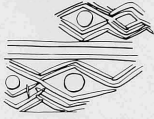


112

Fig. 2:120

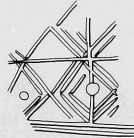


112



113

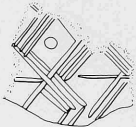
Fig. 2:121



114a



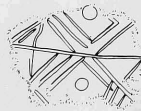
114a



114b



114b

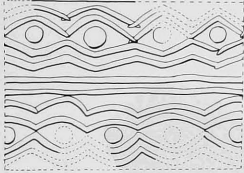


114c



114c

Fig. 2:122



115



115



115

Fig. 2:123



116



116

Fig. 2:124

Scale 1:1



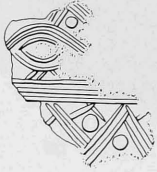
117a+b



117a



117b



117c+d

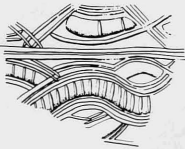


117c



117d

Fig. 2:125



118a-c



118a



118b



118c

Fig. 2:126



119



119

Fig. 2:127

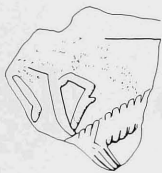


120



120

Fig. 2:128

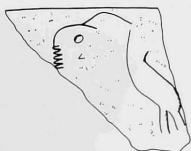


121



121

Fig. 2:129



122



122

Fig. 2:130



123



123

Fig. 2:131



124



124

Fig. 2:132



125



125

Fig. 2:133



126



126

Fig. 2:134

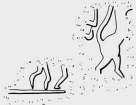


127



127

Fig. 2:135



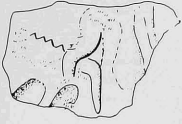
128



128

Fig. 2:136

Scale 1:1



129

Fig. 2:137



129



130

Fig. 2:138



130



131

Fig. 2:139



131



132

Fig. 2:140



132



133

Fig. 2:141



135

Fig. 2:142



135



136

Fig. 2:143



137

Fig. 2:144



137



138

Fig. 2:145



140



140

Fig. 2:146



141

Fig. 2:147

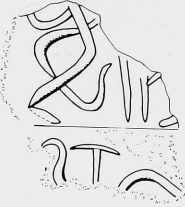


142

Fig. 2:148



142



143

Fig. 2:149



143



144

Fig. 2:150



144



145

Fig. 2:151



145





146



146

Fig. 2:152



147



147

Fig. 2:153

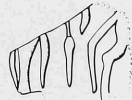


148



148

Fig. 2:154



149



149

Fig. 2:155



150



150

Fig. 2:156



151



151

Fig. 2:157



152

Fig. 2:158



152



153

Fig. 2:159



153



154

Fig. 2:160



154



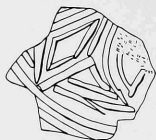
155

Fig. 2:161



156

Fig. 2:162



157 Reverse



157 Reverse

Fig. 2:163



157



159

Fig. 2:165



159



158

Fig. 2:164



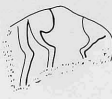
160

Fig. 2:166



161

Fig. 2:167



162

Fig. 2:168



163

Fig. 2:169



164

Fig. 2:170



164



165

Fig. 2:171



166

Fig. 2:172



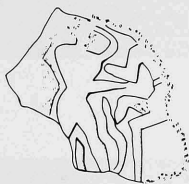
167

Fig. 2:173



168

Fig. 2:174



169

Fig. 2:175



170

Fig. 2:176



170



171

Fig. 2:177



172

Fig. 2:178



172



173

Fig. 2:179



174

Fig. 2:180



175

Fig. 2:181

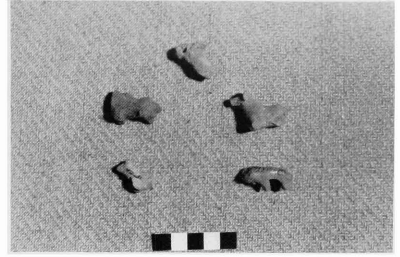


224

Fig. 2:182



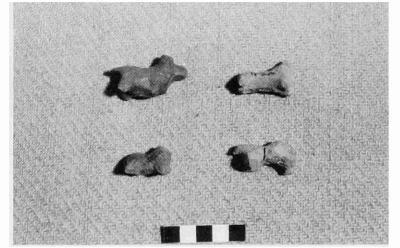
a.



b.



c.



d.



e.



f.

Fig. 3:1 Groups of animal figurines:

a. top row (l. to r.): 358 - 325; bottom row: 328 - 330.

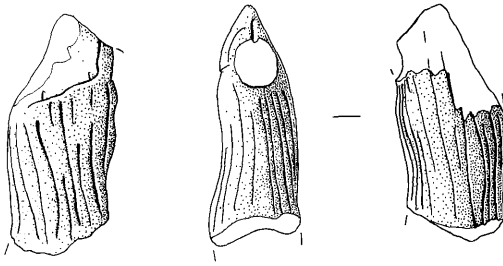
b. top row: 348; middle row: 324 - 338; bottom row: 336 - 335.

c. top row: 321 - 327; bottom row: 359 - 349.

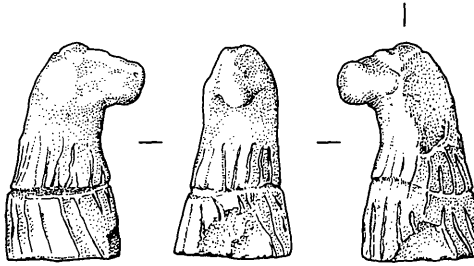
d. top row: 344 - 354; bottom row: 357 - 356.

e. top row: 326 - 353 - 352; bottom row: 301(!) - 329 - 351.

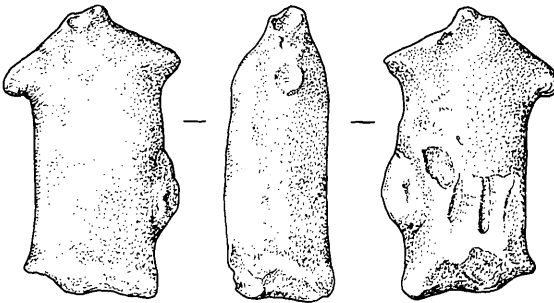
f. top row: 364 - 369; bottom row: 363 - 370 - 371.



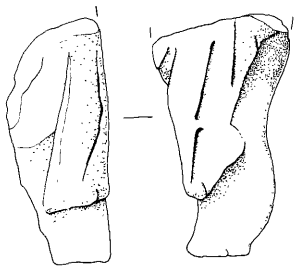
262



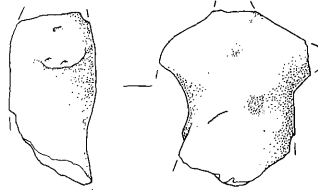
263



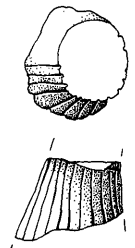
264



265

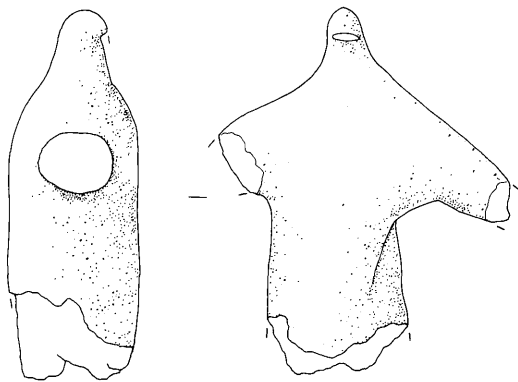


266

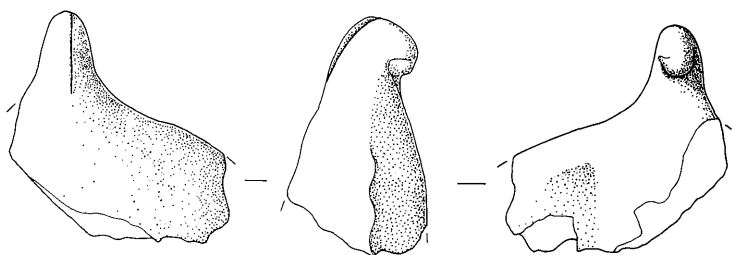


267

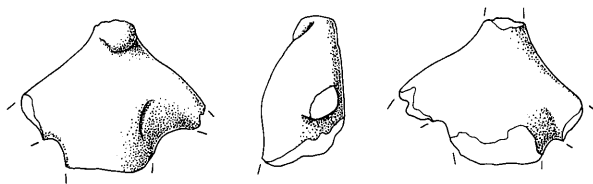
Fig. 3.2 Human figurines 262-267. Scale 1:1.



270

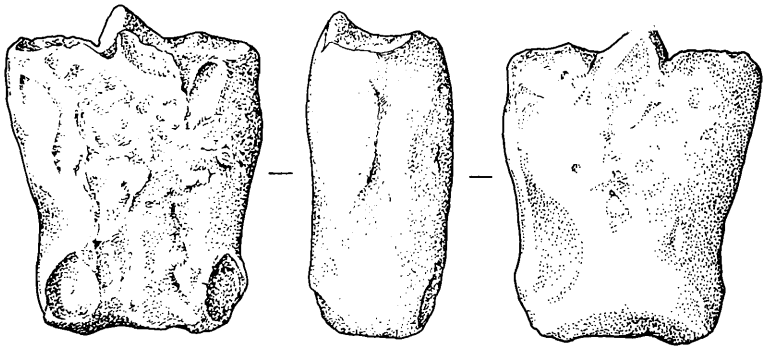


271

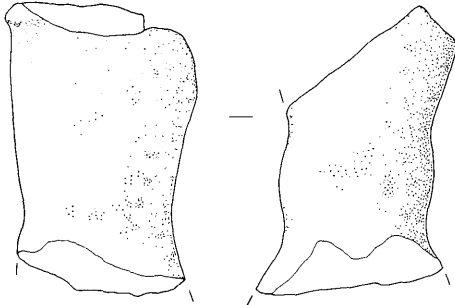


272

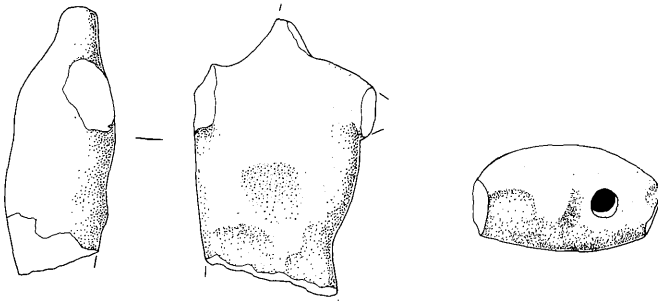
Fig. 3:3 Human figurines 270-272. Scale 1:1.



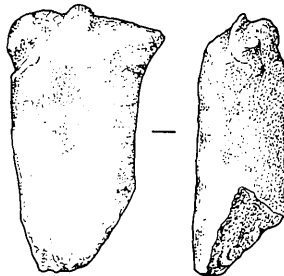
273



274



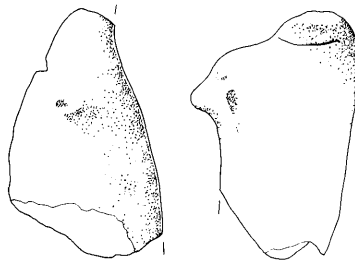
275



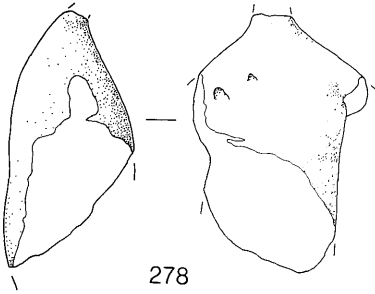
276

Fig. 34 Human figurines 273-276. Scale 1:1.

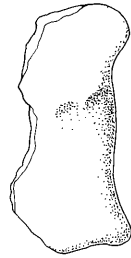




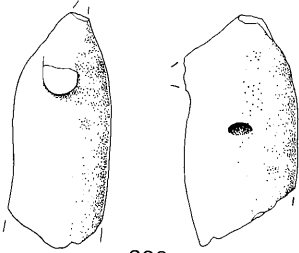
277



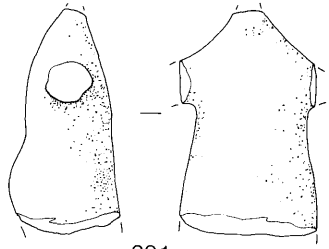
278



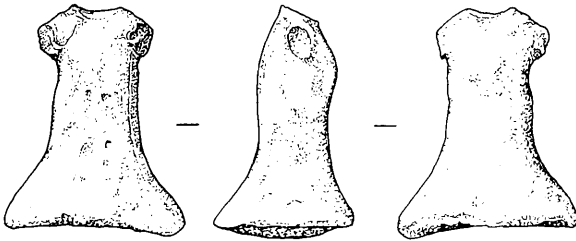
279



280



281



282

Fig. 3:5 Human figurines 277-282. Scale 1:1.

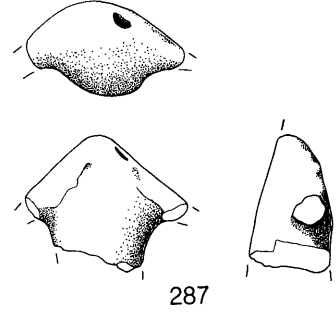
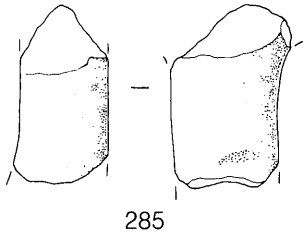
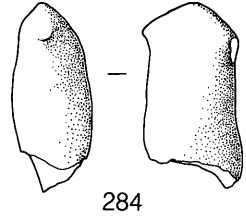
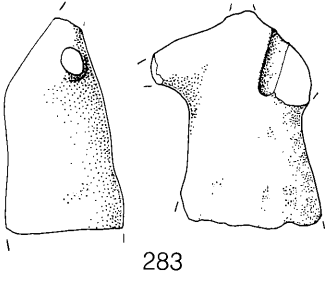
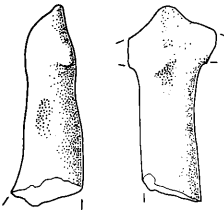
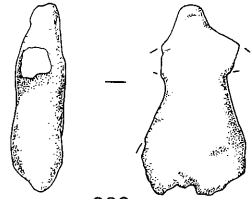


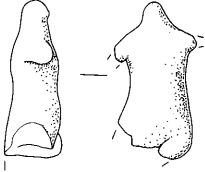
Fig. 3:6 Human figurines 283-285, 287. Scale 1:1.



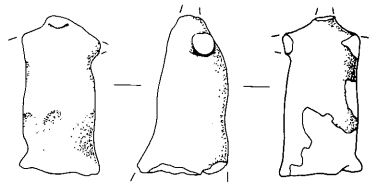
288



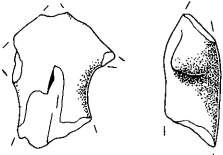
289



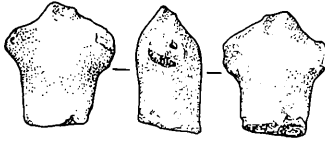
290



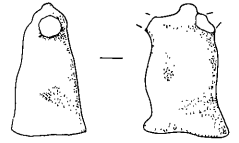
291



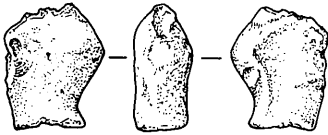
292



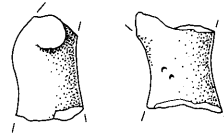
293



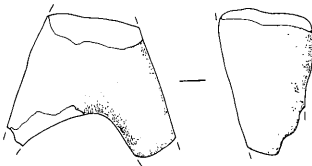
294



295



296



297

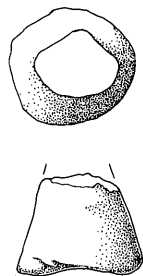
Fig. 3:7 Human figurines 288-297. Scale 1:1.



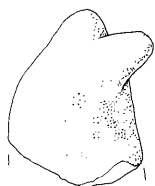
298



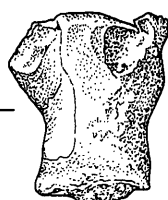
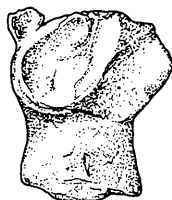
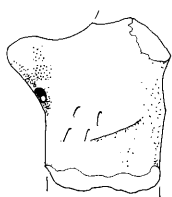
299



300

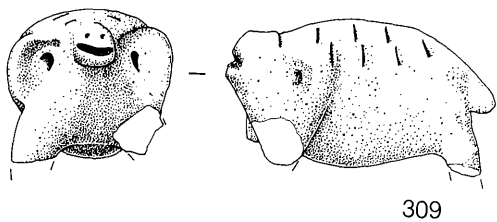


301

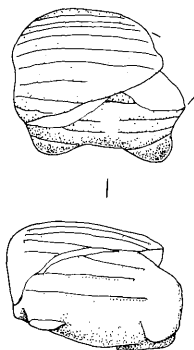
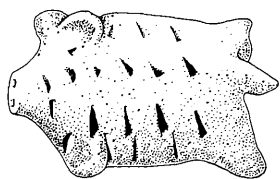


306

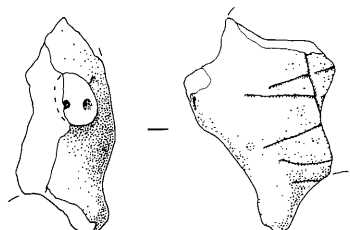
Fig. 3:8 Human figurines 298-301, 306. Scale 1:1.



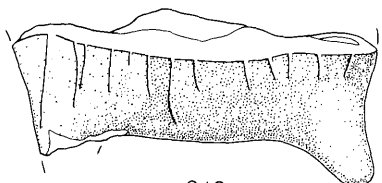
309



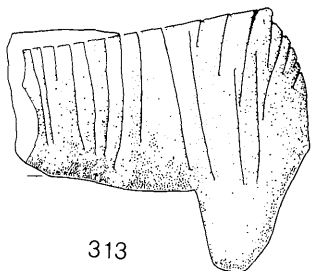
310



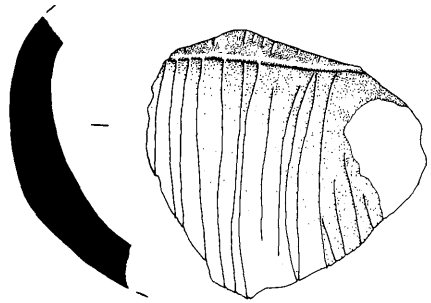
311



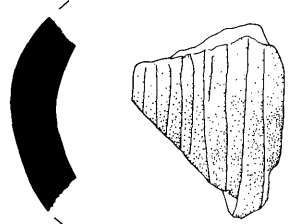
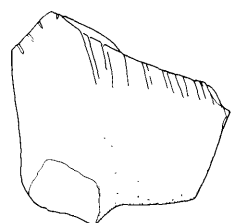
312



313



314



315



317a

Fig. 3:9 Figurines of pigs 309-315, 317a. Scale 1:1.

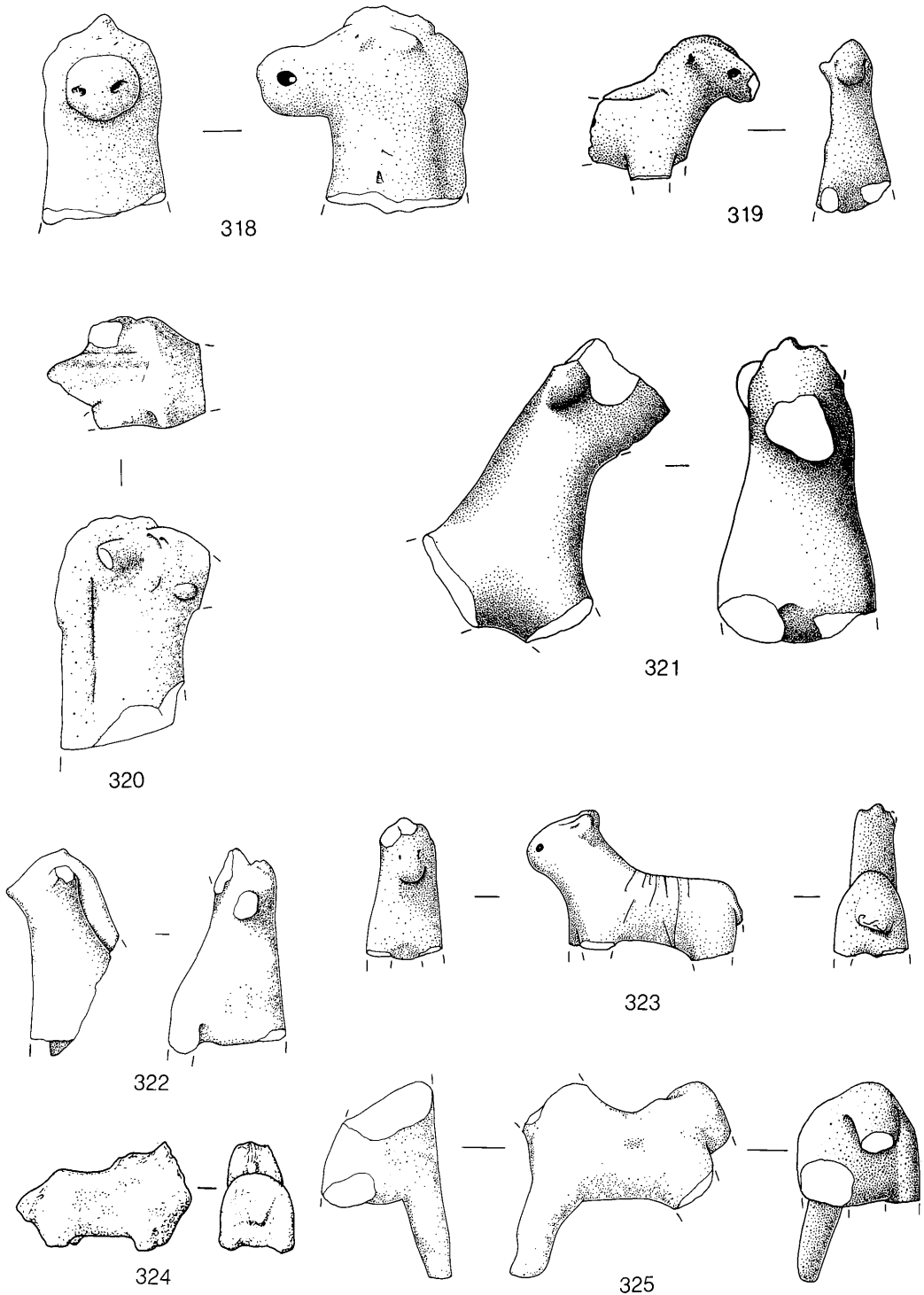
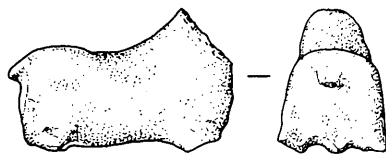
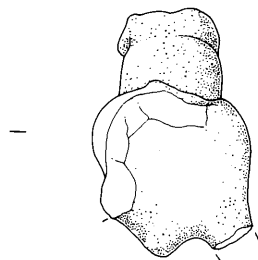
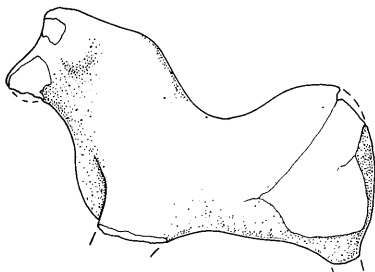
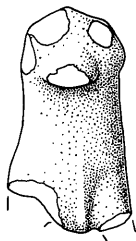


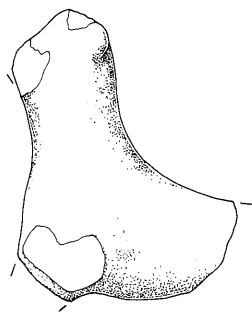
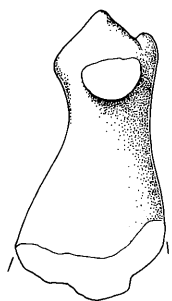
Fig. 3:10 Figurines of equids 318-325. Scale 1:1.



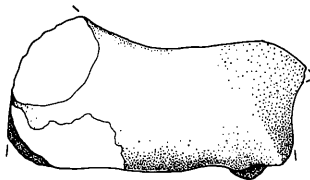
326



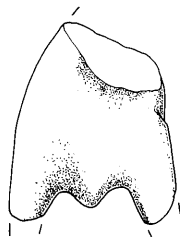
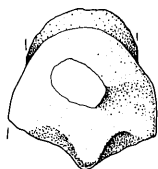
327



328



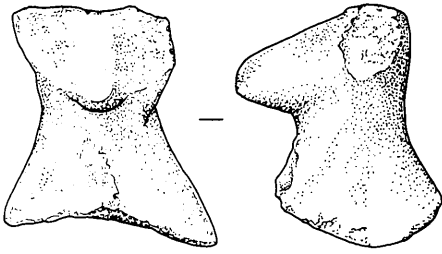
329



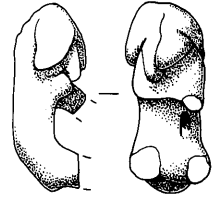
330



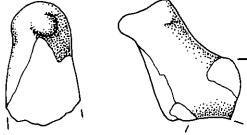
Fig. 3:11 Figurines of equids 326-330. Scale 1:1.



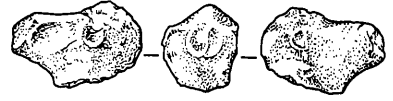
334



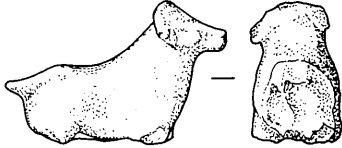
335



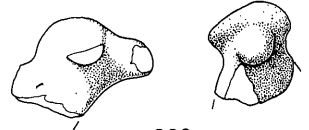
336



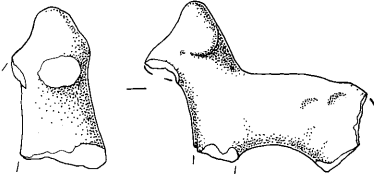
337



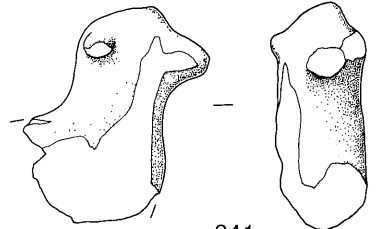
338



339



340



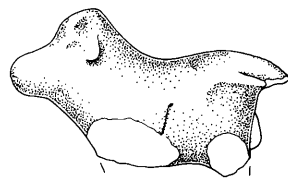
341



342



343



344

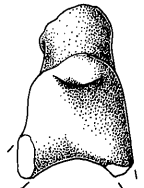
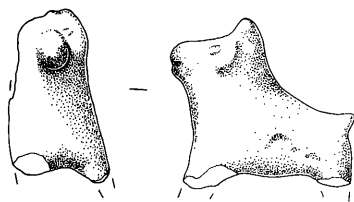
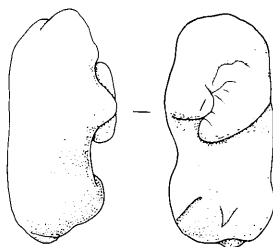


Fig. 3:12 Figurines of sheep and goat 334-344. Scale 1:1.

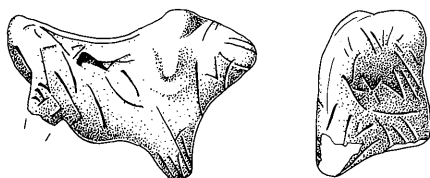




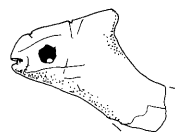
345



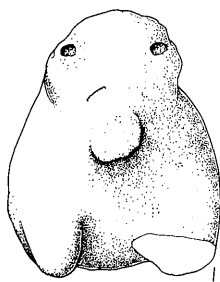
346



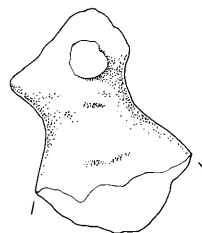
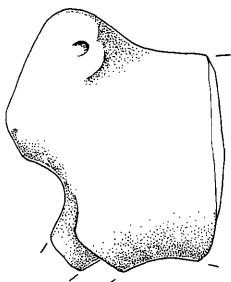
347



348

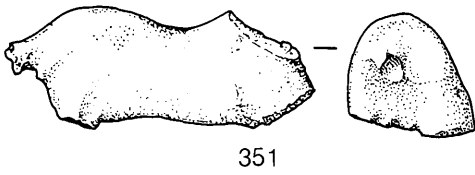


349

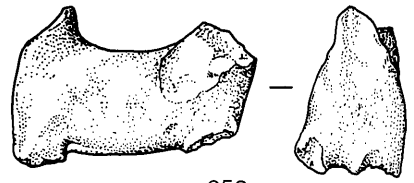


350

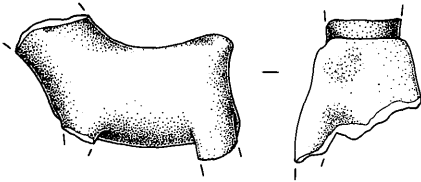
Fig. 3:13 Semi-complete figurines of unidentified animals 345-350. Scale 1:1.



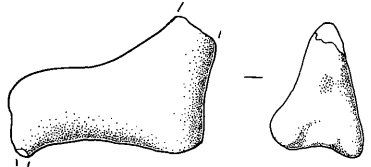
351



352



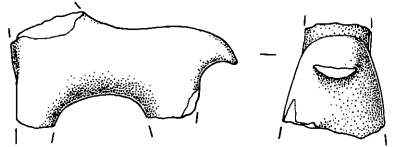
353



354



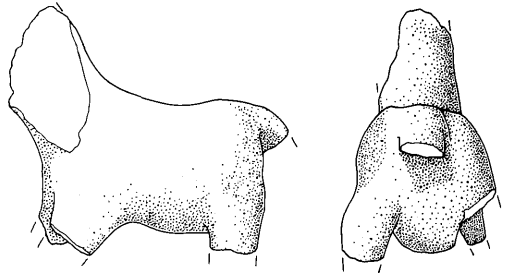
355



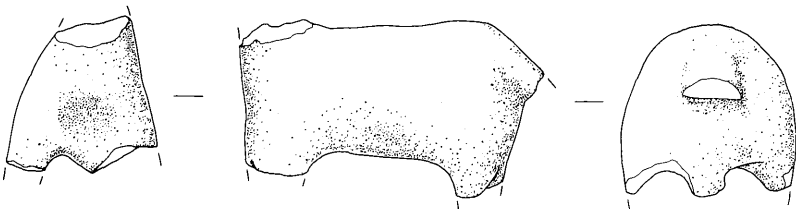
356



357



358

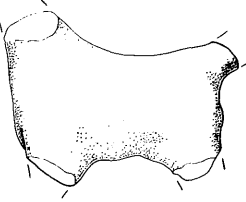


359

Fig. 3:14 Headless bodies of figurines of unidentified animals 351-359. Scale 1:1.



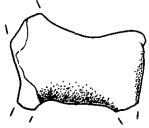
363



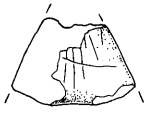
360



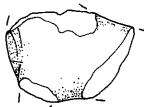
364



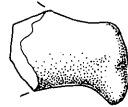
365



367



369



370



371



372



Fig. 3:15 Headless bodies of figurines of unidentified animals 360, 363-365, 367, 369, 370-372. Scale 1:1.

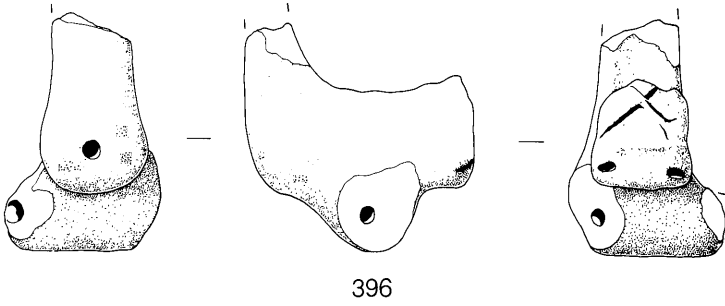
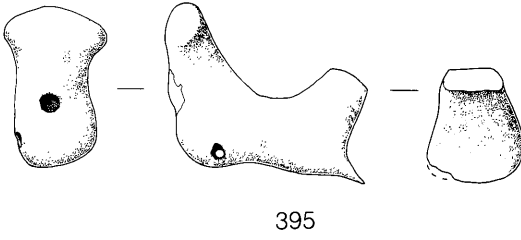
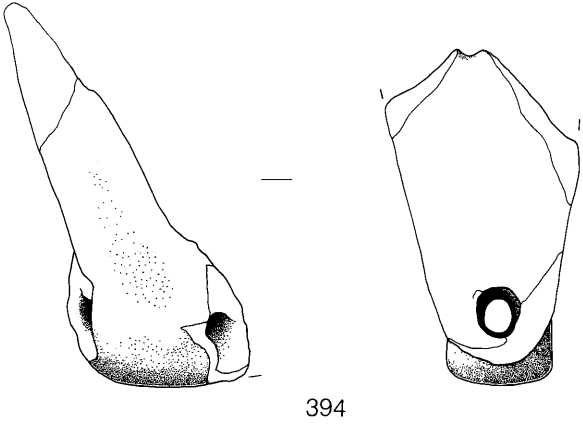
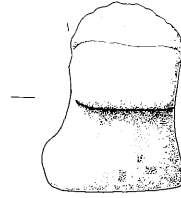
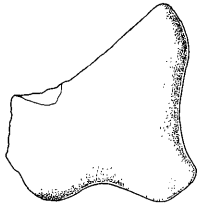
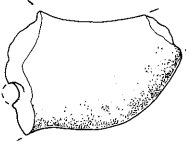


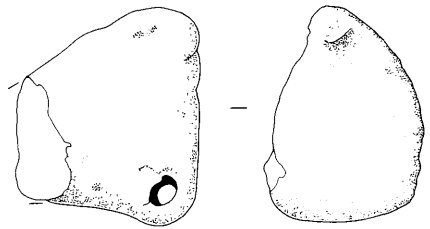
Fig. 3:16 Model chariot body fragments: 394-396. Scale 1:1.



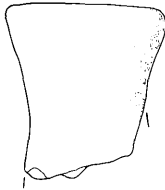
397



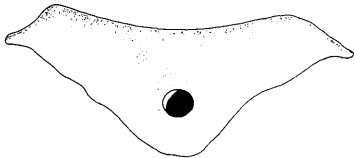
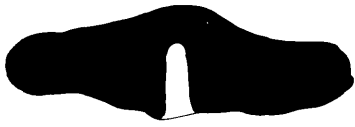
398



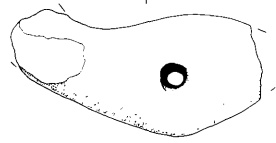
400



399

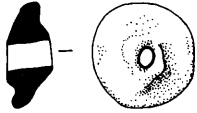


402

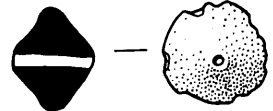


403

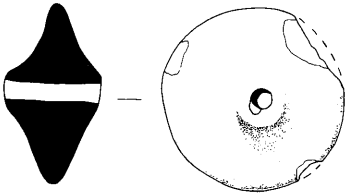
Fig. 3:17 Model chariot body fragments: 397-400; yokes from model chariots: 402, 403. Scale 1:1.



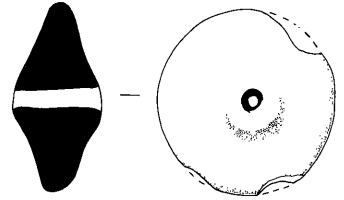
406



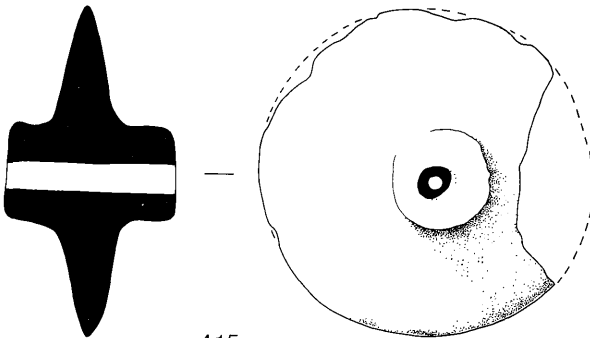
407



408

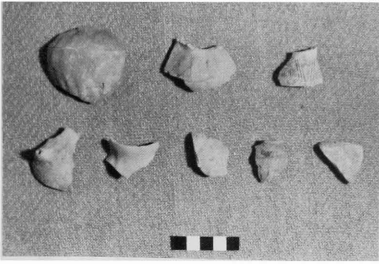


412



415

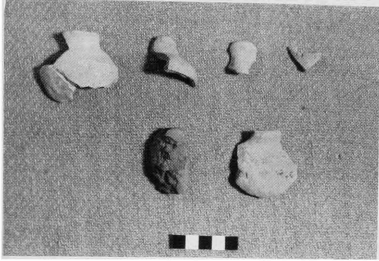
Fig. 3:18 Wheels from model chariots 406-408, 412, 415. Scale 1:1.



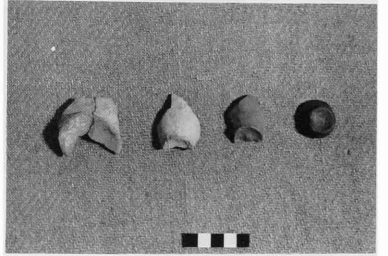
a.



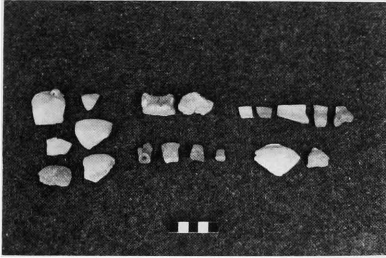
b.



c.



d.



e.



f.

Fig. 4:1 Groups of miniature vessels:  
 a. top row (l. to r.): 474 (6G76:689) - 474 (6G76:670) - 6G45:154  
 bottom row: 532 - 492 - 464 - 6G36:478 - 519.

b. Group from 6G86  
 top row: 498 - 516  
 middle row: 513 - unident. - 483  
 bottom row: 439(?) - 475 - 445.

c. top row: 476 - 481 - 502 - 496  
 bottom row: 459 - 496.

d. 510 - 508 - 507 - 514.

e. Left: bowl sherds; Top centre: coarse flat-based bowls; Centre bottom: spout and 3 handles; Top right: jar rims; Bottom right: "cooking pot" and (far right) type uncertain.

f. top row: 680 - 436  
 bottom row: 440 (base) - 435 - 448.

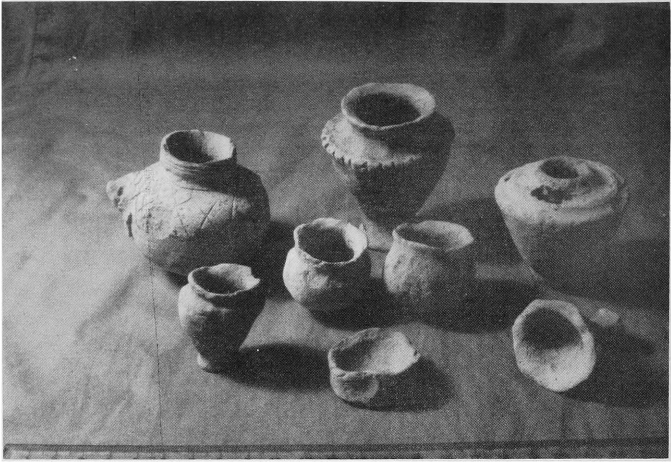


Fig. 4:2 Group of miniature vessels from Ur. (Photo: J.A. Moon; courtesy Trustees of the British Museum).



Fig. 4:3 Group of miniature vessels from Al-Hiba (after Hansen 1973, Fig 18; courtesy Prof. D.P. Hansen).



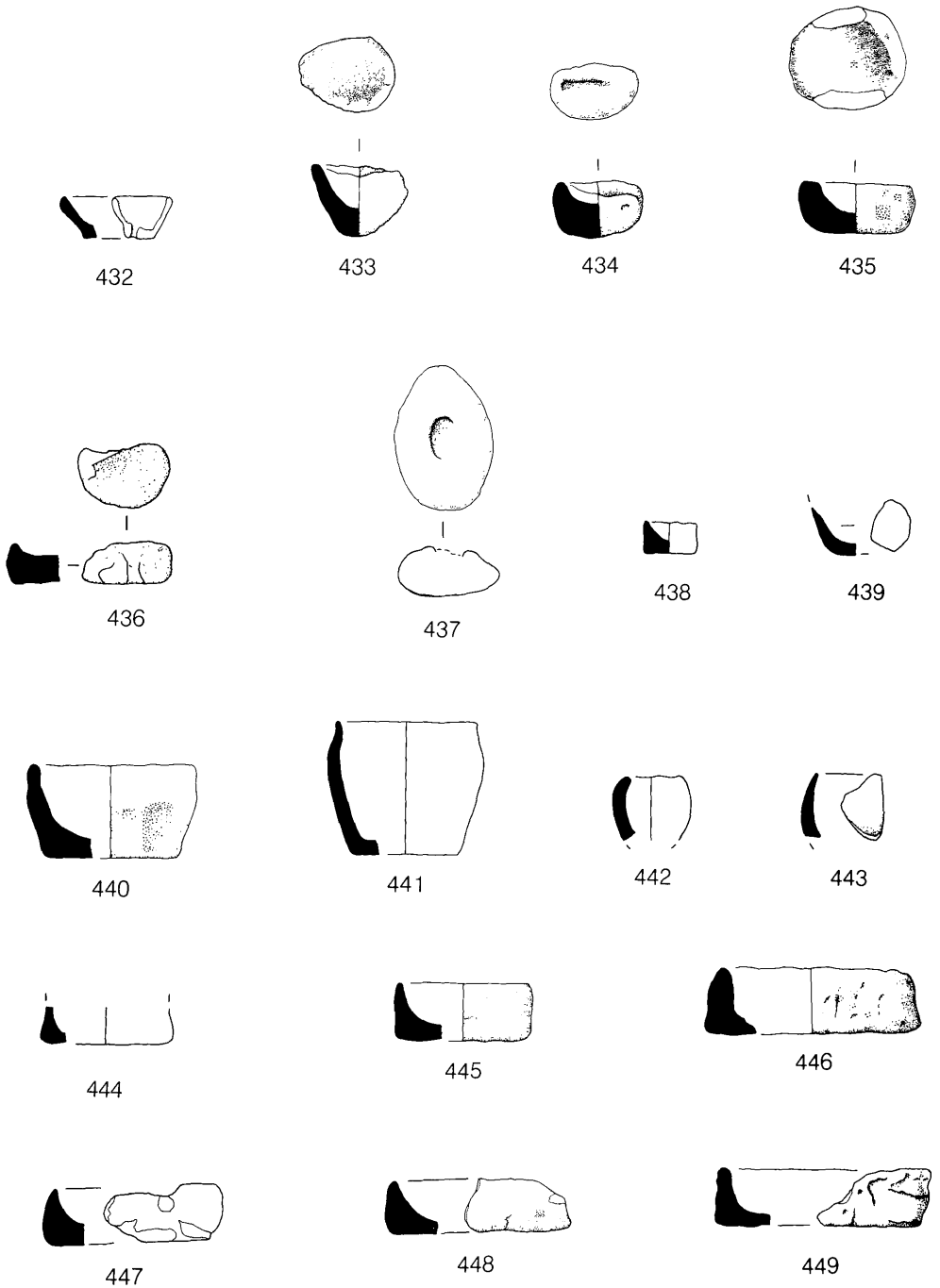


Fig. 4.4 Miniature vessels 432-449. Scale 1:2.



450



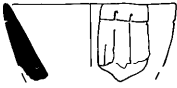
451



452



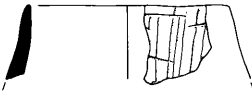
453



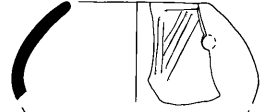
454



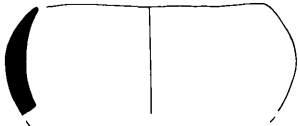
455



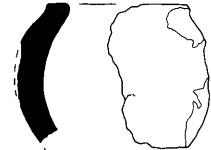
456



457



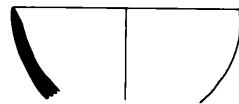
458



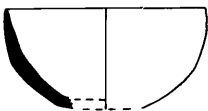
459



460



461



462



463

Fig. 4:5 Miniature vessels 450-463. Scale 1:2.

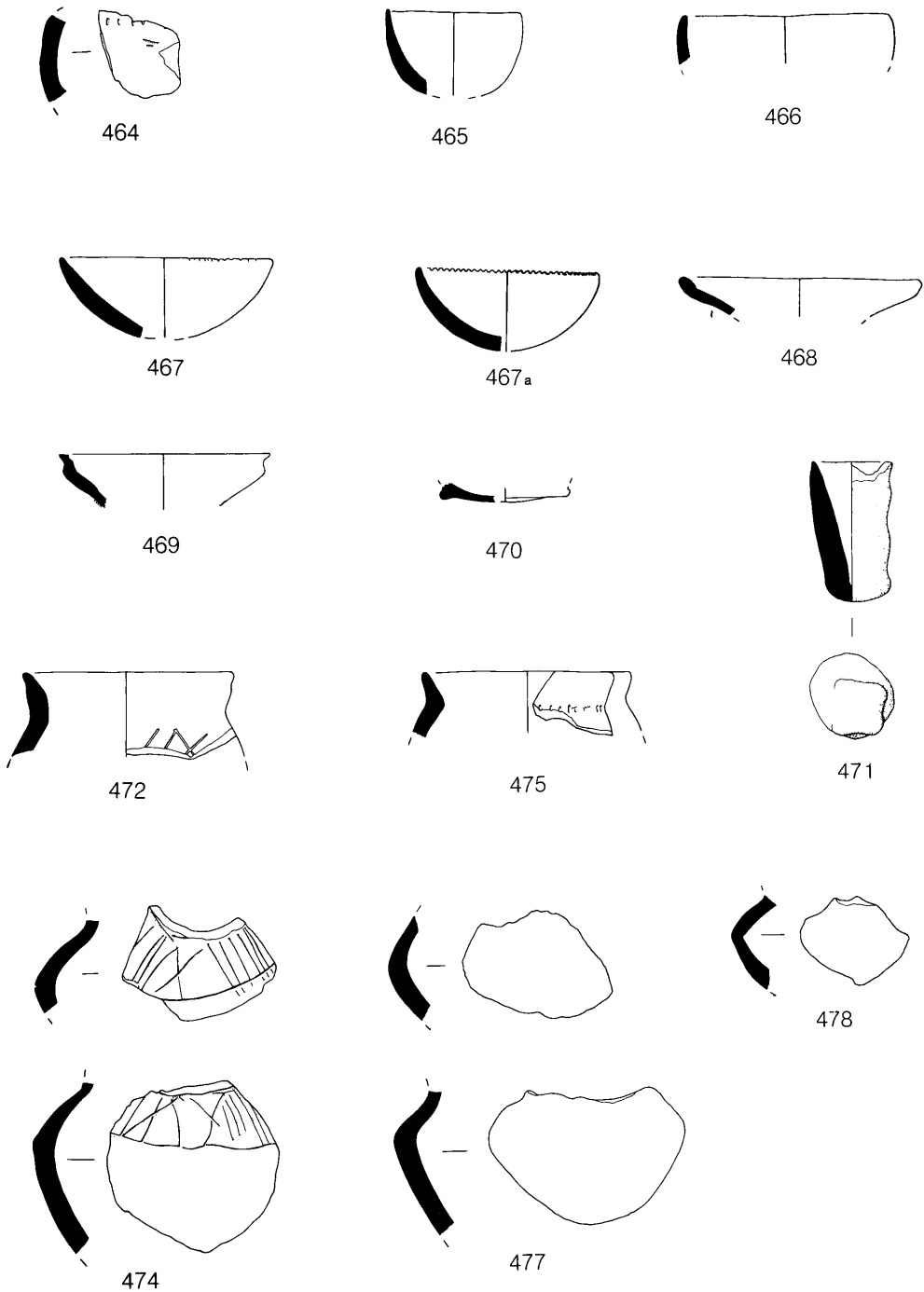
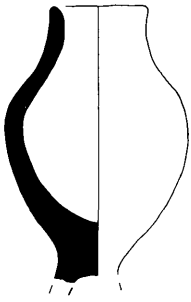


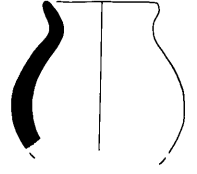
Fig. 4:6 Miniature vessels 464-472, 474-475, 477-478. Scale 1:2.



473



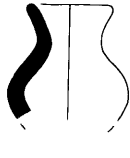
476



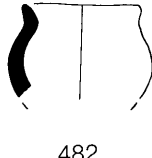
479



480



481



482



483



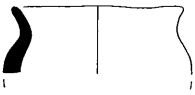
484



485



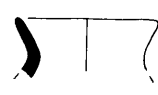
486



487



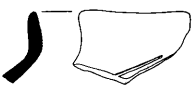
488



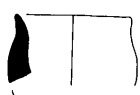
489



490



492

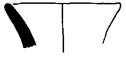


493



494

Fig. 4:7 Miniature vessels 473, 476, 479-490, 492-494. Scale 1:2.



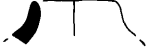
491



504



495



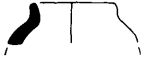
496



497



498



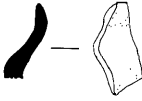
499



500



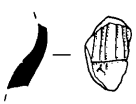
501



502



503



516



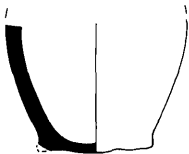
517



518



519



505

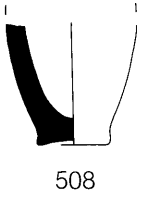


506



507

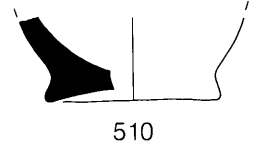
Fig. 4:8 Miniature vessels 491, 495-507, 516-519. Scale 1:2.



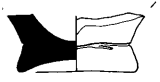
508



509



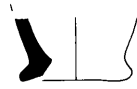
510



511



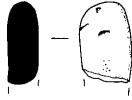
512



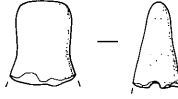
513



514



521



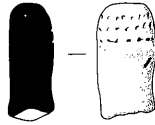
522



523



524



525



526



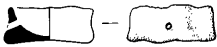
527



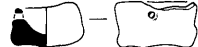
528



529



530



531

Fig. 4:9 Miniature vessels 508-514, 521-531. Scale 1:2.

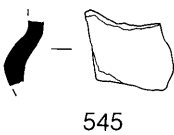
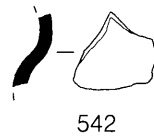
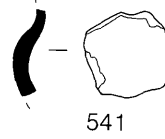
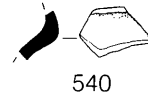
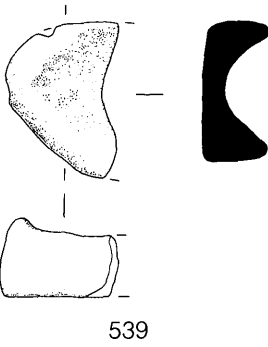
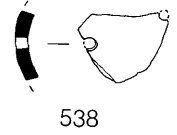
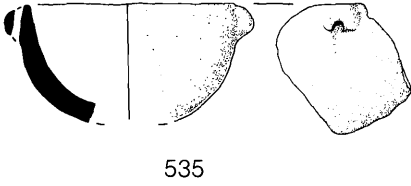
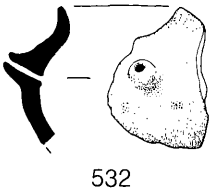


Fig. 4:10 Miniature vessels 532-542, 544-546. Scale 1:2.

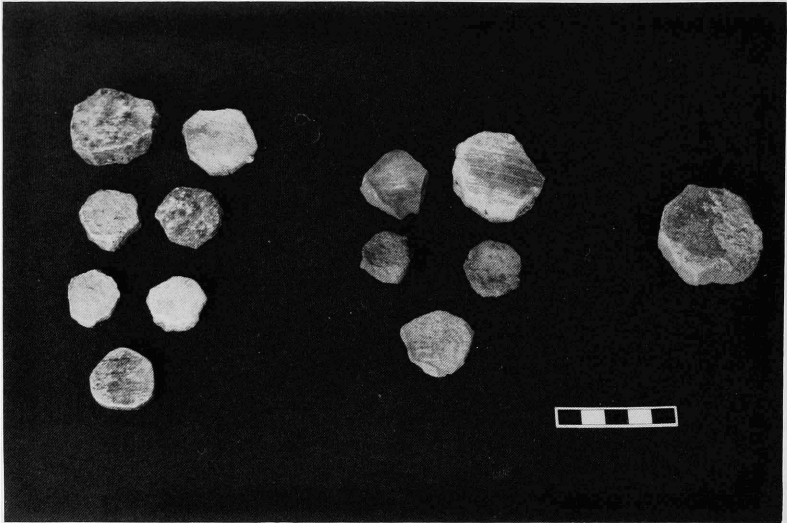


Fig. 5:1 Groups of pot discs. (5 cm. scale)

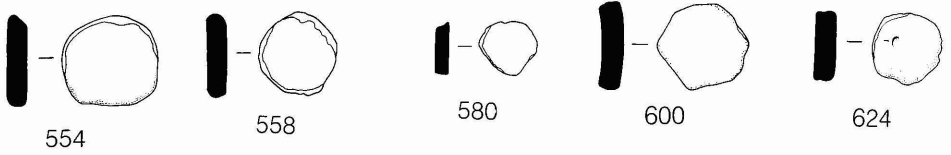
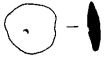
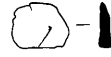


Fig. 5:2 Examples of pot discs. Scale 1:2

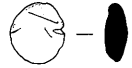




649



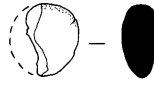
650



651



652



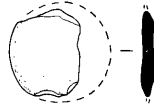
653



654



655



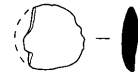
656



657



658



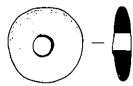
659



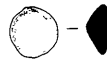
660



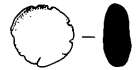
662



664



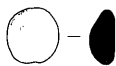
665



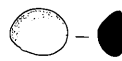
666



667



668



669



670

Fig. 6:1 Examples of clay 'tokens': 649-658, 660, 662, 664-670. Scale 1:2.



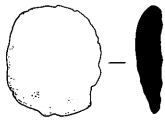
671



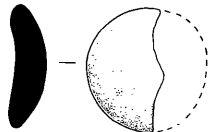
672



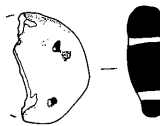
673



675



676



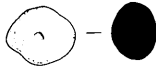
678



679



680



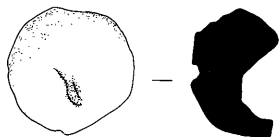
681



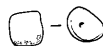
700



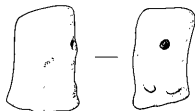
682



683



684



689



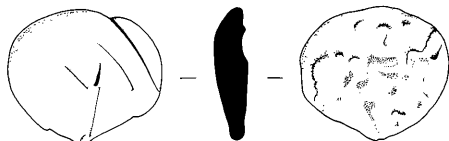
690



694



695



696

Fig. 6.2 Examples of clay 'tokens': 671-673, 675-676, 678-684, 689-690, 694-696, 700. Scale 1:2.

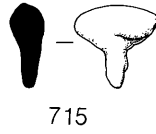
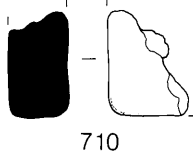
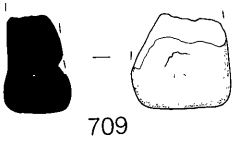
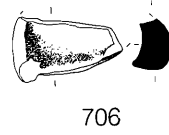
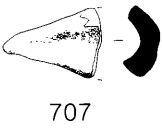
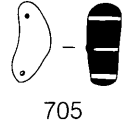
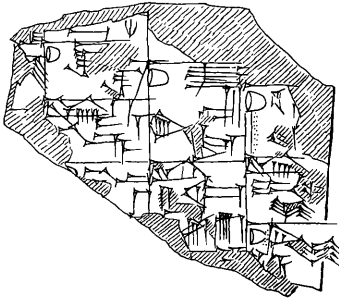


Fig. 6:3 Examples of clay 'tokens': 698-699, 703-707, 709-710, 712, 714-715, 717. Scale 1:2.

Obv.



Rev.

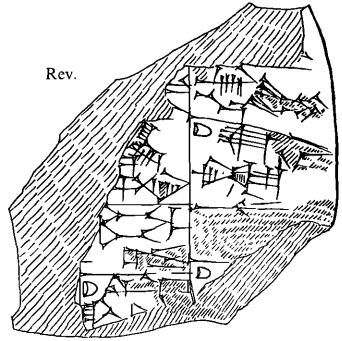
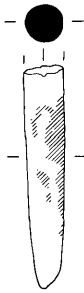


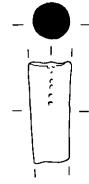
Fig. 7:1 Cuneiform tablet 722. Scale 1:1.



726



735



736

Fig. 8:1 Examples of clay cones: 726, 735 and 736 (the stippling on this item indicates unburnt areas). Scale 1:2.

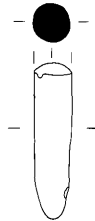


Fig. 8:2 Clay cone 6G86:266. Scale 1:2

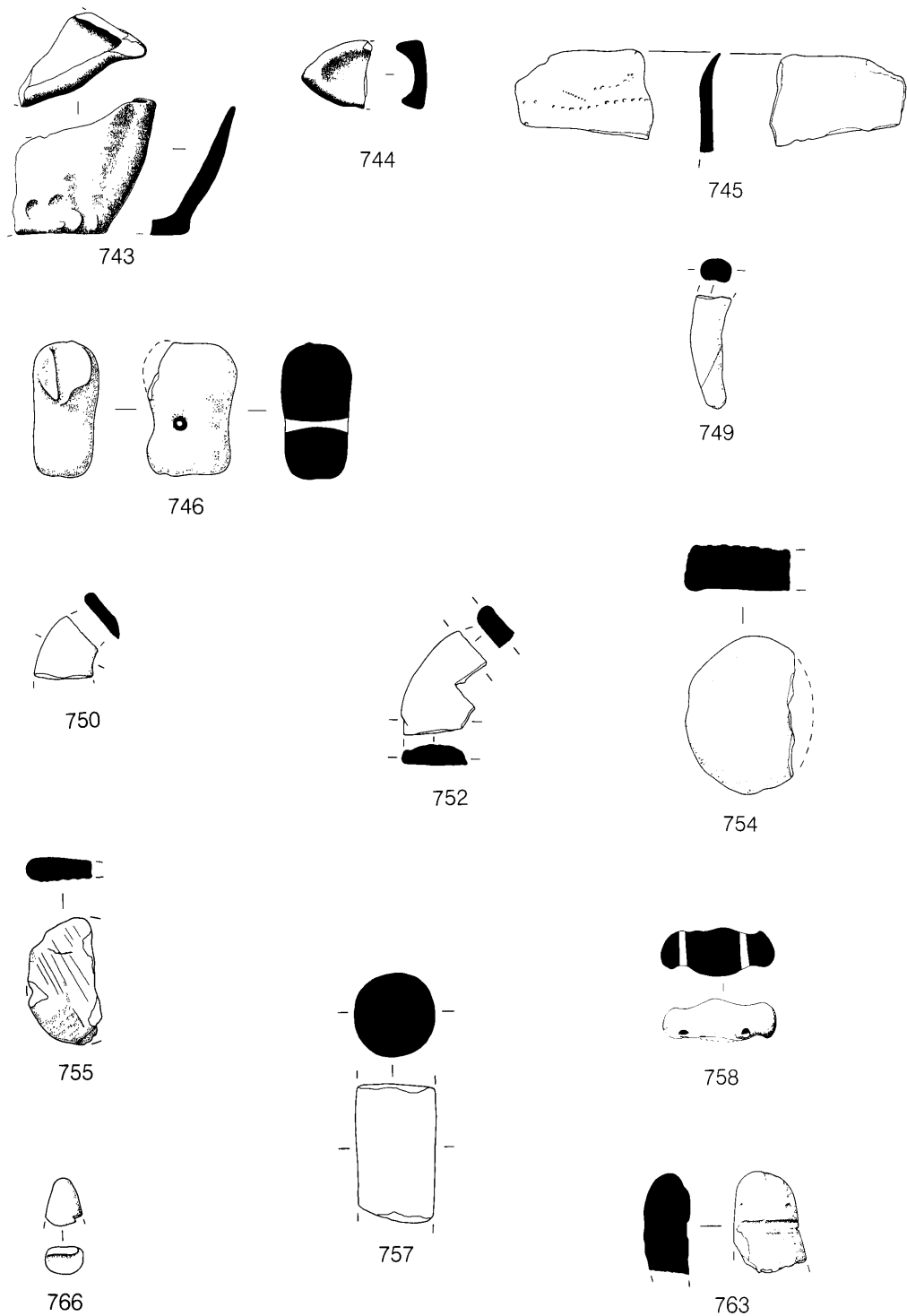


Fig. 9:1 Miscellaneous clay objects: 743-6, 749-750, 752, 754, 755, 757, 758, 763, 766. Scale 1:2.



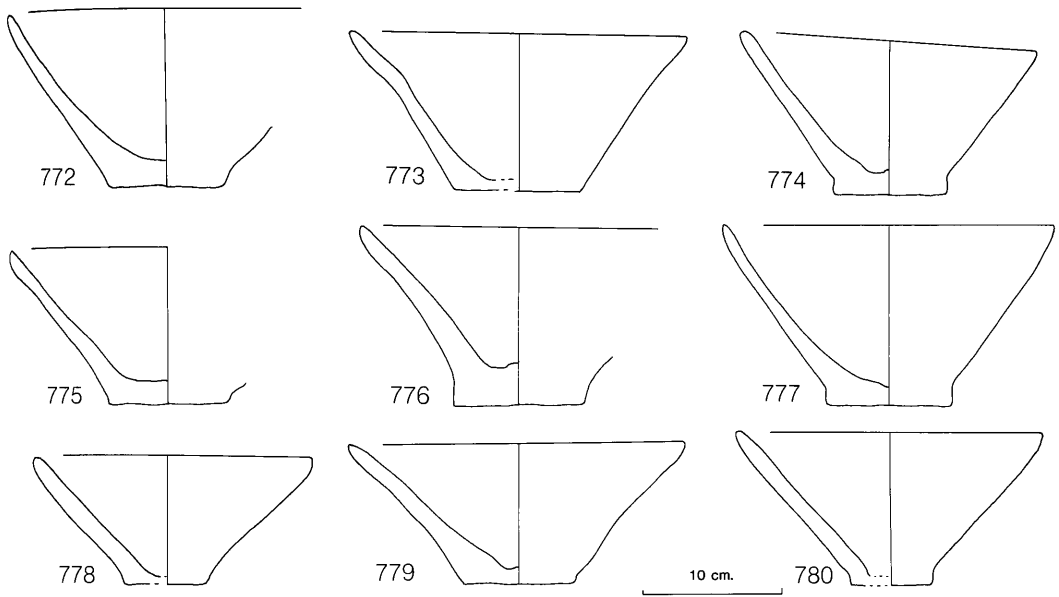


Fig. 10:1 Conical bowls: 772-780. Scale 1:4.

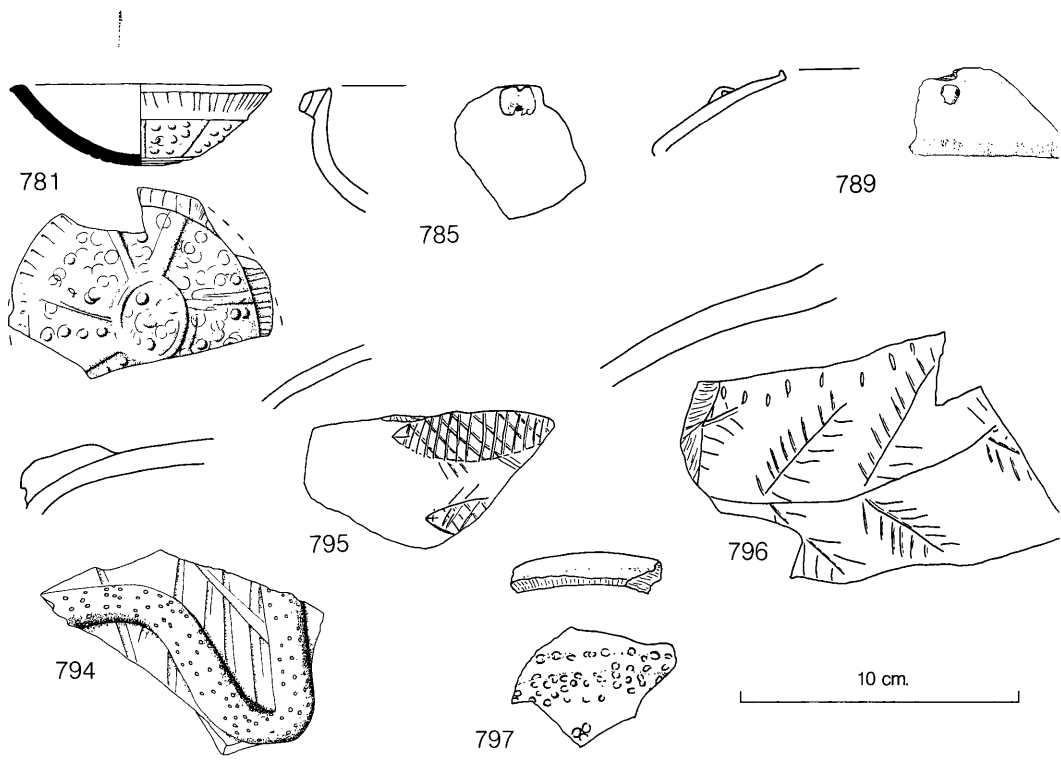


Fig. 10:2 Miscellaneous forms: 781, 785, 789, 794-797. Scale 1:2.

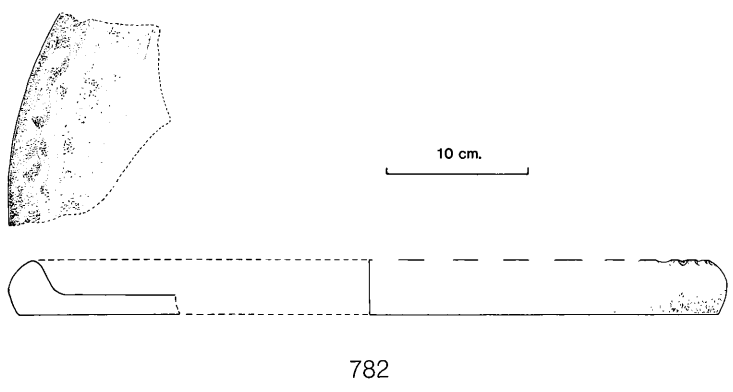


Fig. 10:3 Coarse plate: 782. Scale 1:4.



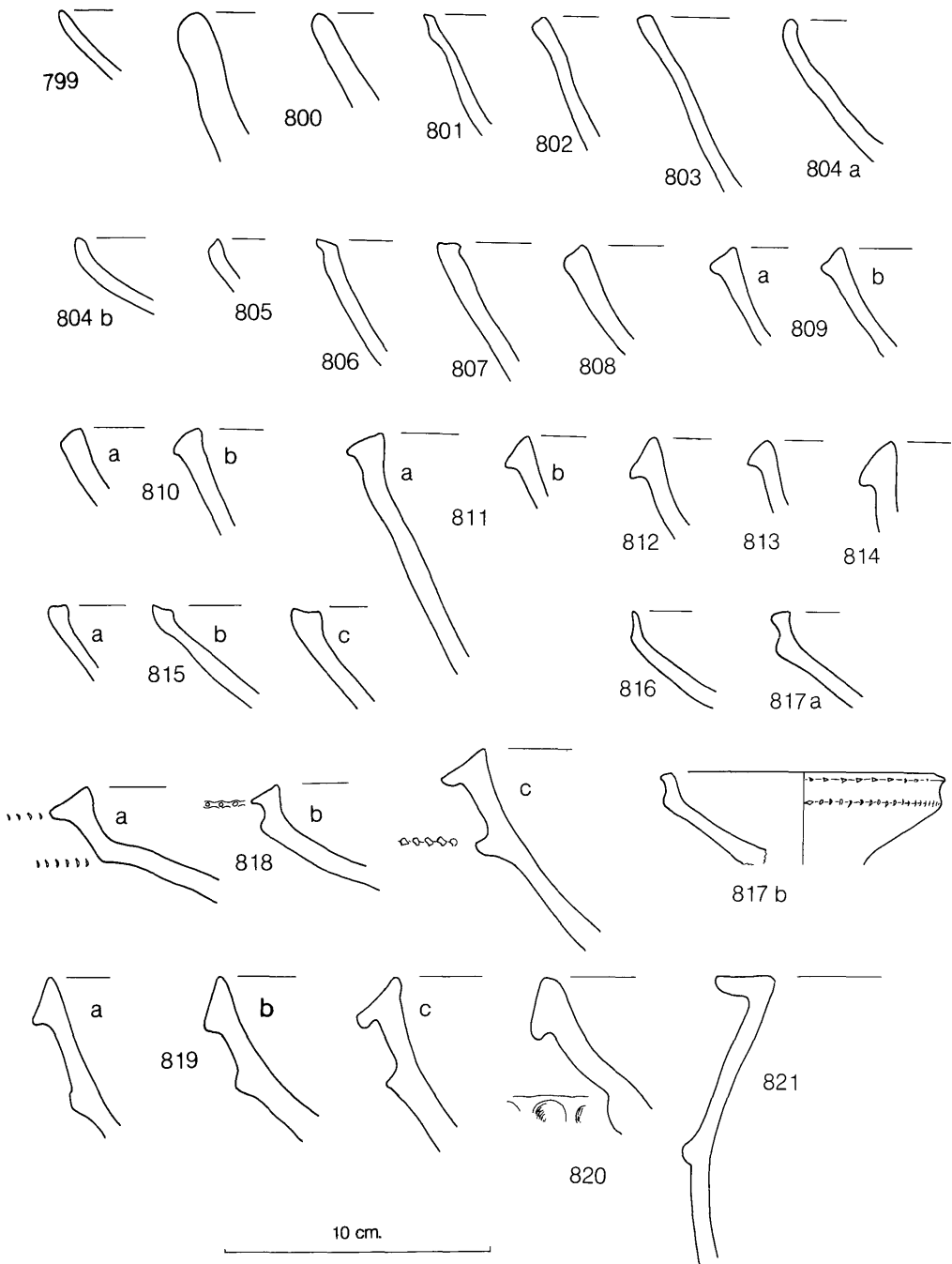


Fig. 10:4 Bowl rims: 799-821. Scale 1:2.

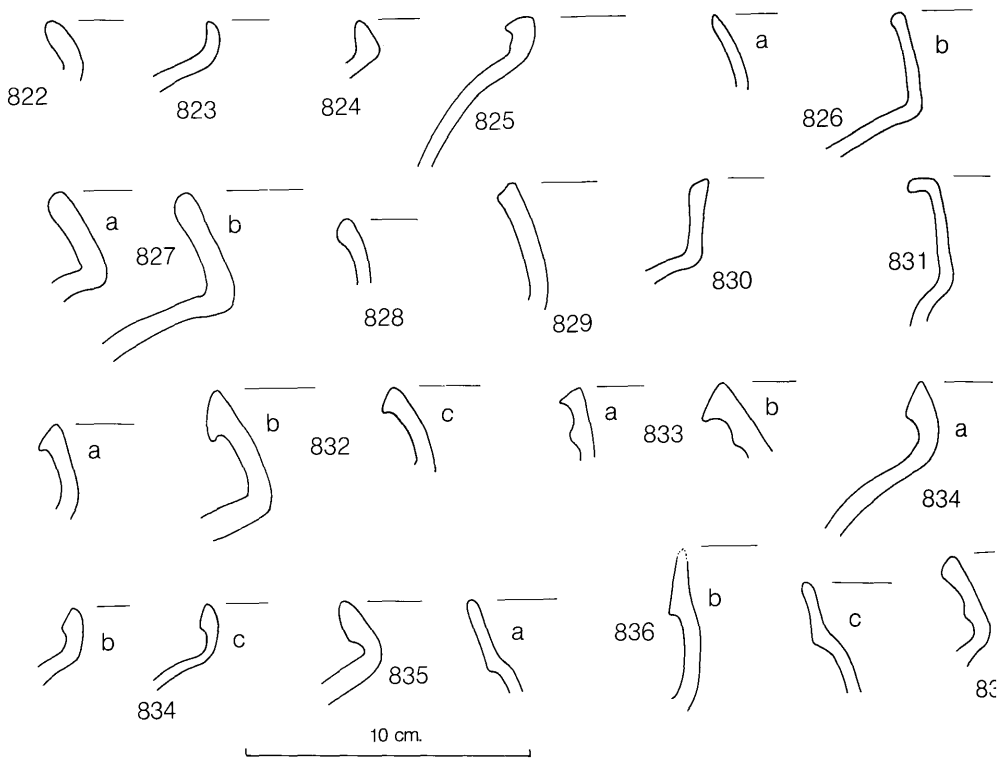
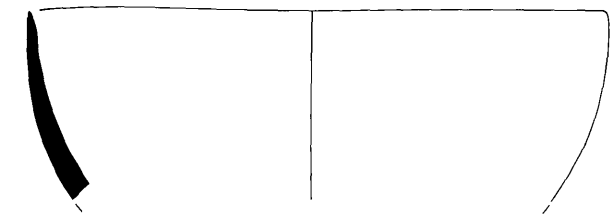
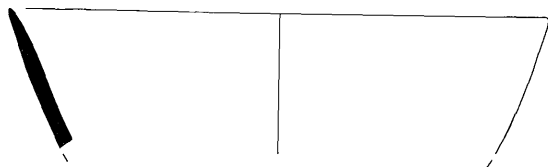


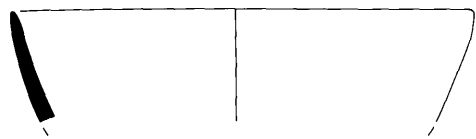
Fig. 10:5 Jar rims: 822-837. Scale 1:2.



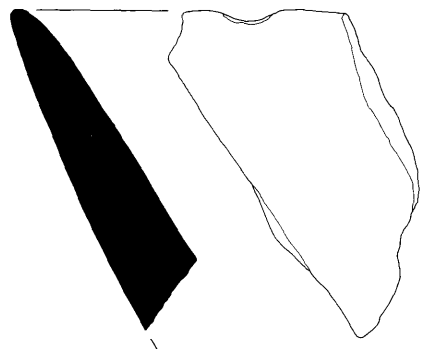
838



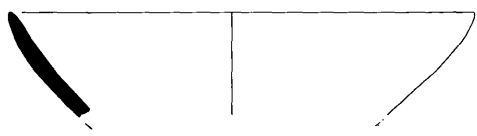
840



839



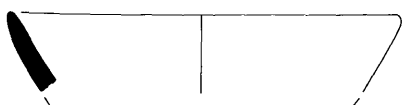
841



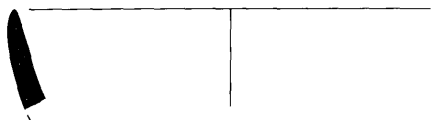
842



843



845



844

Fig. 11:1 Stone vessel sherds: 838-845. Scale 1:2

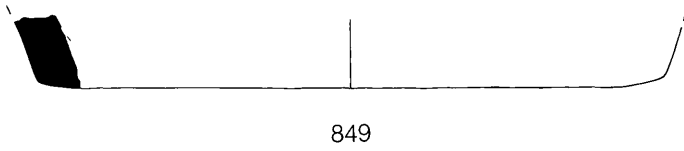
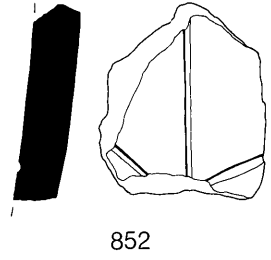
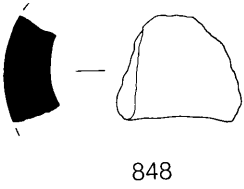
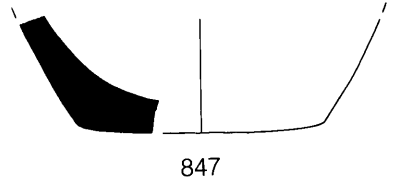
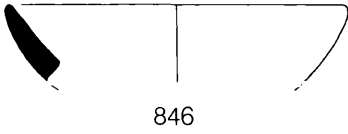


Fig. 11:2 Stone vessel sherds: 846-849, 852. Scale 1:2.

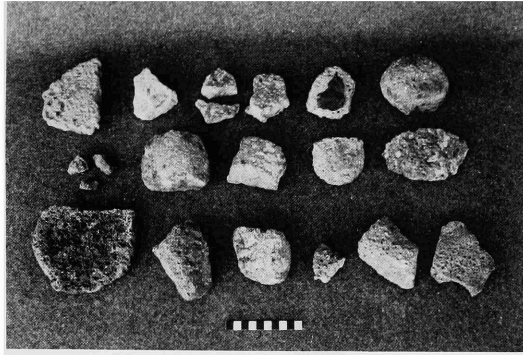
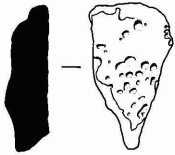
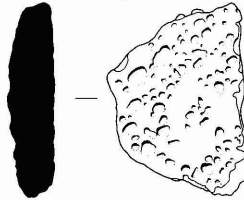


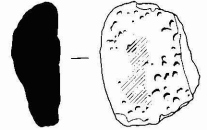
Fig. 12:1 Group photograph of grindstone fragments. (10 cm. scale)  
 top row, l. to r.: 854 - 869 - 870, 871 - 872 - 857 - 858  
 middle row, l. to r.: 883, 884, 885 - 860 - 876 - 861 - 862  
 bottom row, l. to r.: 879 - 863 - 880 - 864 - 865 - 877.



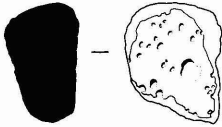
853



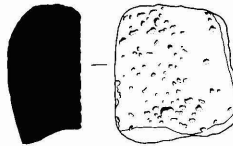
854



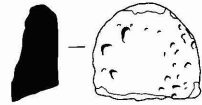
857



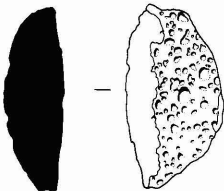
858



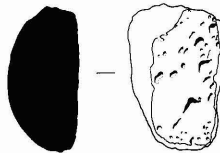
860



861



862



863



864

Fig. 12:2 Grinding stones of Group A (rubbers ?): 853, 854, 857, 858, 860-4 . Scale:1:4.

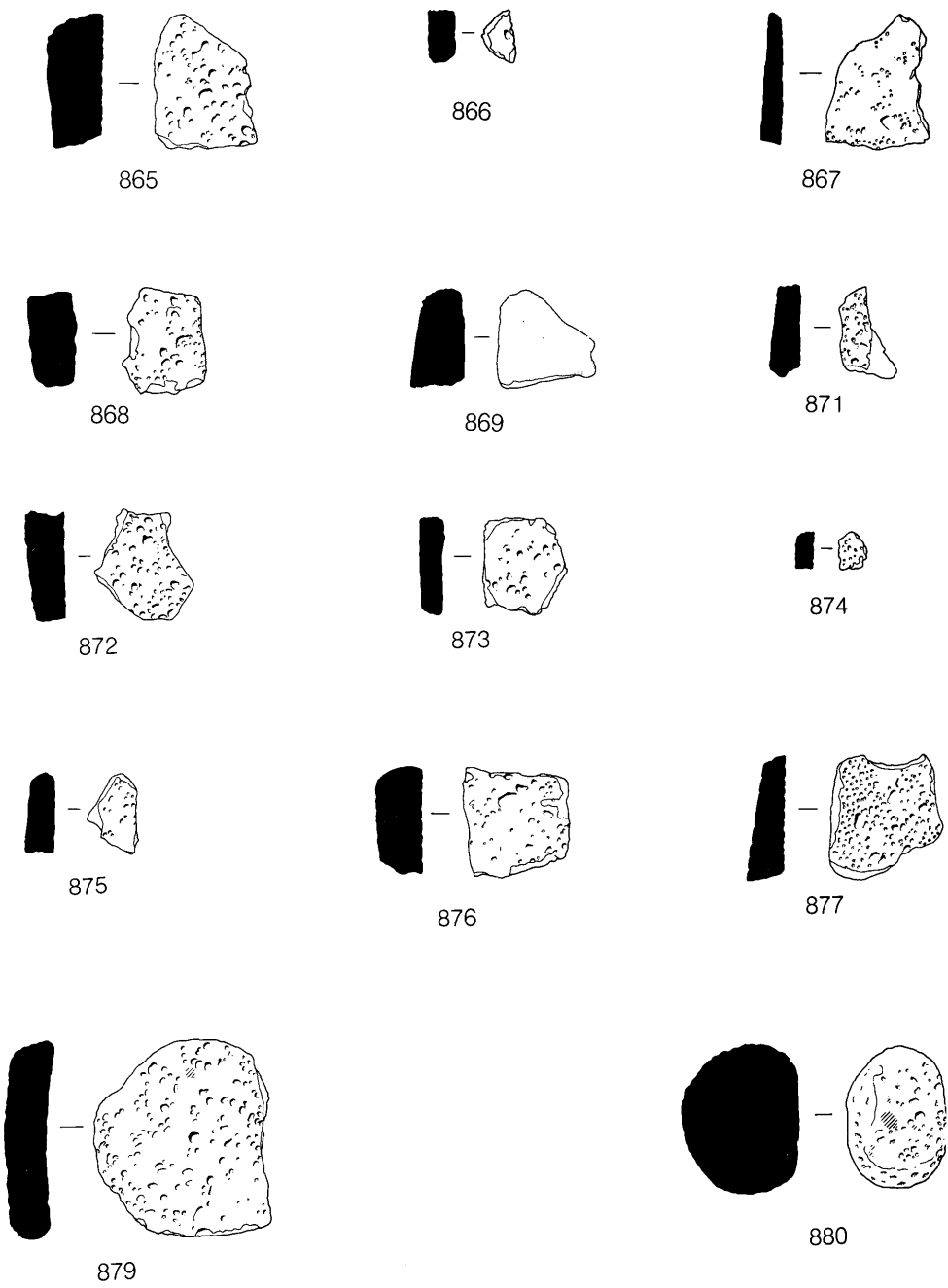
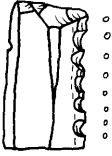
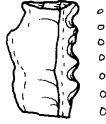


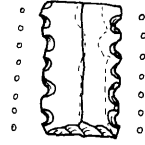
Fig. 12:3 Grinding stones of Group B (flat forms): 865-9, 871-7; miscellaneous: 879, 880. Scale 1:4.



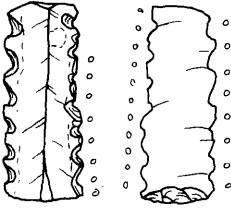
888



889



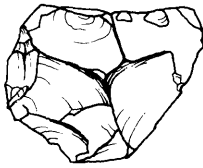
890



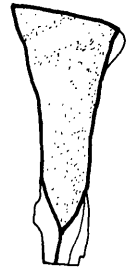
891



892



893



894

Fig. 13:1 Examples of Ash-Tip flints: 888-894. Scale 1:1.





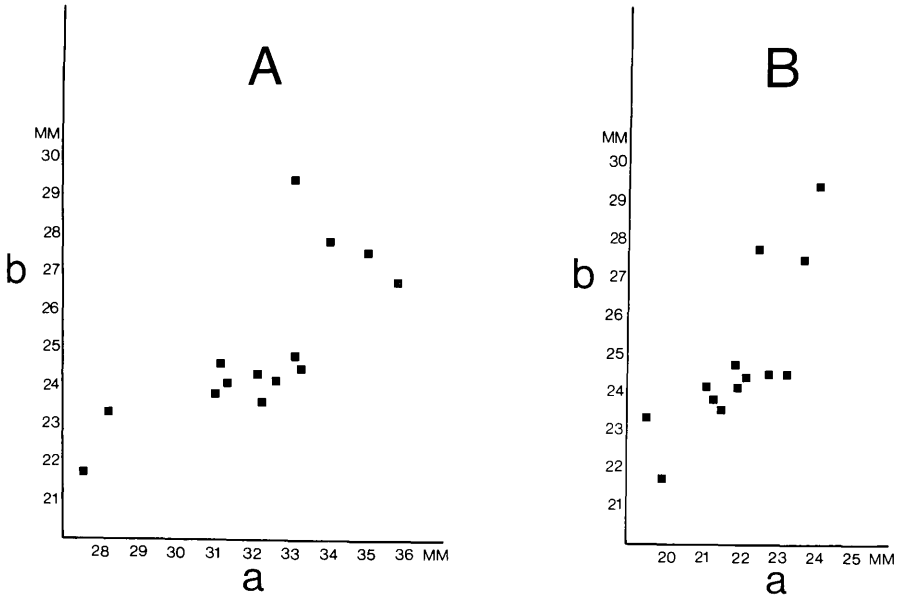


Fig. 14:1 The size of the distal end of the humerus of pig

A: a - breadth of the distal end  
 b - breadth of the trochlea

B: a - height of the trochlea  
 b - breadth of the trochlea

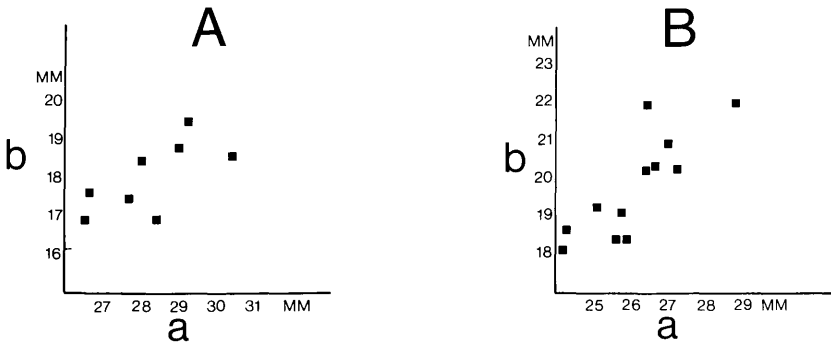


Fig. 14:2

A: The size of the distal humerus of sheep/goat  
 a - breadth of the trochlea  
 b - height of the trochlea

B: The size of the distal tibia of sheep/goat  
 a - breadth of the distal end  
 b - depth of the distal end

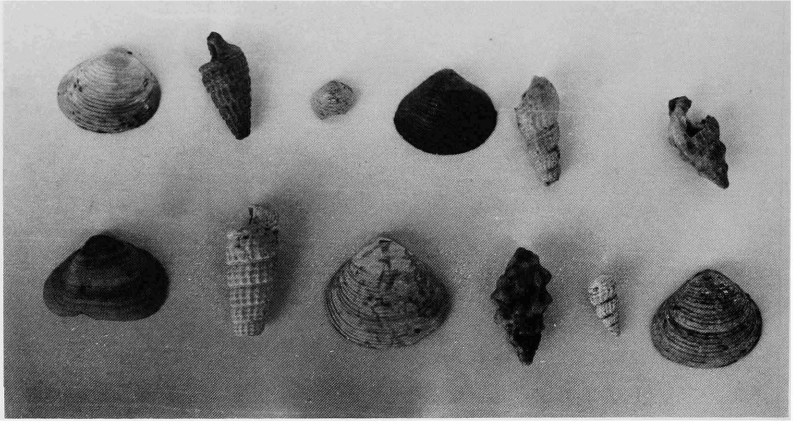


Fig. 14:3a Shells from the Ash-Tip.  
top row (l. to r.): 6G76:230 - 245 - 263 - 283 - 469 - 404  
bottom row: 6G76:421 - 674 - 677 - 6G77:18a - 18b - 6G86:99



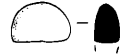
Fig. 14:3b Shells from the Ash-Tip.  
left: 6G76:468; right: 6G76:641



895

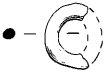


896

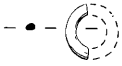


897

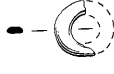
Fig. 16:1 Miscellaneous stone items: 895-897. Scale 1:2.



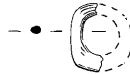
903



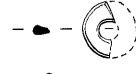
904



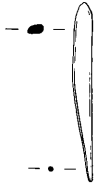
905



906



907



913

Fig. 16:2 Shell rings: 903-7. Scale 1:2. Bone object: 913. Scale 1:1.

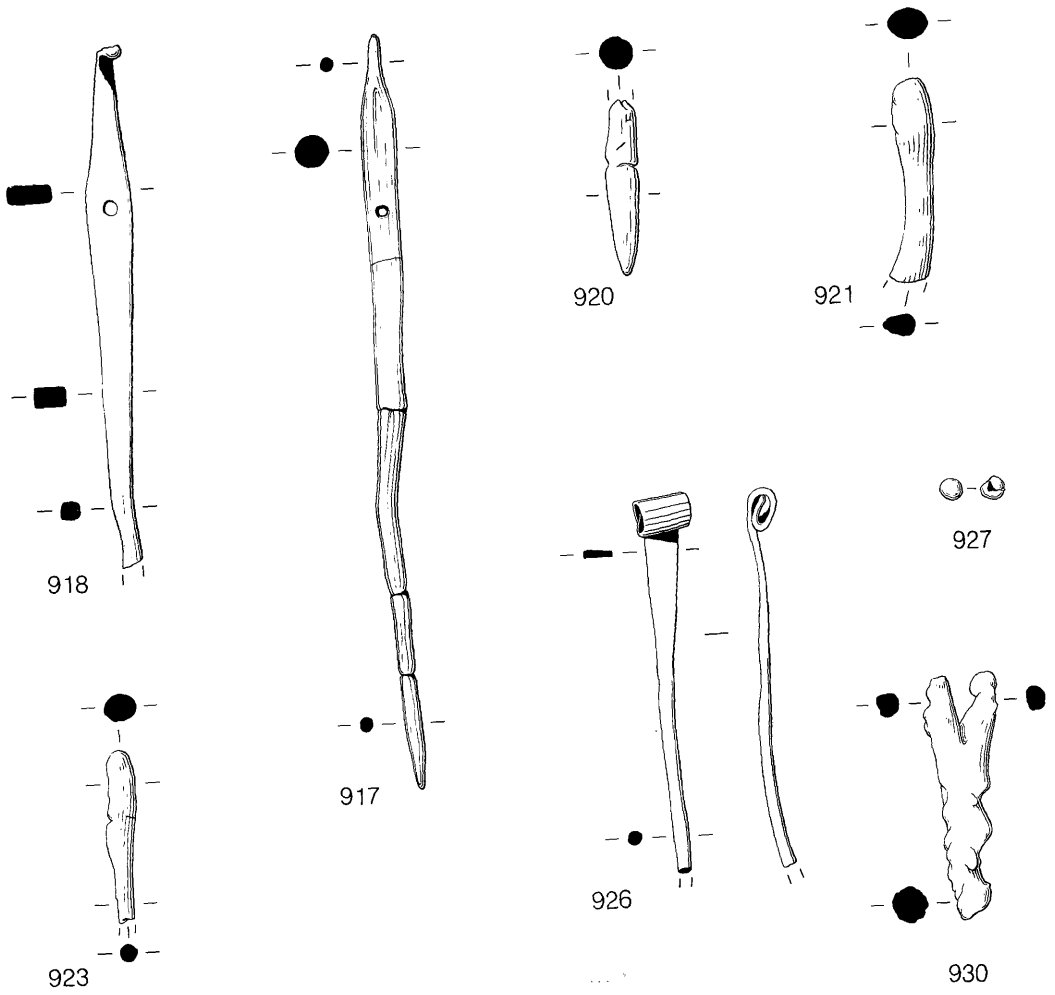


Fig. 16:3 Copper alloy objects: 917-918, 920-921, 923, 926-927, 930. Scale 1:1.



