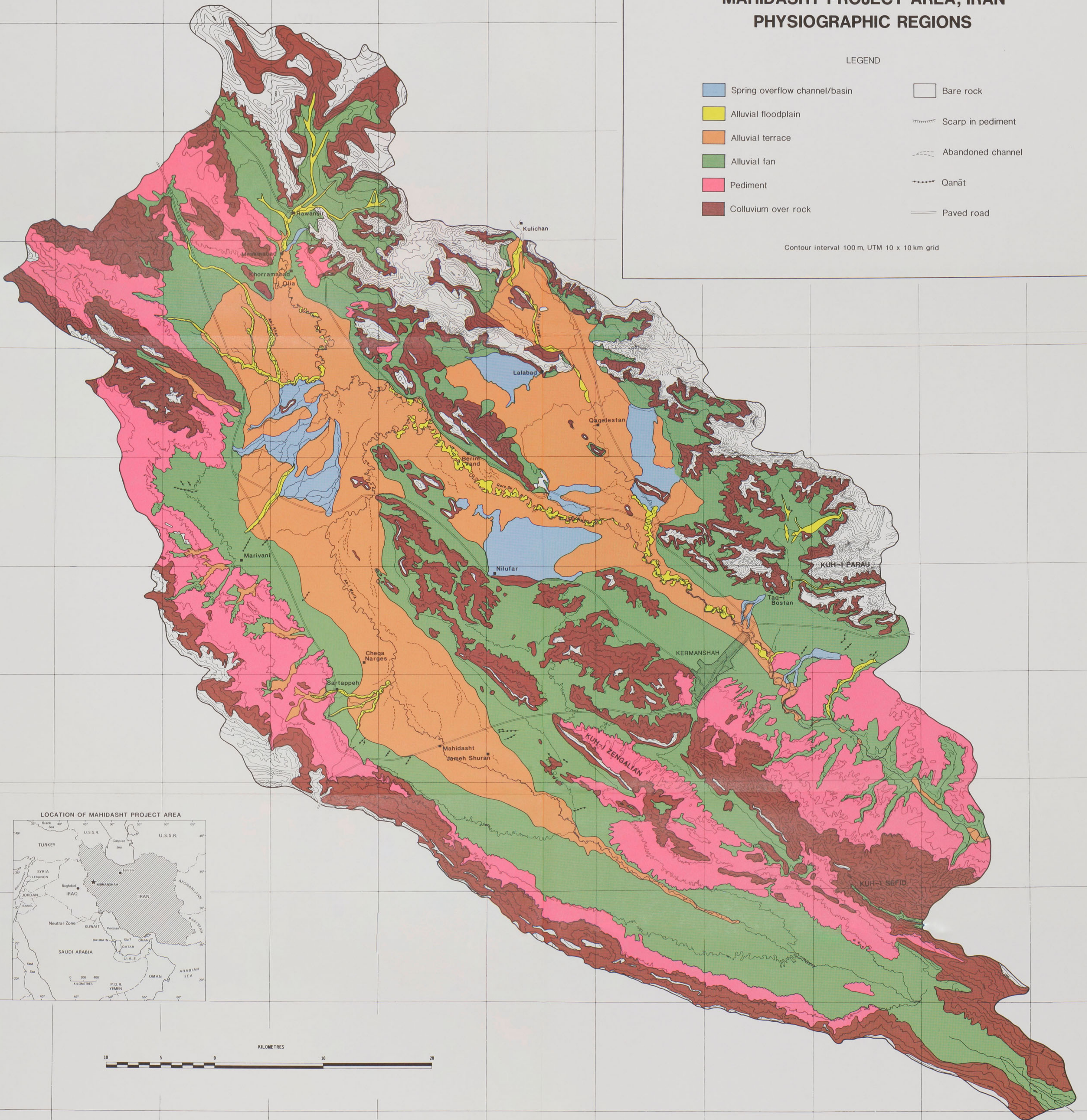


MAHIDASHT PROJECT AREA, IRAN PHYSIOGRAPHIC REGIONS

LEGEND

- Spring overflow channel/basin
- Alluvial floodplain
- Alluvial terrace
- Alluvial fan
- Pediment
- Colluvium over rock
- Bare rock
- Scarp in pediment
- Abandoned channel
- Qanāt
- Paved road

Contour interval 100 m, UTM 10 x 10 km grid



LOCATION OF MAHIDASHT PROJECT AREA



KILOMETRES

