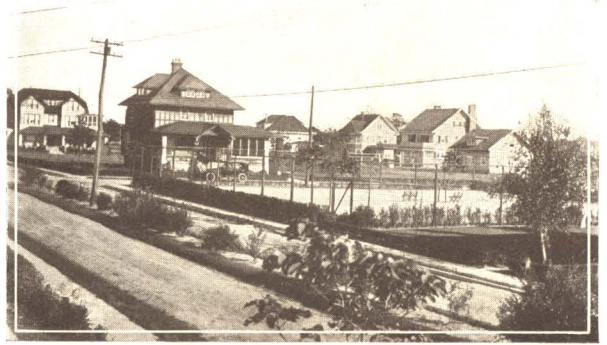


MALVERNE  
LONG ISLAND



MALVERNE HOMES



**Y**OU have planned a home in the country, where your wife and children can enjoy the sunshine and flowers, and the pure exhilarating air—but you have found the places near enough to New York so expensive—and those that you could afford to live in have seemed too far away.

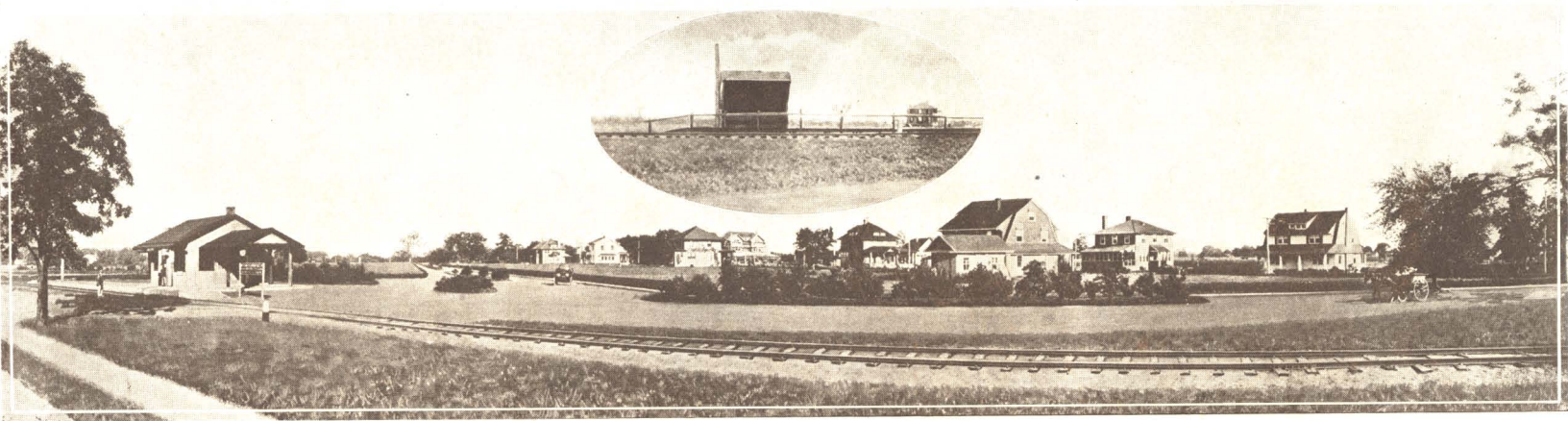
But what of a home 35 minutes from Broadway, in the open country, only 10 minutes from the Atlantic Ocean, right at an electric railroad station, protected by careful restrictions, fully improved, and (let this come as a delightful afterthought) where well-located lots can be bought at from \$200 up, with the payments arranged to suit your convenience!

This is just what is offered you today at Malverne, Long Island.

We say “today” advisedly, because “tomorrow” will see much higher prices if the history of surrounding properties is a fair guide to the investor and home-seeker.



PENNSYLVANIA STATION—THE GATEWAY TO LONG ISLAND

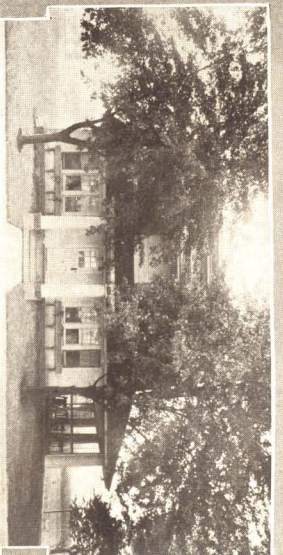


A DEVELOPMENT SO RAPID AND SUBSTANTIAL THAT ITS PHOTOGRAPHED HISTORY CHALLENGES THE IMAGINATION

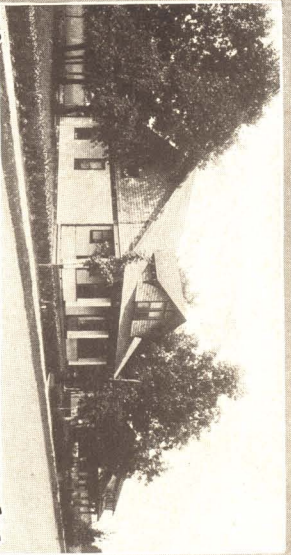
The upper photograph shows Malverne as it was in 1912, an uninhabited tract with a small "flag station." The lower photograph shows it as it is today — retaining all of the natural beauties of the countryside, developed into a thriving community, enjoying every modern advantage — and where the social atmosphere is delightfully congenial. The handsome new station (35 minutes from the heart of New York) is a center of civic improvements, building activity and rising real estate values.

(NOTE — A beautiful Rotogravure Photograph of the above panorama, 24 x 12 inches, suitable for framing will be mailed free on request.)

Residence of Wm. J. Pickett Esq.



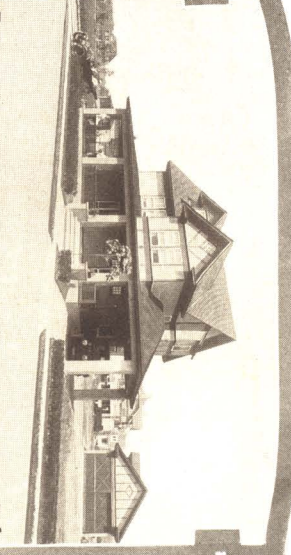
Malverne Bungalow Homes



Residence of A. Roy Camp Esq.



Residence of E.E. Dressner Esq.





MALVERNE SCHOOLS

Malverne offers all that could be desired in a permanent home — splendid modern schools — church — clubs — fire protection — a congenial and delightful social life — healthful climate — your own tennis courts and all-year-round sports, and motoring over the world's finest roads; while near at hand are beach resorts, the finest golf courses in the east, sea bathing, sailing, motor-boating, and fishing — all of these unparalleled advantages are yours to enjoy with lots selling at from \$200 up. Malverne values are unequalled elsewhere.

Malverne, with its attractive homes, beautiful avenues, delightful social life, with its charming natural location, offers as an investment all the allurements of speculation without the risk — for the past history and present activity of all properties at Malverne station bear witness to the safety and profit of real estate investment here. Titles are guaranteed by the Title Guarantee & Trust Co. of New York.

Taxes are much lower than in the city and there are no assessments.

Here is restricted residential property right at the railroad station. Unlike other suburbs there is no large business section or old town to block the homes from the station. Here the New York commuter who uses the station, is *at* the station.

New homes ready for occupancy may be had from \$4,500 to \$15,000 upon convenient terms. These are indeed "the last word in home-planning."



MALVERNE MARKET AND SHOPS

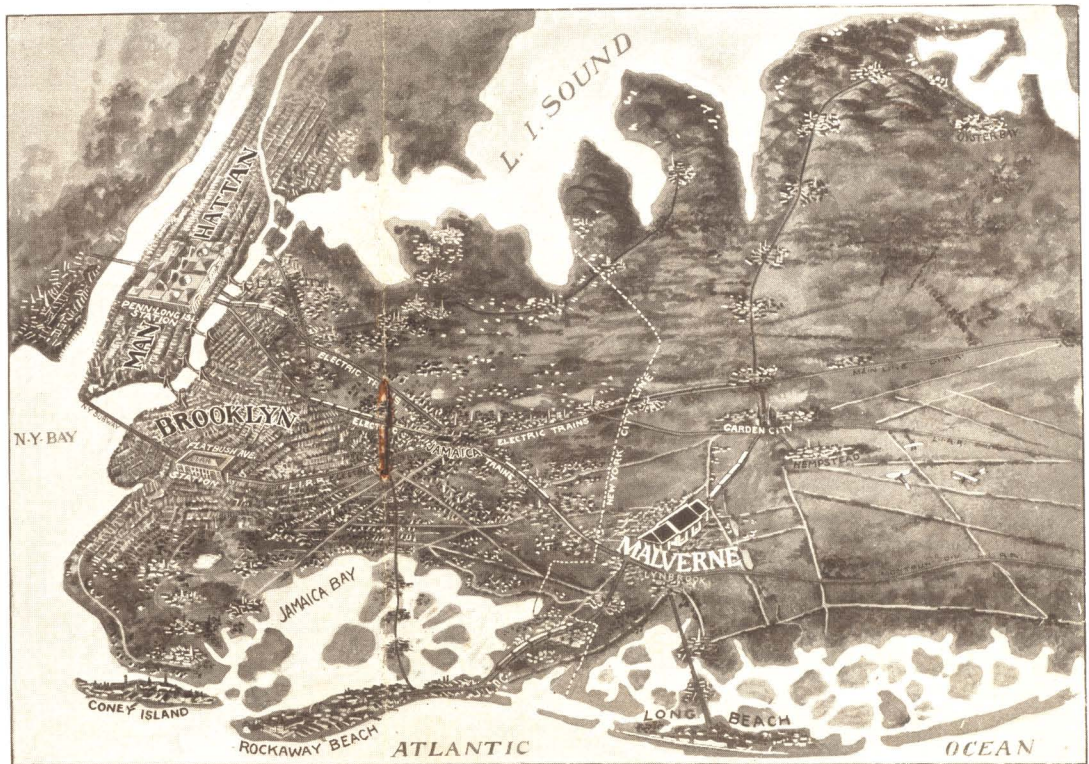


Some of the  
Many Attractive Homes  
at Malverne

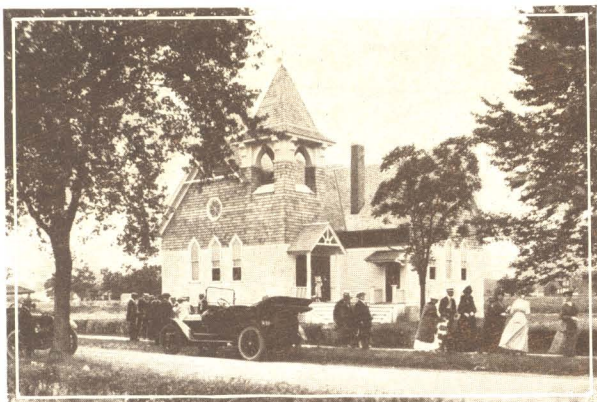


On the north are Garden City and Hempstead; on the south Lynbrook and Long Beach; to the west the eastern boundary of New York City. Although only a few minutes' ride from the broad Atlantic Ocean, Malverne is an ideal winter home as well as a summer resort par excellence.

Long Beach, near Malverne, one of America's most famous watering places, is easily accessible by automobile or electric train, and daily excursions between Malverne and Rockaway during the summer afford the greatest delight for both "grown-ups" and children.



UNPARALLELED LOCATION OF MALVERNE, THE HOME SUBURB



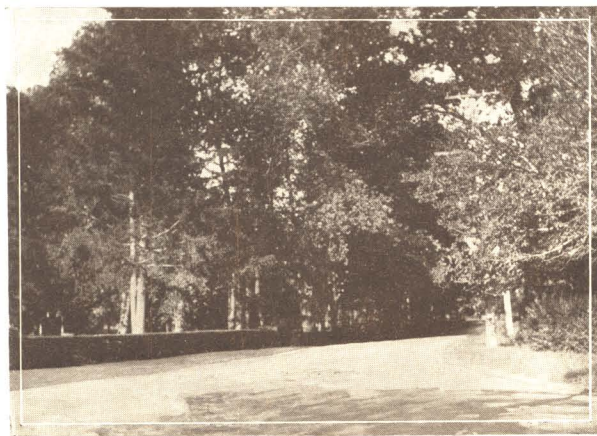
THE FIRST CHURCH OF MALVERNE

Malverne has been developed according to a standard of excellence that is rarely found in properties offered at such low prices.

The wide avenues are well built, with guaranteed granolithic sidewalks bordered by attractive flowers and grass plots, with California privet hedges. Beautiful shade trees border all lots, and attractive parkings add much to the natural charm of this delightful home suburb. Private vegetable gardens afford pleasure and profit unknown in the city.

The ground is all high and healthful. Malverne is indeed "swept by ocean breezes" — always several degrees cooler in summer and warmer in winter than New York City, according to government reports.

*You cannot duplicate Malverne values anywhere around New York City* — and we are only 35 minutes from Broadway.



BIG TREES AT MALVERNE



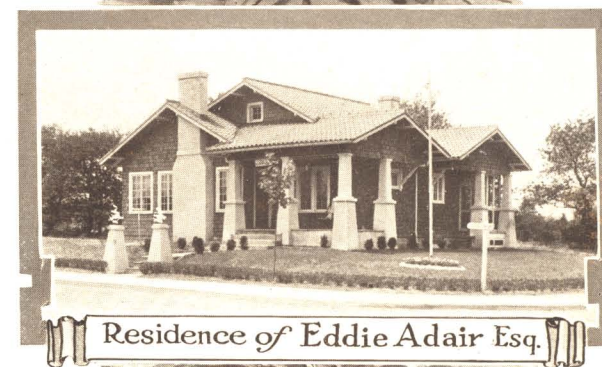
Residence of Carl Bier. Sr.



Residence of Bert Wheeler Esq.



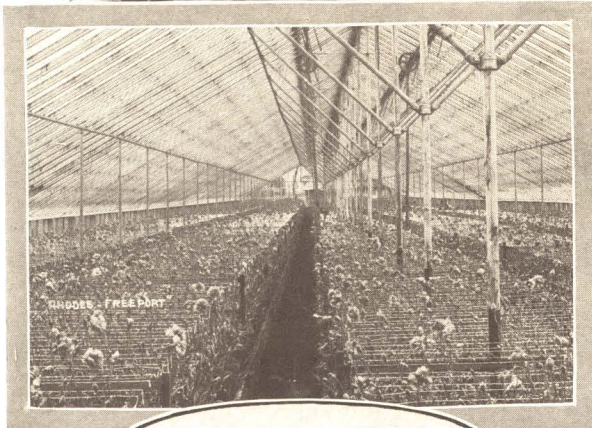
A Typical Malverne Bungalow



Residence of Eddie Adair Esq.



Residence of  
George Hart, Nurseryman

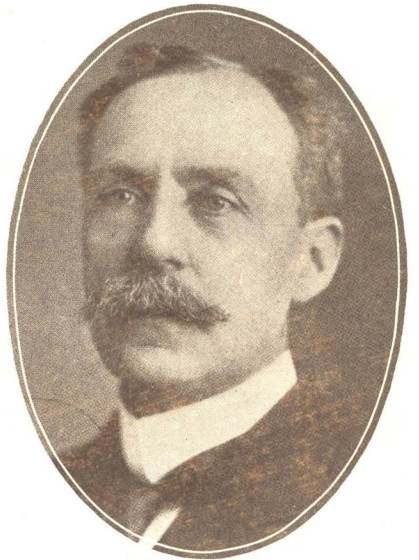


Greenhouse No. 10  
Weber's Nurseries



Home of the  
Malverne Fire Department

Mr. August Eimer, President of this company, is also President of Eimer & Amend, who have been since 1851 the best known importers and manufacturers of drugs, chemicals and scientific apparatus in the United States. He is an honorary trustee of the Lincoln Memorial Association, a member of the Metropolitan Museum of Art, The American Museum of Natural History, American Electro-Chemical Society, American Merchants' Association, The College of Pharmacy of the City of New York, and the American Chemical Society. He is a recognized authority on Long Island real estate, and devotes his best attention to advancing the interests of his company and his numerous clients.



AUGUST EIMER, President

Mr. Alfred H. Wagg, Vice-President and General Manager of this company since its organization, was recently appointed Regional Director of the Own Your Home Division of the United States Department of Labor. He is an Executive Committeeman of the National Association of Real Estate Boards, a former President of the Real Estate Association of the State of New York, and was for several years Vice-President and Secretary-Treasurer of the Long Island Real Estate Exchange. His wide experience in the development of meritorious suburban properties in the Atlantic states insures the best of service and satisfaction to the customers of the Amsterdam Development & Sales Co.

Carl B. Eimer, Treasurer, is a member of the Bar of the State of New York and has been actively identified with successful suburban development in the metropolitan district for several years.

Mr. William M. Hansen, Assistant Secretary and Sales Manager, is a recognized authority on suburban real estate and has been associated with Long Island home properties for many years.



ALFRED H. WAGG,  
Vice-President and General Manager



Fun in the Surf near Malverne



Pine Lake Malverne



A Malverne Vegetable Garden

Call or write for maps, price lists, and full particulars. We will place you under no obligation or importunity whatsoever.

## Amsterdam Development & Sales Co.

(INCORPORATED)

"LONG ISLAND SALES DEPARTMENT"

Main Office

1269 Broadway, New York City

TELEPHONES: 7459 Mad. Sq. — 10175 Mad. Sq.

Malverne property office in Malverne Railroad Station.

AUGUST EIMER,  
President

CARL B. EIMER,  
Treasurer

ALFRED H. WAGG,  
Vice-Pres. & Gen. Manager

WILLIAM M. HANSEN,  
Asst. Sec. & Sales Manager

Members of the Real Estate Association of the State of New York, The Real Estate Board of New York, The Real Estate Exchange of Long Island, and the National Association of Real Estate Boards.

REMOVED  
PENN. TRUST CO.  
370 South Ave.



